

STATE OF ILLINOIS
 DEPARTMENT OF TRANSPORTATION
 DIVISION OF HIGHWAYS

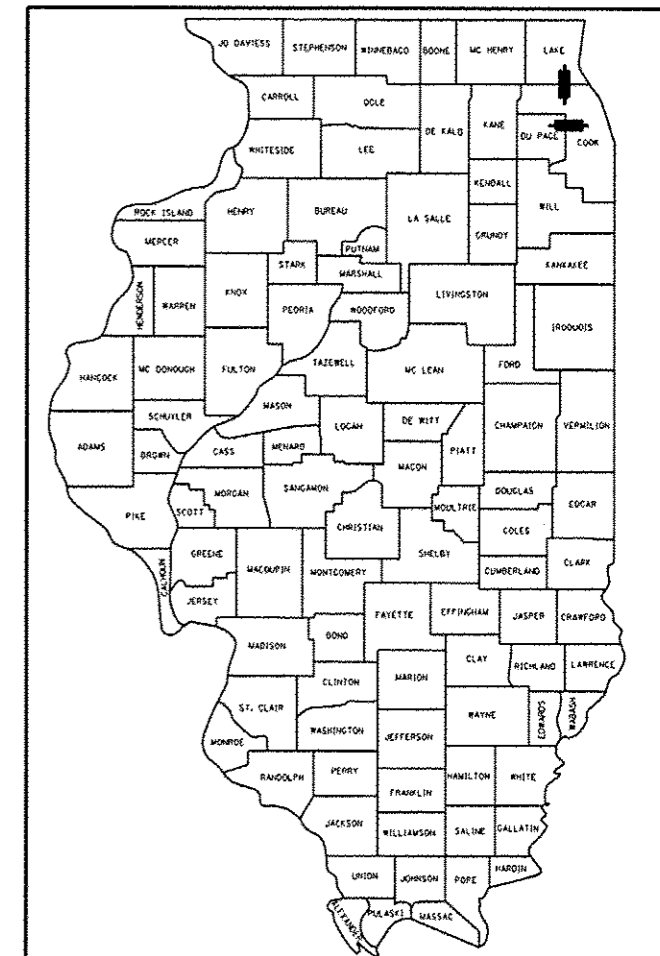
**PROPOSED
 HIGHWAY PLANS**

VARIOUS ROUTES
 SECTION: 2014-029RS
 VARIOUS NORTH EXPRESSWAY LOCATIONS
 INTERMITTENT RESURFACING
 COOK, DUPAGE, AND LAKE COUNTIES
 C-91-305-14

F.A. RTE.	SECTION	COUNTY	TOTAL SHEETS	SHEET NO.
VAR.	2014-029RS	ILLINOIS	VARIOUS*	25
			CONTRACT NO.	60Y15

*COOK, DUPAGE AND LAKE

D-91-305-14

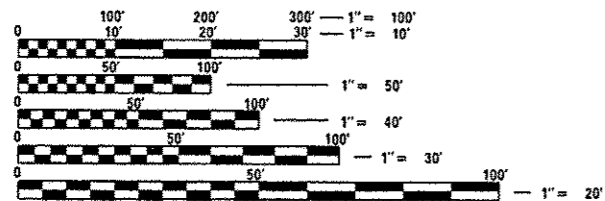


LOCATION OF SECTION INDICATED THIS: - [Black bar]

FOR INDEX OF SHEETS, SEE SHEET NO. 2

- THIS PROJECT IS LOCATED IN:
- THE VILLAGE OF ADDISON
 - THE VILLAGE OF ARLINGTON HEIGHTS
 - THE VILLAGE OF GLENCOE
 - THE VILLAGE OF LINCOLNWOOD
 - THE VILLAGE OF MORTON GROVE
 - THE VILLAGE OF NORTHBROOK
 - THE VILLAGE OF PALATINE
 - THE VILLAGE OF SCHAUMBURG
 - THE VILLAGE OF SKOKIE
 - THE VILLAGE OF WILMETTE
 - THE CITY OF CHICAGO
 - THE CITY OF HIGHLAND PARK
 - THE CITY OF ROLLING MEADOWS

FOR GENERAL LOCATION MAP, SEE SHEETS NO. 4 AND NO. 5



FULL SIZE PLANS HAVE BEEN PREPARED USING STANDARD ENGINEERING SCALES. REDUCED SIZED PLANS WILL NOT CONFORM TO STANDARD SCALES. IN MAKING MEASUREMENTS ON REDUCED PLANS, THE ABOVE SCALES MAY BE USED.

J.U.L.I.E.
 JOINT UTILITY LOCATION INFORMATION FOR EXCAVATION
 1-800-892-0123
 OR 811

PROJECT ENGINEER: DANIEL WILGREEN (847) 705-4240

PROJECT MANAGER: KEN ENG (847) 705-4247

CONTRACT NO. 60Y15

STATE OF ILLINOIS
 DEPARTMENT OF TRANSPORTATION
 DIVISION OF HIGHWAYS

SUBMITTED *April 10* 20 *14*

John F. ...
 DEPUTY DIRECTOR OF HIGHWAYS, REGION ENGINEER

John D. Baranzelli, PE, BC
 ENGINEER OF DESIGN AND ENVIRONMENT

Osman ...
 DIRECTOR OF HIGHWAYS, CHIEF ENGINEER

PRINTED BY THE AUTHORITY
 OF THE STATE OF ILLINOIS