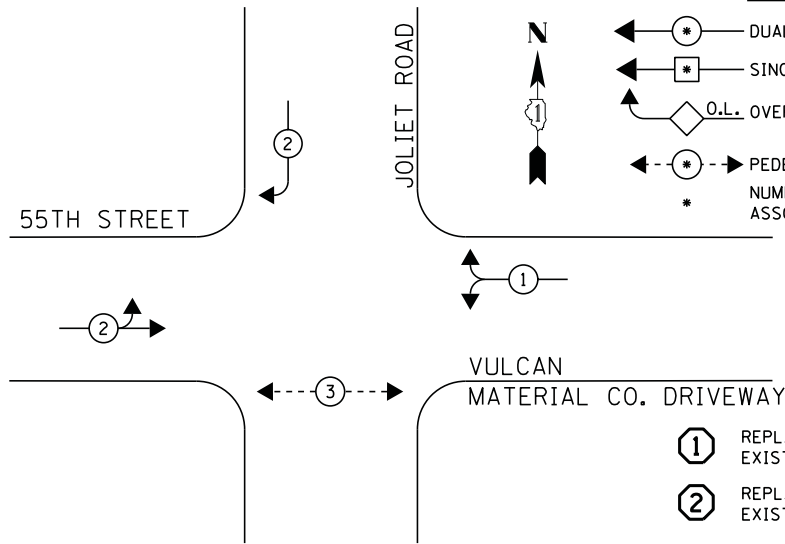
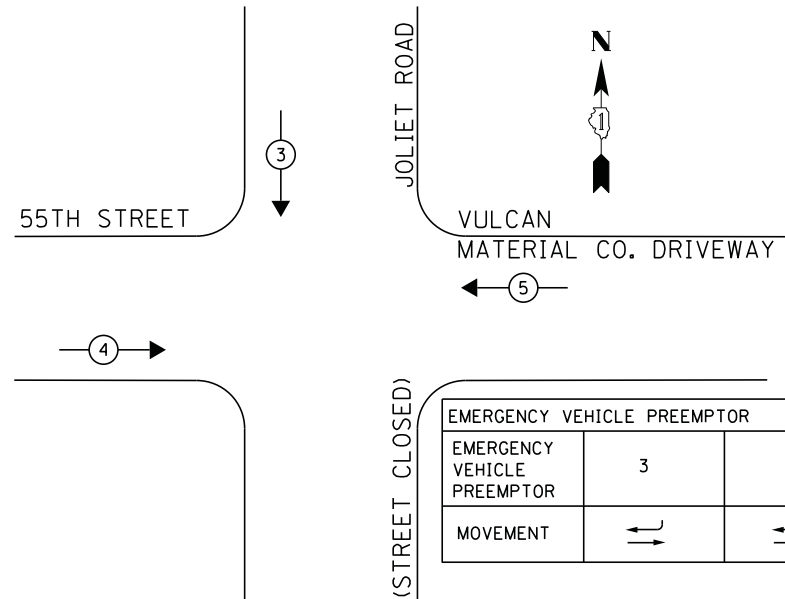


**CONTROLLER SEQUENCE**



**PHASE DESIGNATION DIAGRAM**

**EMERGENCY VEHICLE PREEMPTION SEQUENCE**



EMERGENCY VEHICLE PREEMPTOR			
EMERGENCY VEHICLE PREEMPTOR	3	4	5
MOVEMENT	↔	↔	←

(STREET CLOSED)

**LEGEND**

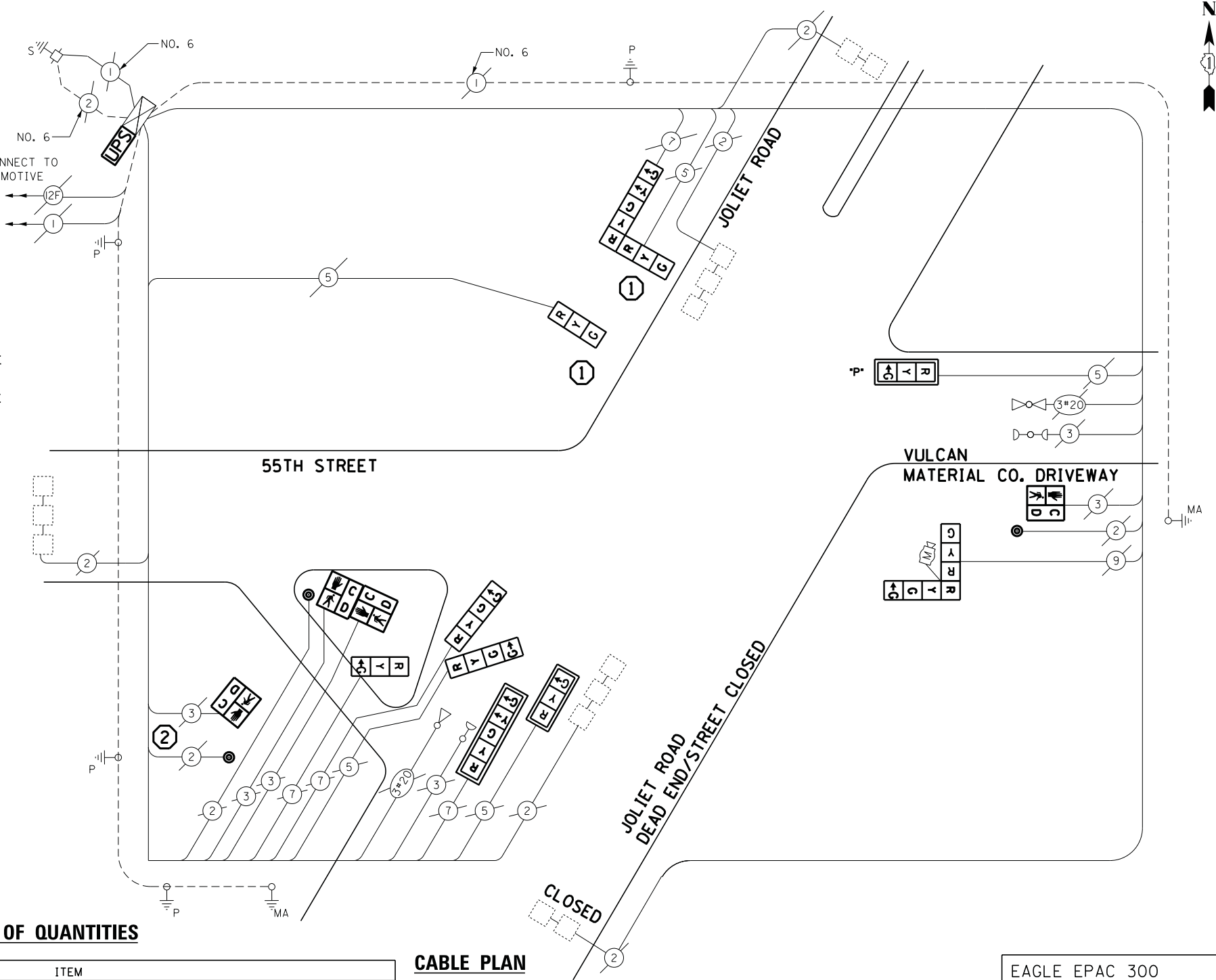
- ⊙ DUAL ENTRY PHASE
- ⊠ SINGLE ENTRY PHASE
- ◊ O.L. OVERLAP
- ⊙ PEDESTRIAN PHASE
- \* NUMBER REFERS TO ASSOCIATED PHASE

- ① REPLACE 16FT. PAINTED POST, RE-USE EXISTING FOUNDATION
- ② REPLACE 14FT. PAINTED POST, RE-USE EXISTING FOUNDATION
- M EXISTING MICROWAVE DETECTOR
- P\* OPTICALLY PROGRAMMED SIGNAL HEAD

**SCHEDULE OF QUANTITIES**

QUANTITY	UNIT	ITEM
1	EACH	MAINTENANCE OF EXISTING TRAFFIC SIGNAL INSTALLATION
1	EACH	TRAFFIC SIGNAL POST, GALVANIZED STEEL 14 FT.
2	EACH	TRAFFIC SIGNAL POST, GALVANIZED STEEL 16 FT.
1	EACH	SIGNAL HEAD, LED, 1-FACE, 3-SECTION, MAST ARM MOUNTED
2	EACH	SIGNAL HEAD, LED, 1-FACE, 3-SECTION, BRACKET MOUNTED
2	EACH	SIGNAL HEAD, LED, 1-FACE, 4-SECTION, BRACKET MOUNTED
1	EACH	SIGNAL HEAD, LED, 1-FACE, 5-SECTION, MAST ARM MOUNTED
1	EACH	SIGNAL HEAD, LED, 2-FACE, 1-3 SECTION, 1-4 SECTION, BRACKET MOUNTED
1	EACH	SIGNAL HEAD, LED, 2-FACE, 1-3 SECTION, 1-5 SECTION, BRACKET MOUNTED
1	EACH	OPTICALLY PROGRAMMED SIGNAL HEAD, LED, 1-FACE, 3-SECTION, MAST ARM MOUNTED
2	EACH	PEDESTRIAN SIGNAL HEAD, LED, 1-FACE, BRACKET MOUNTED WITH COUNTDOWN TIMER
1	EACH	PEDESTRIAN SIGNAL HEAD, LED, 2-FACE, BRACKET MOUNTED WITH COUNTDOWN TIMER
3	EACH	TRAFFIC SIGNAL BACKPLATE, LOUVERED, ALUMINUM
3	EACH	PEDESTRIAN PUSH-BUTTON
1	EACH	MODIFY EXISTING CONTROLLER CABINET
1	EACH	REMOVE EXISTING TRAFFIC SIGNAL EQUIPMENT
2	EACH	REMOVE AND REPLACE ANCHOR BOLTS
1	EACH	UNINTERRUPTIBLE POWER SUPPLY, SPECIAL

**CABLE PLAN**



**REMOVAL OF EXISTING TRAFFIC SIGNAL EQUIPMENT**

THE FOLLOWING ITEMS SHALL BE REMOVED BY THE CONTRACTOR AND SHALL BE DISPOSED OF BY THEM OUTSIDE THE RIGHT-OF-WAY AT THEIR EXPENSE. THE SALVAGE VALUE OF THE REMOVED EQUIPMENT SHALL BE REFLECTED IN THE CONTRACT BID PRICE.

3	EACH	TRAFFIC SIGNAL POST
6	EACH	SIGNAL HEAD, 3-SECTION
6	EACH	SIGNAL HEAD, 5-SECTION
3	EACH	TRAFFIC SIGNAL BACKPLATE
4	EACH	PEDESTRIAN SIGNAL HEAD
3	EACH	PEDESTRIAN PUSH-BUTTON

EAGLE EPAC 300  
CONTROLLER ON-SITE

TRAFFIC SIGNAL EQUIPMENT  
SHALL BE EAGLE TO  
MATCH THE ADJACENT  
EXISTING SYSTEM

TS# 3850  
MC COOK

I.D.O.T. TRAFFIC SIGNAL INSTALLATION ELECTRICAL SERVICE REQUIREMENTS					TOTAL WATTAGE
TYPE	NO LAMPS	WATTAGE		%OPERATION	
		INCAND.	LED		
SIGNAL (RED)	11		17	0.5	93.5
(YELLOW)	11		25	0.25	68.75
(GREEN)	9		15	0.25	33.75
ARROW	10		12	0.10	12
PED. SIGNAL	4		25	1.00	100
CONTROLLER	1		100	1.00	100
ILLUM. SIGN			25	0.05	-
VIDEO SYSTEM			-	1.00	-
FLASHER			-	-	-
ENERGY COSTS TO:				TOTAL =	408

FILE NAME =	USER NAME = .USER.	DESIGNED -	M.A./V.O.	REVISED -	
J:\13155\Work Order 2\DCN\CADD Sheets\060Y18-sht-ts-02_3850.dgn		DRAWN -	Y.J./E.C.	REVISED -	
		PLOT SCALE =	20.0000' / in.	CHECKED -	I.Y.
		PLOT DATE =	5/14/2014	DATE -	5/16/2014

STATE OF ILLINOIS  
DEPARTMENT OF TRANSPORTATION

SCHEDULE OF QUANTITIES, CABLE PLAN, PHASE DESIGNATION DIAGRAM, AND EMERGENCY VEHICLE PREEMPTION SEQUENCE JOLIET ROAD AVENUE AT 55TH STREET/VULCAN MATERIAL CO. DRIVEWAY			
SCALE: NTS	SHEET NO. 1	OF 1	SHEETS
STA. N/A	TO STA. N/A		

F.A.P. RTE.	SECTION	COUNTY	TOTAL SHEETS	SHEET NO.
	2014-03215	COOK	68	18
CONTRACT NO. 60Y18				
ILLINOIS FED. AID PROJECT				