

| | | | | |
|-----------------------|----------|--------------------|--------------|-----------|
| F.A. RTE. | SECTION | COUNTY | TOTAL SHEETS | SHEET NO. |
| 305 | 27R-2 | MCHENRY | 673 | 1 |
| FED. ROAD DIST. NO. 1 | ILLINOIS | CONTRACT NO. 62268 | | |

*673 + 15 = 688

D-91-293-01



LOCATION OF SECTION INDICATED THIS: — ■ —

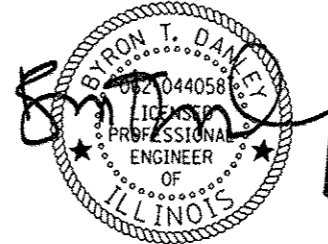
STATE OF ILLINOIS
DEPARTMENT OF TRANSPORTATION
DIVISION OF HIGHWAYS

PROPOSED
HIGHWAY PLANS

FAP 305: US ROUTE 14
SECTION: 27R-2

RECONSTRUCTION & ADD LANE
WEST LAKE SHORE DRIVE TO LUCAS ROAD

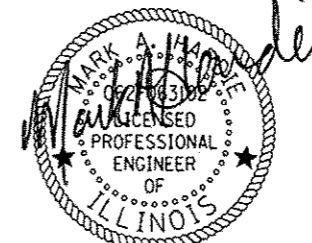
MCHENRY COUNTY
C-91-293-01



BYRON T. DANLEY, P.E.
IL REG NO. 062-044058
EXP U.S. SERVICES INC.
EXPIRES: 11-30-2015

DATE: 6/6/14

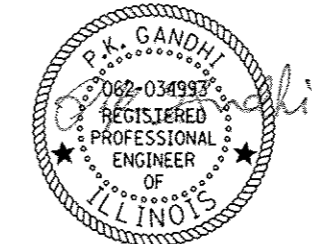
FOR SHEETS : 1 TO 285
: 382 TO 422
: 489 TO 673



MARK A. HARDIE, P.E.
IL REG NO. 062-063102
HR GREEN, INC.
EXPIRES: 11-30-2015

DATE: 6/5/14

FOR SHEETS : 458 TO 471



P.K. GANDHI, P.E.
IL REG NO. 062-034993
GANDHI AND ASSOCIATES INC.
EXPIRES: 11-30-2015

DATE: 6/5/2014

FOR SHEETS : 423 TO 457

STATE OF ILLINOIS
DEPARTMENT OF TRANSPORTATION
DIVISION OF HIGHWAYS

SUBMITTED June 6, 2014

John Frutman, P.E.
DEPUTY DIRECTOR OF HIGHWAYS, REGION ENGINEER

June 27, 2014
John D. Baranzelli, P.E.
ENGINEER OF DESIGN AND ENVIRONMENT

June 27, 2014
Omer Osman, P.E.
DIRECTOR OF HIGHWAYS, CHIEF ENGINEER

SUBSURFACE UTILITY ENGINEERING (S.U.E.)
UTILIZED ON THIS PROJECT

FOR INDEX OF SHEETS, SEE SHEET NO. 2

PROJECT LOCATED IN THE CITIES OF
WOODSTOCK AND CRYSTAL LAKE

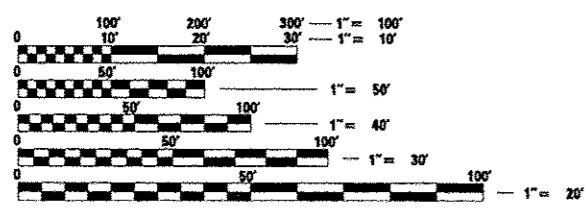
U.S. ROUTE 14
DESIGN DESIGNATION - 3360(22) ARTERIAL 11.47 (PCC-20)
ADT = 18,900 (2005) 32,000 (2030)
DESIGN SPEED = 50 MPH
POSTED SPEED = 45 MPH

LILY POND ROAD
ADT = 1,300 (2005) 2,000 (2030)
DESIGN SPEED = 35 MPH
POSTED SPEED = 30 MPH (UNPOSTED)

RIDGEFIELD ROAD NORTH
ADT = 1,050 (2005) 2,000 (2030)
DESIGN SPEED = 50 MPH
POSTED SPEED = 45 MPH

DOTY ROAD
ADT = 3,000 (2005) 6,000 (2030)
DESIGN SPEED = 45 MPH
POSTED SPEED = 40 MPH

LAKE SHORE DRIVE
ADT = 3,500 (2005) 5,000 (2030)
DESIGN SPEED = 35 MPH
POSTED SPEED = 30 MPH (UNPOSTED)



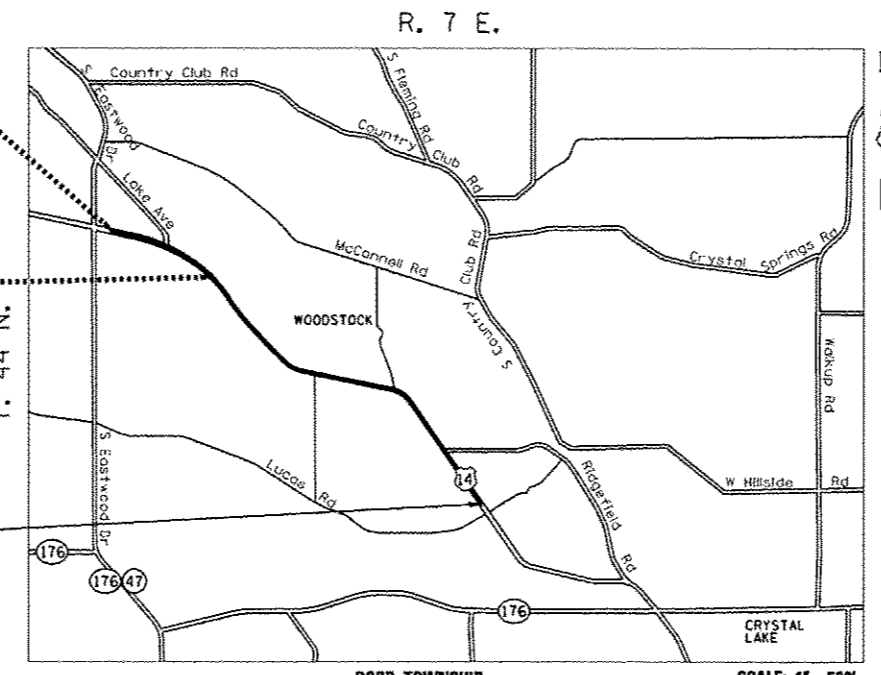
FULL SIZE PLANS HAVE BEEN PREPARED USING STANDARD
ENGINEERING SCALES. REDUCED SIZED PLANS WILL NOT
CONFORM TO STANDARD SCALES. IN MAKING MEASUREMENTS
ON REDUCED PLANS, THE ABOVE SCALES MAY BE USED.

J.U.L.I.E.
JOINT UTILITY LOCATION INFORMATION FOR EXCAVATION
1-800-892-0123
OR 811

PROJECT BEGINS
U.S. ROUTE 14
STA. 129 + 22 (EX)

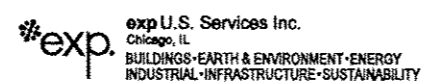
STATION EQUATION
U.S. ROUTE 14
STA. 169 + 61.76 BK =
STA. 325 + 74.26 AH

PROJECT ENDS
U.S. ROUTE 14
STA. 493 + 00.00



GROSS & NET LENGTH OF PROJECT: 20,765.50 FEET = 3.933 MILES

PROJECT ENGINEER: CRAIG BAUER (847) 705-4265
PROJECT MANAGER: LONG TRAN (847) 705-4232
CONTRACT NO. 62268



GANDHI AND ASSOCIATES, INC.
ENGINEERS AND PLANNERS
6035 N. NORTHWEST HIGHWAY
SUITE 306
CHICAGO, ILLINOIS 60631 TEL. (773) 774-5910



PRINTED BY THE AUTHORITY
OF THE STATE OF ILLINOIS