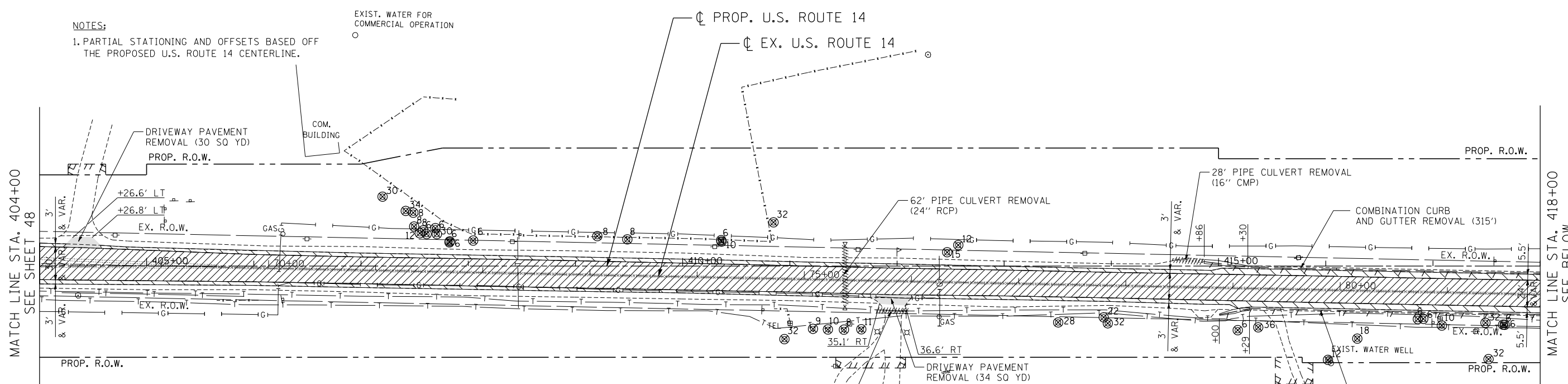


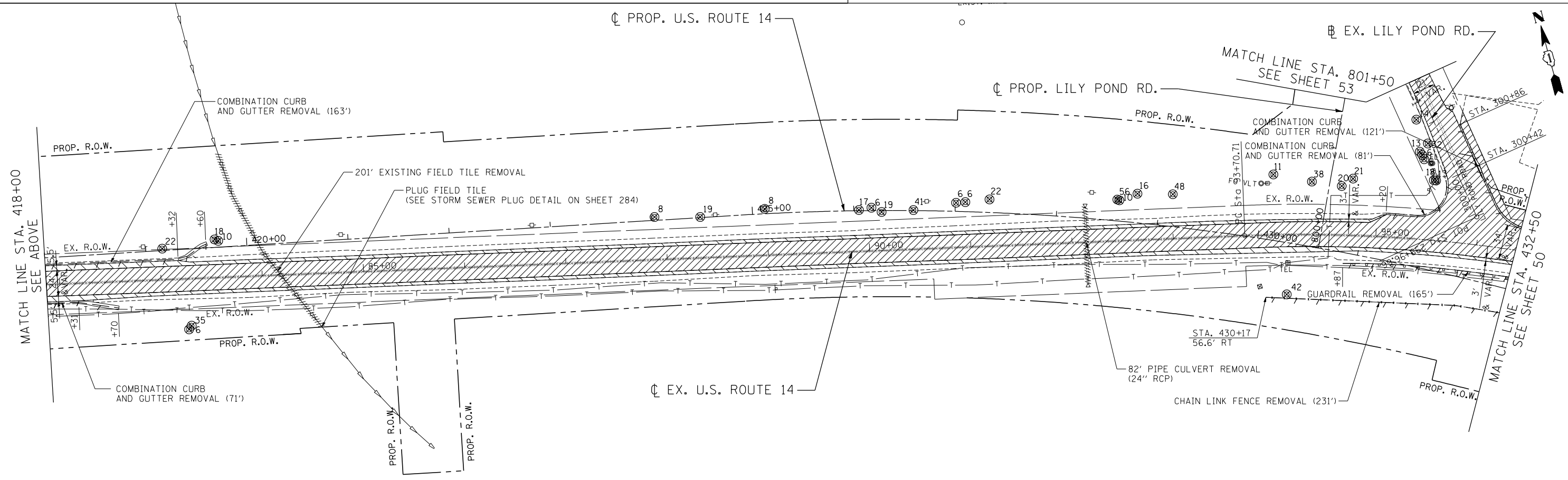
NOTES:
1. PARTIAL STATIONING AND OFFSETS BASED OFF THE PROPOSED U.S. ROUTE 14 CENTERLINE.

EXIST. WATER FOR COMMERCIAL OPERATION



REMOVAL LEGEND

	PAVEMENT REMOVAL		HMA SURFACE REMOVAL (VAR. DEPTH)		LINEAR REMOVALS
	PAVED SHOULDER REMOVAL		HMA SURFACE REMOVAL (2 1/4")		STORM SEWER TO BE REMOVED
	ISLAND PAVEMENT REMOVAL		MEDIAN REMOVAL		PIPE CULVERT REMOVAL (INCLUDING FLARED END SECTION)
	CONCRETE MEDIAN SURFACE REMOVAL		TREE REMOVAL (WITH DIA. INCHES)		DRAINAGE STRUCTURE TO BE REMOVED
	DRIVEWAY PAVEMENT REMOVAL		BUSH / SHRUB REMOVAL (REMOVAL INCLUDED IN COST OF EARTHWORK)		DRAINAGE STRUCTURE TO BE ADJUSTED



FILE NAME = ... USER NAME = HECHTBR ... DESIGNED - ... REVISED - ... DRAWN - RJS ... CHECKED - BRH ... DATE - 11/01/13 ... PLOT SCALE = ... PLOT DATE = ...

STATE OF ILLINOIS
DEPARTMENT OF TRANSPORTATION
 U.S. ROUTE 14

EXISTING ROADWAY & REMOVAL PLANS
STA. 404+00 TO STA. 432+50

SCALE: 1"=50' SHEET NO. OF SHEETS STA. TO STA.

F.A.P. RTE.	SECTION	COUNTY	TOTAL SHEETS	SHEET NO.
305	27R-2	MCHENRY	673	49
CONTRACT NO. 62268				

FED. ROAD DIST. NO. 1 ILLINOIS FED. AID PROJECT