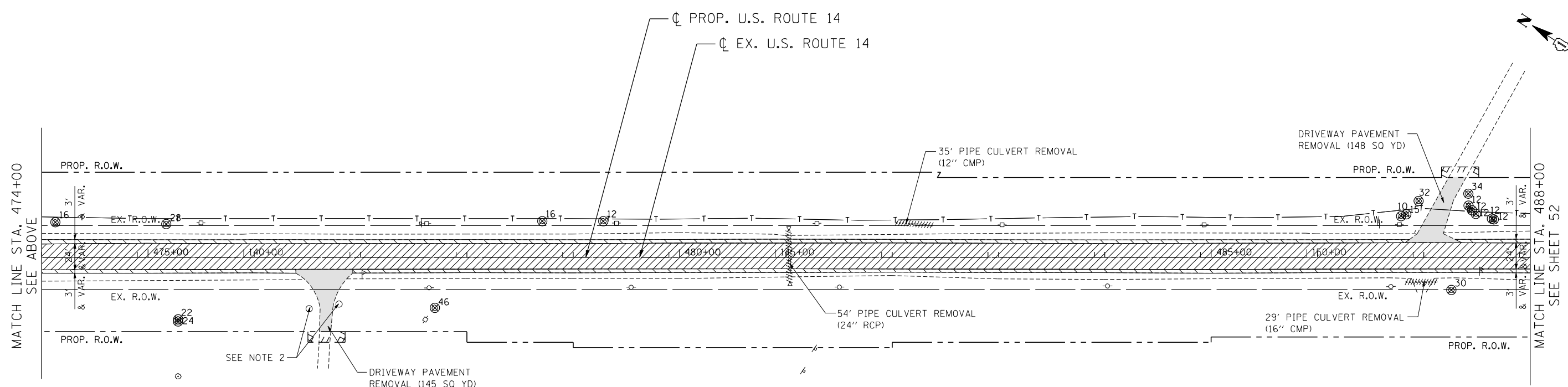
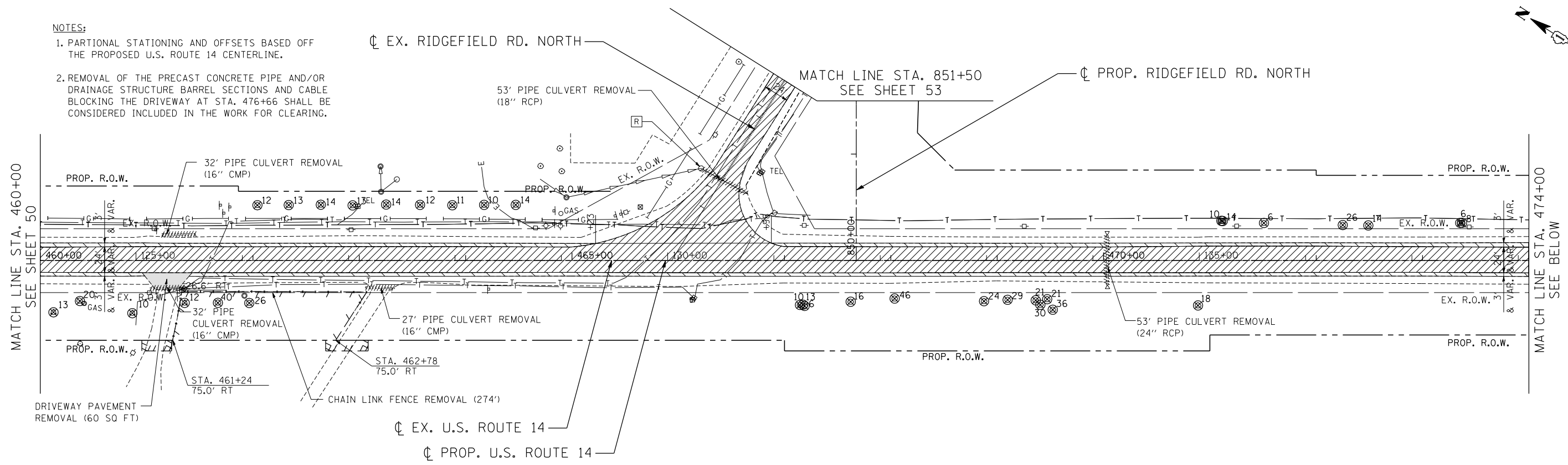


NOTES:

- PARTIAL STATIONING AND OFFSETS BASED OFF THE PROPOSED U.S. ROUTE 14 CENTERLINE.
- REMOVAL OF THE PRECAST CONCRETE PIPE AND/OR DRAINAGE STRUCTURE BARREL SECTIONS AND CABLE BLOCKING THE DRIVEWAY AT STA. 476+66 SHALL BE CONSIDERED INCLUDED IN THE WORK FOR CLEARING.



REMOVAL LEGEND

	PAVEMENT REMOVAL		HMA SURFACE REMOVAL (VAR. DEPTH)		LINEAR REMOVALS
	PAVED SHOULDER REMOVAL		HMA SURFACE REMOVAL (2 1/4")		STORM SEWER TO BE REMOVED
	ISLAND PAVEMENT REMOVAL		MEDIAN REMOVAL		PIPE CULVERT REMOVAL (INCLUDING FLARED END SECTION)
	CONCRETE MEDIAN SURFACE REMOVAL		TREE REMOVAL (WITH DIA. INCHES)		DRAINAGE STRUCTURE TO BE REMOVED
	DRIVEWAY PAVEMENT REMOVAL		BUSH / SHRUB REMOVAL (REMOVAL INCLUDED IN COST OF EARTHWORK)		DRAINAGE STRUCTURE TO BE ADJUSTED

\P\RD\00815.DGN, \GEN\00815.DGN, \RD\00815.DGN, \TTB\00815.DGN, \T\00815.DGN, \CIVIL\00815.DGN, \R\00815.DGN
 11-07-2013, 16:21:55
 HECHTBR
 exp U.S. Services Inc.
 BUILDING-EARTH & ENVIRONMENT-ENERGY
 INDUSTRIAL-INFRASTRUCTURE-SUSTAINABILITY

FILE NAME =	USER NAME = HECHTBR	DESIGNED -	REVISED -
#FILE#		DRAWN - RJS	REVISED -
	PLOT SCALE = #SCALE#	CHECKED - BRH	REVISED -
	PLOT DATE = #DATE#	DATE - 11/01/13	REVISED -

STATE OF ILLINOIS
DEPARTMENT OF TRANSPORTATION
 U.S. ROUTE 14

EXISTING ROADWAY & REMOVAL PLANS			
STA. 460+00 TO STA. 488+00			
SCALE: 1"=50'	SHEET NO.	OF SHEETS	STA. TO STA.

F.A.P. RTE.	SECTION	COUNTY	TOTAL SHEETS	SHEET NO.
305	27R-2	MCHENRY	673	51
CONTRACT NO. 62268				
FED. ROAD DIST. NO. 1 ILLINOIS FED. AID PROJECT				