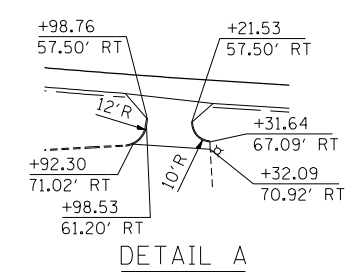
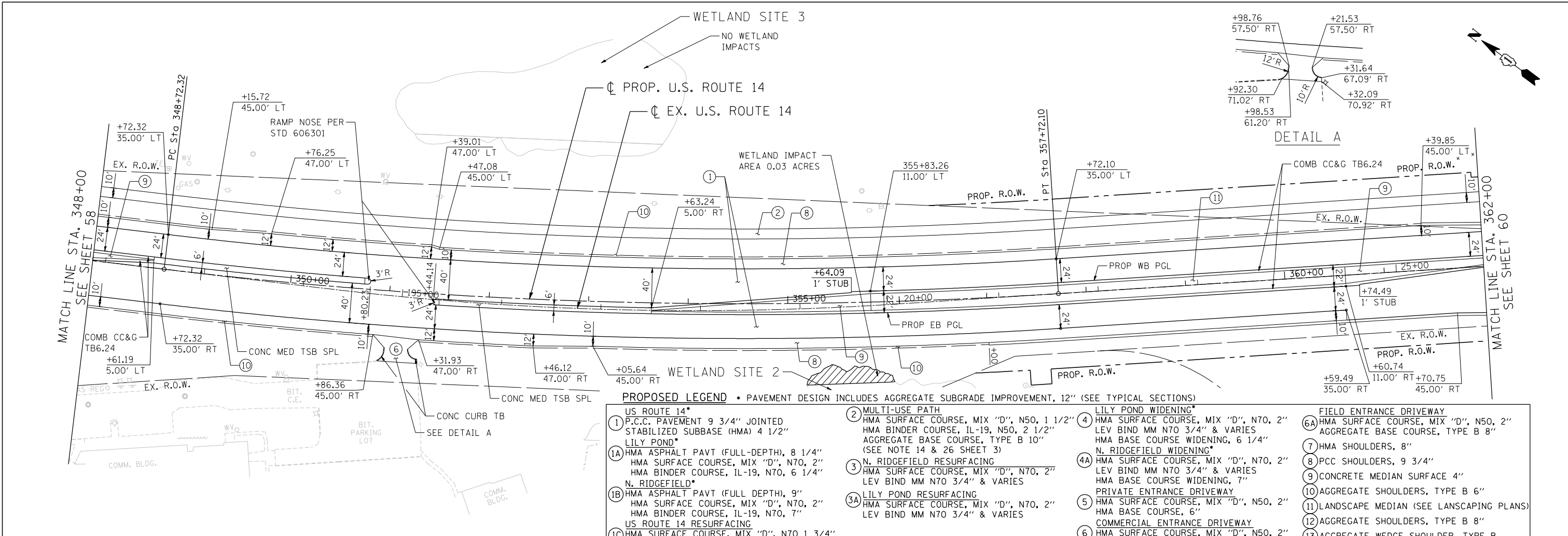


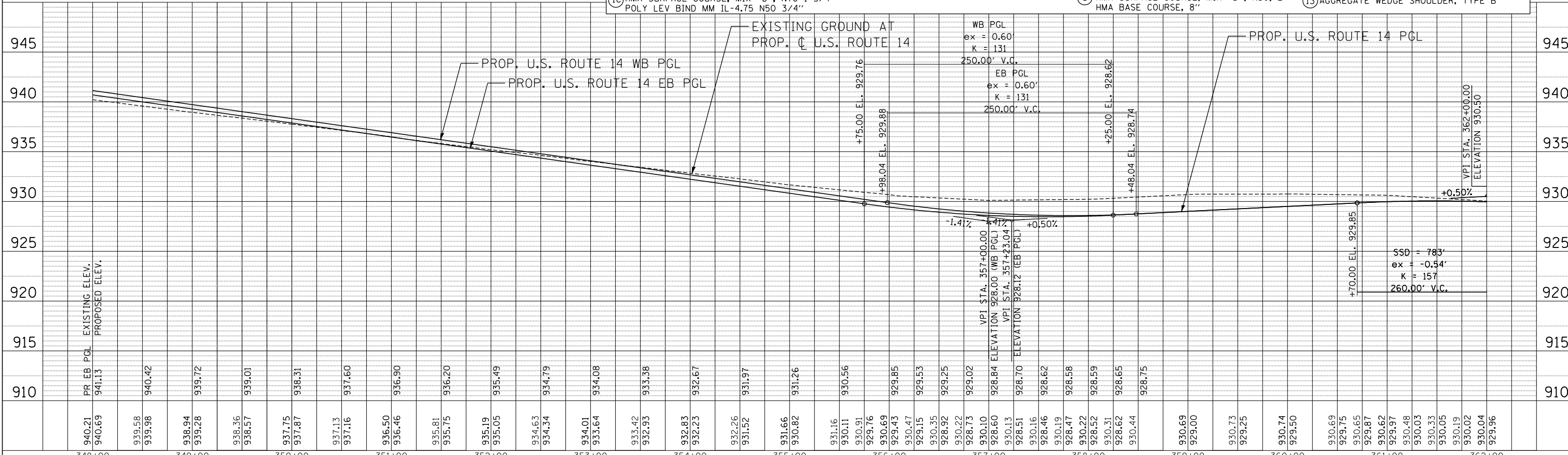
PLAN	SURVEYED	DATE
NOTE BOOK	PLOTTED	BY
NO.	CHECKED	
	AT	
	WORK	
	MAX	
	FILE	
	NAME	

PROFILE	SURVEYED	DATE
NOTE BOOK	PLOTTED	BY
NO.	CHECKED	
	AT	
	WORK	
	MAX	
	FILE	
	NAME	

11-07-2013 16:23:08 HECHTBR
 T:\DOCUMENT\13243790\CIVIL\UDN\PH0811.DGN



- PROPOSED LEGEND** • PAVEMENT DESIGN INCLUDES AGGREGATE SUBGRADE IMPROVEMENT, 12" (SEE TYPICAL SECTIONS)
- US ROUTE 14*
 - 1 P.C.C. PAVEMENT 9 3/4" JOINTED STABILIZED SUBBASE (HMA) 4 1/2" LILY POND*
 - 1A HMA ASPHALT PAVT (FULL-DEPTH), 8 1/4" HMA SURFACE COURSE, MIX "D", N70, 2" HMA BINDER COURSE, IL-19, N70, 6 1/4" N. RIDGEFIELD*
 - 1B HMA ASPHALT PAVT (FULL DEPTH), 9" HMA SURFACE COURSE, MIX "D", N70, 2" HMA BINDER COURSE, IL-19, N70, 7" US ROUTE 14 RESURFACING
 - 1C HMA SURFACE COURSE, MIX "D", N70 1 3/4" POLY LEV BIND MM IL-4.75 N50 3/4"
 - MULTI-USE PATH
 - 2 HMA SURFACE COURSE, MIX "D", N50, 1 1/2" HMA BINDER COURSE, IL-19, N50, 2 1/2" AGGREGATE BASE COURSE, TYPE B 10" (SEE NOTE 14 & 26 SHEET 3)
 - N. RIDGEFIELD RESURFACING
 - 3 HMA SURFACE COURSE, MIX "D", N70, 2" LEV BIND MM N70 3/4" & VARIES
 - LILY POND RESURFACING
 - 3A HMA SURFACE COURSE, MIX "D", N70, 2" LEV BIND MM N70 3/4" & VARIES
 - LILY POND WIDENING*
 - 4 HMA SURFACE COURSE, MIX "D", N70, 2" LEV BIND MM N70 3/4" & VARIES HMA BASE COURSE WIDENING, 6 1/4" N. RIDGEFIELD WIDENING*
 - 4A HMA SURFACE COURSE, MIX "D", N70, 2" LEV BIND MM N70 3/4" & VARIES HMA BASE COURSE WIDENING, 7" PRIVATE ENTRANCE DRIVEWAY
 - 5 HMA SURFACE COURSE, MIX "D", N50, 2" HMA BASE COURSE, 6" COMMERCIAL ENTRANCE DRIVEWAY
 - 6 HMA SURFACE COURSE, MIX "D", N50, 2" HMA BASE COURSE, 8"
 - FIELD ENTRANCE DRIVEWAY
 - 6A HMA SURFACE COURSE, MIX "D", N50, 2" AGGREGATE BASE COURSE, TYPE B 8"
 - 7 HMA SHOULDERS, 8"
 - 8 PCC SHOULDERS, 9 3/4"
 - 9 CONCRETE MEDIAN SURFACE 4"
 - 10 AGGREGATE SHOULDERS, TYPE B 6"
 - 11 LANDSCAPE MEDIAN (SEE LANSCAPING PLANS)
 - 12 AGGREGATE SHOULDERS, TYPE B 8"
 - 13 AGGREGATE WEDGE SHOULDER, TYPE B



FILE NAME =	USER NAME = HECHTBR	DESIGNED -	REVISED -
#FILE#		DRAWN - RJS	REVISED -
exp U.S. Services Inc.		CHECKED - BRH	REVISED -
CHICAGO, IL		DATE - 11/01/13	REVISED -
BUILDINGS-EARTH & ENVIRONMENT-ENERGY			
INDUSTRIAL-INFRASTRUCTURE-SUSTAINABILITY			

STATE OF ILLINOIS
DEPARTMENT OF TRANSPORTATION
 U.S. ROUTE 14

PROPOSED ROADWAY
U.S. ROUTE 14 PLAN & PROFILE
STA. 348+00 TO STA. 362+00

F.A.P. RTE.	SECTION	COUNTY	TOTAL SHEETS	SHEET NO.
305	27R-2	MCHENRY	673	59
FED. ROAD DIST. NO. 1 ILLINOIS FED. AID PROJECT			CONTRACT NO. 62268	

SCALE: HORIZ. 1"=50' VERT. 1"=5' STA. TO STA.