

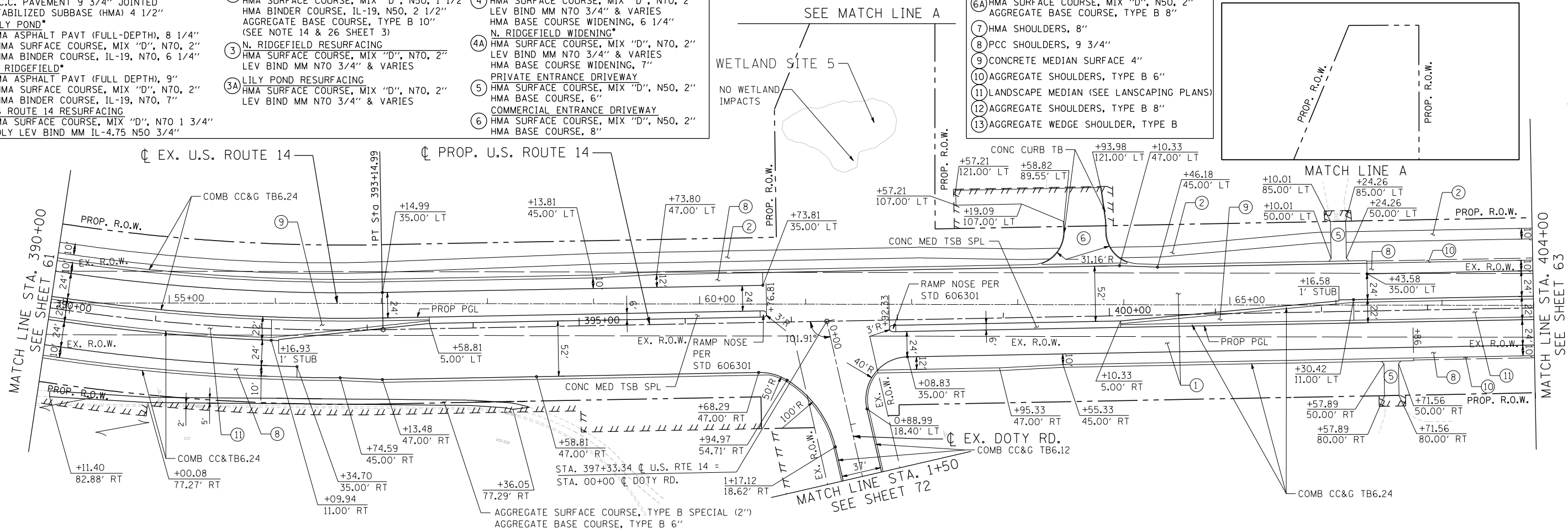
PROPOSED LEGEND • PAVEMENT DESIGN INCLUDES AGGREGATE SUBGRADE IMPROVEMENT, 12" (SEE TYPICAL SECTIONS)

- | | | |
|--|---|--|
| <p>US ROUTE 14*</p> <p>(1) P.C.C. PAVEMENT 9 3/4" JOINTED STABILIZED SUBBASE (HMA) 4 1/2"</p> <p>LILY POND*</p> <p>(1A) HMA ASPHALT PAVT (FULL-DEPTH), 8 1/4" HMA SURFACE COURSE, MIX "D", N70, 2" HMA BINDER COURSE, IL-19, N70, 6 1/4" N. RIDGEFIELD*</p> <p>(1B) HMA ASPHALT PAVT (FULL DEPTH), 9" HMA SURFACE COURSE, MIX "D", N70, 2" HMA BINDER COURSE, IL-19, N70, 7" US ROUTE 14 RESURFACING</p> <p>(1C) HMA SURFACE COURSE, MIX "D", N70 1 3/4" POLY LEV BIND MM IL-4.75 N50 3/4"</p> | <p>(2) MULTI-USE PATH</p> <p>HMA SURFACE COURSE, MIX "D", N50, 1 1/2" HMA BINDER COURSE, IL-19, N50, 2 1/2" AGGREGATE BASE COURSE, TYPE B 10" (SEE NOTE 14 & 26 SHEET 3)</p> <p>(3) N. RIDGEFIELD RESURFACING</p> <p>HMA SURFACE COURSE, MIX "D", N70, 2" LEV BIND MM N70 3/4" & VARIES</p> <p>(3A) LILY POND RESURFACING</p> <p>HMA SURFACE COURSE, MIX "D", N70, 2" LEV BIND MM N70 3/4" & VARIES</p> | <p>(4) LILY POND WIDENING*</p> <p>HMA SURFACE COURSE, MIX "D", N70, 2" LEV BIND MM N70 3/4" & VARIES</p> <p>HMA BASE COURSE WIDENING, 6 1/4" N. RIDGEFIELD WIDENING*</p> <p>(4A) HMA SURFACE COURSE, MIX "D", N70, 2" LEV BIND MM N70 3/4" & VARIES</p> <p>HMA BASE COURSE WIDENING, 7" PRIVATE ENTRANCE DRIVEWAY</p> <p>(5) HMA SURFACE COURSE, MIX "D", N50, 2" HMA BASE COURSE, 6" COMMERCIAL ENTRANCE DRIVEWAY</p> <p>(6) HMA SURFACE COURSE, MIX "D", N50, 2" HMA BASE COURSE, 8"</p> |
|--|---|--|

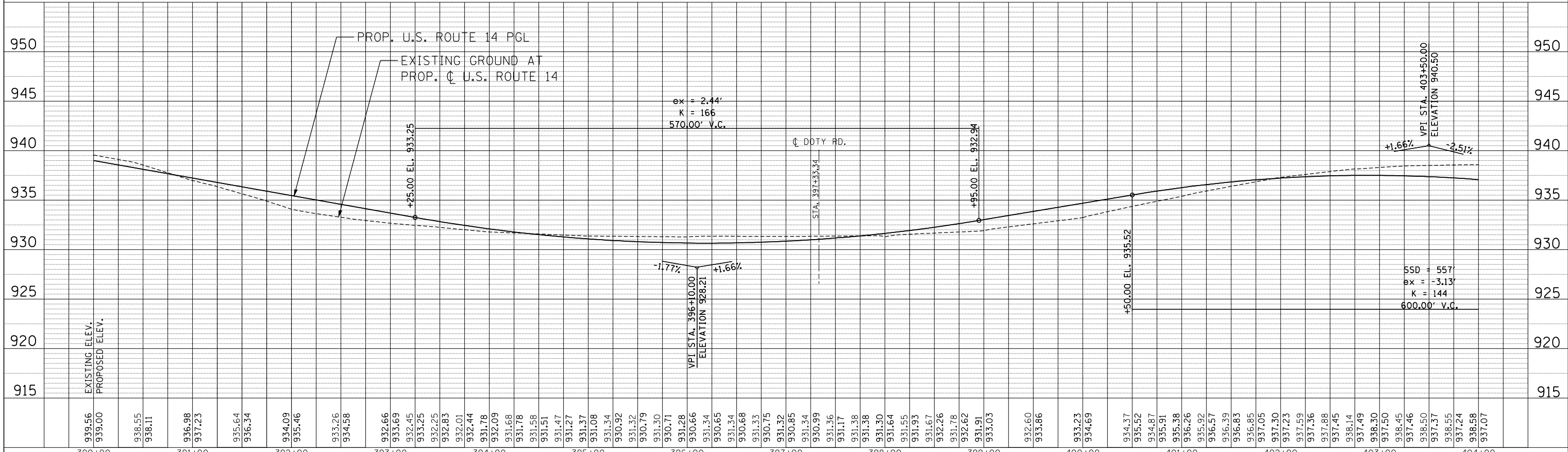
PROPOSED ROADWAY LEGEND (CONT)

- FIELD ENTRANCE DRIVEWAY
- (6A) HMA SURFACE COURSE, MIX "D", N50, 2" AGGREGATE BASE COURSE, TYPE B 8"
- (7) HMA SHOULDERS, 8"
- (8) PCC SHOULDERS, 9 3/4"
- (9) CONCRETE MEDIAN SURFACE 4"
- (10) AGGREGATE SHOULDERS, TYPE B 6"
- (11) LANDSCAPE MEDIAN (SEE LANSAPING PLANS)
- (12) AGGREGATE SHOULDERS, TYPE B 8"
- (13) AGGREGATE WEDGE SHOULDER, TYPE B

PLAN	SURVEYED	DATE
NOTE BOOK	PLOTTED	BY
NO.	GRADES CHECKED	
	STRUCTURE	
	NOTATIONS CHKD	



PROFILE	SURVEYED	DATE
NOTE BOOK	PLOTTED	BY
NO.	GRADES CHECKED	
	STRUCTURE	
	NOTATIONS CHKD	



FILE NAME =	USER NAME = HECHTBR	DESIGNED -	REVISED -
#FILEL#		DRAWN - RJS	REVISED -
		CHECKED - BRH	REVISED -
		DATE - 11/01/13	REVISED -

STATE OF ILLINOIS
DEPARTMENT OF TRANSPORTATION
 U.S. ROUTE 14

PROPOSED ROADWAY
U.S. ROUTE 14 PLAN & PROFILE
STA. 390+00 TO STA. 404+00

F.A.P. RTE.	SECTION	COUNTY	TOTAL SHEETS	SHEET NO.
305	27R-2	MCHENRY	673	62
CONTRACT NO. 62268				

SCALE: HORIZ. 1"=50' VERT. 1"=5' STA. TO STA. FED. ROAD DIST. NO. 1 ILLINOIS FED. AID PROJECT

11-07-2013 16:23:28 HECHTBR
 T:\DOCUMENT\13134390\CIVIL\UDN\PROP08\14.DGN