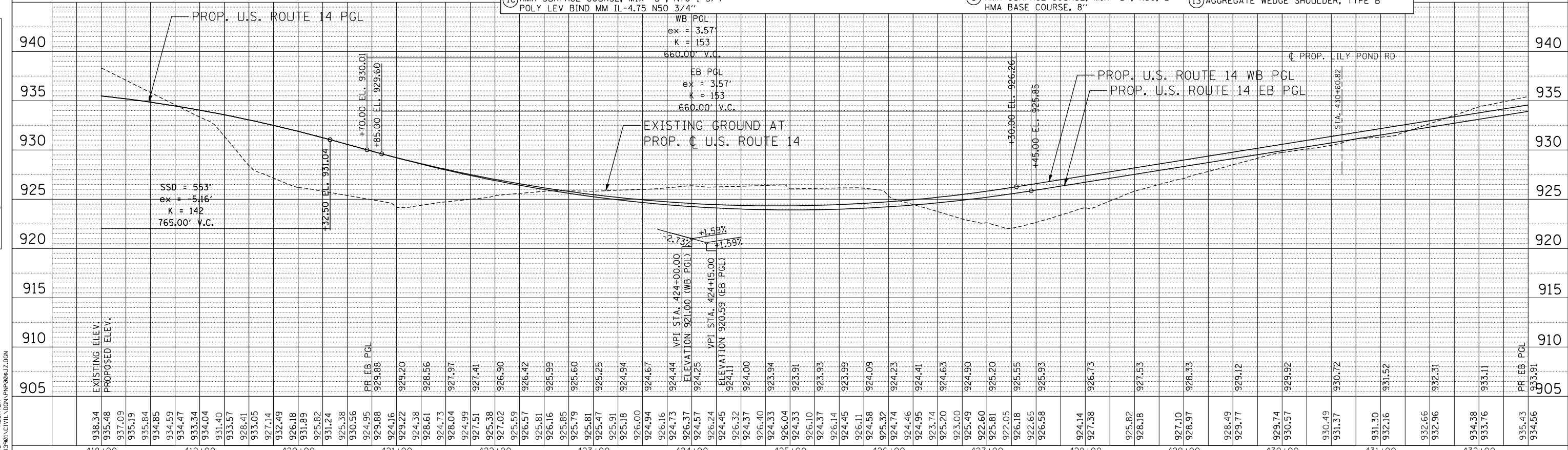
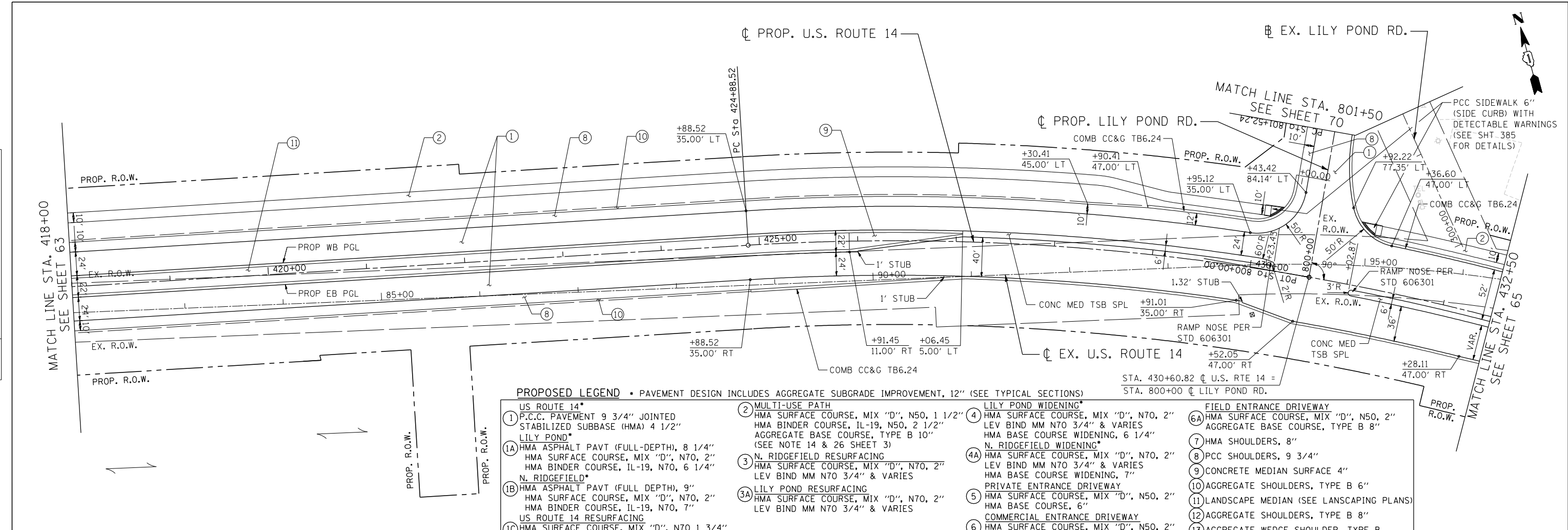


PLAN	SURVEYED	BY	DATE
	PLOTTED		
	CHECKED		
	AT		
	ALIGNED		
	MAX		
	CADD		
	FILE		
	NAME		
	NO.		

PROFILE	SURVEYED	BY	DATE
	PLOTTED		
	GRADES		
	CHECKED		
	STRUCTURE		
	NOTATIONS		
	CHFD		
	NO.		



FILE NAME =	USER NAME = HECHTBR	DESIGNED -	REVISED -	STATE OF ILLINOIS DEPARTMENT OF TRANSPORTATION U.S. ROUTE 14	PROPOSED ROADWAY U.S. ROUTE 14 PLAN & PROFILE STA. 418+00 TO STA. 432+50	F.A.P. RTE. =	SECTION	COUNTY	TOTAL SHEETS	SHEET NO.	
#FILEL#		DRAWN - RJS	REVISED -			305	27R-2	MCHENRY	673	64	
PLOT SCALE = *SCALE*		CHECKED - BRH	REVISED -			CONTRACT NO. 62268					
PLOT DATE = *DATE*		DATE - 11/01/13	REVISED -			FED. ROAD DIST. NO. 1 ILLINOIS FED. AID PROJECT					

11-07-2013 16:29:43 HECHTBR
 T:\DOCUMENT\13134390\CIVIL\UDON\PROJ\0817.DGN

