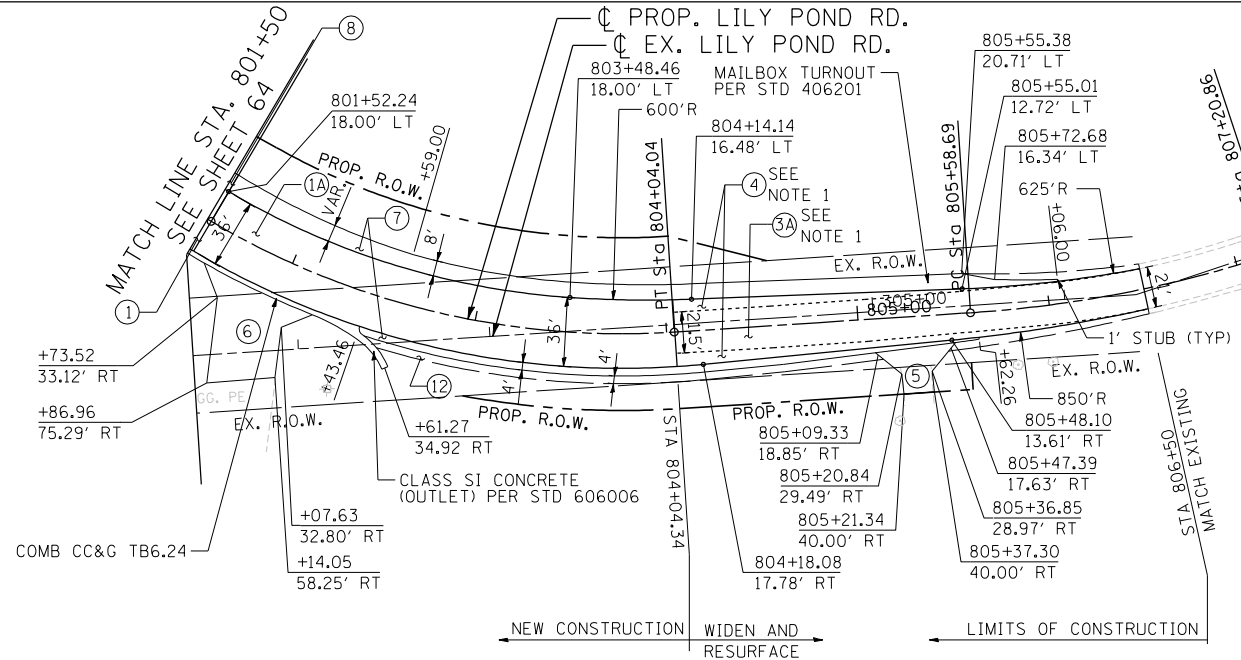


PROPOSED LEGEND • PAVEMENT DESIGN INCLUDES AGGREGATE SUBGRADE IMPROVEMENT, 12" (SEE TYPICAL SECTIONS)

- |   |  |  |  |
|---|--|--|--|
| ① US ROUTE 14*<br>P.C.C. PAVEMENT 9 3/4" JOINTED<br>STABILIZED SUBBASE (HMA) 4 1/2"   | ② MULTI-USE PATH<br>HMA SURFACE COURSE, MIX "D", N50, 1 1/2"<br>HMA BINDER COURSE, IL-19, N50, 2 1/2"<br>AGGREGATE BASE COURSE, TYPE B 10"<br>(SEE NOTE 14 & 26 SHEET 3) | ④ LILY POND WIDENING*<br>HMA SURFACE COURSE, MIX "D", N70, 2"<br>LEV BIND MM N70 3/4" & VARIES<br>HMA BASE COURSE WIDENING, 6 1/4"<br>N. RIDGEFIELD WIDENING*  | ⑥A FIELD ENTRANCE DRIVEWAY<br>HMA SURFACE COURSE, MIX "D", N50, 2"<br>AGGREGATE BASE COURSE, TYPE B 8" |
| ①A LILY POND*<br>HMA ASPHALT PAVT (FULL-DEPTH), 8 1/4"<br>HMA SURFACE COURSE, MIX "D", N70, 2"<br>HMA BINDER COURSE, IL-19, N70, 6 1/4"<br>N. RIDGEFIELD* | ③ N. RIDGEFIELD RESURFACING<br>HMA SURFACE COURSE, MIX "D", N70, 2"<br>LEV BIND MM N70 3/4" & VARIES   | ④A HMA SURFACE COURSE, MIX "D", N70, 2"<br>LEV BIND MM N70 3/4" & VARIES<br>HMA BASE COURSE WIDENING, 7"<br>PRIVATE ENTRANCE DRIVEWAY<br>HMA SURFACE COURSE, MIX "D", N50, 2"<br>HMA BASE COURSE, 6" | ⑦ HMA SHOULDERS, 8"  |
| ①B HMA ASPHALT PAVT (FULL DEPTH), 9"<br>HMA SURFACE COURSE, MIX "D", N70, 2"<br>HMA BINDER COURSE, IL-19, N70, 7"   | ③A LILY POND RESURFACING<br>HMA SURFACE COURSE, MIX "D", N70, 2"<br>LEV BIND MM N70 3/4" & VARIES  | ⑤ COMMERCIAL ENTRANCE DRIVEWAY<br>HMA SURFACE COURSE, MIX "D", N50, 2"<br>HMA BASE COURSE, 8"  | ⑧ PCC SHOULDERS, 9 3/4"  |
| ①C US ROUTE 14 RESURFACING<br>HMA SURFACE COURSE, MIX "D", N70 1 3/4"<br>POLY LEV BIND MM IL-4.75 N50 3/4"  |  |  | ⑨ CONCRETE MEDIAN SURFACE 4"   |
|   |  |  | ⑩ AGGREGATE SHOULDERS, TYPE B 6"   |
|   |  |  | ⑪ LANDSCAPE MEDIAN (SEE LANSAPING PLANS)   |
|   |  |  | ⑫ AGGREGATE SHOULDERS, TYPE B 8"   |
|   |  |  | ⑬ AGGREGATE WEDGE SHOULDER, TYPE B   |

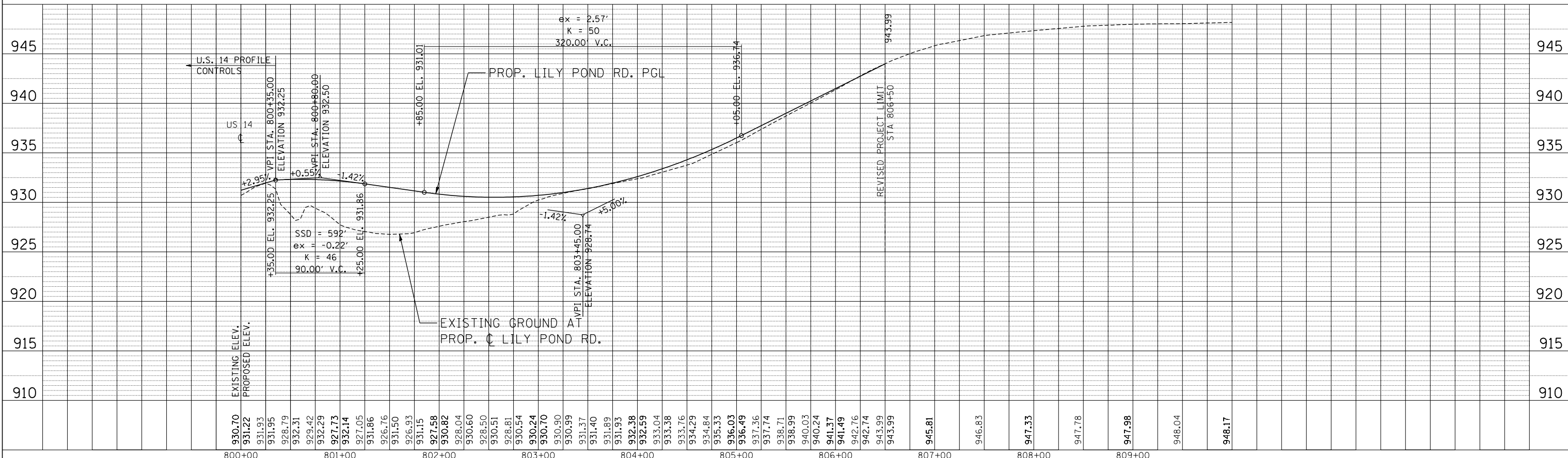
PLAN	SURVEYED	DATE
NOTE BOOK	BY	
NO.		
	CHECKED	
	DATE	
	FILE NAME	

PROFILE	SURVEYED	DATE
NOTE BOOK	BY	
NO.		
	CHECKED	
	DATE	
	FILE NAME	



NOTE

1. LEVELING BINDER (MACHINE METHOD) THICKNESS SHALL VARY BASED ON PROPOSED PROFILE. THICKNESS SHALL BE A MINIMUM 3/4".



11-07-2013 16:24:23 HECHTER  
T:\DOCUMENT\134390\CIVIL\UDN\134390\084K2.DGN

FILE NAME =	USER NAME =	DESIGNED -	REVISED -
#FILEL#	HECHTR	DRAWN -	REVISED -
		CHECKED -	REVISED -
		DATE -	REVISED -

PLOT SCALE =	SCALE#	CHECKED -	REVISED -
PLOT DATE =	DATE#	DATE -	REVISED -

DATE -	11/01/13	REVISED -	
--------	----------	-----------	--

STATE OF ILLINOIS  
DEPARTMENT OF TRANSPORTATION  
U.S. ROUTE 14

PROPOSED ROADWAY		F.A.P. RTE.	SECTION	COUNTY	TOTAL SHEETS	SHEET NO.
LILY POND ROAD PLAN & PROFILE		305	27R-2	MCHENRY	673	70
STA. 801+50 TO STA. 806+50		CONTRACT NO. 62268				
SCALE: HORIZ. 1"=50'	VERT. 1"=5'	STA.	TO STA.			

FED. ROAD DIST. NO. 1	ILLINOIS	FED. AID PROJECT
-----------------------	----------	------------------