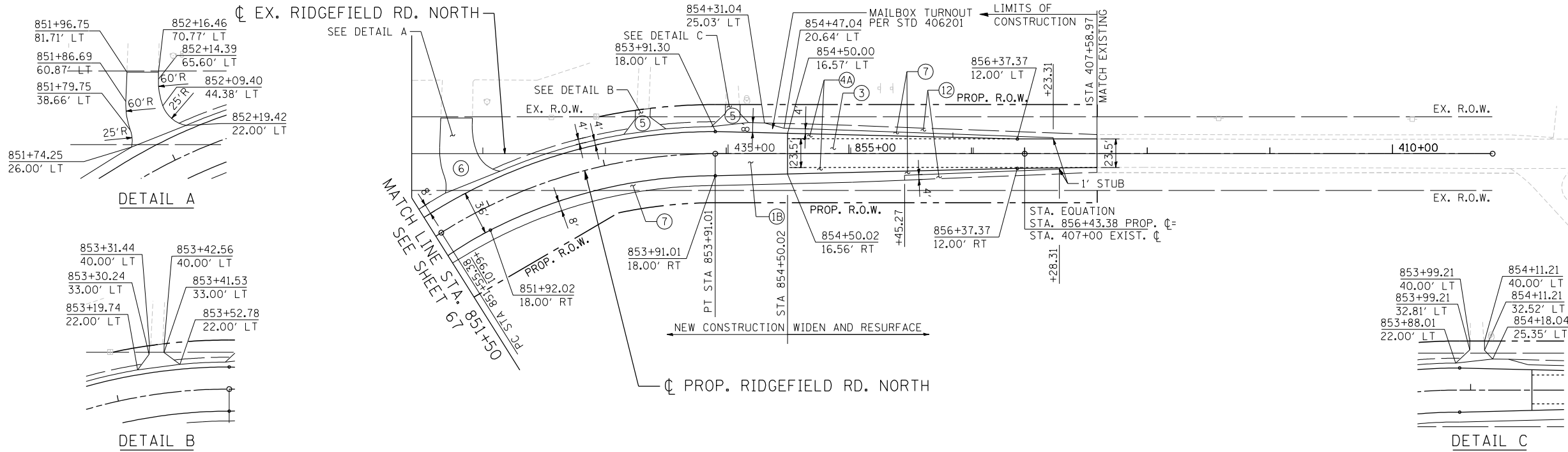


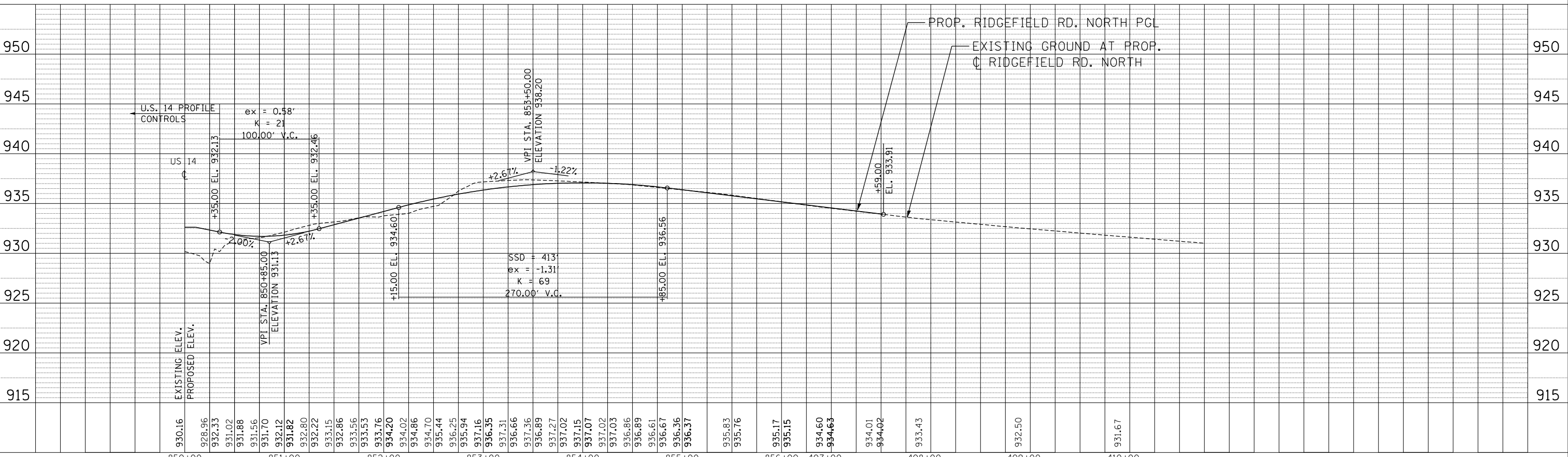
PROPOSED LEGEND • PAVEMENT DESIGN INCLUDES AGGREGATE SUBGRADE IMPROVEMENT, 12" (SEE TYPICAL SECTIONS)

- | | | | |
|--|--|---|--|
| <p>① US ROUTE 14*
P.C.C. PAVEMENT 9 3/4" JOINTED
STABILIZED SUBBASE (HMA) 4 1/2"</p> <p>①A LILY POND*
HMA ASPHALT PAVT (FULL-DEPTH), 8 1/4"
HMA SURFACE COURSE, MIX "D", N70, 2"
HMA BINDER COURSE, IL-19, N70, 6 1/4"
N. RIDGEFIELD*</p> <p>①B HMA ASPHALT PAVT (FULL DEPTH), 9"
HMA SURFACE COURSE, MIX "D", N70, 2"
HMA BINDER COURSE, IL-19, N70, 7"
US ROUTE 14 RESURFACING</p> <p>①C HMA SURFACE COURSE, MIX "D", N70 1 3/4"
POLY LEV BIND MM IL-4.75 N50 3/4"</p> | <p>② MULTI-USE PATH
HMA SURFACE COURSE, MIX "D", N50, 1 1/2"
HMA BINDER COURSE, IL-19, N50, 2 1/2"
AGGREGATE BASE COURSE, TYPE B 10"
(SEE NOTE 14 & 26 SHEET 3)</p> <p>③ N. RIDGEFIELD RESURFACING
HMA SURFACE COURSE, MIX "D", N70, 2"
LEV BIND MM N70 3/4" & VARIES</p> <p>③A LILY POND RESURFACING
HMA SURFACE COURSE, MIX "D", N70, 2"
LEV BIND MM N70 3/4" & VARIES</p> | <p>④ LILY POND WIDENING*
HMA SURFACE COURSE, MIX "D", N70, 2"
LEV BIND MM N70 3/4" & VARIES
HMA BASE COURSE WIDENING, 6 1/4"
N. RIDGEFIELD WIDENING*</p> <p>④A HMA SURFACE COURSE, MIX "D", N70, 2"
LEV BIND MM N70 3/4" & VARIES
HMA BASE COURSE WIDENING, 7"
PRIVATE ENTRANCE DRIVEWAY</p> <p>⑤ HMA SURFACE COURSE, MIX "D", N50, 2"
HMA BASE COURSE, 6"
COMMERCIAL ENTRANCE DRIVEWAY</p> <p>⑥ HMA SURFACE COURSE, MIX "D", N50, 2"
HMA BASE COURSE, 8"</p> | <p>FIELD ENTRANCE DRIVEWAY
⑥A HMA SURFACE COURSE, MIX "D", N50, 2"
AGGREGATE BASE COURSE, TYPE B 8"</p> <p>⑦ HMA SHOULDERS, 8"</p> <p>⑧ PCC SHOULDERS, 9 3/4"</p> <p>⑨ CONCRETE MEDIAN SURFACE 4"</p> <p>⑩ AGGREGATE SHOULDERS, TYPE B 6"</p> <p>⑪ LANDSCAPE MEDIAN (SEE LANSCAPING PLANS)</p> <p>⑫ AGGREGATE SHOULDERS, TYPE B 8"</p> <p>⑬ AGGREGATE WEDGE SHOULDER, TYPE B</p> |
|--|--|---|--|

PLAN	SURVEYED	BY	DATE
	PLOTTED		
	GRADES CHECKED		
	STRUCTURE NOTATIONS CHECKED		
	NO. _____		



PROFILE	SURVEYED	BY	DATE
	PLOTTED		
	GRADES CHECKED		
	STRUCTURE NOTATIONS CHECKED		
	NO. _____		



11-07-2013 16:24:41 HECHTBR T:\DOCUMENT\15134390\CIVIL\UDN\15134390\08R08\08R08.dgn

FILE NAME =	USER NAME = HECHTBR	DESIGNED -	REVISED -	STATE OF ILLINOIS DEPARTMENT OF TRANSPORTATION U.S. ROUTE 14	PROPOSED ROADWAY RIDGEFIELD ROAD NORTH PLAN & PROFILE STA. 851 + 50 TO STA. 857 + 00	F.A.P. RTE.	SECTION	COUNTY	TOTAL SHEETS	SHEET NO.
#FILEL#		DRAWN - RJS	REVISED -			305	27R-2	MCHENRY	673	71
PLOT SCALE = *SCALE*		CHECKED - BRH	REVISED -			CONTRACT NO. 62268				
PLOT DATE = *DATE*		DATE - 11/01/13	REVISED -	SCALE: HORIZ. 1"=50' VERT. 1"=5'		STA. TO STA.		FED. ROAD DIST. NO. 1 ILLINOIS FED. AID PROJECT		

