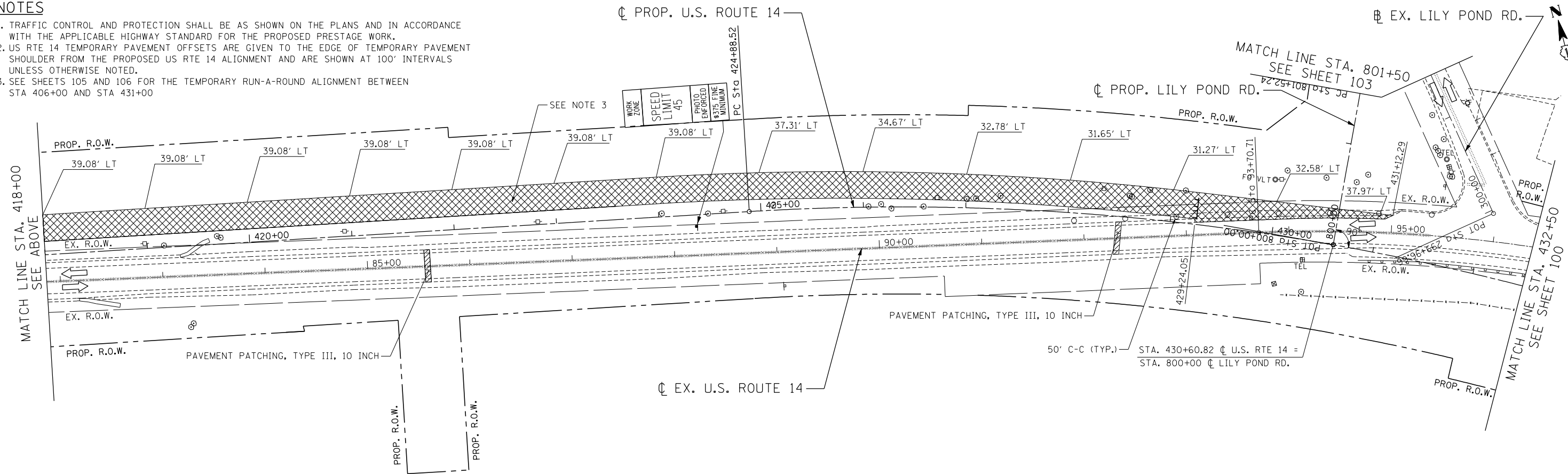


MAINTENANCE OF TRAFFIC LEGEND

	WORK AREA		EXISTING TRAFFIC DIRECTION		ARROW BOARD		1 PVT MK - LINE 4" WHITE		7 PVT MK - LINE 24" WHITE
	TEMPORARY PAVEMENT (CURRENT STAGE)		PROPOSED TRAFFIC DIRECTION		DOUBLE VERTICAL PANEL WITH TYPE C STEADY BURN LIGHT		2 PVT MK - LINE 4" YELLOW		8 PVT MK - LINE 8" WHITE
	TEMPORARY PAVEMENT (PREVIOUS STAGES)		BARRICADE, TYPE III, W/ TYPE A FLASHING LIGHTS		PROPOSED SIGN		3 PVT MK - DBL 4" YELLOW		T TEMP PVT MK
	CONSTRUCTED PAVEMENT		TYPE II BARRICADE OR DRUM W/ TYPE C STEADY BURN BI-DIRECTIONAL LIGHT		TYPE II BARRICADE OR DRUM W/ TYPE A FLASHING LIGHT		4 PVT MK - LINE 6" WHITE		W WET REF TEM TAPE T3
			TYPE B MONO-DIRECTIONAL FLASHING LIGHT		PVT MK - LINE 12"		5 PVT MK - LINE 12"		6 PVT MK - LTRS & SYMB

NOTES

1. TRAFFIC CONTROL AND PROTECTION SHALL BE AS SHOWN ON THE PLANS AND IN ACCORDANCE WITH THE APPLICABLE HIGHWAY STANDARD FOR THE PROPOSED PRESTAGE WORK.
2. US RTE 14 TEMPORARY PAVEMENT OFFSETS ARE GIVEN TO THE EDGE OF TEMPORARY PAVEMENT SHOULDER FROM THE PROPOSED US RTE 14 ALIGNMENT AND ARE SHOWN AT 100' INTERVALS UNLESS OTHERWISE NOTED.
3. SEE SHEETS 105 AND 106 FOR THE TEMPORARY RUN-A-ROUND ALIGNMENT BETWEEN STA 406+00 AND STA 431+00



FILE NAME = ... USER NAME = HECHTBR ... DESIGNED - ... REVISED - ... DRAWN - JP ... CHECKED - KA ... DATE - 11/01/13 ... PLOT SCALE = *SCALE* ... PLOT DATE = *DATE*

STATE OF ILLINOIS DEPARTMENT OF TRANSPORTATION U.S. ROUTE 14		MAINTENANCE OF TRAFFIC PRESTAGE STA. 404+00 TO STA. 432+50		F.A.P. RTE. 305	SECTION 27R-2	COUNTY MCHENRY	TOTAL SHEETS 673	SHEET NO. 99
SCALE: 1"=50'				SHEET NO. OF SHEETS STA. TO STA.		CONTRACT NO. 62268		
FED. ROAD DIST. NO. 1 ILLINOIS FED. AID PROJECT								