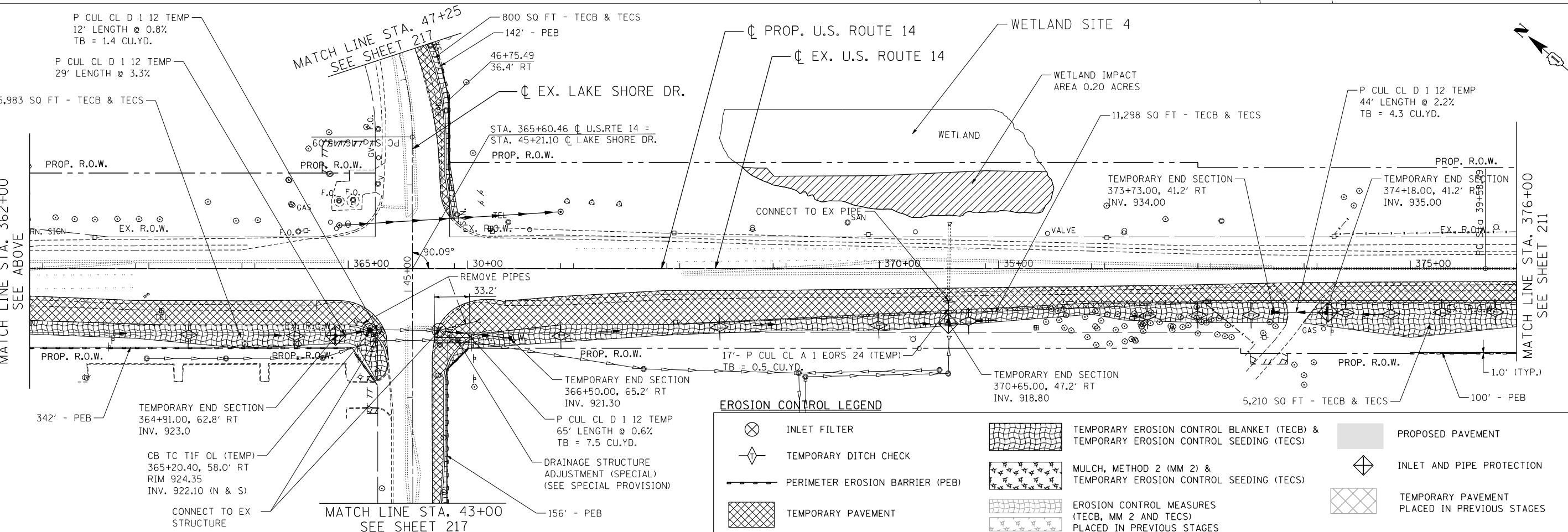


- NOTES:**
1. THE PIPES AND STRUCTURES SHOWN ARE PROPOSED, UNLESS OTHERWISE CALLED AS TEMPORARY. SEE PROPOSED DRAINAGE PLANS FOR PROPOSED PIPE AND STRUCTURE INFORMATION.
  2. SEE NOTE 2 ON SHEET 209.



**EROSION CONTROL LEGEND**

	INLET FILTER		TEMPORARY EROSION CONTROL BLANKET (TECB) & TEMPORARY EROSION CONTROL SEEDING (TECS)		PROPOSED PAVEMENT
	TEMPORARY DITCH CHECK		MULCH, METHOD 2 (MM 2) & TEMPORARY EROSION CONTROL SEEDING (TECS)		INLET AND PIPE PROTECTION
	PERIMETER EROSION BARRIER (PEB)		EROSION CONTROL MEASURES (TECB, MM 2 AND TECS) PLACED IN PREVIOUS STAGES		TEMPORARY PAVEMENT PLACED IN PREVIOUS STAGES
	TEMPORARY PAVEMENT				

FILE NAME = ... USER NAME = HECHTBR ... DESIGNED - ... REVISED - ... DRAWN - MRK ... REVISED - ... CHECKED - TKL ... REVISED - ... DATE - 11/01/13 ... REVISED - ...

**STATE OF ILLINOIS**  
**DEPARTMENT OF TRANSPORTATION**  
 U.S. ROUTE 14

**EROSION CONTROL**  
**PRESTAGE**  
**STA. 348+00 TO STA. 376+00**

F.A.P. RTE.	SECTION	COUNTY	TOTAL SHEETS	SHEET NO.
305	27R-2	MCHENRY	673	210
FED. ROAD DIST. NO. 1 ILLINOIS FED. AID PROJECT			CONTRACT NO. 62268	

SCALE: 1"=50' SHEET NO. OF SHEETS STA. TO STA.