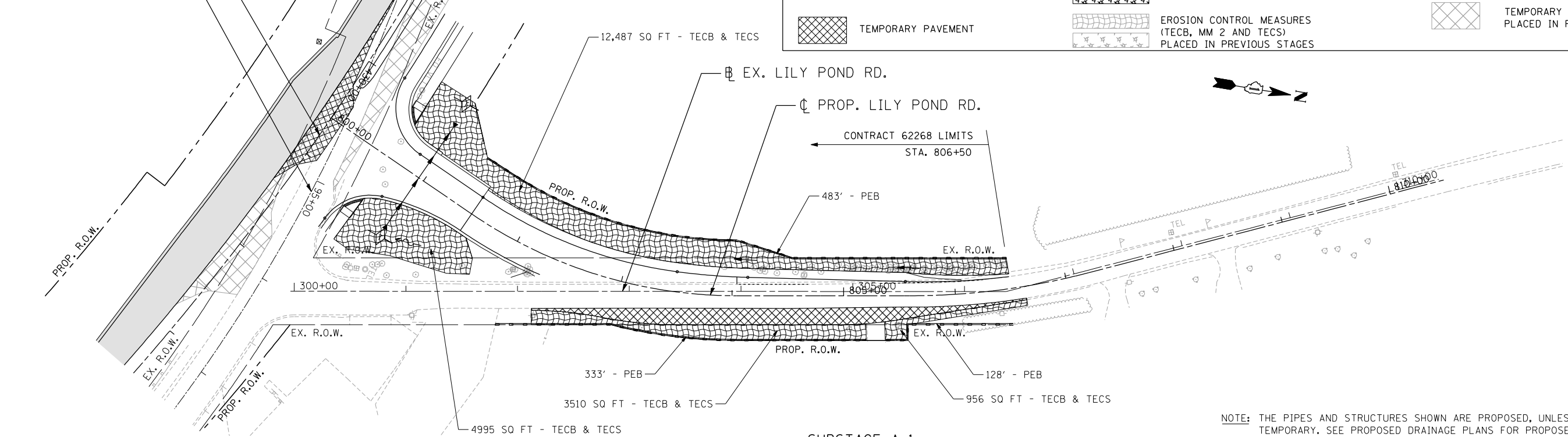


EROSION CONTROL LEGEND

	INLET FILTER		TEMPORARY EROSION CONTROL BLANKET (TECB) & TEMPORARY EROSION CONTROL SEEDING (TECS)		PROPOSED PAVEMENT
	TEMPORARY DITCH CHECK		MULCH, METHOD 2 (MM 2) & TEMPORARY EROSION CONTROL SEEDING (TECS)		INLET AND PIPE PROTECTION
	PERIMETER EROSION BARRIER (PEB)		EROSION CONTROL MEASURES (TECB, MM 2 AND TECS) PLACED IN PREVIOUS STAGES		TEMPORARY PAVEMENT PLACED IN PREVIOUS STAGES
	TEMPORARY PAVEMENT				

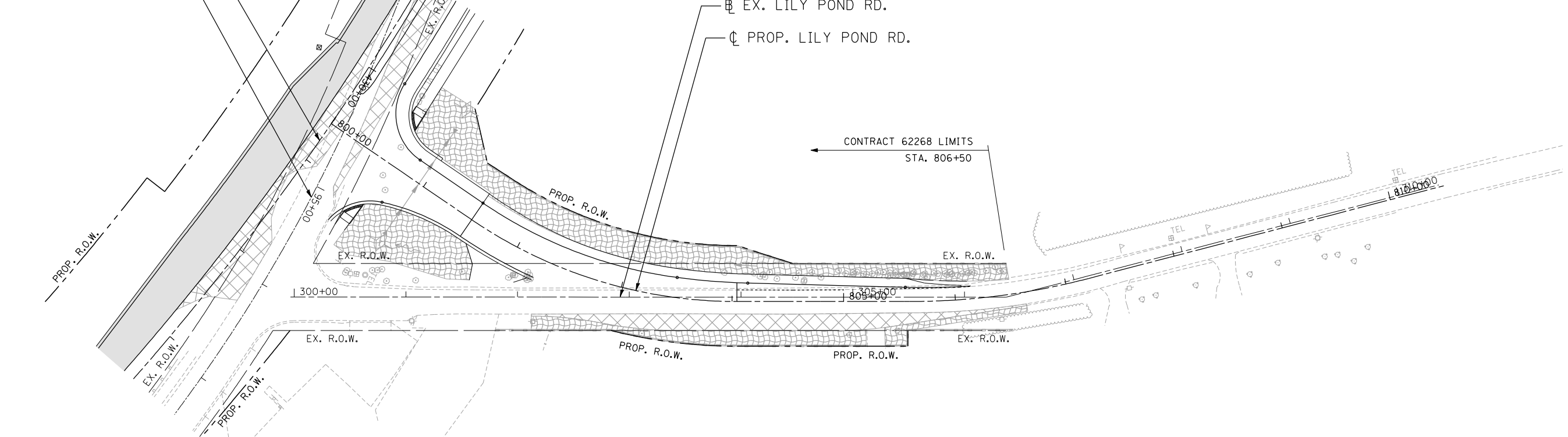
☐ PROP. U.S. ROUTE 14
☐ EX. U.S. ROUTE 14



SUBSTAGE A-1

NOTE: THE PIPES AND STRUCTURES SHOWN ARE PROPOSED, UNLESS OTHERWISE CALLED AS TEMPORARY. SEE PROPOSED DRAINAGE PLANS FOR PROPOSED PIPE AND STRUCTURE INFORMATION.

☐ PROP. U.S. ROUTE 14
☐ EX. U.S. ROUTE 14



SUBSTAGE A-2

FILE NAME = ... USER NAME = HECHTBR ... DESIGNED - ... REVISED - ...
 #FILEL# ... DRAWN - MRK ... REVISED - ...
 exp U.S. Services Inc. ... CHECKED - TKL ... REVISED - ...
 BUILDINGS-EARTH & ENVIRONMENT-ENERGY ... DATE - 11/01/13 ... REVISED - ...
 INDUSTRIAL-INFRASTRUCTURE-SUSTAINABILITY

STATE OF ILLINOIS
DEPARTMENT OF TRANSPORTATION
U.S. ROUTE 14

EROSION CONTROL
STAGE 2.1 SUBSTAGE A-1 & A-2
LILY POND ROAD

F.A.P. RTE.	SECTION	COUNTY	TOTAL SHEETS	SHEET NO.
305	27R-2	MCHENRY	673	245
CONTRACT NO. 62268			FED. ROAD DIST. NO. 1 ILLINOIS FED. AID PROJECT	

SCALE: 1"=50' SHEET NO. OF SHEETS STA. TO STA.