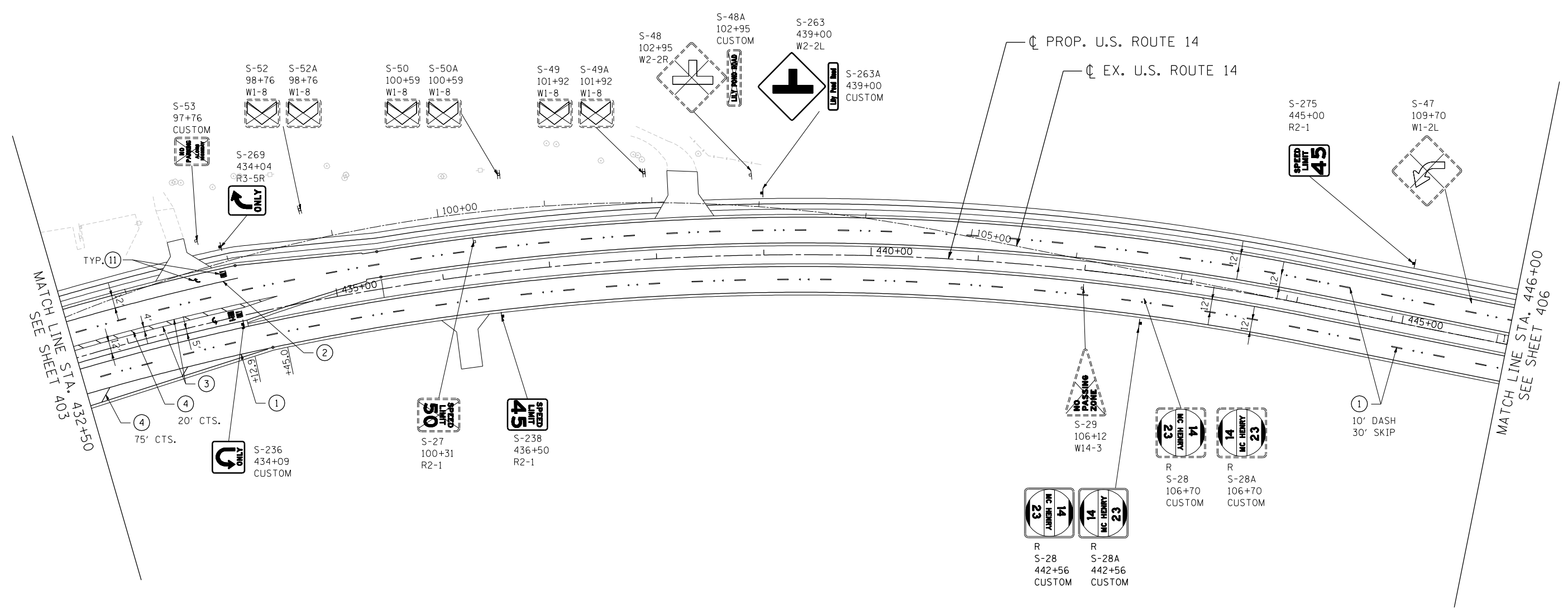
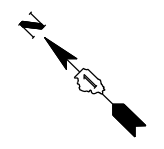


**PAVEMENT MARKING & SIGNING LEGEND**

① PAVEMENT MARKING - LINE 4" WHITE	⑦ PAVEMENT MARKING - LINE 6" YELLOW	EX. SIGN TO BE REMOVED ONLY	PROP. LOCATION OF RELOCATED EX. SIGN
② PAVEMENT MARKING - LINE 6" WHITE	⑧ PAVEMENT MARKING - LINE 8" YELLOW	EX. SIGN TO BE REMOVED AND RELOCATED	PROP. GROUND SIGN
③ PAVEMENT MARKING - LINE 8" WHITE	⑨ PAVEMENT MARKING - LINE 12" YELLOW		⊥ EXISTING GROUND SIGN
④ PAVEMENT MARKING - LINE 12" WHITE	⑩ PAVEMENT MARKING - DOUBLE LINE 4" YELLOW		⊥ PROPOSED GROUND SIGN
⑤ PAVEMENT MARKING - LINE 24" WHITE	⑪ PAVEMENT MARKING - LETTERS AND SYMBOLS		
⑥ PAVEMENT MARKING - LINE 4" YELLOW	◀ ONE-WAY CRYSTAL MARKER		

NOTE:  
SEE SHEET 396 FOR NOTES.



\\PDR008\15.DGN...TTB008\JJ.DGN...GEN008\77.DGN  
 11-07-2013 16:33:36 HECHTBR T:\DOCUMENT\1934\981\CIVIL\DCN\PM00.DWG

FILE NAME = *FILEL*	USER NAME = HECHTBR	DESIGNED -	REVISED -	<b>STATE OF ILLINOIS</b> <b>DEPARTMENT OF TRANSPORTATION</b> U.S. ROUTE 14	<b>PAVEMENT MARKING &amp; SIGNING PLANS</b> <b>STA. 432+50 TO STA. 446+00</b>			F.A.P. RTE.	SECTION	COUNTY	TOTAL SHEETS	SHEET NO.		
exp U.S. Services Inc. Chicago, IL BUILDINGS-EARTH & ENVIRONMENT-ENERGY INDUSTRIAL-INFRASTRUCTURE-SUSTAINABILITY	PLOT SCALE = *SCALE*	DRAWN - AMB	REVISED -		SCALE: 1"=50'	SHEET NO.	OF SHEETS	STA.	TO STA.	305	27R-2	MCHENRY	673	404
	PLOT DATE = *DATE*	CHECKED - TMH	REVISED -											
		DATE - 11/01/13	REVISED -											
										CONTRACT NO. 62268				
										FED. ROAD DIST. NO. 1 ILLINOIS FED. AID PROJECT				