

SCHEDULE OF QUANTITIES

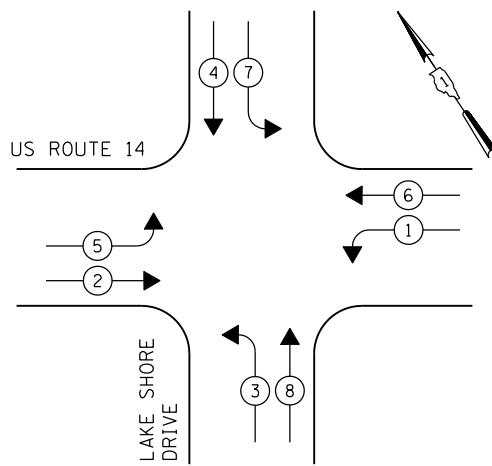
QUANTITY	UNIT	ITEM
15	SO FT	SIGN PANEL - TYPE 1
21.5	SO FT	SIGN PANEL - TYPE 2
1	EACH	SERVICE INSTALLATION - POLE MOUNTED
764	FOOT	UNDERGROUND CONDUIT, GALVANIZED STEEL, 2" DIA.
20	FOOT	UNDERGROUND CONDUIT, GALVANIZED STEEL, 2 1/2" DIA.
47	FOOT	UNDERGROUND CONDUIT, GALVANIZED STEEL, 3" DIA.
362	FOOT	UNDERGROUND CONDUIT, GALVANIZED STEEL, 4" DIA.
5	EACH	HANDHOLE
4	EACH	HEAVY-DUTY HANDHOLE
1	EACH	DOUBLE HANDHOLE
1	EACH	TRANSCEIVER - FIBER OPTIC
198	FOOT	ELECTRIC CABLE IN CONDUIT, SIGNAL NO. 14 2C
516	FOOT	ELECTRIC CABLE IN CONDUIT, SIGNAL NO. 14 3C
1292	FOOT	ELECTRIC CABLE IN CONDUIT, SIGNAL NO. 14 5C
1630	FOOT	ELECTRIC CABLE IN CONDUIT, SIGNAL NO. 14 7C
2260	FOOT	ELECTRIC CABLE IN CONDUIT, LEAD-IN, NO. 14 1 PAIR
33	FOOT	ELECTRIC CABLE IN CONDUIT, SERVICE, NO. 6 2C
580	FOOT	ELECTRIC CABLE IN CONDUIT, EQUIPMENT GROUNDING CONDUCTOR, NO. 6 1C
2	EACH	TRAFFIC SIGNAL POST, GALVANIZED STEEL 16 FT.
1	EACH	STEEL MAST ARM ASSEMBLY AND POLE, 48 FT.
2	EACH	STEEL MAST ARM ASSEMBLY AND POLE, 50 FT.
1	EACH	STEEL MAST ARM ASSEMBLY AND POLE, 54 FT.
8	FOOT	CONCRETE FOUNDATION, TYPE A
4	FOOT	CONCRETE FOUNDATION, TYPE C
58	FOOT	CONCRETE FOUNDATION, TYPE E 36-INCH DIAMETER
6	EACH	SIGNAL HEAD, LED, 1-FACE, 3-SECTION, MAST ARM MOUNTED
4	EACH	SIGNAL HEAD, LED, 1-FACE, 5-SECTION, BRACKET MOUNTED
4	EACH	SIGNAL HEAD, LED, 1-FACE, 5-SECTION, MAST ARM MOUNTED
2	EACH	PEDESTRIAN SIGNAL HEAD, LED, 1-FACE, BRACKET MOUNTED
9	EACH	INDUCTIVE LOOP DETECTOR
804	FOOT	PREFORMED DETECTOR LOOP
2	EACH	LIGHT DETECTOR
1	EACH	LIGHT DETECTOR AMPLIFIER
2	EACH	PEDESTIAN PUSH-BUTTON
1	EACH	TEMPORARY TRAFFIC SIGNAL INSTALLATION
304	FOOT	EMERGENCY VEHICLE PRIORITY SYSTEM LINE SENSOR CABLE, NO. 20 3/C
1	EACH	FULL-ACTUATED CONTROLLER AND TYPE IV CABINET, SPECIAL
1	EACH	UNINTERRUPTIBLE POWER SUPPLY, SPECIAL
1	EACH	TEMPORARY TRAFFIC SIGNAL TIMING
10	EACH	RETROREFLECTIVE TRAFFIC SIGNAL BACKPLATE

• 100% COST TO CITY OF WOODSTOCK

THE END OF THE TRACER CABLE SHALL BE CONTINUOUS AND EXTEND INTO THE CONTROLLER CABINET.

THE END OF THE TRACER CABLE SHALL BE CONTINUOUS AND EXTEND INTO THE CONTROLLER CABINET.

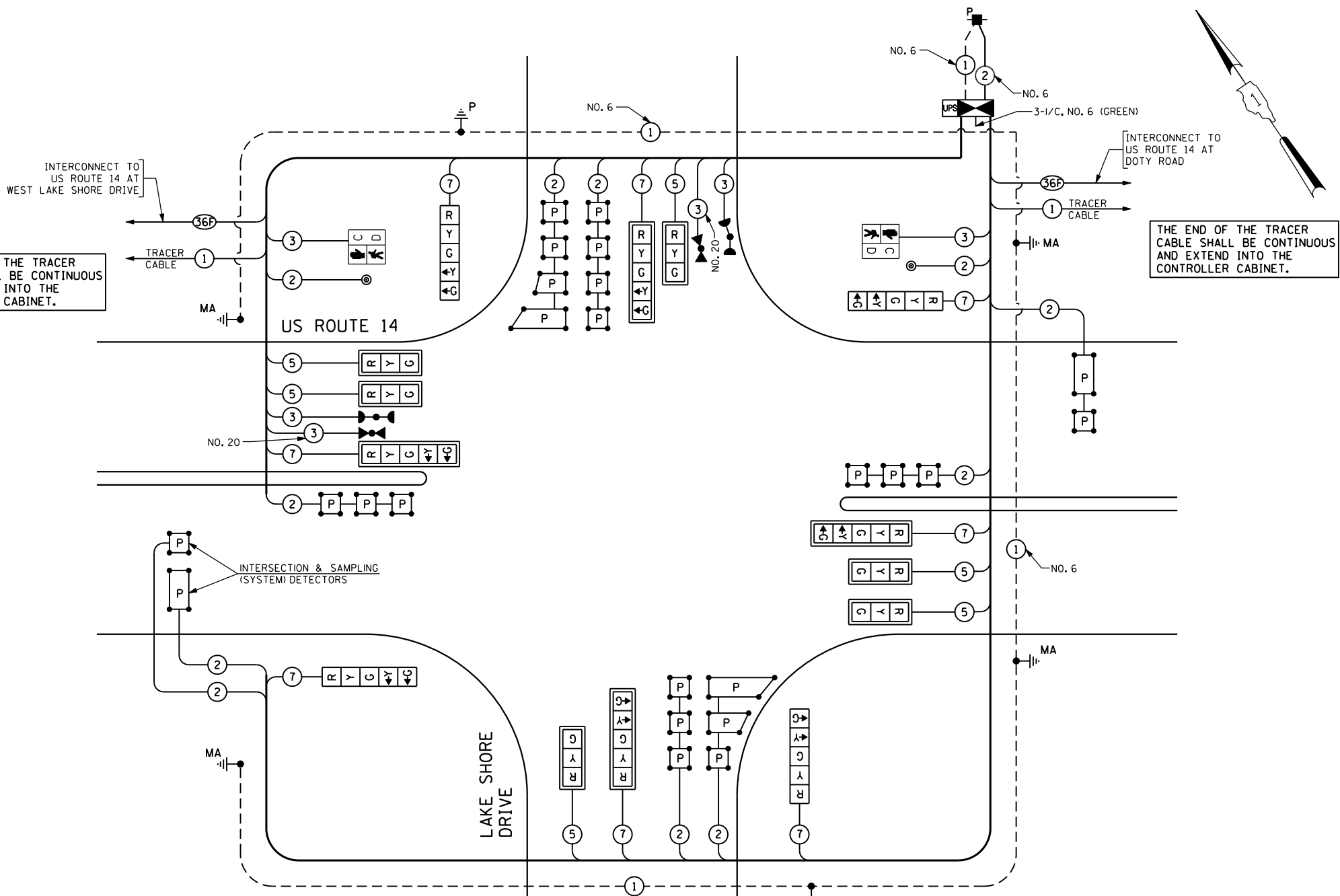
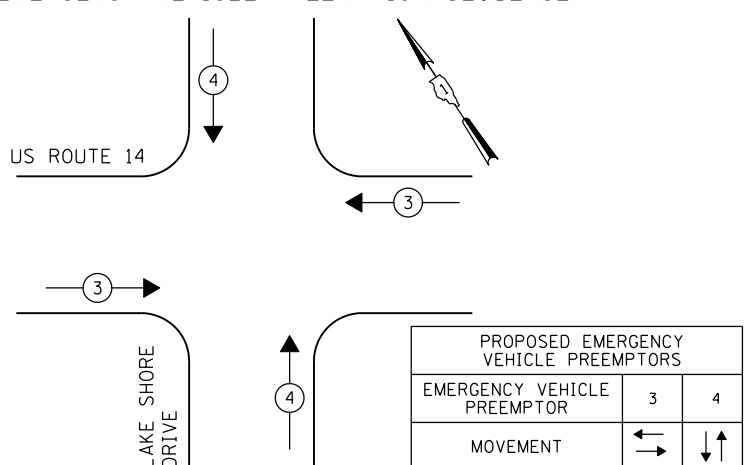
CONTROLLER SEQUENCE



- LEGEND**
- ◉ DUAL ENTRY PHASE
  - ◻ SINGLE ENTRY PHASE
  - ◊ O.L. OVERLAP
  - ◉ PEDESTRIAN PHASE
  - NUMBER REFERS TO ASSOCIATED PHASE

THE TRAFFIC SIGNAL CONTROL EQUIPMENT FOR THIS PROJECT SHALL BE "ECONOLITE" TO MATCH THE EXISTING ADJACENT SYSTEM.

EMERGENCY VEHICLE PREEMPTION SEQUENCE



CABLE PLAN

I.D.O.T. TRAFFIC SIGNAL INSTALLATION ELECTRICAL SERVICE REQUIREMENTS					TOTAL WATTAGE
TYPE	NO LAMPS	WATTAGE	%OPERATION		
		INCAND.	LED		
SIGNAL (RED)	14	135	17	0.50	119
(YELLOW)	14	135	25	0.25	87.5
(GREEN)	14	135	15	0.25	52.5
ARROW	16	135	12	0.10	19.2
PED. SIGNAL	2	90	25	1.00	50
CONTROLLER	1	100	100	1.00	100
ILLUM. SIGN			25	0.05	
FLASHER				0.50	
ENERGY COSTS TO:				TOTAL =	428.2
CITY OF WOODSTOCK 811 REGINA COURT WOODSTOCK, IL 60098					
ENERGY SUPPLY CONTACT: LISA COOK PHONE: (815) 477-5204 COMPANY: COMMONWEALTH EDISON					