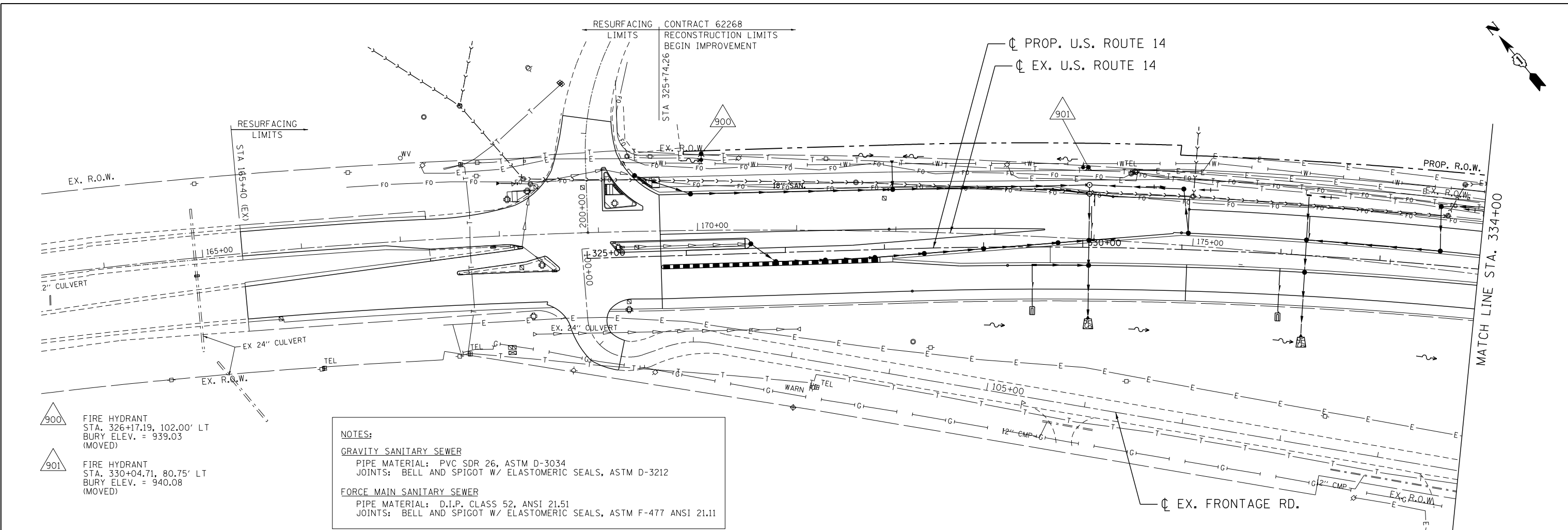


PLAN	SURVEYED	DATE
	PLOTTED	BY
	ALIGNED	
	CHECKED	
	FILED	
	NO. _____	
	NO. _____	
	NO. _____	

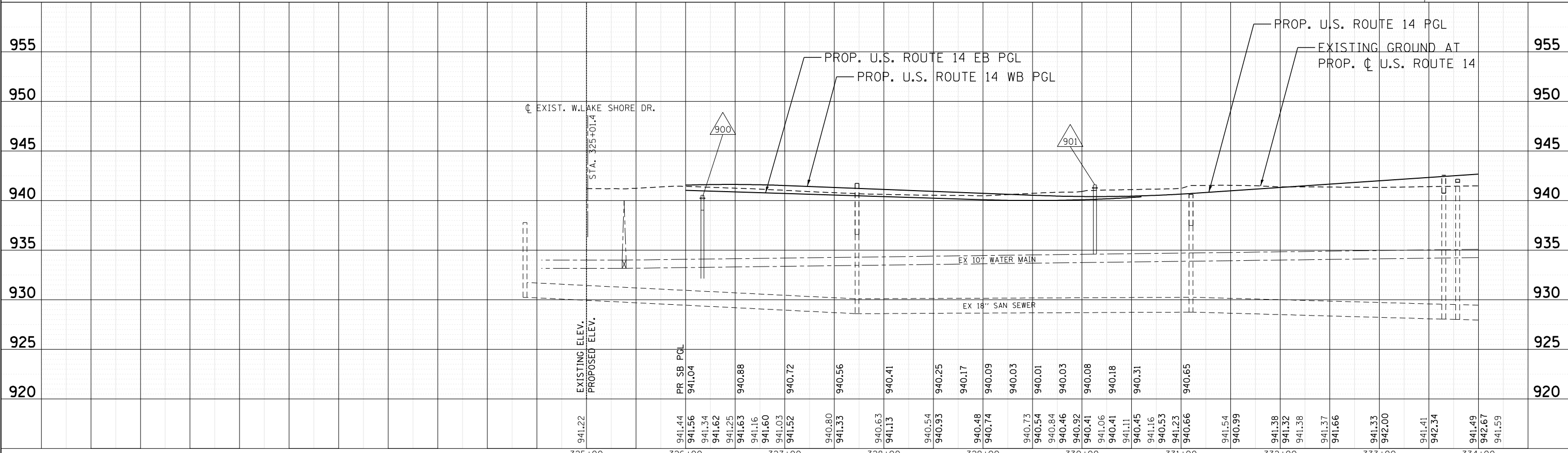
PROFILE	SURVEYED	DATE
	PLOTTED	BY
	GRADES CHECKED	
	STRUCTURE NOTATIONS CHECKED	
	NO. _____	
	NO. _____	
	NO. _____	

COMPANY NAME: HRGreen
 PROJECT CONTACT: HRGreen.com
 CLIENT: Illinois Professional Design Firm
 DATE PLOTTED: 11/27/2012 9:46:33 AM
 FILE NAME: 86110382-ut_pnp_01.DGN
 PLOT NUMBER: 601
 PLOT DATE: 11/27/2012



- 900 FIRE HYDRANT
STA. 326+17.19, 102.00' LT
BURY ELEV. = 939.03
(MOVED)
- 901 FIRE HYDRANT
STA. 330+04.71, 80.75' LT
BURY ELEV. = 940.08
(MOVED)

NOTES:
GRAVITY SANITARY SEWER
 PIPE MATERIAL: PVC SDR 26, ASTM D-3034
 JOINTS: BELL AND SPIGOT W/ ELASTOMERIC SEALS, ASTM D-3212
FORCE MAIN SANITARY SEWER
 PIPE MATERIAL: D.I.P. CLASS 52, ANSI 21.51
 JOINTS: BELL AND SPIGOT W/ ELASTOMERIC SEALS, ASTM F-477 ANSI 21.11



941.22	941.44	941.56	941.34	941.62	941.25	941.63	941.16	941.60	941.03	941.52	940.80	941.33	940.63	941.13	940.54	940.93	940.48	940.74	940.73	940.54	940.84	940.46	940.92	940.41	941.06	940.41	941.11	940.45	941.16	940.53	941.23	940.66	941.54	940.99	941.38	941.32	941.38	941.37	941.66	941.33	942.00	941.41	942.34	941.49	942.67	941.59
EXISTING ELEV.	PR SB PGL																																													

**STATE OF ILLINOIS
 DEPARTMENT OF TRANSPORTATION**

PROPOSED UTILITIES
U.S. ROUTE 14 PLAN & PROFILE
STA. 325+00 TO STA. 334+00
 SCALE: 1"=50' SHEET NO. 1 OF 6 SHEETS STA. 325+00 TO STA. 334+00

F.A.P. R.T.E.	SECTION	COUNTY	TOTAL SHEETS	SHEET NO.
305	27R-2	MCHENRY	673	461
CONTRACT NO. 62268			ILLINOIS FED. AID PROJECT	