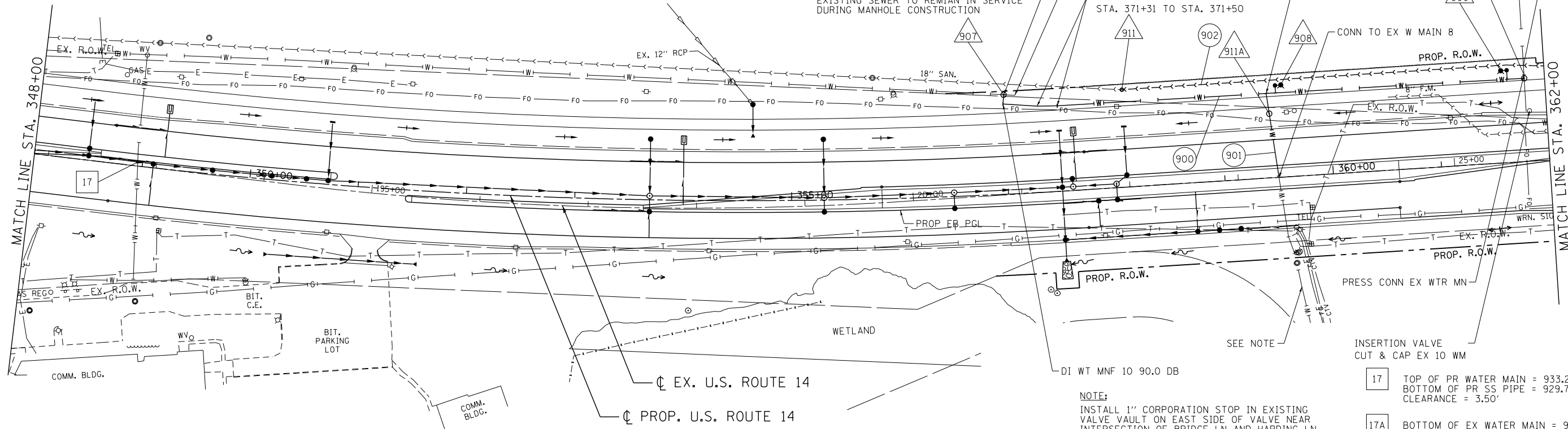


- 905 OMITTED
- 906 OMITTED
- 907 10" GATE VALVE IN VV TA 5 DIA TIF CL STA. 356+99.96, 91.92' LT BURY ELEV = 932.76
- 908 FIRE HYDRANT W/ AUXILIARY VALVE STA. 359+56.84, 84.99' LT BURY ELEV. = 930.70 (MOVED)
- 909 FIRE HYDRANT W/ AUXILIARY VALVE STA. 361+60.00, 85.10' LT BURY ELEV. = 928.55 (MOVED)
- 910 10" GATE VALVE IN VV TA 5 DIA TIF CL STA. 361+81.22, 76.72' LT BURY ELEV = 930.07
- 911 MAN TA SAN 4D TIF CL STA. 358+10.41, 90.00' LT RIM = 932.18 INV = 927.58 SE INV = 927.07 NW EXISTING SEWER TO REMAIN IN SERVICE DURING MANHOLE CONSTRUCTION
- 902 648 LIN FT SAN FORCE MAIN 8" @ 1.40%
- 911A 8" GATE VALVE IN VV TA 4 DIA TIF CL STA. 359+44.47, 61.07' LT BURY ELEV. = 928.09
- 900 490 LIN FT WATER MAIN 10"
- 901 79 LIN FT WATER MAIN 8"

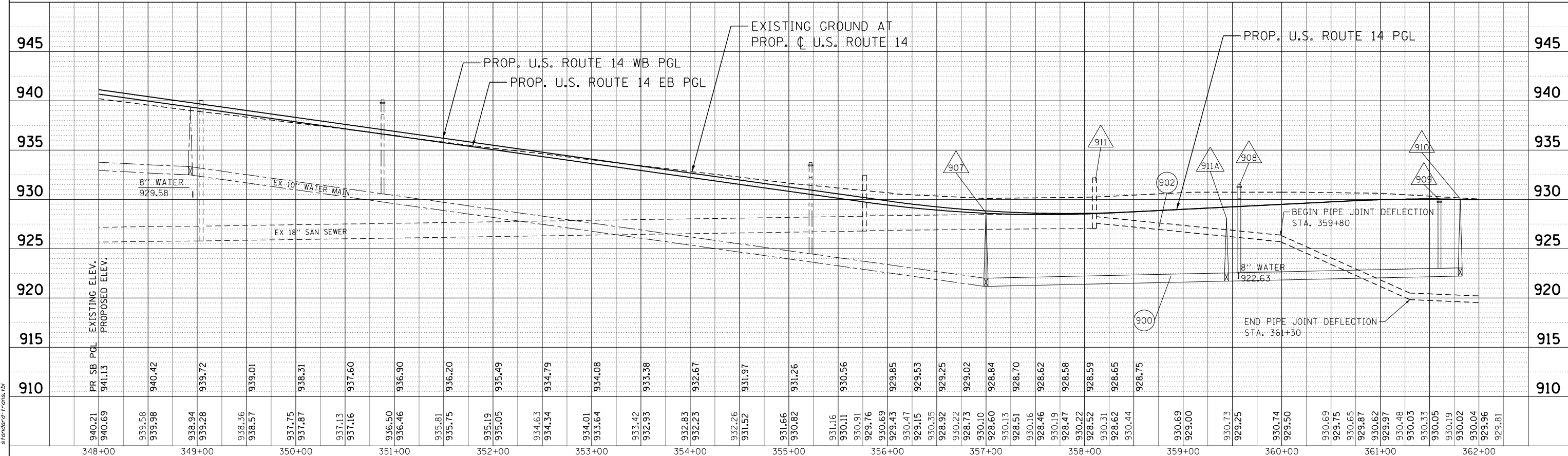
PLAN	SURVEYED	DATE
	PLOTTED	BY
	GRADES CHECKED	
	STRUCTURE NOTATIONS OK'D	
	NOTE BOOK NO.	
	CARD FILE NAME	



NOTE:  
INSTALL 1" CORPORATION STOP IN EXISTING VALVE VAULT ON EAST SIDE OF VALVE NEAR INTERSECTION OF BRIDGE LN AND HARDING LN. (INCLUDED IN COST OF WATER MAIN)

- 17 TOP OF PR WATER MAIN = 933.22  
BOTTOM OF PR SS PIPE = 929.72  
CLEARANCE = 3.50'
- 17A BOTTOM OF EX WATER MAIN = 922.19  
TOP OF PR FORCE MAIN = 920.41  
CLEARANCE = 1.78'

PROFILE	SURVEYED	DATE
	PLOTTED	BY
	GRADES CHECKED	
	STRUCTURE NOTATIONS OK'D	
	NOTE BOOK NO.	
	CARD FILE NAME	



COMPANY NAME: HRGreen  
PROJECT CONTACT: spenel  
DATE PLOTTED: 11/27/2012 9:46:20 AM  
FILE NAME: 86110382-ut\_pnp\_03.DGN  
PLOT SCALE: 1"=50'  
PLOT DATE: 11/27/2012

HRGreen  
11200 W. 100th St.  
Overland Park, MO 66207  
816-875-8800  
www.hrgreen.com

USER NAME = spenel	DESIGNED - DCJ	REVISED -
FILE NAME = 86110382-ut_pnp_03.DGN	DRAWN - SMP	REVISED -
PLOT SCALE =	CHECKED - MH	REVISED -
PLOT DATE = 11/27/2012	DATE - 02/08/2012	REVISED -

STATE OF ILLINOIS  
DEPARTMENT OF TRANSPORTATION

PROPOSED UTILITIES  
U.S. ROUTE 14 PLAN & PROFILE  
STA. 348+00 TO STA. 362+00

SCALE: 1"=50' SHEET NO. 3 OF 6 SHEETS STA. 348+00 TO STA. 362+00

F.A.P. RTE. 305	SECTION 27R-2	COUNTY MCHENRY	TOTAL SHEETS 673	SHEET NO. 463
CONTRACT NO. 62268			ILLINOIS FED. AID PROJECT	