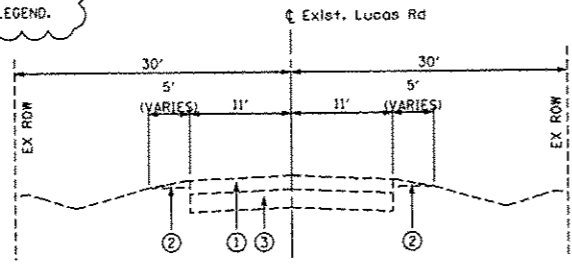
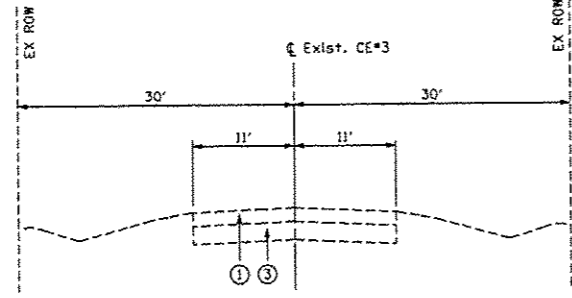


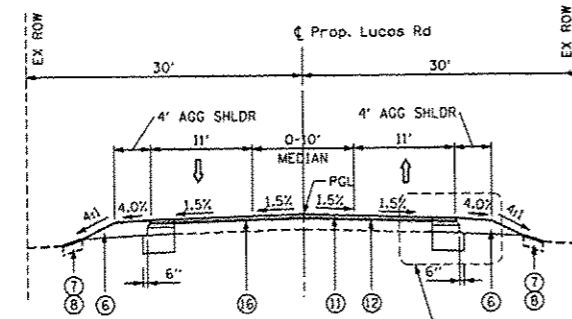
REVISIONS TO CC&G TYPE, PGE LIMIT CALLOUTS, PAVEMENT JOINTS, NOTES AND PROPOSED LEGEND.



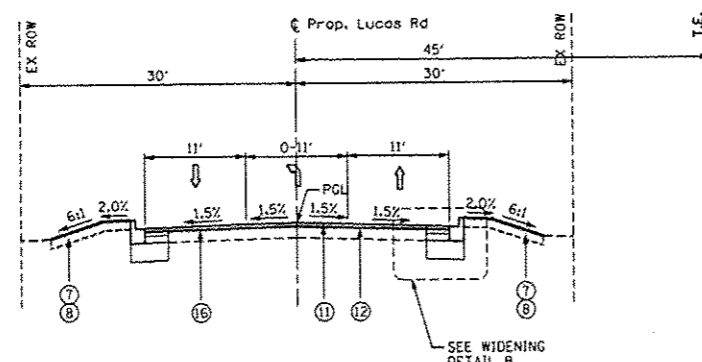
**TYPICAL EXISTING CROSS SECTION
LUCAS ROAD**
STA. 4+00.49 TO STA. 9+07.00



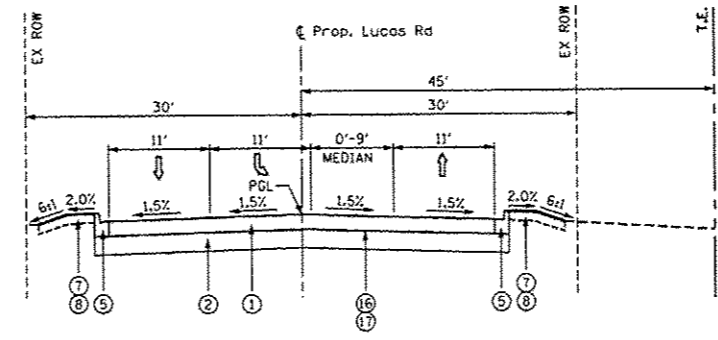
**TYPICAL EXISTING CROSS SECTION
COLLEGE ENTRANCE #3 (TARTON DR)**
STA. 10+92.20 TO STA. 13+70.73



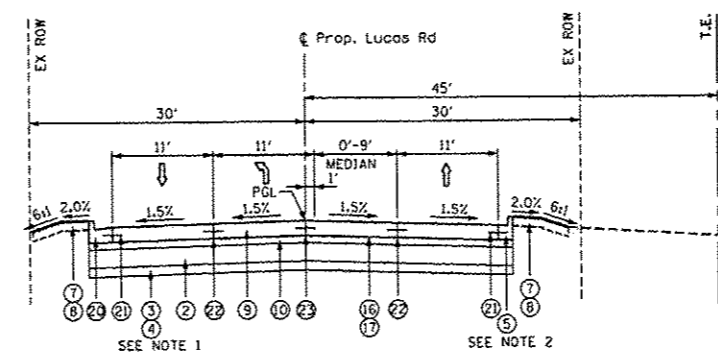
**TYPICAL PROPOSED CROSS SECTION
LUCAS ROAD**
STA. 3+27.60 TO STA. 6+00.00



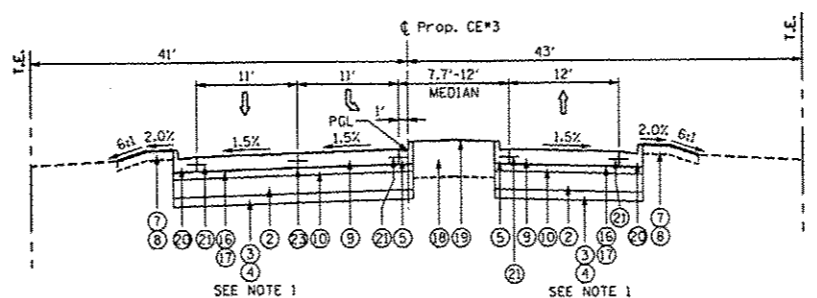
**TYPICAL PROPOSED CROSS SECTION
LUCAS ROAD**
STA. 6+00.00 TO STA. 6+50.00



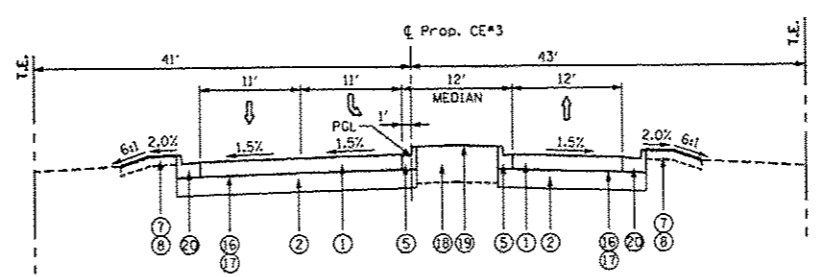
**TYPICAL PROPOSED CROSS SECTION
LUCAS ROAD**
STA. 6+50.00 TO STA. 8+38.10



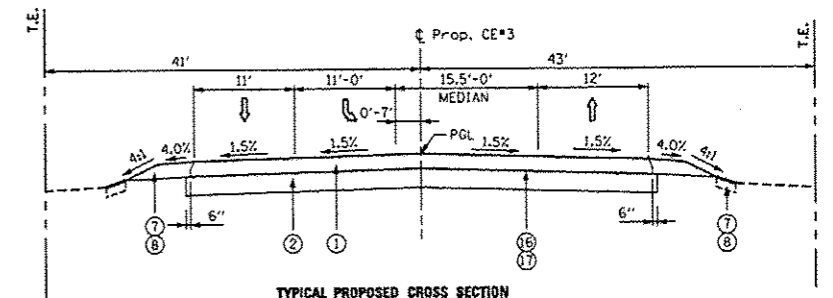
**TYPICAL PROPOSED CROSS SECTION
LUCAS ROAD / COLLEGE ENTRANCE #3 (TARTON DR)**
STA. 8+38.10 TO STA. 10+67.00



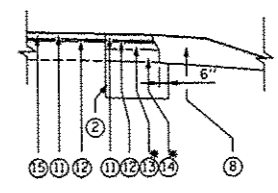
**TYPICAL PROPOSED CROSS SECTION
COLLEGE ENTRANCE #3 (TARTON DR)**
STA. 10+67.00 TO STA. 12+01.30



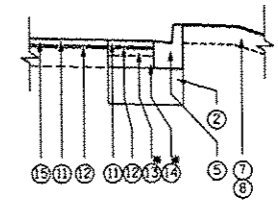
**TYPICAL PROPOSED CROSS SECTION
COLLEGE ENTRANCE #3 (TARTON DR)**
STA. 12+01.30 TO STA. 13+01.00



**TYPICAL PROPOSED CROSS SECTION
COLLEGE ENTRANCE #3 (TARTON DR)**
STA. 13+01.00 TO STA. 15+76.30



WIDENING DETAIL A
* SEE NOTE 8 ON SHEET 16



WIDENING DETAIL B
* SEE NOTE 8 ON SHEET 16

- NOTES:**
- PGE WITHIN US RTE 14 MAINLINE PAVEMENT
 - CC&G B-6.12 TRANSITIONS TO CC&G B-6.24 AT STA. 9+16.46

EXISTING LEGEND

- EXISTING HMA PAVEMENT, (COLLEGE ENTRANCE #3 - 5', LUCAS RD - 9')
- EXISTING AGGREGATE SHOULDER, 6"
- EXISTING AGGREGATE SUBGRADE, 12"

PROPOSED LEGEND

- HOT-MIX ASPHALT PAVEMENT (FULL-DEPTH), 9"
- AGGREGATE SUBGRADE IMPROVEMENT 12"
- POROUS GRANULAR EMBANKMENT
- REMOVAL AND DISPOSAL OF UNSUITABLE MATERIAL
- COMBINATION CONCRETE CURB AND GUTTER, TYPE B-6.12
- AGGREGATE SHOULDERS, TYPE B 9"
- PROPOSED TOPSOIL, 6" (SEE NOTE 6 ON SHEET 16)
- SEEDING, CLASS 2A
- PORTLAND CEMENT CONCRETE PAVEMENT 9 3/4" (JOINTED)
- STABILIZED SUBBASE - HOT-MIX ASPHALT, 4 1/2"
- HOT-MIX ASPHALT SURFACE COURSE, MIX "D", N70, 1 1/2"
- POLYMERIZED LEVELING BINDER (MACHINE METHOD), IL-4.75, N50 2 1/4"
- HOT-MIX ASPHALT BINDER COURSE, IL-19.0, N70 2 1/4"
- HOT-MIX ASPHALT BASE COURSE WIDENING, 4 1/2"
- HOT-MIX ASPHALT SURFACE REMOVAL, 2 1/4"
- BITUMINOUS MATERIALS (PRIME COAT)
- AGGREGATE (PRIME COAT)
- TOPSOIL FURNISH AND PLACE, 24"
- SEEDING, CLASS 2A
- COMBINATION CONCRETE CURB AND GUTTER, TYPE B-6.24
- NO. 6 EPOXY COATED TIE BARS 24" LONG @ 24" CTS
- LONGITUDINAL CONSTRUCTION JOINT, WITH NO. 6 EPOXY COATED TIE BARS 30" LONG AT 24" CTS
- LONGITUDINAL SAWED JOINT, WITH NO. 6 EPOXY COATED TIE BARS 30" LONG AT 30" CTS

FILE NAME *	USER NAME - USERNAME	DESIGNED - JPW	REVISED - 7/14/2014 HWL
SN1686\CADD Sheets\0162517-ht-typical	Addendum - V81.dgn	DRAWN - JPW	REVISED -
	PLOT SCALE = 28.800' / IN.	CHECKED - MCZ	REVISED -
	PLOT DATE = 7/14/2014	DATE - 10/15/2013	REVISED -

**STATE OF ILLINOIS
DEPARTMENT OF TRANSPORTATION**

**TYPICAL SECTIONS
LUCAS RD & COLLEGE ENTRANCE #3 (TARTON DR)**

F.A. RTE.	SECTION	COUNTY	TOTAL SHEETS	SHEET NO.
305	27R-3	MCHENRY	431	14
			CONTRACT NO. 62517	
ILLINOIS FED. AID PROJECT				