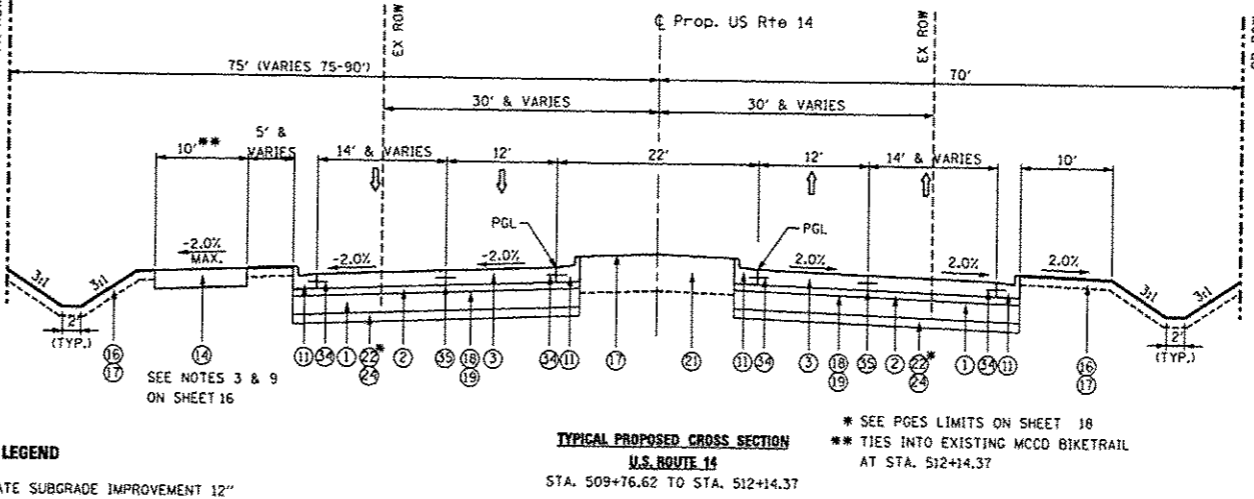
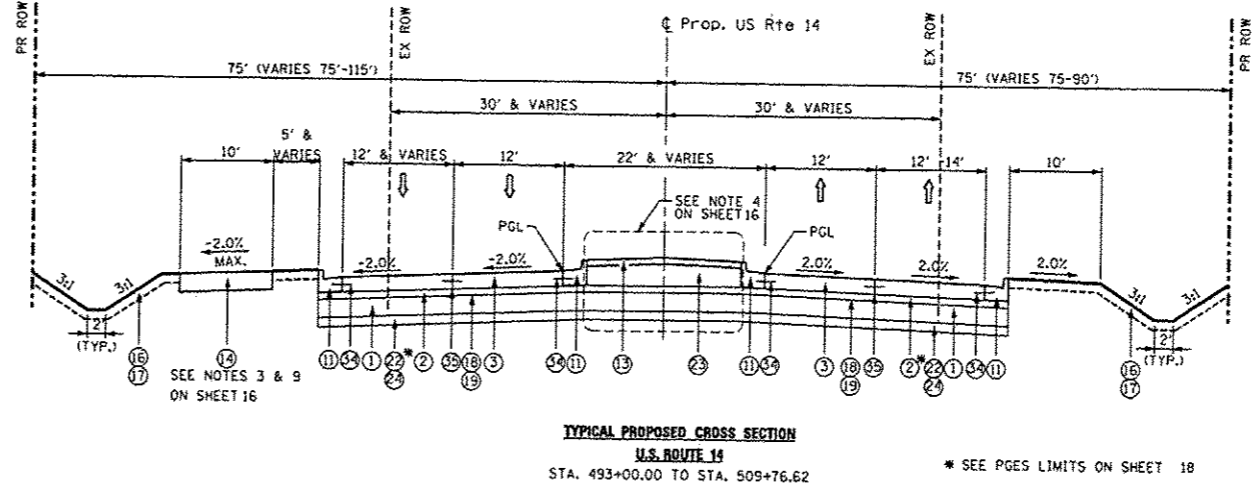
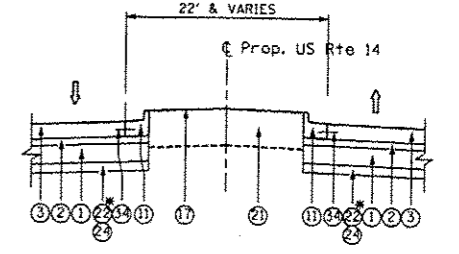
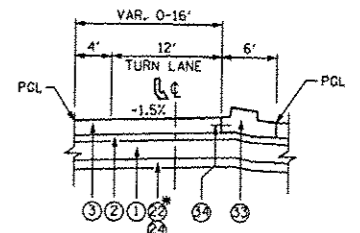
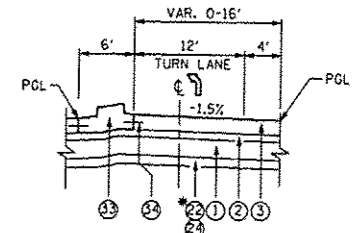
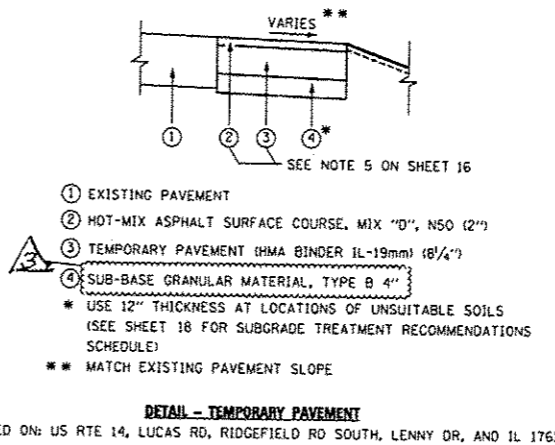


- EXISTING LEGEND**
- 1 EXISTING HMA PAVEMENT (VARIES 12"-18")
 - 2 EXISTING HMA PAVEMENT (VARIES 12"-16")
 - 3 EXISTING HMA PAVEMENT (VARIES 9"-12")
 - 4 EXISTING AGGREGATE SUBGRADE (VARIES 6"-18")
 - 5 EXISTING PCC PAVEMENT (VARIES 6"-8")
 - 6 EXISTING HMA SURFACE COURSE, 1 1/4"
 - 7 EXISTING HMA BINDER, 3/4"
 - 8 EXISTING HMA SURFACE, 5"
 - 9 EXISTING PORTLAND CEMENT CONCRETE PAVEMENT, 9"
 - 10 EXISTING AGGREGATE SHOULDER, 6"
 - 11 EXISTING COMBINATION CURB AND GUTTER, TYPE B-6.24
 - 12 EXISTING CONCRETE SIDEWALK
 - 13 EXISTING TOPSOIL, 6"



- PROPOSED LEGEND**
- 1 AGGREGATE SUBGRADE IMPROVEMENT 12"
 - 2 STABILIZED SUBBASE - HOT-MIX ASPHALT, 4 1/2"
 - 3 PORTLAND CEMENT CONCRETE PAVEMENT 9 1/4" (JOINTED)
 - 4 HOT-MIX ASPHALT SURFACE COURSE, MIX "D", N70, 1 1/2"
 - 5 POLYMERIZED HOT-MIX ASPHALT SURFACE COURSE, MIX "F", N90, 1 1/4"
 - 6 HOT-MIX ASPHALT PAVEMENT (FULL-DEPTH), 9"
 - 7 HOT-MIX ASPHALT SURFACE REMOVAL, 2 1/2"
 - 8 HOT-MIX ASPHALT SHOULDERS, 9"
 - 9 AGGREGATE SHOULDERS, TYPE B 9"
 - 10 COMBINATION CONCRETE CURB AND GUTTER, TYPE B-6.12
 - 11 COMBINATION CONCRETE CURB AND GUTTER, TYPE B-6.24
 - 12 HOT-MIX ASPHALT SURFACE REMOVAL, 2 1/2"
 - 13 CONCRETE MEDIAN SURFACE, 4 INCH
 - 14 M.C.C.D. BIKETRAIL (SEE NOTE 3 ON SHEET 16)
 - 15 PORTLAND CEMENT CONCRETE SIDEWALK 5 INCH
 - 16 PROPOSED TOPSOIL, 6" (SEE NOTE 6 ON SHEET 16)
 - 17 SEEDING, CLASS 2A
 - 18 BITUMINOUS MATERIALS (PRIME COAT)
 - 19 AGGREGATE (PRIME COAT)
 - 20 NOT USED
 - 21 TOPSOIL FURNISH AND PLACE, 24"
 - 22 POROUS GRANULAR EMBANKMENT
 - 23 COURSE AGGREGATE FILL
 - 24 REMOVAL AND DISPOSAL OF UNSUITABLE MATERIAL
 - 25 ADDITIONAL 1 FOOT PAVEMENT RECONSTRUCTION
 - 26 SODDING, SALT TOLERANT
 - 27 POLYMERIZED LEVELING BINDER (MACHINE METHOD), IL-4.75, N50 - 3/4"
 - 28 HOT-MIX ASPHALT BASE COURSE WIDENING, 4 1/2"
 - 29 HOT-MIX ASPHALT BASE COURSE WIDENING, 9 1/4"
 - 30 PORTLAND CEMENT CONCRETE SHOULDERS 9 1/4"
 - 31 HOT-MIX ASPHALT BINDER COURSE, IL-19.0, N90 (2 1/4")
 - 32 HOT-MIX ASPHALT BINDER COURSE, IL-19.0, N70 2 1/4"
 - 33 CONCRETE MEDIAN, TYPE SB (SPECIAL)
 - 34 NO. 6 EPOXY COATED TIE BARS 24" LONG AT 24" CTS
 - 35 LONGITUDINAL SAWED JOINT, WITH NO. 6 EPOXY COATED TIE BARS 30" LONG AT 30" CTS



FILE NAME = S:\1626\CADD Sheets\162517-shr-typical	USER NAME = .USERNAME Addendum 3 - V01.dgn	DESIGNED - JPW	REVISED - 7/14/2014 HWL	STATE OF ILLINOIS DEPARTMENT OF TRANSPORTATION	TYPICAL SECTIONS U.S. ROUTE 14		F.A. RTE. 305	SECTION 27R-3	COUNTY MCHENRY	TOTAL SHEETS 431	SHEET NO. 12	
	PLOT SCALE = 20,000' / IN.	CHECKED - NGZ	REVISED - 7/24/2014 HWL		SCALE: NONE	SHEET NO. 12 OF 431 SHEETS	STA. TO STA.	CONTRACT NO. 62517				
	PLOT DATE = 7/24/2014	DATE - 10/15/2013	REVISED -		ILLINOIS FED. AID PROJECT							