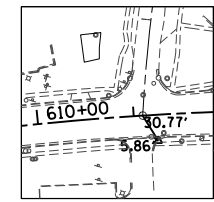


US ROUTE 14		ROCKLAND RD
PROP. CURVE P.AL14-10	PROP. CURVE P.AL14-12	EXIST. CURVE EROCK.N
PI STA. = 611+63.42	PI STA. = 618+23.34	PI STA. = 11+02.02
Δ = 13° 56' 11" (RT)	Δ = 3° 42' 24" (LT)	Δ = 6° 51' 09" (RT)
D = 1° 59' 32"	D = 0° 35' 40"	D = 3° 21' 44"
R = 2,875.91'	R = 9,638.62'	R = 1,704.10'
T = 351.50'	T = 311.89'	T = 102.02'
L = 699.53'	L = 623.56'	L = 203.80'
E = 21.40'	E = 5.04'	E = 3.05'
P.C.C. STA = 608+11.92	P.R.C. STA = 615+11.45	P.C. STA. = 10+00.00
P.R.C. STA = 615+11.45	P.T. STA = 621+35.02	P.T. STA. = 12+03.80

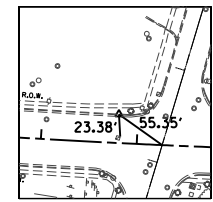
STATION	N	E
PI 611+63.42	2,031,038.62	982,055.80
PRC 615+11.45	2,030,695.14	982,130.46
PI 618+23.34	2,030,390.37	982,196.71
PT 621+35.04	2,030,090.51	982,282.52
POT 621+54.39	2,030,071.86	982,287.75

STATION	N	E
PC 10+00.00	2,031,080.78	982,017.92
PI 11+02.02	2,031,104.64	982,117.12
PT 12+03.80	2,031,116.49	982,218.45

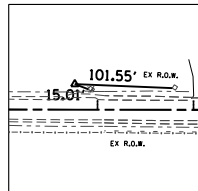
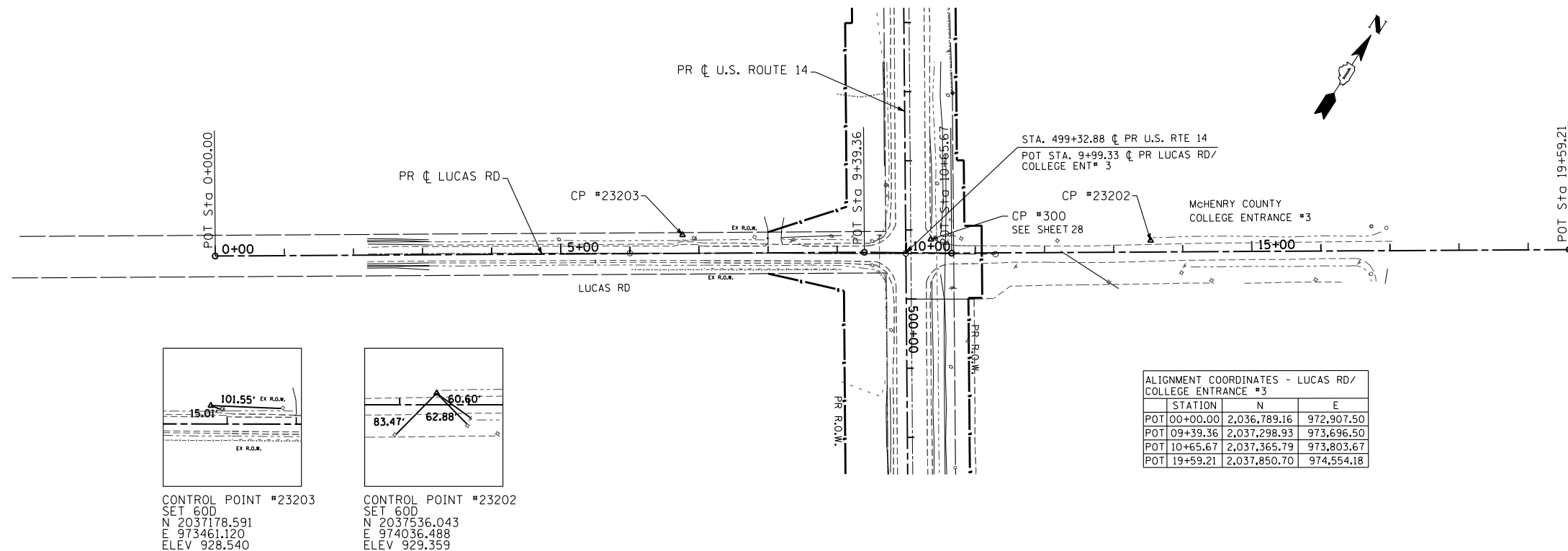
STATION	N	E
POT 10+00.00	2,030,388.30	981,883.71
POT 16+30.13	2,030,388.52	982,513.84



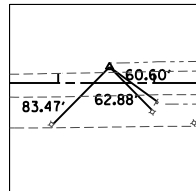
CONTROL POINT #312
SET X
N 2031057.730
E 981997.536
ELEV 906.058



CONTROL POINT #313
SET X
N 2030440.824
E 982220.207
ELEV 904.381



CONTROL POINT #23203
SET 60D
N 2037178.591
E 973461.120
ELEV 928.540



CONTROL POINT #23202
SET 60D
N 2037536.043
E 974036.488
ELEV 929.359

STATION	N	E
POT 00+00.00	2,036,789.16	972,907.50
POT 09+39.36	2,037,298.93	973,696.50
POT 10+65.67	2,037,365.79	973,803.67
POT 19+59.21	2,037,850.70	974,554.18

