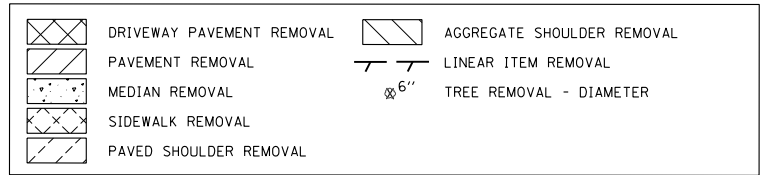
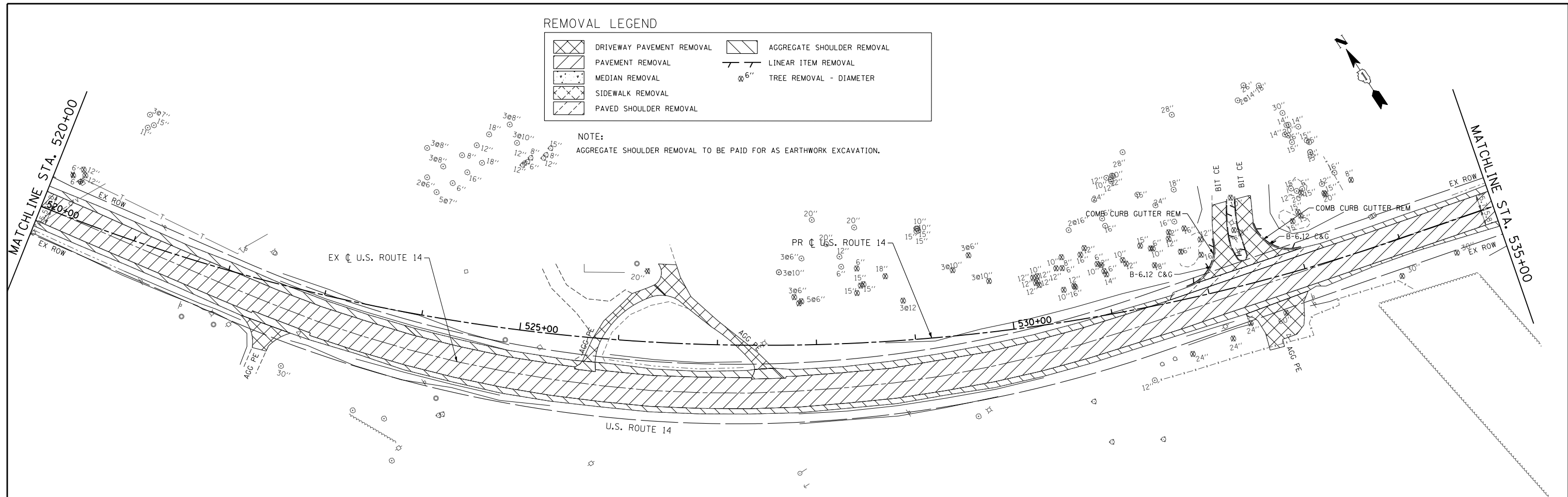


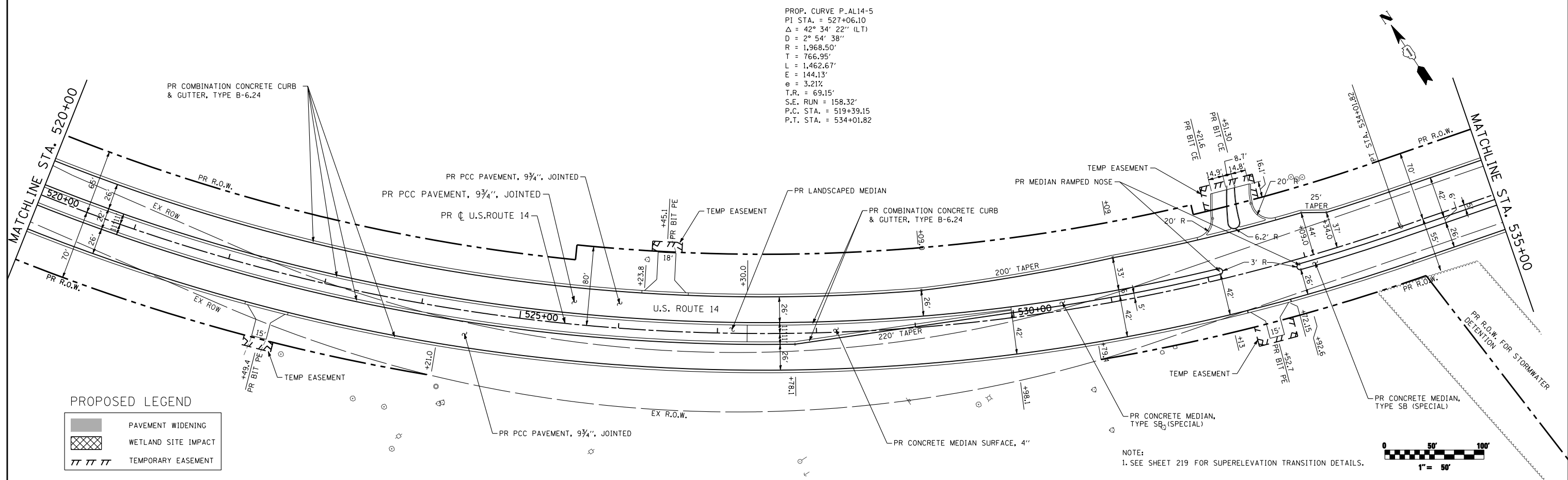
REMOVAL LEGEND



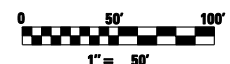
NOTE:
AGGREGATE SHOULDER REMOVAL TO BE PAID FOR AS EARTHWORK EXCAVATION.



PROP. CURVE P-AL14-5
PI STA. = 527+06.10
 $\Delta = 42^\circ 34' 22''$ (LT)
 $D = 2^\circ 54' 38''$
 $R = 1,968.50'$
 $T = 766.95'$
 $L = 1,462.67'$
 $E = 144.13'$
 $\theta = 3.21\%$
 $T.R. = 69.15'$
 $S.E. RUN = 158.32'$
 $P.C. STA. = 519+39.15$
 $P.T. STA. = 534+01.82$



NOTE:
1. SEE SHEET 219 FOR SUPERELEVATION TRANSITION DETAILS.



FILE NAME = S:\1606\CADD Sheets\0162517-sht-plan.dgn	USER NAME = _USERNAME_	DESIGNED - JPW	REVISED -
		DRAWN - JPW	REVISED -
		CHECKED - MGZ	REVISED -
		DATE - 10/15/2013	REVISED -

STATE OF ILLINOIS
DEPARTMENT OF TRANSPORTATION

PLAN US ROUTE 14	
SCALE: 1"=50'	SHEET NO. 34 OF 431 SHEETS
STA. 520+00.00 TO STA. 535+00.00	

F.A.P. RTE.	SECTION	COUNTY	TOTAL SHEETS	SHEET NO.
305	27R-3	MCHENRY	431	34
CONTRACT NO. 62517			ILLINOIS FED. AID PROJECT	