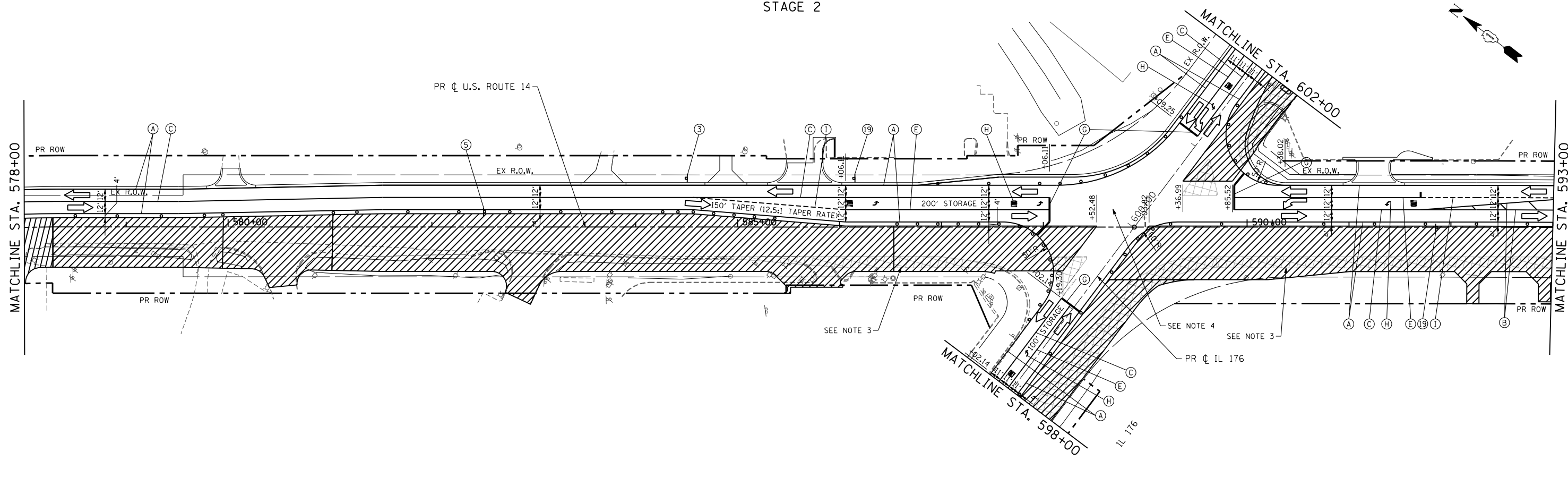
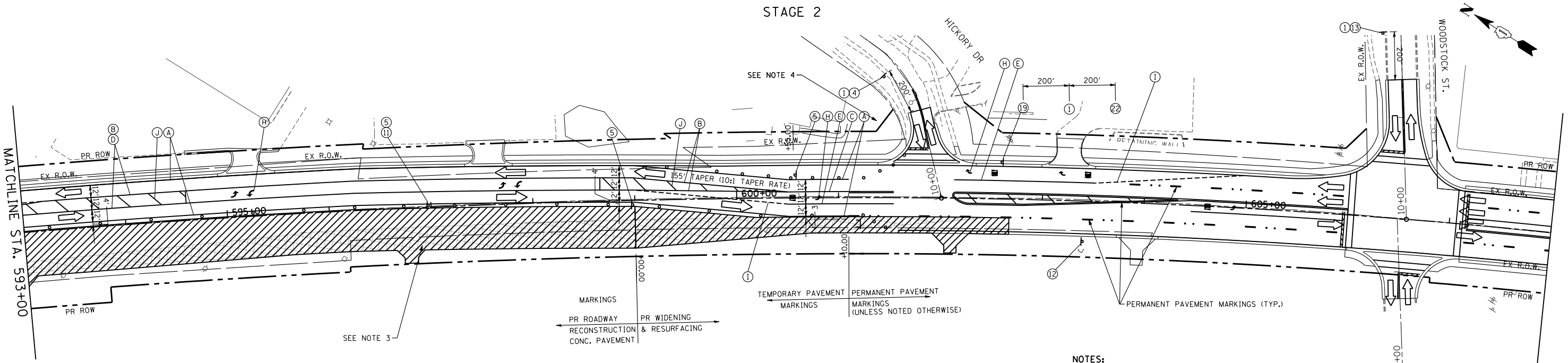


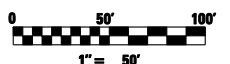
STAGE 2



STAGE 2



- NOTES:**
1. SEE IL 176 AND WOODSTOCK ST. TEMPORARY TRAFFIC SIGNALS SHEETS.
 2. MAINTAIN ACCESS TO ALL DRIVEWAYS AND SIDE STREETS DURING CONSTRUCTION.
 3. TEMPORARY PAVEMENT REMOVAL (BUILT IN PRE-STAGE 1).
 4. PROVIDE MINIMUM 50' TURNING RADII WHEN STAGING US RTE 14/IL 176 INTERSECTION RECONSTRUCTION.
 5. SEE SHEET 59 FOR MAINTENANCE OF CONSTRUCTION GENERAL NOTES, SEQUENCE OF CONSTRUCTION AND TEMPORARY TRAFFIC SIGN LEGEND.
 6. UTILIZE THE EXISTING SPEED LIMIT SIGNS WITHIN CONSTRUCTION LIMITS UNLESS NOTED OTHERWISE. THE SIGNS SIZES SHALL MATCH THE SIZES OF THE EXISTING SIGNS IN FIELD.



FILE NAME = s:\1606\cadd sheets\162517-sht-staging2.dgn	USER NAME = _USERNAME_	DESIGNED - JPW	REVISED -
		DRAWN - JPW	REVISED -
		CHECKED - MGZ	REVISED -
		DATE - 10/15/2013	REVISED -

**STATE OF ILLINOIS
DEPARTMENT OF TRANSPORTATION**

**MAINTENANCE OF TRAFFIC PLAN
US ROUTE 14 - STAGE 2**

SCALE: 1"=50' SHEET NO. 85 OF 431 SHEETS STA. 578+00 TO STA. 608+00

F.A. RTE.	SECTION	COUNTY	TOTAL SHEETS	SHEET NO.
305	27R-3	MCHENRY	431	85
CONTRACT NO. 62517			ILLINOIS FED. AID PROJECT	