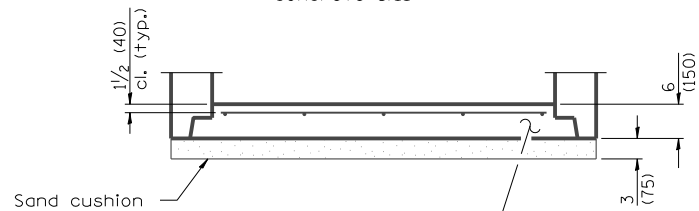
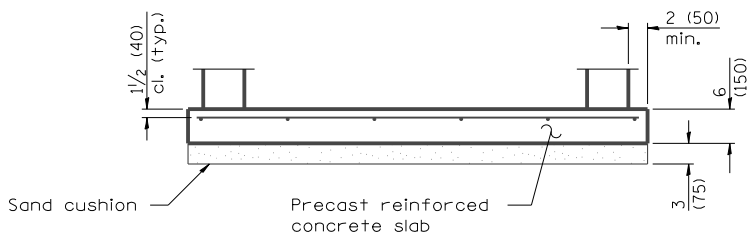


ALTERNATE MATERIALS FOR WALLS	D	C*	T (min.)
Precast Reinforced Concrete Section	4'-0" (1.2 m) 5'-0" (1.5 m)	30 (750) 3'-9" (1.15 m)	4 (100) 5 (125)
Cast-in-place Concrete	4'-0" (1.2 m) 5'-0" (1.5 m)	30 (750) 3'-9" (1.15 m)	6 (150) 6 (150)

* For precast reinforced concrete sections, dimension "C" may vary from the dimension given to plus 6 (150).



ALTERNATE BOTTOM SLAB

GENERAL NOTES

Bottom slabs shall be reinforced with a minimum of 0.31 sq. in./ft. (660 sq. mm/m) in both directions with a maximum spacing of 12 (300).

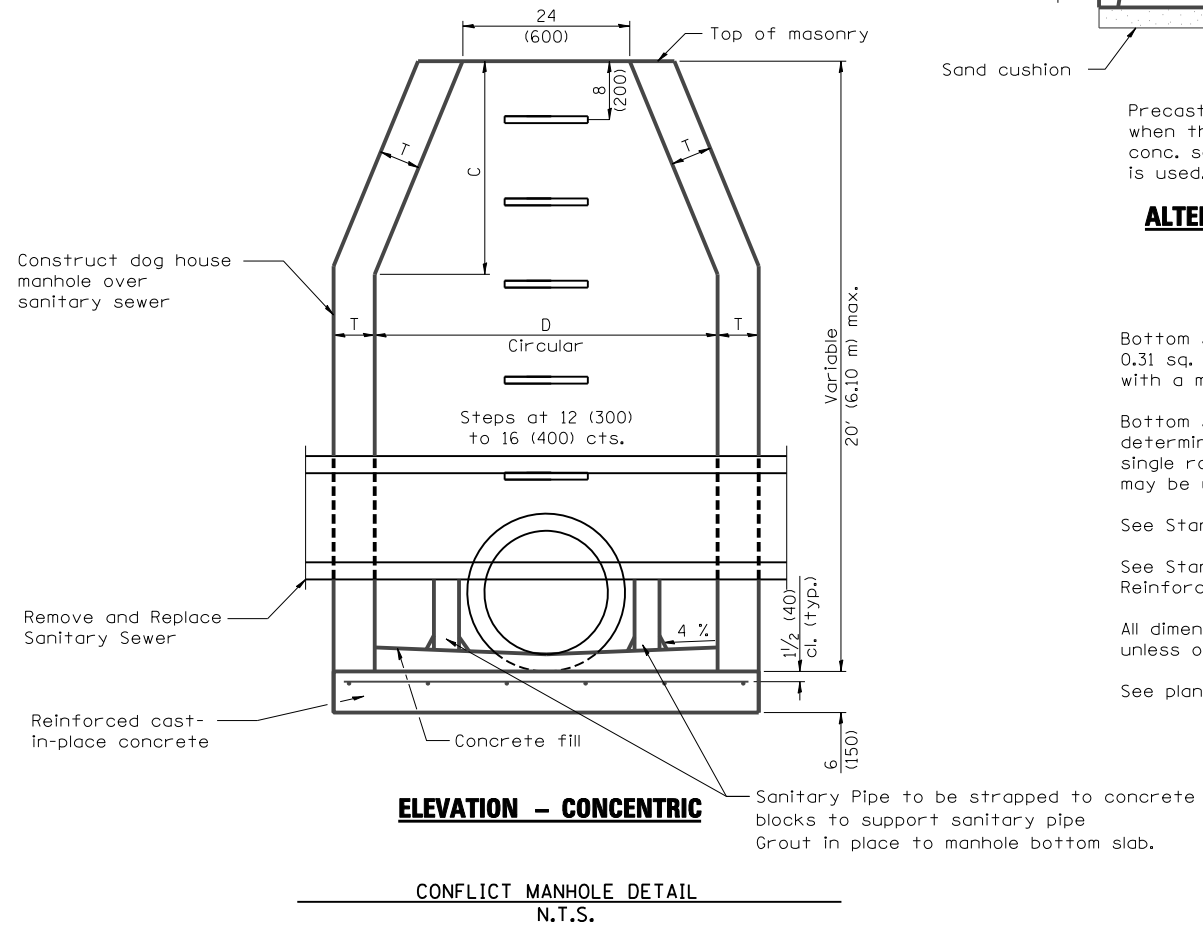
Bottom slabs may be connected to the riser as determined by the fabricator; however, only a single row of reinforcement around the perimeter may be utilized.

See Standard 602701 for details of steps.

See Standard 602601 for optional Precast Reinforced Concrete Flat Slab Top.

All dimensions are in inches (millimeters) unless otherwise shown.

See plans for rim and invert elevations.



ELEVATION - CONCENTRIC

CONFLICT MANHOLE DETAIL
N.T.S.

FILE NAME =	USER NAME = .USERNAME.	DESIGNED - JWM	REVISED -
S:\1606\CADD Sheets\0162517-sht-sanitary.dgn		DRAWN - JWM	REVISED -
		CHECKED - MGZ	REVISED -
		DATE - 10/15/2013	REVISED -

**STATE OF ILLINOIS
DEPARTMENT OF TRANSPORTATION**

SANITARY SEWER CONSTRUCTION DETAILS

SCALE: NONE SHEET NO. 162 OF 431 SHEETS STA. TO STA.

F.A. RTE.	SECTION	COUNTY	TOTAL SHEETS	SHEET NO.
305	27R-3	MCHENRY	431	162
				CONTRACT NO. 62517
ILLINOIS FED. AID PROJECT				