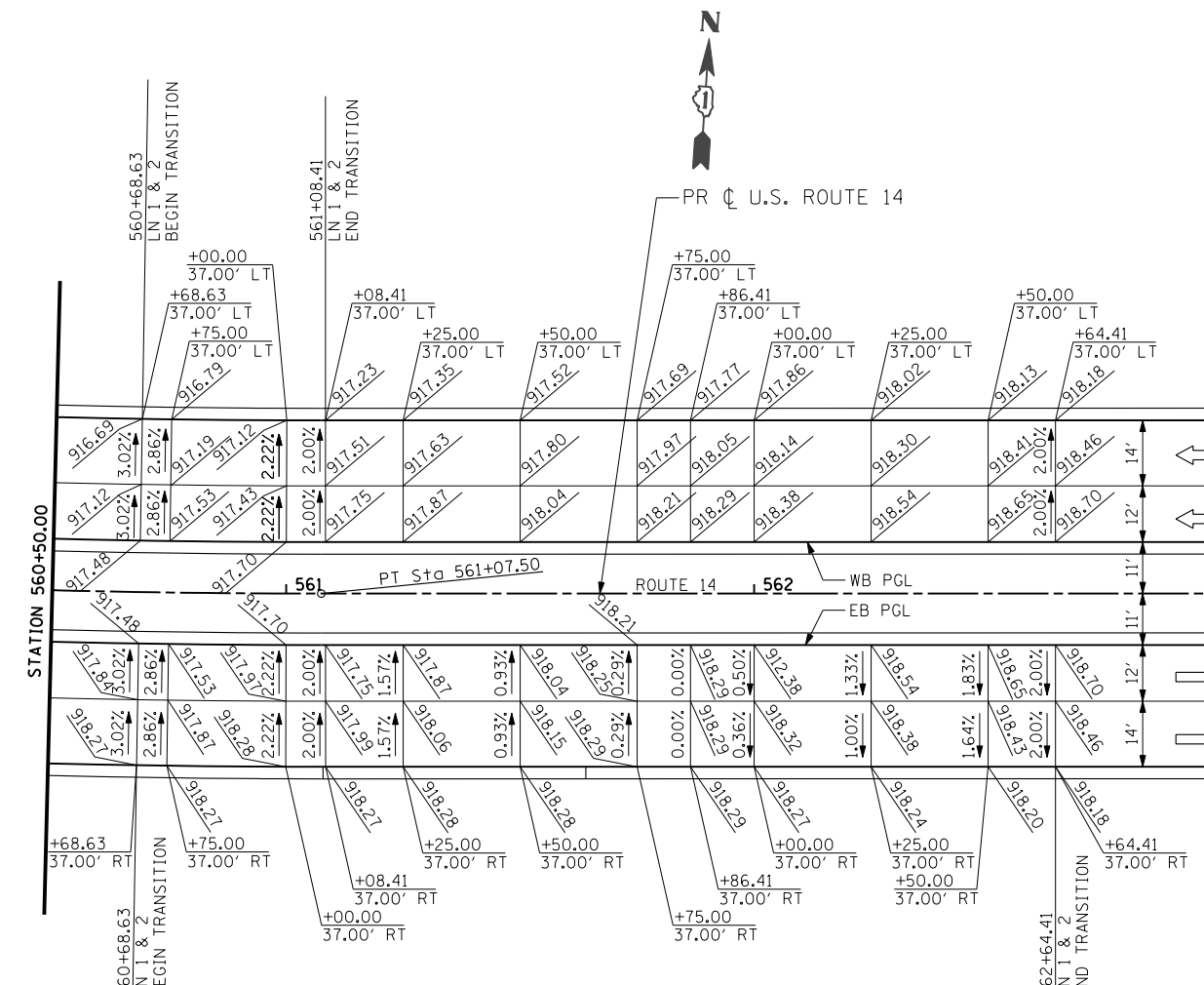
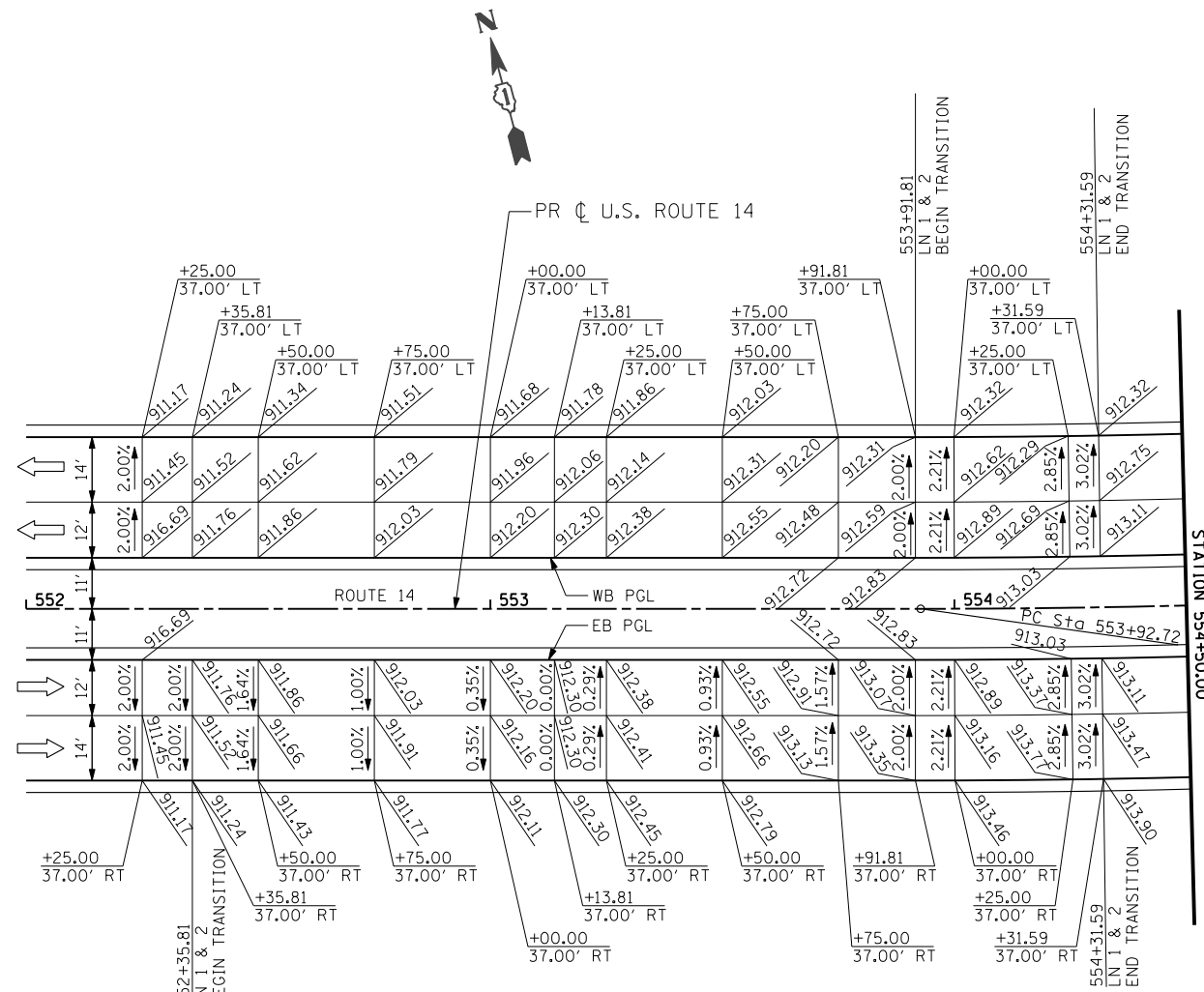


LEFT EOP ELEV.	LEFT EOP OFFSET	LANE 2 WIDTH	SLOPE LN 2 %	LANE 1 ELEV.	LANE 1 WIDTH	SLOPE LN 1 %	WB MEDIAN ELEV	WB MEDIAN OFFSET	WB MEDIAN SLOPE	SLOPE LEFT TURN	MEDIAN LEFT TURN	LEFT TURN EOP	STATION	CL/PGL ELEV.	LEFT TURN EOP	MEDIAN LEFT TURN	SLOPE LEFT TURN	EB MEDIAN SLOPE	EB MEDIAN OFFSET	EB MEDIAN ELEV.	SLOPE LN 1 %	LANE 1 WIDTH	LANE 1 ELEV	SLOPE LN 2 %	LANE 2 WIDTH	RIGHT EOP OFFSET	RIGHT EOP ELEV.
911.17	37.0' LT	14.0'	-2.00	911.45	12.0'	-2.00	911.69	11.0' LT	0.00				552+25.00	911.69				0.00	11.0' RT	911.69	-2.00	12.0'	911.45	-2.00	14.0'	37.0' RT	911.17
911.24	37.0' LT	14.0'	-2.00	911.52	12.0'	-2.00	911.76	11.0' LT	0.00				552+35.81	911.76				0.00	11.0' RT	911.76	-2.00	12.0'	911.52	-2.00	14.0'	37.0' RT	911.24
911.34	37.0' LT	14.0'	-2.00	911.62	12.0'	-2.00	911.86	11.0' LT	0.00				552+50.00	911.86				0.00	11.0' RT	911.86	-1.64	12.0'	911.66	-1.64	14.0'	37.0' RT	911.43
911.51	37.0' LT	14.0'	-2.00	911.79	12.0'	-2.00	912.03	11.0' LT	0.00				552+75.00	912.03				0.00	11.0' RT	912.03	-1.00	12.0'	911.91	-1.00	14.0'	37.0' RT	911.77
911.68	37.0' LT	14.0'	-2.00	911.96	12.0'	-2.00	912.20	11.0' LT	0.00				553+00.00	912.20				0.00	11.0' RT	912.20	-0.35	12.0'	912.16	-0.35	14.0'	37.0' RT	912.11
911.78	37.0' LT	14.0'	-2.00	912.06	12.0'	-2.00	912.30	11.0' LT	0.00				553+13.81	912.30				0.00	11.0' RT	912.30	0.00	12.0'	912.30	0.00	14.0'	37.0' RT	912.30
911.86	37.0' LT	14.0'	-2.00	912.14	12.0'	-2.00	912.38	11.0' LT	0.00				553+25.00	912.38				0.00	11.0' RT	912.38	0.29	12.0'	912.41	0.29	14.0'	37.0' RT	912.45
912.03	37.0' LT	14.0'	-2.00	912.31	12.0'	-2.00	912.55	11.0' LT	0.00				553+50.00	912.55				0.00	11.0' RT	912.55	0.93	12.0'	912.66	0.93	14.0'	37.0' RT	912.79
912.20	37.0' LT	14.0'	-2.00	912.48	12.0'	-2.00	912.72	11.0' LT	0.00				553+75.00	912.72				0.00	11.0' RT	912.72	1.57	12.0'	912.91	1.57	14.0'	37.0' RT	913.13
912.31	37.0' LT	14.0'	-2.00	912.59	12.0'	-2.00	912.83	11.0' LT	0.00				553+91.81	912.83				0.00	11.0' RT	912.83	2.00	12.0'	913.07	2.00	14.0'	37.0' RT	913.35
912.32	37.0' LT	14.0'	-2.21	912.62	12.0'	-2.21	912.89	11.0' LT	0.00				554+00.00	912.89				0.00	11.0' RT	912.89	2.21	12.0'	913.16	2.21	14.0'	37.0' RT	913.46
912.29	37.0' LT	14.0'	-2.85	912.69	12.0'	-2.85	913.03	11.0' LT	0.00				554+25.00	913.03				0.00	11.0' RT	913.03	2.85	12.0'	913.37	2.85	14.0'	37.0' RT	913.77
912.32	37.0' LT	14.0'	-3.02	912.75	12.0'	-3.02	913.11	11.0' LT	0.00				554+31.59	913.11				0.00	11.0' RT	913.11	3.02	12.0'	913.47	3.02	14.0'	37.0' RT	913.90
912.44	37.0' LT	14.0'	-3.02	912.87	12.0'	-3.02	913.23	11.0' LT	0.00				554+50.00	913.23				0.00	11.0' RT	913.23	3.02	12.0'	913.59	3.02	14.0'	37.0' RT	914.02
916.56	37.0' LT	14.0'	-3.02	916.99	12.0'	-3.02	917.35	11.0' LT	0.00				560+50.00	917.35				0.00	11.0' RT	917.35	3.02	12.0'	917.71	3.02	14.0'	37.0' RT	918.14
916.69	37.0' LT	14.0'	-3.02	917.12	12.0'	-3.02	917.48	11.0' LT	0.00				560+68.63	917.48				0.00	11.0' RT	917.48	3.02	12.0'	917.84	3.02	14.0'	37.0' RT	918.27
916.79	37.0' LT	14.0'	-2.86	917.19	12.0'	-2.86	917.53	11.0' LT	0.00				560+75.00	917.53				0.00	11.0' RT	917.53	2.86	12.0'	917.87	2.86	14.0'	37.0' RT	918.27
917.12	37.0' LT	14.0'	-2.22	917.43	12.0'	-2.22	917.70	11.0' LT	0.00				561+00.00	917.70				0.00	11.0' RT	917.70	2.22	12.0'	917.97	2.22	14.0'	37.0' RT	918.28
917.23	37.0' LT	14.0'	-2.00	917.51	12.0'	-2.00	917.75	11.0' LT	0.00				561+08.41	917.75				0.00	11.0' RT	917.75	2.00	12.0'	917.99	2.00	14.0'	37.0' RT	918.27
917.35	37.0' LT	14.0'	-2.00	917.63	12.0'	-2.00	917.87	11.0' LT	0.00				561+25.00	917.87				0.00	11.0' RT	917.87	1.57	12.0'	918.06	1.57	14.0'	37.0' RT	918.28
917.52	37.0' LT	14.0'	-2.00	917.80	12.0'	-2.00	918.04	11.0' LT	0.00				561+50.00	918.04				0.00	11.0' RT	918.04	0.93	12.0'	918.15	0.93	14.0'	37.0' RT	918.28
917.69	37.0' LT	14.0'	-2.00	917.97	12.0'	-2.00	918.21	11.0' LT	0.00				561+75.00	918.21				0.00	11.0' RT	918.21	0.29	12.0'	918.25	0.29	14.0'	37.0' RT	918.29
917.77	37.0' LT	14.0'	-2.00	918.05	12.0'	-2.00	918.29	11.0' LT	0.00				561+86.41	918.29				0.00	11.0' RT	918.29	0.00	12.0'	918.29	0.00	14.0'	37.0' RT	918.29
917.86	37.0' LT	14.0'	-2.00	918.14	12.0'	-2.00	918.38	11.0' LT	0.00				562+00.00	918.38				0.00	11.0' RT	918.38	-0.50	12.0'	918.32	-0.36	14.0'	37.0' RT	918.27
918.02	37.0' LT	14.0'	-2.00	918.30	12.0'	-2.00	918.54	11.0' LT	0.00				562+25.00	918.54				0.00	11.0' RT	918.54	-1.33	12.0'	918.38	-1.00	14.0'	37.0' RT	918.24
918.13	37.0' LT	14.0'	-2.00	918.41	12.0'	-2.00	918.65	11.0' LT	0.00				562+50.00	918.65				0.00	11.0' RT	918.65	-1.83	12.0'	918.43	-1.64	14.0'	37.0' RT	918.20
918.18	37.0' LT	14.0'	-2.00	918.46	12.0'	-2.00	918.70	11.0' LT	0.00				562+64.41	918.70				0.00	11.0' RT	918.70	-2.00	12.0'	918.46	-2.00	14.0'	37.0' RT	918.18
918.20	37.0' LT	14.0'	-2.00	918.48	12.0'	-2.00	918.72	11.0' LT	0.00				562+75.00	918.72				0.00	11.0' RT	918.72	-2.00	12.0'	918.48	-2.00	14.0'	37.0' RT	918.20



FILE NAME =	USER NAME = .USERNAME	DESIGNED - CGC	REVISED -	STATE OF ILLINOIS DEPARTMENT OF TRANSPORTATION	U.S. ROUTE 14 SUPERELEVATION TRANSITION PAVEMENT PLAN		F.A.P. RTE. 305	SECTION 27R-3	COUNTY MCHENRY	TOTAL SHEETS 431	SHEET NO. 220
S:\1606\CADD Sheets\0162517-sht-SEdetail.dgn	PLOT SCALE = 40.0000' / IN.	CHECKED - MGZ	REVISED -		SCALE: 1"=20'	SHEET NO. 220 OF 431 SHEETS	STA.	ILLINOIS FED. AID PROJECT		CONTRACT NO. 62517	
	PLOT DATE = 10/9/2013	DATE - 10/15/2013	REVISED -		TO STA.						