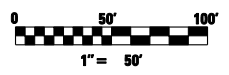
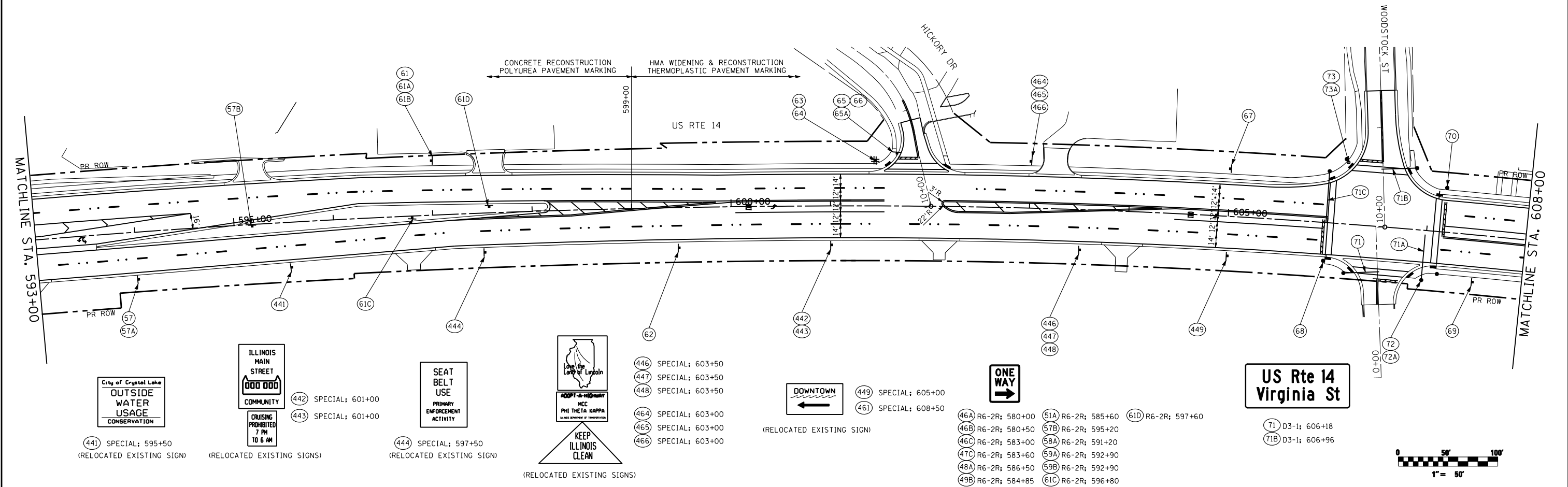


NOTE:  
ILLUMINATED STREET NAME SIGN - SEE SHEET 321 FOR DETAILS



FILE NAME =	USER NAME = .USERNAME.	DESIGNED - JPW	REVISED -
S:\1606\CADD Sheets\0162517-sht-signing.dgn		DRAWN - JPW	REVISED -
		CHECKED - MGZ	REVISED -
		DATE - 10/15/2013	REVISED -

**STATE OF ILLINOIS  
DEPARTMENT OF TRANSPORTATION**

<b>SIGNING PLAN US ROUTE 14</b>		
SCALE: 1"=50'	SHEET NO. 232 OF 431 SHEETS	STA. 578+00.00 TO STA. 608+00.00

F.A.P. RTE.	SECTION	COUNTY	TOTAL SHEETS	SHEET NO.
305	27R-3	MCHENRY	431	232
CONTRACT NO. 62517			ILLINOIS FED. AID PROJECT	