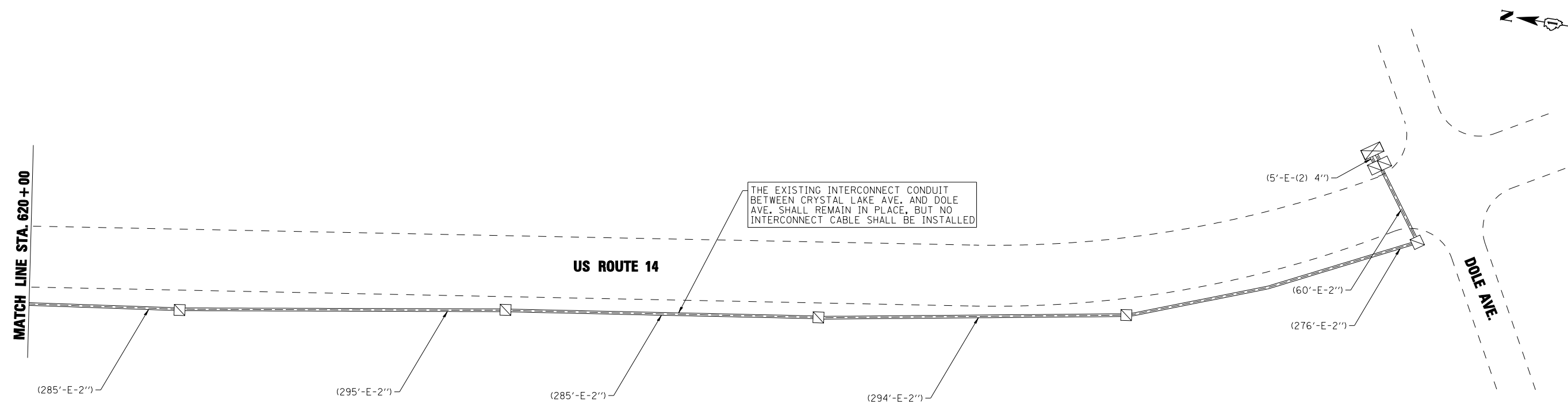
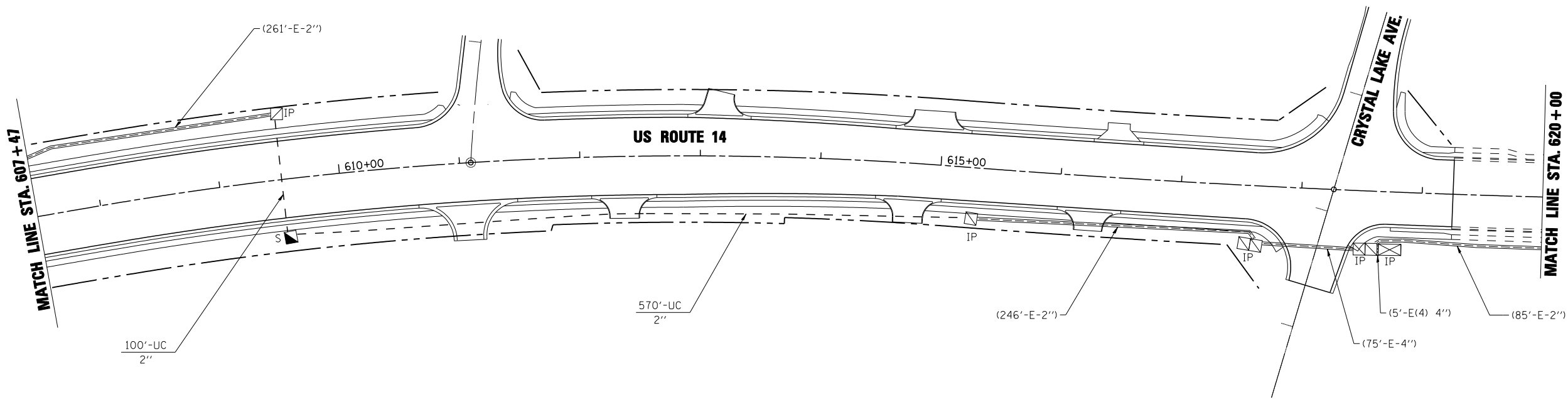


**EJM ENGINEERING, INC.**  
 411 South Wells Street Suite 1000  
 Chicago, Illinois 60607



FILE NAME =  
 ...\\D162517-SHT-1C05.dgn

USER NAME = rswanson  
 PLOT SCALE = 20:1  
 PLOT DATE = 10/8/2013

DESIGNED - GR  
 DRAWN - GR  
 CHECKED - RS  
 DATE - 10/15/2013

REVISED -  
 REVISED -  
 REVISED -  
 REVISED -

**STATE OF ILLINOIS  
 DEPARTMENT OF TRANSPORTATION**

**US RTE. 14  
 TRAFFIC SIGNAL INTERCONNECT PLAN**  
 SCALE: 50:1 SHEET NO. 5 OF 5 SHEETS STA. 607+47 TO STA.

| F.A.P. RTE.                                     | SECTION | COUNTY  | TOTAL SHEETS       | SHEET NO. |
|---|---------|---------|--------------------|-----------|
| 305   | 27R-3   | MCHENRY | 431                | 318       |
| FED. ROAD DIST. NO. 1 ILLINOIS FED. AID PROJECT |         |         | CONTRACT NO. 62517 |           |