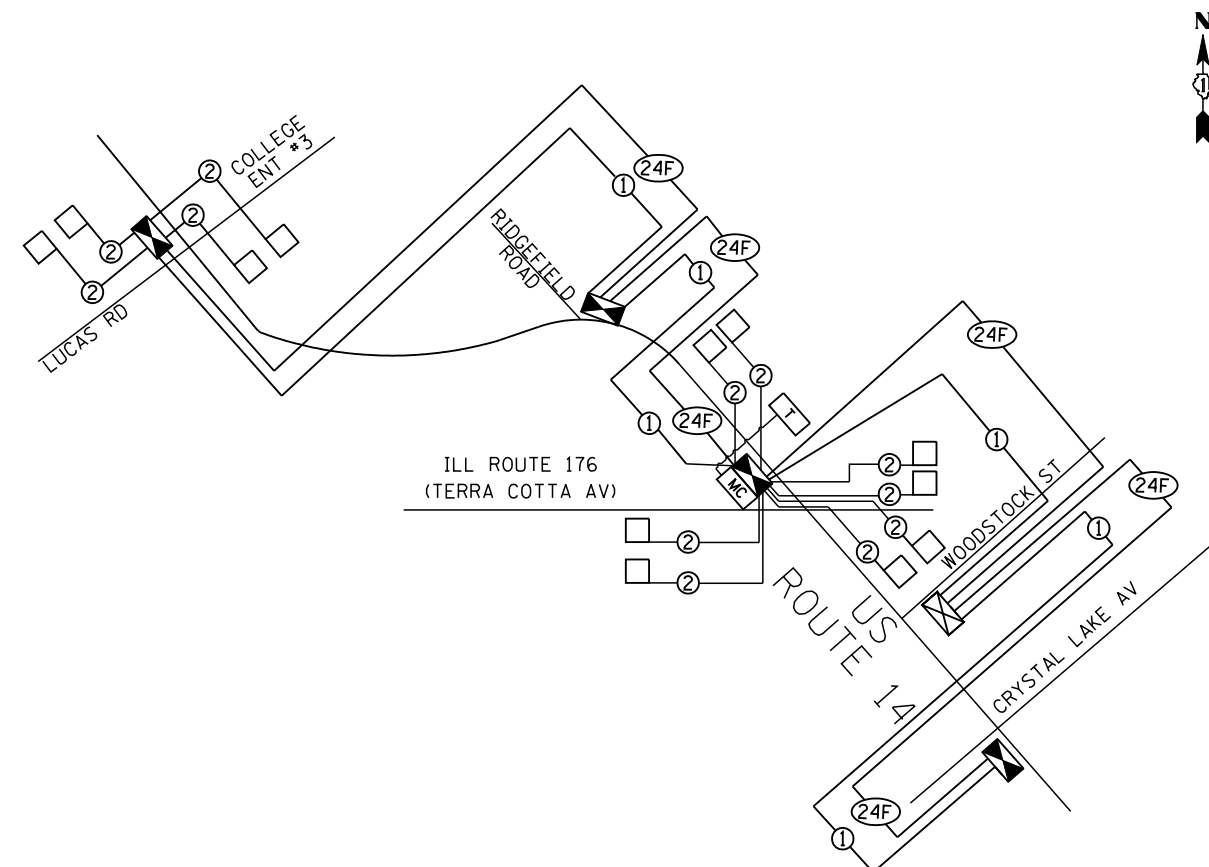


SCHEDULE OF QUANTITIES

ITEM	UNIT	QUANTITY
UNDERGROUND CONDUIT, GALVANIZED STEEL, 2" DIA.	FOOT	9965
HANDHOLE	EA	15
REMOVE ELECTRIC CABLE FROM CONDUIT	FOOT	300
OPTIMIZE TRAFFIC SIGNAL SYSTEM	EA	1
FIBER OPTIC CABLE IN CONDUIT, NO. 62.5/125, MM12F SM12F	FOOT	12473
ELECTRIC CABLE IN CONDUIT, TRACER, NO. 14 1C	FOOT	12473



TRAFFIC SIGNAL SYSTEM INTERCONNECT SCHEMATIC

EJM ENGINEERING, INC.
411 South Wells Street Suite 1000
Chicago, Illinois 60607



FILE NAME = ...\\D162517-SHT-IC-SCHEMATIC.dgn	USER NAME = rswanson	DESIGNED - GR	REVISED -
		DRAWN - GR	REVISED -
		CHECKED - RS	REVISED -
		DATE - 10/15/2013	REVISED -

STATE OF ILLINOIS
DEPARTMENT OF TRANSPORTATION

US RTE. 14	
TRAFFIC SIGNAL INTERCONNECT SCHEMATIC	
SCALE: NONE	SHEET NO. 1 OF 1 SHEETS
STA.	TO STA.

F.A.P. RTE.	SECTION	COUNTY	TOTAL SHEETS	SHEET NO.
305	27R-3	MCHENRY	431	319
FED. ROAD DIST. NO. 1 ILLINOIS FED. AID PROJECT			CONTRACT NO. 62517	