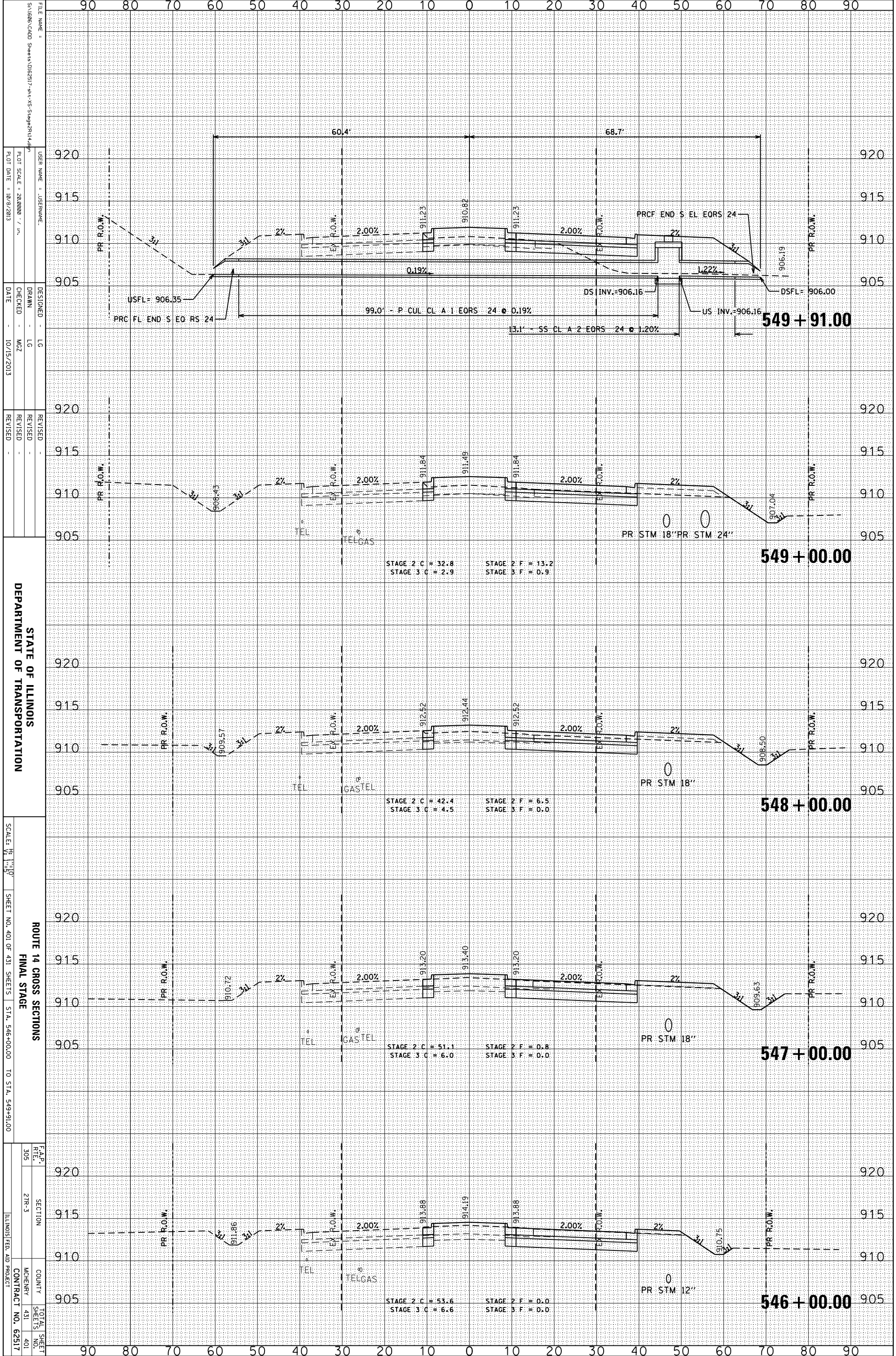


| | | | |
|-----------------|----------|----|------|
| ORIGINAL SURVEY | SURVEYED | BY | DATE |
| NOTE BOOK | PLOTTED | | |
| | TEMPLATE | | |
| | AREAS | | |
| | CHECKED | | |

| | | | |
|--------------|----------|----|------|
| FINAL SURVEY | SURVEYED | BY | DATE |
| NOTE BOOK | PLOTTED | | |
| | TEMPLATE | | |
| | AREAS | | |
| | CHECKED | | |



FILE NAME = S:\1606\CADD Sheets\062517-rt-v3-Stage2\RT1.dgn
 USER NAME = JUSEPHNAME
 DESIGNER = LG
 DRAWN = LG
 CHECKED = MZ
 DATE = 10/15/2013

REVISIONS
 REVISION
 REVISION
 REVISION

STATE OF ILLINOIS
 DEPARTMENT OF TRANSPORTATION

ROUTE 14 CROSS SECTIONS
 FINAL STAGE
 SCALE: 1" = 10'
 SHEET NO. 401 OF 431 SHEETS STA. 546+00.00 TO STA. 549+91.00

| | | | |
|--------------------|---------|---------------------------|--------------|
| F.A.P. R.T.E. | SECTION | COUNTY | TOTAL SHEETS |
| 305 | 21R-3 | MCHEMERY | 401 |
| CONTRACT NO. 62517 | | ILLINOIS FED. AID PROJECT | |