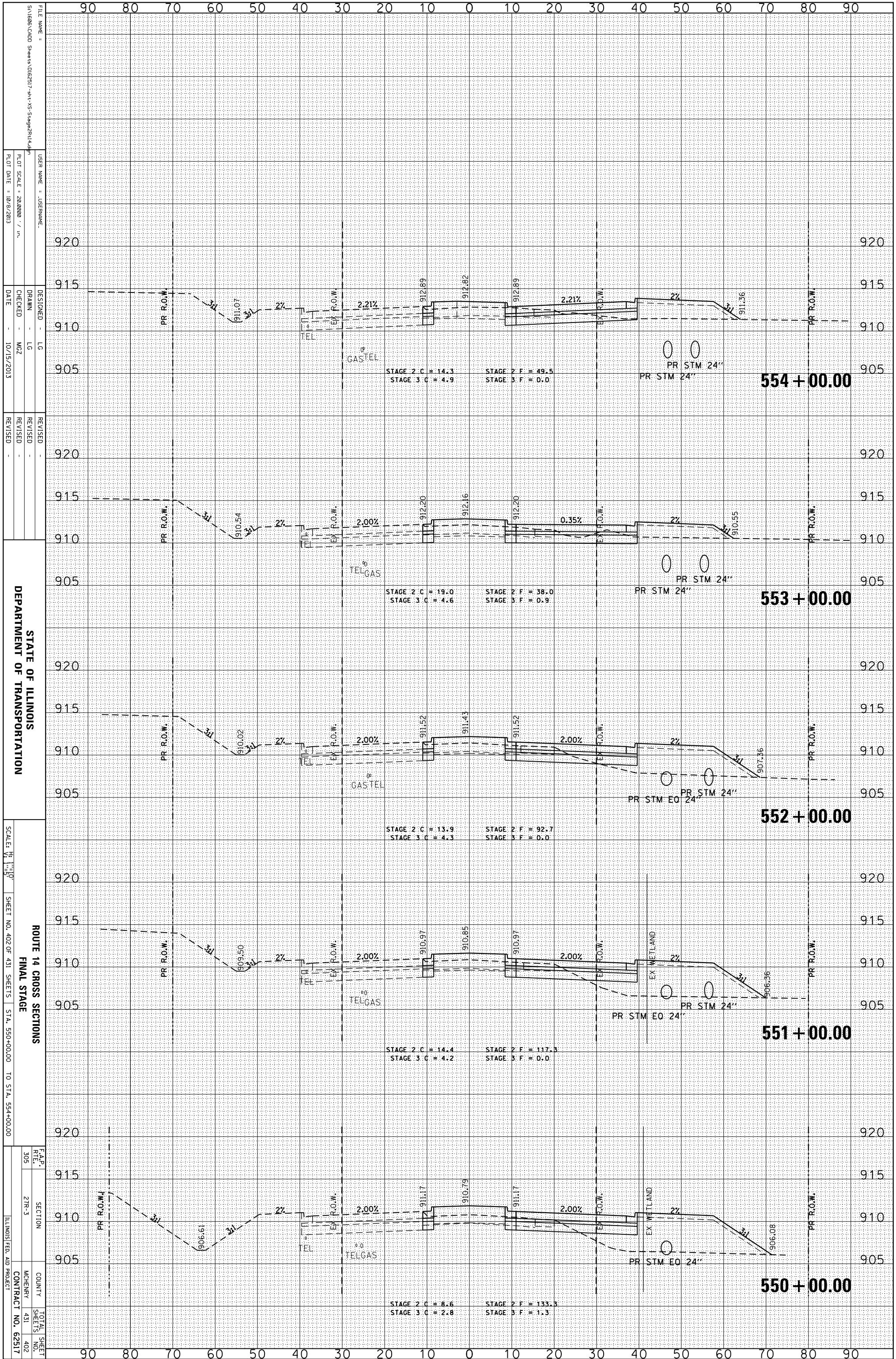


ORIGINAL SURVEY	SURVEYED	BY	DATE
NOTE BOOK	PLOTTED		
	TEMPLATE		
	AREAS		
	CHECKED		

FINAL SURVEY	SURVEYED	BY	DATE
NOTE BOOK	PLOTTED		
	TEMPLATE		
	AREAS		
	CHECKED		



STATE OF ILLINOIS  
DEPARTMENT OF TRANSPORTATION

ROUTE 14 CROSS SECTIONS  
FINAL STAGE  
SHEET NO. 402 OF 431 SHEETS STA. 550+00.00 TO STA. 554+00.00

F.A.P. R.T.L.	SECTION	COUNTY	TOTAL SHEETS
305	27R-3	MCHEMERY	402
ILLINOIS FED. AID PROJECT			CONTRACT NO. 62517

FILE NAME =	USER NAME =	DESIGNED -	REVISIONS
5\1606\CADD Sheets\062517-14\14-550-554\27R-3.dwg	JOSPHNAME	LG	
		DRAWN -	REVISIONS
		LG	
		CHECKED -	REVISIONS
		MZ	
		DATE -	REVISIONS
		10/15/2013	

SCALE =	DATE
28,000 / 1" = 100'	10/9/2013