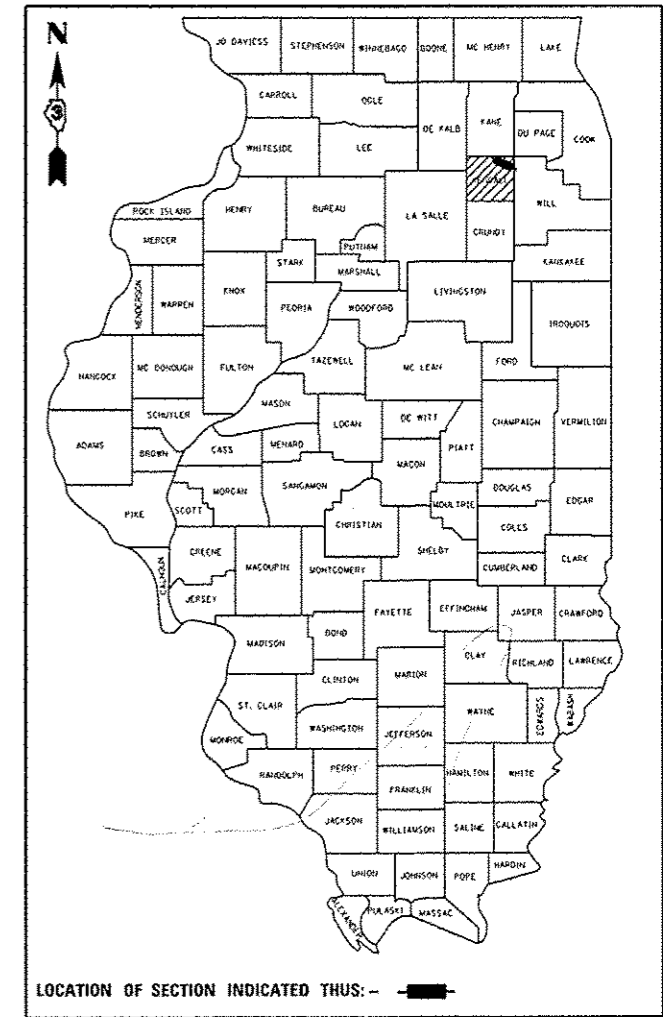


STATE OF ILLINOIS
DEPARTMENT OF TRANSPORTATION
DIVISION OF HIGHWAYS
PROPOSED
HIGHWAY PLANS

F.A.U. RTE.	SECTION	COUNTY	TOTAL SHEETS	SHEET NO.
379	118RS-3	KENDALL	19	1
		ILLINOIS	CONTRACT NO. 66473	

D-93-061-04



MINOR ARTERIAL (URBAN)
2013 ADT = 6250
PV = 90.9% SU = 5.6% MU = 3.5%

STATE OF ILLINOIS
 DEPARTMENT OF TRANSPORTATION
 DIVISION OF HIGHWAYS

SUBMITTED June 6, 2014
Paul Loete, P.E.
 DEPUTY DIRECTOR OF HIGHWAYS, REGION ENGINEER

June 27, 2014
John D. Baranzelli, P.E.
 ENGINEER OF DESIGN AND ENVIRONMENT

June 27, 2014
Omer Osman, P.E.
 DIRECTOR OF HIGHWAYS, CHIEF ENGINEER

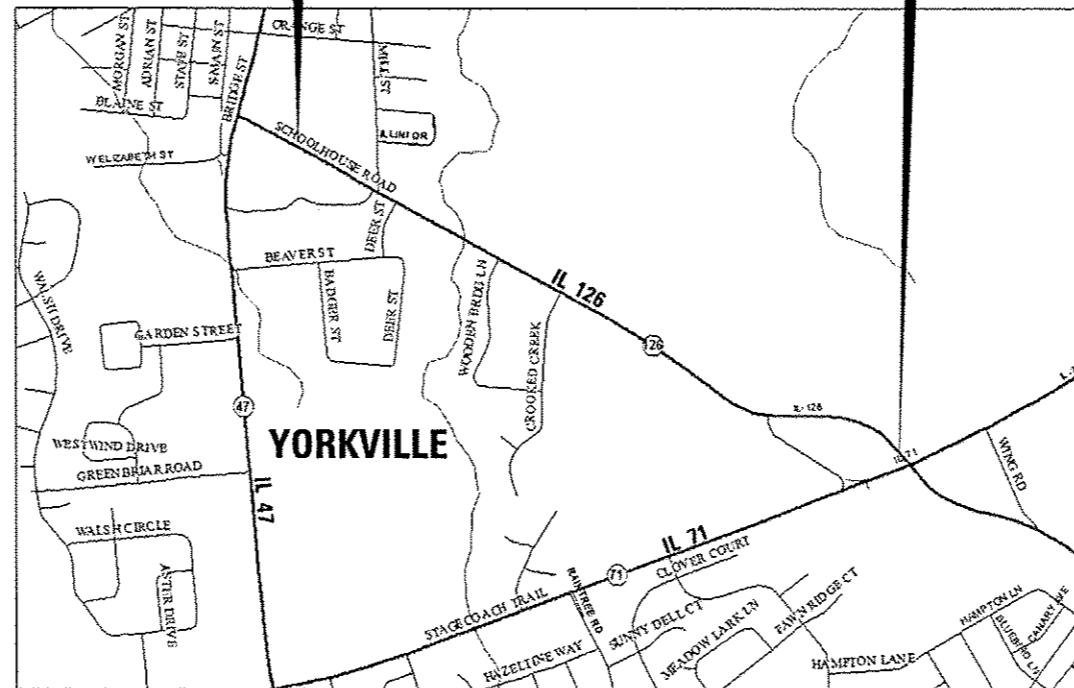
FAU ROUTE 379 (IL 126)
SECTION 118RS-3

3P MILLING & RESURFACING
KENDALL COUNTY

C-93-117-04

BEGIN IMPROVEMENT
STA. 11 + 74

END IMPROVEMENT
STA. 78 + 56



GROSS & NET LENGTH = 6682 FT. = 1.27 MILES

INDEX OF SHEETS

- 1 COVER SHEET
- 2 GENERAL NOTES
- 3 - 5 SUMMARY OF QUANTITIES
- 6 - 7 TYPICAL SECTIONS
- 8 - 9 SCHEDULE OF QUANTITIES
- 10 - 16 PLAN VIEWS
- 17 - 19 DETAILS

LIST OF ILLINOIS DOT HIGHWAY STANDARDS

- 000001-06 STANDARD SYMBOLS, ABBREVIATIONS AND PATTERNS
- 424001-07 PERPENDICULAR CURB RAMPS FOR SIDEWALKS
- 606001-05 CONCRETE CURB TYPE B AND COMBINATION CONCRETE CURB AND GUTTER
- 667101-02 PERMANENT SURVEY MARKERS
- 701001-02 OFF-ROAD OPERATIONS 2L, 2W, MORE THAN 15' (4.5 m) AWAY
- 701006-05 OFF-ROAD OPERATIONS 2L, 2W, 15' (4.5 m) TO 24" (600 mm) FROM PAVEMENT EDGE
- 701011-04 OFF-ROAD MOVING OPERATIONS 2L, 2W, DAY ONLY
- 701301-04 LANE CLOSURE, 2L, 2W, SHORT TIME OPERATIONS
- 701306-03 LANE CLOSURE, 2L, 2W, SLOW MOVING OPERATIONS DAY ONLY, FOR SPEEDS ≥ 45 MPH
- 701311-03 LANE CLOSURE, 2L, 2W, MOVING OPERATIONS - DAY ONLY
- 701901-03 TRAFFIC CONTROL DEVICES
- 781001-03 TYPICAL APPLICATIONS RAISED REFLECTIVE PAVEMENT MARKERS
- 886001-01 DETECTOR LOOP INSTALLATIONS
- 886006-01 TYPICAL LAYOUT FOR DETECTION LOOPS

MICROFILMED
 REEL NUMBER
 AWARDED
 RESIDENT ENGINEER
 AS BUILT CHANGES WERE MADE
 ON THE FOLLOWING SHEETS



FULL SIZE PLANS HAVE BEEN PREPARED USING STANDARD ENGINEERING SCALES. REDUCED SIZED PLANS WILL NOT CONFORM TO STANDARD SCALES. IN MAKING MEASUREMENTS ON REDUCED PLANS, THE ABOVE SCALES MAY BE USED.

J.U.L.I.E.
 JOINT UTILITY LOCATION INFORMATION FOR EXCAVATION
 1-800-892-0123
 OR 811

PROJECT ENGINEER: CRAIG REED, P.E.
UNIT CHIEF: BRAD DUNCAN, P.E.
 DISTRICT 3 NO. (815) 434-6131
 CONTRACT NO. 66473

PRINTED BY THE AUTHORITY
OF THE STATE OF ILLINOIS

GENERAL NOTES

THE THICKNESS OF HMA SHOWN ON THE PLANS IS THE NOMINAL THICKNESS. DEVIATIONS FROM THE NOMINAL THICKNESS WILL BE PERMITTED WHEN SUCH DEVIATIONS OCCUR DUE TO IRREGULARITIES IN THE EXISTING SURFACE OR BASE ON WHICH THE HMA IS PLACED.

THE HMA SURFACE OF ALL MAILBOX TURNOUTS, PRIVATE ENTRANCES, COMMERCIAL ENTRANCES, AND SIDE ROADS SHALL BE MADE NEATLY, IN A WORKMANLIKE MANNER, AND SHALL ACCURATELY CONFORM TO THE SHAPES AND DIMENSIONS SHOWN ON THE PLAN DETAILS. IF REQUIRED BY THE ENGINEER, THE CONTRACTOR SHALL SAW CUT THE HMA SURFACE TO CONFORM TO THE SHAPES AND DIMENSIONS SHOWN ON THE PLAN DETAILS. THIS WORK WILL BE INCLUDED IN THE COST OF THE HMA SURFACE.

THE ENGINEER WILL BE THE SOLE JUDGE CONCERNING CURING TIME FOR THE VARIOUS HMA LIFTS.

ALL EXCAVATED MATERIAL, WHICH INCLUDES DIGGING OR GRADING OF ANY SOIL OR FILL MATERIAL, WITH THE EXCEPTION OF AGGREGATE FILLS, MUST BE INCORPORATED WITHIN THE IDOT RIGHT OF WAY DUE TO ENVIRONMENTAL DOCUMENTATION REQUIREMENTS.

DETECTABLE WARNING SURFACES SHALL EXTEND 2.0 FT MINIMUM IN THE DIRECTION OF PEDESTRIAN TRAVEL. AT CURB RAMPS AND BLENDED TRANSITIONS, DETECTABLE WARNING SURFACES SHALL EXTEND THE FULL WIDTH OF THE RAMP RUN (EXCLUDING ANY FLARES) OR BLENDED TRANSITIONS. SOME DETECTABLE WARNING PRODUCTS REQUIRE A CONCRETE BORDER FOR PROPER INSTALLATION. THE CONCRETE BORDER SHALL NOT EXCEED 2 INCHES.

ON EXISTING PAVEMENT WHICH MAY BE SUPERELEVATED, THE NEW HMA PAVEMENT SHALL BE BUILT WITH THE SAME SUPERELEVATION UNLESS NEW SUPERELEVATION RATES ARE GIVEN ON THE PLANS.

ANY REFERENCE TO A STANDARD IN THESE PLANS SHALL BE INTERPRETED TO MEAN THE EDITION AS INDICATED BY THE SUBNUMBER SHOWN IN THE LIST OF STANDARDS OR THE COPY INCLUDED IN THESE PLANS.

THE FOLLOWING RATES OF APPLICATION HAVE BEEN USED IN CALCULATING PLAN QUANTITIES:

GRANULAR MATERIALS	2.05	TONS / CU YD
HMA RESURFACING	112	LBS / SQ YD / IN
SHORT TERM PAVEMENT MARKING	10	FT /100 FT OF APPLICATION
MIX FOR CRACKS, JTS & FLGWYS	0.0003	TONS / SQ YD
LEVEL BINDER (HAND METHOD)	0.0005	TONS / SQ YD
SUPPLEMENTAL WATERING	3	GAL / SQ YD / APPLICATION

THE CONTRACTOR SHALL CONTACT JULIE AT LEAST 48 HOURS PRIOR TO EXCAVATION TO DETERMINE WHICH UTILITIES ARE IN THE AREA.

CONTACT THE BUREAU OF OPERATIONS TRAFFIC SIGNAL SECTION FOR INFORMATION PERTAINING TO THE LOCATION AND INSTALLATION OF DETECTOR LOOPS

STATE OF ILLINOIS
DEPARTMENT OF TRANSPORTATION
DISTRICT THREE

PREPARED BY: *Don Beomil*
DISTRICT STUDIES & PLANS ENGINEER

DATE: 6-6-14

EXAMINED BY: *Deborah J...*
DISTRICT CONSTRUCTION ENGINEER
Wayne L. Phillips
DISTRICT MATERIALS ENGINEER

James O. Huske
DISTRICT OPERATIONS ENGINEER

FILE NAME *	USER NAME * duncanbd	DESIGNED -	REVISED -	STATE OF ILLINOIS DEPARTMENT OF TRANSPORTATION	GENERAL NOTES			F.A.U. RTE.	SECTION	COUNTY	TOTAL SHEETS	SHEET NO.
c:\pwwork\p1dat\duncanbd\dms04419\ED001041.sht-cover.dgn		DRAWN -	REVISED -					379	118RS-3	KENDALL	19	2
PLOT SCALE * 100.0000 / 1 in.		CHECKED -	REVISED -		SCALE: SHEET OF SHEETS STA. TO STA.			ILLINOIS FED. AID PROJECT				
PLOT DATE * 6/4/2014		DATE -	REVISED -		CONTRACT NO. 66473							

CODE NO.	ITEM	UNIT	TOTAL QUANTITY	CONSTR. CODE
				100% STATE ROADWAY
				0005 URBAN
25200110	SODDING, SALT TOLERANT	SQ YD	24	24
25200200	SUPPLEMENTAL WATERING	UNIT	1	1
40600400	MIXTURE FOR CRACKS, JOINTS, AND FLANGEWAYS	TON	7	7
40600537	LEVELING BINDER (HAND METHOD), IL-9.5FG, N70	TON	11	11
40600637	LEVELING BINDER (MACHINE METHOD), IL-9.5FG, N70	TON	999	999
40600990	TEMPORARY RAMP	SQ YD	234	234
40603340	HOT-MIX ASPHALT SURFACE COURSE, MIX "D", N70	TON	1999	1999
40800050	INCIDENTAL HOT-MIX ASPHALT SURFACING	TON	195	195
42400100	PORTLAND CEMENT CONCRETE SIDEWALK 4 INCH	SQ FT	225	225
42400800	DETECTABLE WARNINGS	SQ FT	36	36
44000158	HOT-MIX ASPHALT SURFACE REMOVAL, 2 1/4"	SQ YD	25340	25340
44000500	COMBINATION CURB AND GUTTER REMOVAL	FOOT	35	35
44000600	SIDEWALK REMOVAL	SQ FT	225	225
48102100	AGGREGATE WEDGE SHOULDER, TYPE B	TON	243	243

△ SPECIALTY ITEMS

FILE NAME :	USER NAME : duncanbd	DESIGNED -	REVISED -	STATE OF ILLINOIS DEPARTMENT OF TRANSPORTATION	SUMMARY OF QUANTITIES				F.A.U. RTE.	SECTION	COUNTY	TOTAL SHEETS	SHEET NO.
o:\p\work\p1dot\duncanbd\dms24419\ED0	1104-sh1-500.dgn	DRAWN -	REVISED -		379	118RS-3	KENDALL	19	3				
	PLOT SCALE * 100.0000 ' / in.	CHECKED -	REVISED -						CONTRACT NO. 66473				
	PLOT DATE * 6/4/2014	DATE -	REVISED -		SCALE:	SHEET NO.	OF SHEETS	STA.	TO STA.	ILLINOIS FED. AID PROJECT			

CODE NO.	ITEM	UNIT	TOTAL QUANTITY	CONSTR. CODE	
				100% STATE ROADWAY	
				0005	URBAN
60603800	COMBINATION CONCRETE CURB AND GUTTER, TYPE B-6.12	FOOT	35	35	
66700205	PERMANENT SURVEY MARKERS, TYPE I	EACH	1	1	
67100100	MOBILIZATION	L SUM	1	1	
70100460	TRAFFIC CONTROL AND PROTECTION, STANDARD 701306	L SUM	1	1	
70300100	SHORT TERM PAVEMENT MARKING	FOOT	3833	3833	
70300210	TEMPORARY PAVEMENT MARKING LETTERS AND SYMBOLS	SO FT	124.8	124.8	
70300220	TEMPORARY PAVEMENT MARKING - LINE 4"	FOOT	23132	23132	
70300240	TEMPORARY PAVEMENT MARKING - LINE 6"	FOOT	1796	1796	
70300250	TEMPORARY PAVEMENT MARKING - LINE 8"	FOOT	932	932	
70300260	TEMPORARY PAVEMENT MARKING - LINE 12"	FOOT	890	890	
70301000	WORK ZONE PAVEMENT MARKING REMOVAL	SO FT	1265	1265	
△ 78008200	POLYUREA PAVEMENT MARKING TYPE I - LETTERS AND SYMBOLS	SO FT	124.8	124.8	
△ 78008210	POLYUREA PAVEMENT MARKING TYPE I - LINE 4"	FOOT	24406	24406	
△ 78008230	POLYUREA PAVEMENT MARKING TYPE I - LINE 6"	FOOT	826	826	

△ SPECIALTY ITEMS

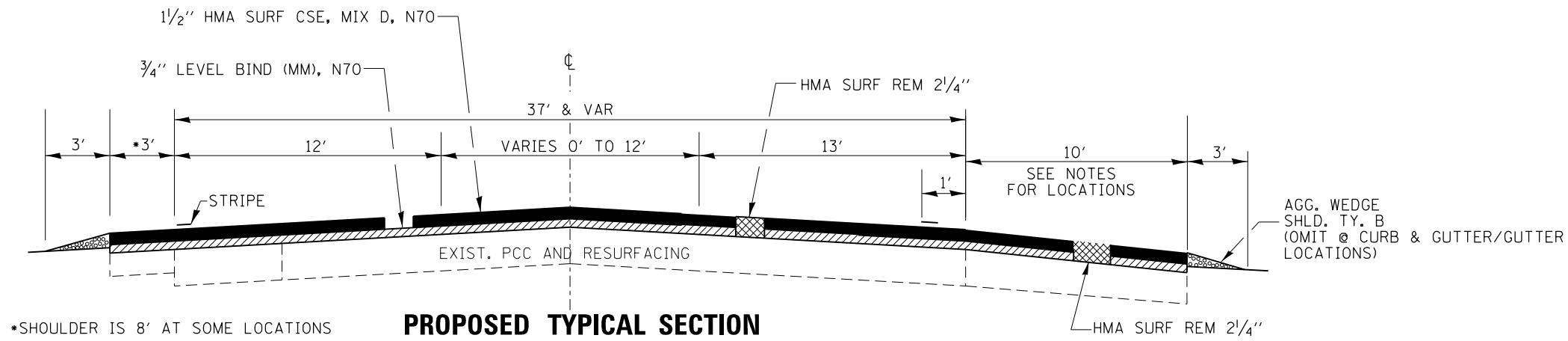
FILE NAME =	USER NAME = duncanbd	DESIGNED -	REVISED -	STATE OF ILLINOIS DEPARTMENT OF TRANSPORTATION	SUMMARY OF QUANTITIES				F.A.U. RATE.	SECTION	COUNTY	TOTAL SHEETS	SHEET NO.
c:\pwork\pwork\duncanbd\dms84419\ED08104-ht-500.dgn		DRAWN -	REVISED -		379	118RS-3	KENDALL	19	4				
PLOT SCALE = 100.0000' / in.		CHECKED -	REVISED -		SCALE: SHEET OF SHEETS STA. TO STA.				CONTRACT NO. 66473				
PLOT DATE = 6/4/2014		DATE -	REVISED -		ILLINOIS FED. AID PROJECT								

008 01 Vol.

CODE NO.	ITEM	UNIT	TOTAL QUANTITY	CONSTR. CODE	
				100% STATE ROADWAY	0005 URBAN
△ 78008240	POLYUREA PAVEMENT MARKING TYPE I - LINE 8"	FOOT	614	614	
△ 78008250	POLYUREA PAVEMENT MARKING TYPE I - LINE 12"	FOOT	557	557	
△ 78008270	POLYUREA PAVEMENT MARKING TYPE I - LINE 24"	FOOT	59	59	
△ 78100100	RAISED REFLECTIVE PAVEMENT MARKER	EACH	160	160	
	78300200	RAISED REFLECTIVE PAVEMENT MARKER REMOVAL	EACH	160	160
△ 88600100	DETECTOR LOOP, TYPE I	FOOT	30	30	
	X4060110	BITUMINOUS MATERIALS (PRIME COAT)	POUND	16350	16350
△ X8860100	LOOP DETECTOR TESTING	EACH	1	1	
	Z0030850	TEMPORARY INFORMATION SIGNING	SO FT	42	42
	Z0034105	MATERIAL TRANSFER DEVICE	TON	1999	1999

△ SPECIALTY ITEMS

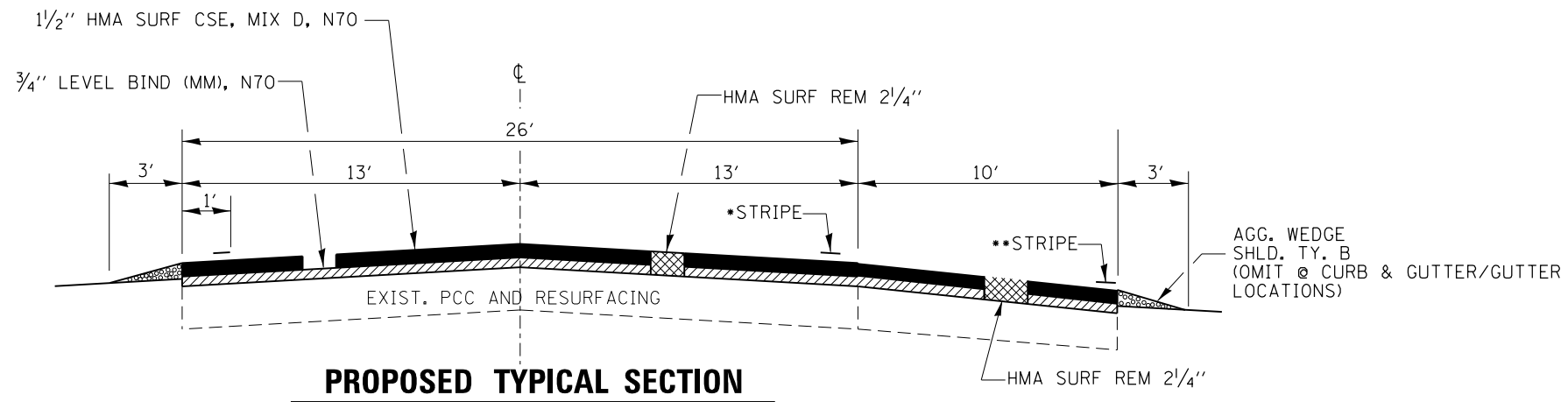
FILE NAME #	USER NAME # dunaebd	DESIGNED -	REVISED -	STATE OF ILLINOIS DEPARTMENT OF TRANSPORTATION	SUMMARY OF QUANTITIES				F.A.M. RATE:	SECTION	COUNTY	TOTAL SHEETS	SHEET NO.
c:\pwork\psidat\dunaebd\dms04419\ED05104-sh1-500.dgn		DRAWN -	REVISED -		379	118RS-3	KENDALL	19	5				
PLOT SCALE = 100.0000' / 1" =		CHECKED -	REVISED -						CONTRACT NO. 66473				
PLOT DATE = 6/4/2014		DATE -	REVISED -		SCALE:	SHEET	OF	SHEETS	STA.	TO	STA.	ILLINOIS FED. AID PROJECT	



*SHOULDER IS 8' AT SOME LOCATIONS

PROPOSED TYPICAL SECTION

STA. 11+74 - STA. 20+29
 NOTES:
 STA. 11+74 - STA. 12+17
 STA. 14+43 - STA. 16+07
 STA. 18+43 - STA. 20+29



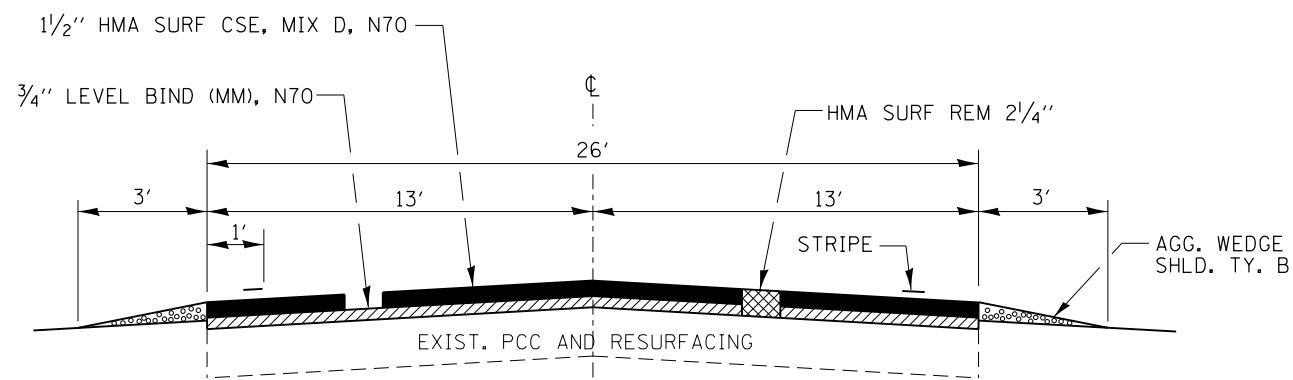
PROPOSED TYPICAL SECTION

	*	**
STA. 20+29 - STA. 29+39	4"	N/A
STA. 32+50 - STA. 35+48	8"	4"
STA. 39+24 - STA. 42+50	8"	4"

MIXTURE TABLE

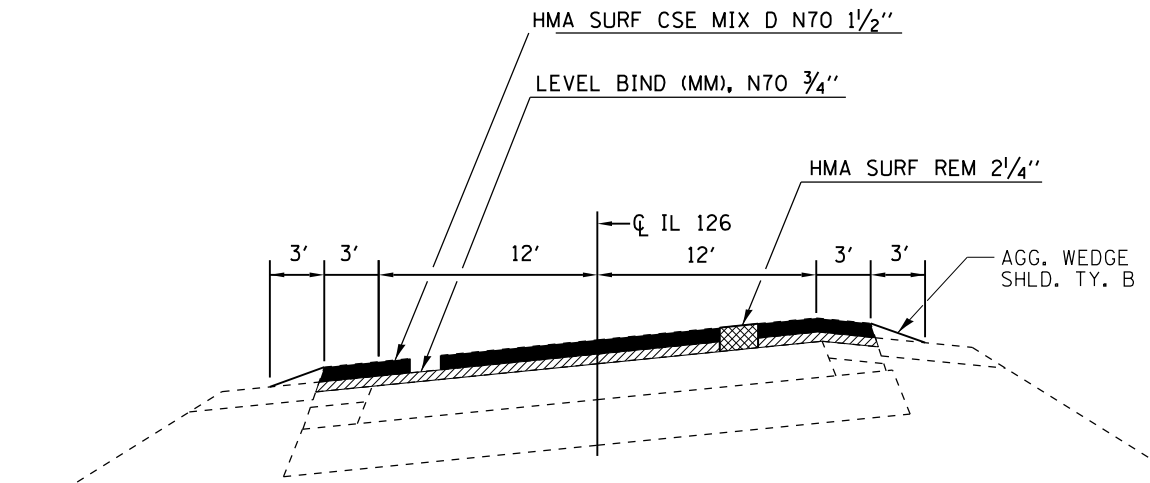
	HMA SURFACE	INCIDENTAL HMA SURFACE	LEVEL BINDER
PG GRADE**	PG 64-22	PG 64-22	PG 64-22
DESIGN AIR VOIDS	4.0% @ N70	4.0% @ N50	4.0% @ N70
MIXTURE COMPOSITION	IL 9.5	IL 9.5	IL 9.5 FG
FRICTION AGGREGATE	MIXTURE D	MIXTURE C	
DENSITY CONTROL METHOD	CORRELATION	SATISFACTION OF ENGINEER	CORRELATION

** WHEN RAP/RAS ABR EXCEEDS 20 PERCENT, THE HIGH AND LOW VIRGIN ASPHALT BINDER GRADES SHALL EACH BE REDUCED BY ONE GRADE (I.E. 25% ABR WOULD REQUIRE A VIRGIN ASPHALT BINDER GRADE OF PG 64-22 TO BE REDUCED TO PG 58-28)



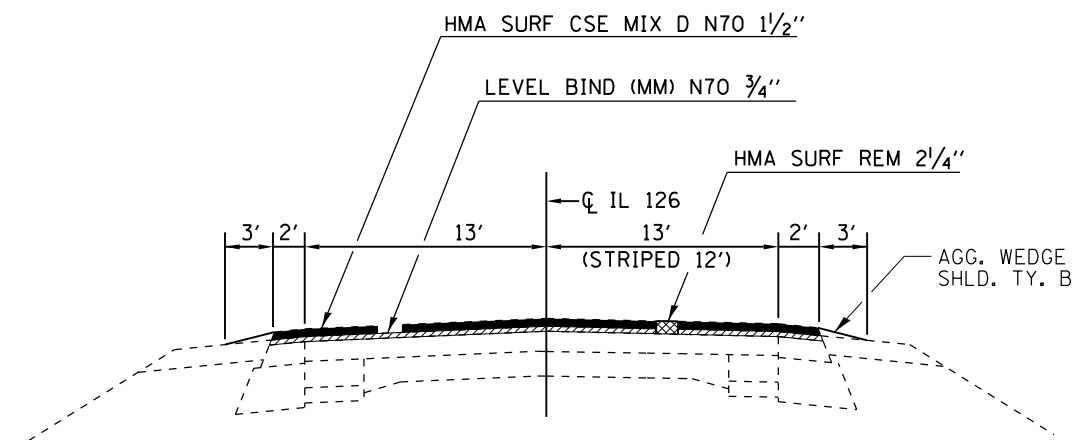
PROPOSED TYPICAL SECTION

STA. 29+39 - STA. 32+50
 STA. 35+48 - STA. 39+24
 STA. 42+50 - STA. 59+00



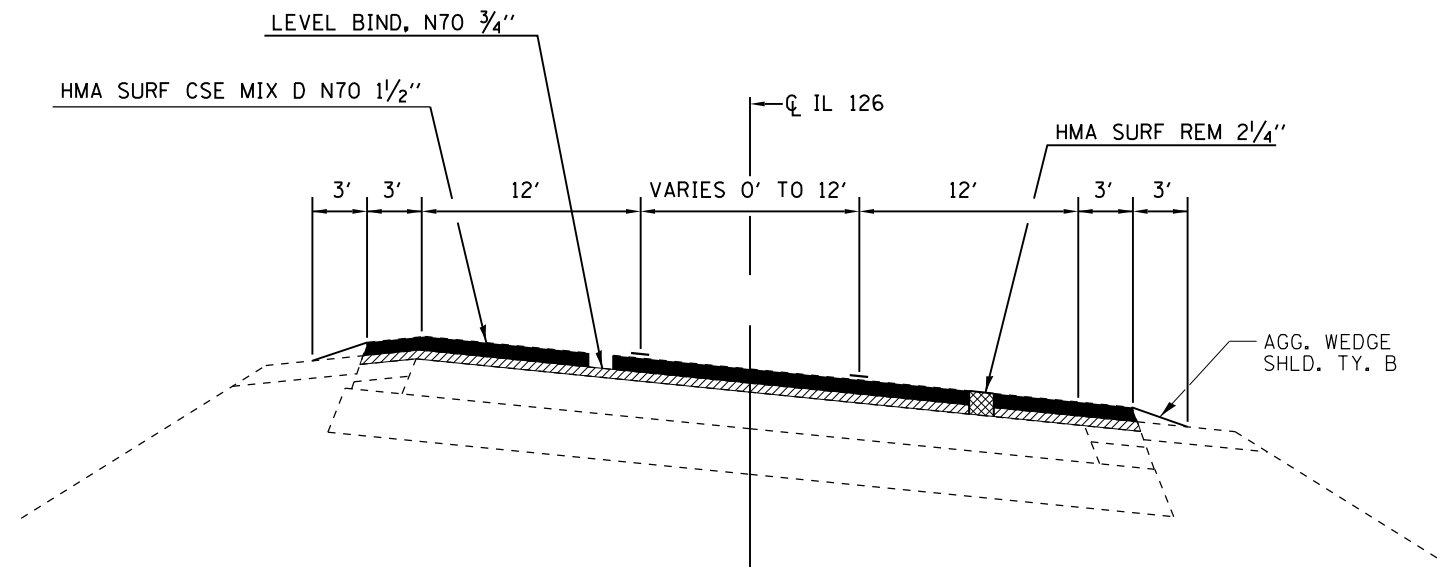
PROPOSED TYPICAL SECTION

STA. 60+91.56 - STA. 72+57.91



PROPOSED TYPICAL SECTION

STA. 59+00 - STA. 60+91.56



PROPOSED TYPICAL SECTION

STA. 72+57.91 - STA. 78+56

FILE NAME =	USER NAME = duncanbd	DESIGNED -	REVISED -
et:\pwork\pwork\duncanbd\dms84419\ED005104-sht-typical.dgn		DRAWN -	REVISED -
		CHECKED -	REVISED -
		DATE -	REVISED -

**STATE OF ILLINOIS
 DEPARTMENT OF TRANSPORTATION**

TYPICAL SECTIONS

SCALE: SHEET OF SHEETS STA. TO STA.

F.A.U. RTE.	SECTION	COUNTY	TOTAL SHEETS	SHEET NO.
379	118R5-3	KENDALL	19	7
CONTRACT NO. 66473				
ILLINOIS FED. AID PROJECT				

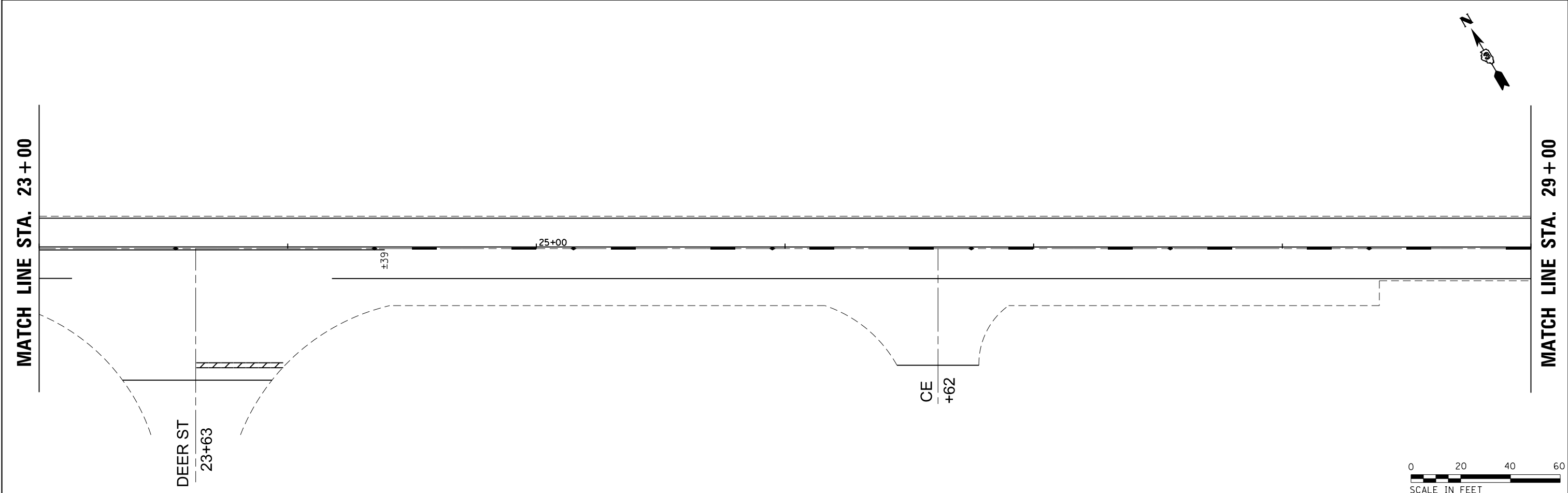
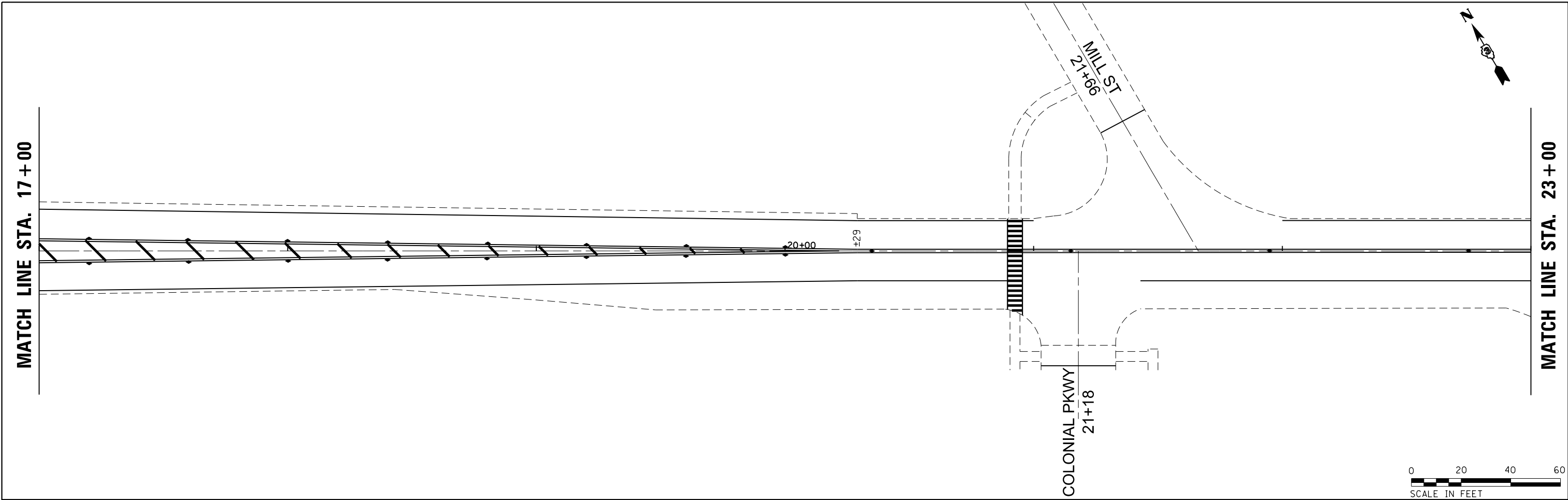
MAINLINE								
STATIONS	HMA SURF REM	MIX FOR CRKS JTS FLANGE	LEV BIND (HM) N70	BIT MAT PRIME COAT	LEV BIND (MM) IL 9.5FG N70	HMA SURF CSE MIX "D" N70	AGG WEDGE SHLDS TY B	TEMP RAMP
	2 1/4" SQ YD	TON	TON	POUND	TON	TON	TON	SQ YD
11+74 - 20+29	3970	1.19	1.84	2615.9	166.7	333.5	24.8	20
20+29 - 29+39	3547	1.06	1.31	2187.7	149.0	297.9	16.2	
29+39 - 32+50	898	0.27	0.45	606.2	37.7	75.4	13.3	
32+50 - 35+48(WOODEN BRIDGE)	1146	0.34	0.43	709.4	48.1	96.3	11.4	
35+48 - 39+24	1087	0.33	0.54	733.7	45.7	91.3	16.1	
39+24 - 42+50(CROOKED CREEK)	1261	0.38	0.47	779.4	53.0	105.9	12.5	
42+50 - 59+00	4767	1.43	2.38	3217.7	200.2	400.4	70.5	
59+00 - 60+91.56	639	0.19	0.32	431.3	26.8	53.7	8.2	
60+91.56 - 72+57.91	3888	1.17	1.94	2624.4	163.3	326.6	45.0	
72+57.91 - 78+56	2592	0.78	1.30	1749.6	108.9	217.7	25.5	30
TOTALS	23795	7	11	15655	999	1999	243	50

CURB & SIDEWALK SCHEDULE						
DESCRIPTION	COMB. CURB & GUTTER REM	CC & G B6-12	SIDEWALK REM	PCC SIDEWALK 4"	DETECTABLE WARNING	SODDING SALT TOLERANT
	FOOT	FOOT	SQ FT	SQ FT	SQ FT	SQ YD
ACROSS IL 126						
NORTH	0	0	75	75	10	7.00
SOUTH	15	15	64	64	10	7.00
COLONIAL PARKWAY						
NORTHWEST CORNER	10	10	52	52	8	4.00
SOUTHEAST CORNER	10	10	34	34	8	6.00
TOTAL	35	35	225	225	36	24

SIDEROADS AND ENTRANCES					
STATION	DESCRIPTION	HMA SURF REM	BIT MATLS PR CT	INC HMA SURF	TEMP RAMP
		2 1/4" SQ YD	POUND	TON	SQ YD
12+08 LT	CE	57	26	7	
13+16 RT	CE	95	43	12	
15+35 LT	CE	205	92	26	
15+40 RT	CE	64	29	8	
21+18 RT	COLONIAL PARKWAY	86	39	11	25
21+66 LT	MILL STREET	176	79	22	16.7
23+63 RT	DEER STREET	314	141	40	
26+62 RT	CE	126	57	16	
29+78 LT	PE	18	8	2	
29+92 RT	PE	18	8	2	
35+09 RT	WOODEN BRIDGE RD	63	28	8	21.6
42+07 RT	CROOKED CREEK RD	67	30	8	21.6
43+71 LT	PE	18	8	2	50
65+50 RT	IDENTA RD	238	107	30	49.2
TOTALS		1545	695	195	184

PAVEMENT MARKINGS																
STA. TO STA.	POLYUREA TYPE 1								LETTERS & SYMBOLS SQ FT	RAISED REFL PAVT MARK EACH	TEMPORARY (2 APPLICATIONS)				LETTERS & SYMBOLS SQ FT	SHORT TERM (3 APP) FOOT
	4"		6"		8"	12"		24"			4"	6"	8"	12"		
	YELLOW FOOT	WHITE FOOT	YELLOW FOOT	WHITE FOOT	WHITE FOOT	YELLOW FOOT	WHITE FOOT	WHITE FOOT			FOOT	FOOT	FOOT	FOOT		
11+74 - 15+35																
MEDIAN	917						66			18	1834			132	304.2	
TURN LANE					206				46.8	5			412	93.6	496.5	
EDGE LINE		643														
CE 15+35 LT																
STOPBAR								47								
15+35 - 20+29																
MEDIAN	1818						188			31	3636			376	547.2	
EDGE LINE		943														
20+29 - 24+39																
CENTERLINE	820									6	1640				123	
EDGE LINE		562														
CROSSWALK				76				112								
DEER ST RT																
STOPBAR								12								
24+39 - 36+02																
CENTERLINE	1163		290							14	2326	580			348.9	
EDGE LINE		2266														
TURN LANE					125				31.2	4			250		37.5	
36+02 - 44+23																
CENTERLINE			210							10		420			246.3	
EDGE LINE		1560														
TURN LANE					135				31.2	4			270		40.5	
44+23 - 54+20																
CENTERLINE	997		250							13	1994	500			299.1	
EDGE LINE		1994														
54+20 - 72+58																
CENTERLINE	3676									23	7352				551.4	
EDGE LINE		3676														
72+58 - 78+56																
MEDIAN	2175						191			30	4350			382	670.8	
EDGE LINE		1196														
TURN LANE					148				15.6	2		296		31.2	167.4	
TOTAL	11566	12840	750	76	614	445	112	59	124.8	160	23132	1796	932	890	124.8	3833

FOLDER 126-2				CONTRACT NO. 66473	
ILL RTE 126		IL 47 TO WEST OF IL 71		KENDALL COUNTY	
GPS POINT NUMBER OR INDEX NUMBER	DESCRIPTION	EXISTING MONUMENT TYPE	PROPOSED MONUMENT TYPE	MONUMENT RECORD TO BE RECORDED	RESPONSIBILITY
126020	E QTR COR SEC 4-36-7E OF THE 3RD PM	PK NAIL	TYPE 1	YES	1
<p>THIS NOTE TO BE INCLUDED IN PLANS: LISTED MONUMENT LOCATIONS HAVE BEEN RECORDED BY GPS. PRE CONSTRUCTION TIES BY THE R.E. ARE NOT REQUIRED. IF AN UNLISTED MONUMENT IS FOUND, IT MUST BE TIED BY THE R.E. AND BROUGHT TO THE ATTENTION OF THE PLATS AND PLANS MANAGER. AFTER RESURFACING, THE R.E. IS TO CONTACT THE PLATS AND PLANS MANAGER TO ESTABLISH LOCATIONS FOR PERMANENT SURVEY MARKER CORING.</p> <p>RESPONSIBILITY: 1) RESIDENT TO RE-ESTABLISH MONUMENT (PAY ITEM REQUIRED. PERMANENT SURVEY MARKER, TYPE 1) 2) PLATS AND PLANS TO RE-ESTABLISH MONUMENT</p>					



FILE NAME =	USER NAME = duncanbd	DESIGNED -	REVISED -	STATE OF ILLINOIS DEPARTMENT OF TRANSPORTATION	PLAN VIEWS			F.A.U. RTE.	SECTION	COUNTY	TOTAL SHEETS	SHEET NO.
Default	ce:\pw\work\p\midot\duncanbd\dms84419\ED005104-sht-plan.dgn	DRAWN -	REVISED -		SCALE: 1"=20'	SHEET 2 OF 7 SHEETS	STA. 17+00 TO STA. 29+00	379	118R5-3	KENDALL	19	11
	PLOT SCALE = 48.0000' / in.	CHECKED -	REVISED -		CONTRACT NO. 66473							
	PLOT DATE = 6/4/2014	DATE -	REVISED -		ILLINOIS FED. AID PROJECT							

MATCH LINE STA. 29+00

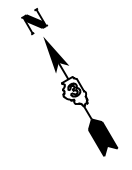
MATCH LINE STA. 35+00

SN 047-2533

PE
+78

PE
+92

30+00



MATCH LINE STA. 35+00

MATCH LINE STA. 41+00

35+00

35+00

40+00

WOODEN BRIDGE
35+09



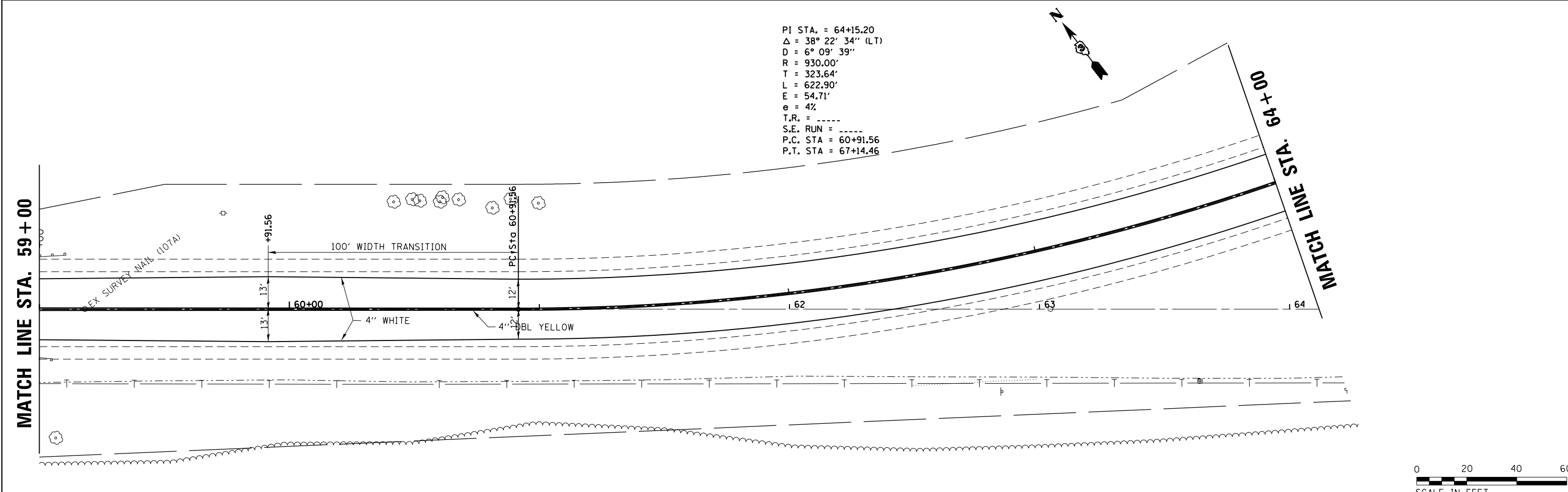
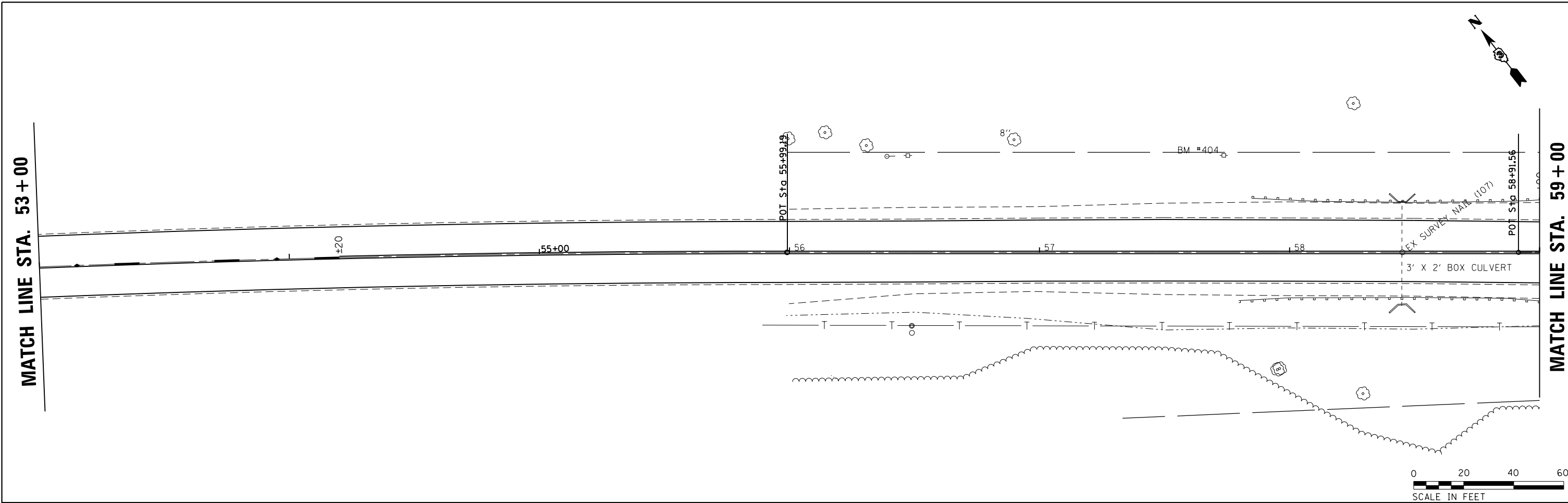
FILE NAME =	USER NAME = duncanbd	DESIGNED -	REVISED -
c:\pwork\work\pwork\dot\duncanbd\dms84419\ED005104-sht-plan.dgn		DRAWN -	REVISED -
Default	PLOT SCALE = 40.0000' / in.	CHECKED -	REVISED -
	PLOT DATE = 6/4/2014	DATE -	REVISED -

STATE OF ILLINOIS
DEPARTMENT OF TRANSPORTATION

PLAN VIEWS

SCALE: 1"=20' SHEET 3 OF 7 SHEETS STA. 29+00 TO STA. 41+00

F.A.U. RTE.	SECTION	COUNTY	TOTAL SHEETS	SHEET NO.
379	118R5-3	KENDALL	19	12
CONTRACT NO. 66473				
ILLINOIS FED. AID PROJECT				



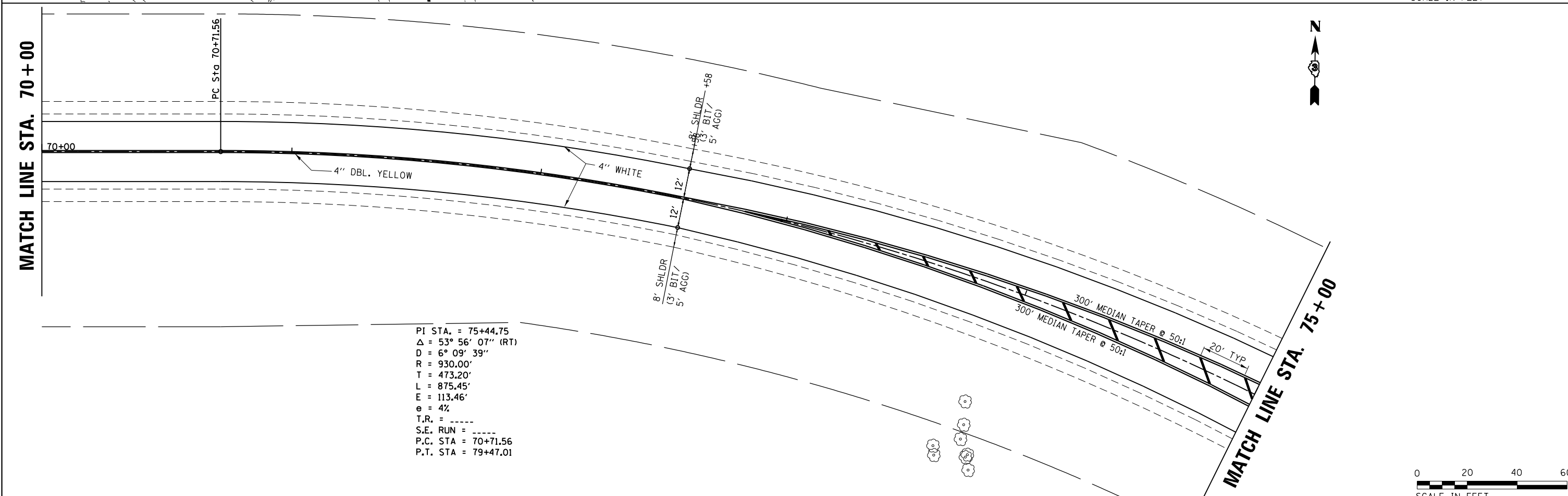
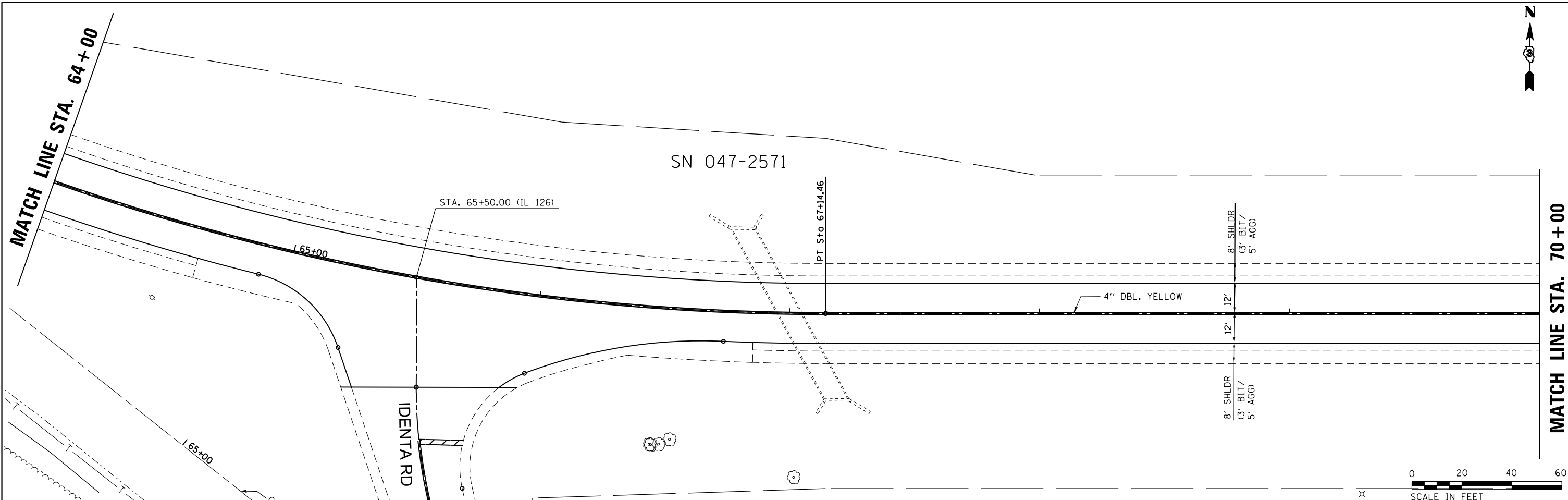
PI STA. = 64+15.20
 $\Delta = 38^\circ 22' 34''$ (LT)
 $D = 6^\circ 09' 39''$
 $R = 930.00'$
 $T = 323.64'$
 $L = 622.90'$
 $E = 54.71'$
 $e = 4\%$
 $T.R. = \text{-----}$
 $S.E. RUN = \text{-----}$
 $P.C. STA = 60+91.56$
 $P.T. STA = 67+14.46$

FILE NAME =	USER NAME = duncanbd	DESIGNED -	REVISED -
ei:\pwork\work\pwork\dot\duncanbd\dms84419\ED005104-sht-plan.dgn		DRAWN -	REVISED -
Default	PLOT SCALE = 40.0000' / in.	CHECKED -	REVISED -
	PLOT DATE = 6/4/2014	DATE -	REVISED -

STATE OF ILLINOIS
DEPARTMENT OF TRANSPORTATION

PLAN VIEWS
 SCALE: 1"=20' SHEET 5 OF 7 SHEETS STA. 53+00 TO STA. 64+00

F.A.U. RTE.	SECTION	COUNTY	TOTAL SHEETS	SHEET NO.
379	118R5-3	KENDALL	19	14
CONTRACT NO. 66473				
ILLINOIS FED. AID PROJECT				



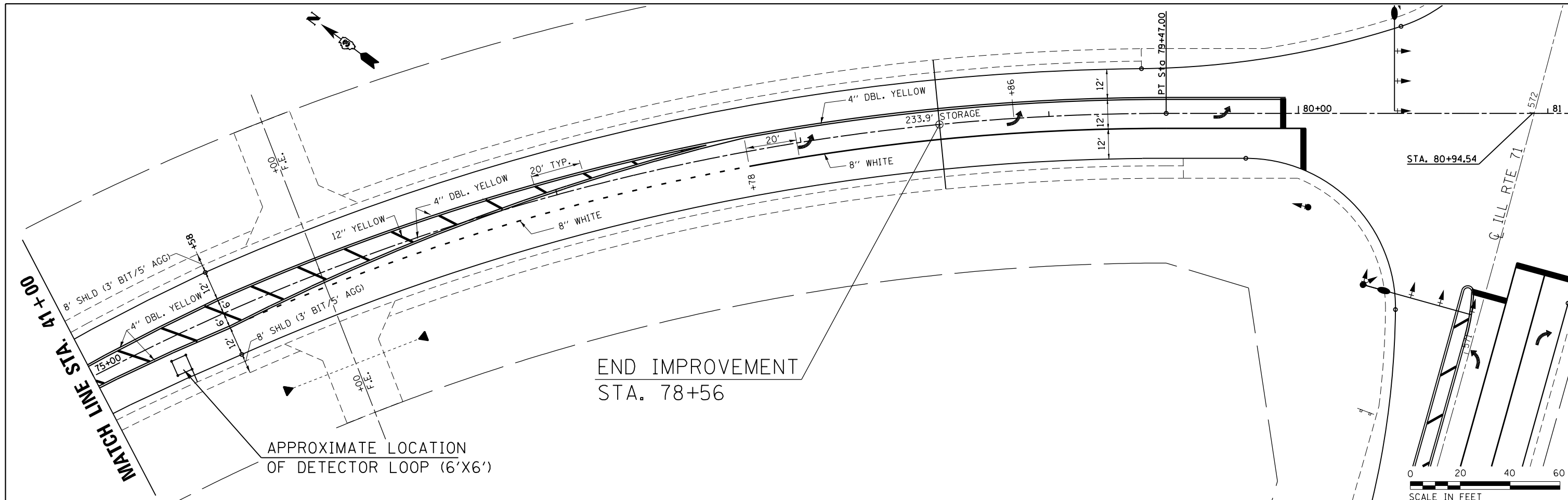
PI STA. = 75+44.75
 Δ = 53° 56' 07" (RT)
 D = 6° 09' 39"
 R = 930.00'
 T = 473.20'
 L = 875.45'
 E = 113.46'
 e = 4%
 T.R. = -----
 S.E. RUN = -----
 P.C. STA = 70+71.56
 P.T. STA = 79+47.01

FILE NAME =	USER NAME = duncanbd	DESIGNED -	REVISED -
c:\pwork\work\pwork\dot\duncanbd\dms84419\ED06104-sht-plan.dgn		DRAWN -	REVISED -
Default	PLOT SCALE = 40.0000' / in.	CHECKED -	REVISED -
	PLOT DATE = 6/4/2014	DATE -	REVISED -

STATE OF ILLINOIS
DEPARTMENT OF TRANSPORTATION

PLAN VIEWS
 SCALE: 1"=20' SHEET 6 OF 7 SHEETS STA. 64+00 TO STA. 75+00

F.A.U. RTE.	SECTION	COUNTY	TOTAL SHEETS	SHEET NO.
379	118R5-3	KENDALL	19	15
CONTRACT NO. 66473				
ILLINOIS FED. AID PROJECT				



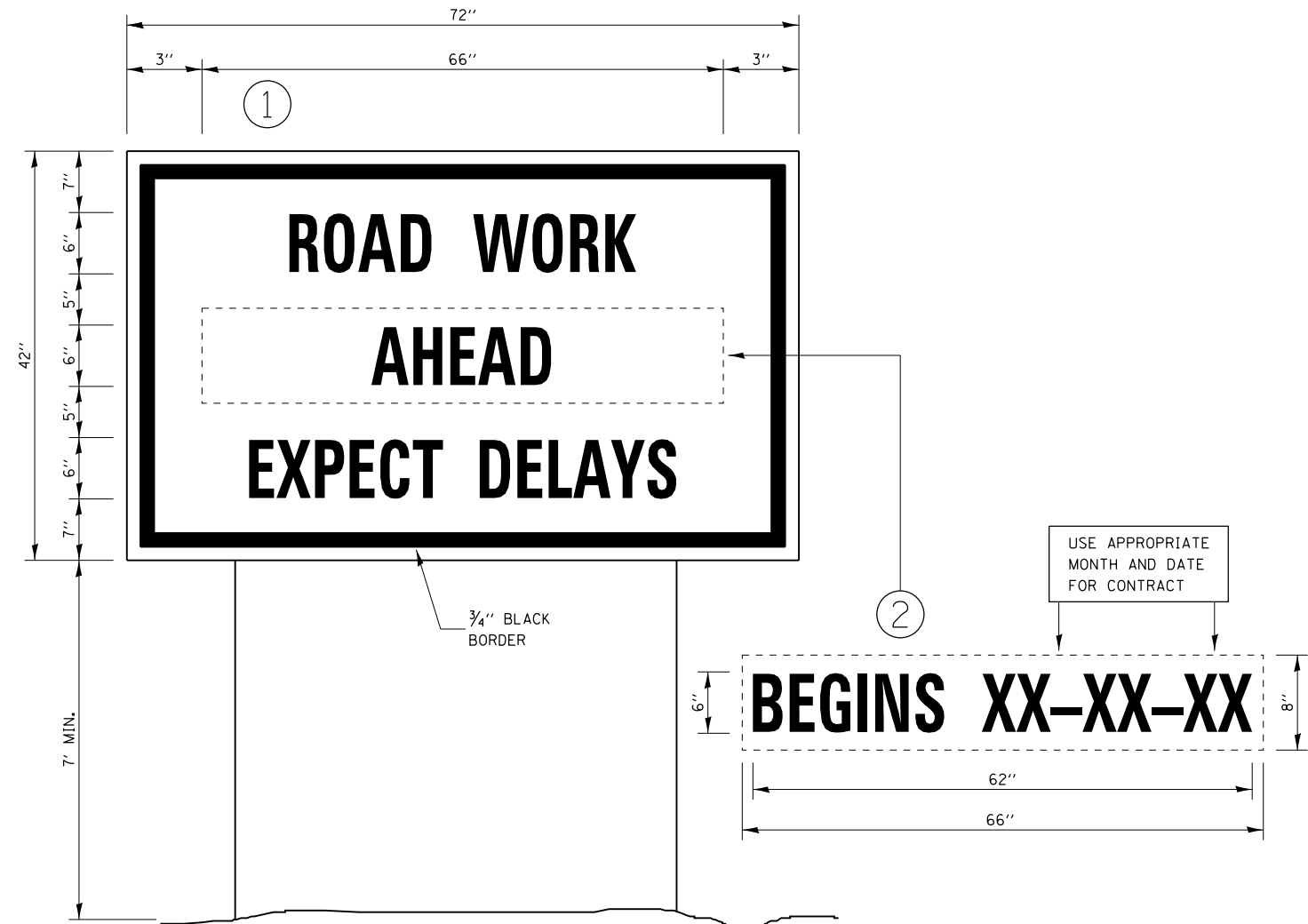
FILE NAME =	USER NAME = duncanbd	DESIGNED -	REVISED -
et:\pw\work\p1dot\duncanbd\dms84419\ED005104-sht-plan.dgn		DRAWN -	REVISED -
Default	PLOT SCALE = 40.0000' / in.	CHECKED -	REVISED -
	PLOT DATE = 6/4/2014	DATE -	REVISED -

**STATE OF ILLINOIS
DEPARTMENT OF TRANSPORTATION**

PLAN VIEWS

SCALE: 1"=20' SHEET 7 OF 7 SHEETS STA. 75+00 TO STA. 81+00

F.A.U. RTE.	SECTION	COUNTY	TOTAL SHEETS	SHEET NO.
379	118R5-3	KENDALL	19	16
CONTRACT NO. 66473				
ILLINOIS FED. AID PROJECT				

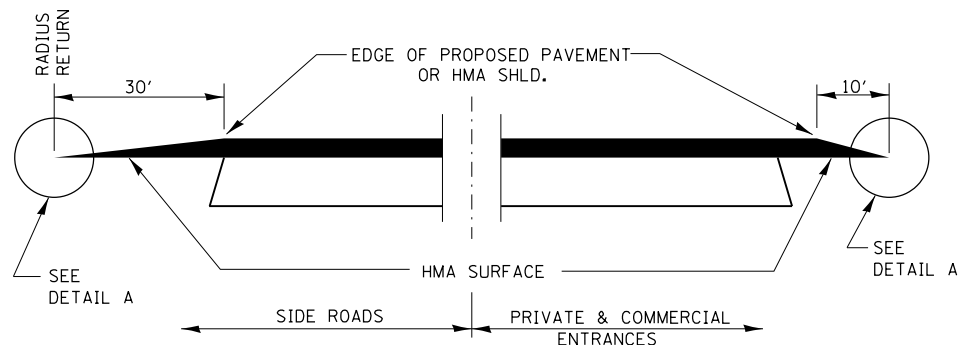


TEMPORARY INFORMATION SIGNING

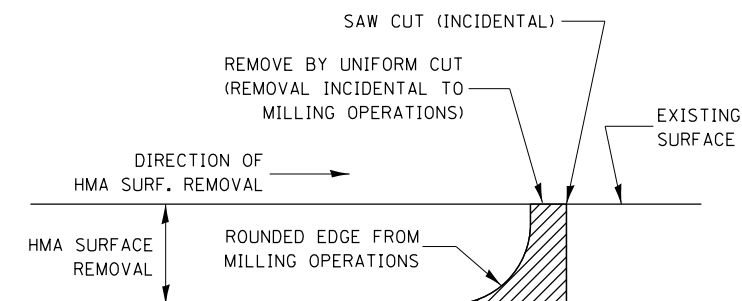
NOTES:

1. USE 6" D BLACK LETTERING ON FLOURESENT ORANGE BACKGROUND.
2. ERECT SIGNS AT LOCATIONS IN ADVANCE OF THE "ROAD CONSTRUCTION AHEAD" SIGNS AS DIRECTED BY THE ENGINEER.
3. ERECT SIGN ① WITH INSTALLED PANEL ② A MINIMUM OF ONE WEEK PRIOR TO THE START OF THE LANE CLOSURE.
4. REMOVE PANEL ② ON THAT DATE.
5. SEE SPECIAL PROVISION "TEMPORARY INFORMATION SIGNING" FOR ADDITIONAL INFORMATION.
6. WILL BE PAID FOR PER SO FT AS "TEMPORARY INFORMATION SIGNING". EACH SIGN = 21 SO FT AND THE DATE PANEL ② WILL NOT BE MEASURED SEPARATELY FOR PAYMENT.

FILE NAME =	USER NAME = duncanbd	DESIGNED -	REVISED -	STATE OF ILLINOIS DEPARTMENT OF TRANSPORTATION	DETAILS			F.A.U. RTE.	SECTION	COUNTY	TOTAL SHEETS	SHEET NO.	
et:\pw\work\p1dot\duncanbd\dms84419\ED005104-sht-details.dgn	DRAWN -	REVISED -	REVISED -		SCALE:	SHEET NO. 1 OF 2 SHEETS	STA.	TO STA.	379	118R5-3	KENDALL	19	17
	PLOT SCALE = 100.0000' / in.	CHECKED -	REVISED -		CONTRACT NO. 66473								
	PLOT DATE = 6/4/2014	DATE -	REVISED -		ILLINOIS FED. AID PROJECT								



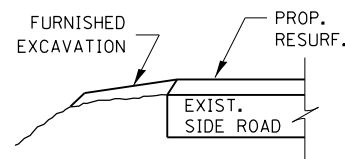
SECTION A-A
DETAILS AT ENTRANCES & SIDE ROADS



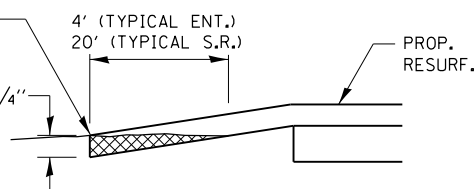
NOTE:
WHEN MILLING OPERATIONS PRODUCE A ROUNDED EDGE, THEN A SAW CUT SHALL BE USED TO MANUFACTURE A PERPENDICULAR EDGE AS SHOWN IN THE DETAIL. THE ENGINEER SHALL BE THE SOLE JUDGE CONCERNING THE USE OF THIS DETAIL

HMA DETAIL AT BUTT JOINTS

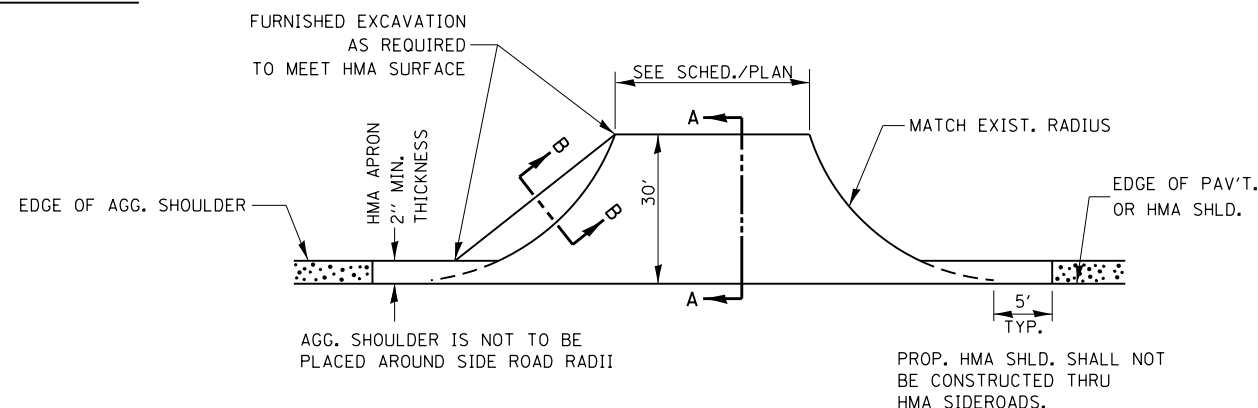
THE COST OF REMOVAL AT EXISTING HMA OR P.C.C. LOCATIONS SHALL BE PAID FOR PER SQ. YD. BY THE APPROPRIATE PAY ITEM. REMOVAL AT THE EXISTING AGG. LOCATIONS SHALL BE INCIDENTAL TO THE HMA. A-3 LOCATIONS SHALL BE FEATHER TAPERED.



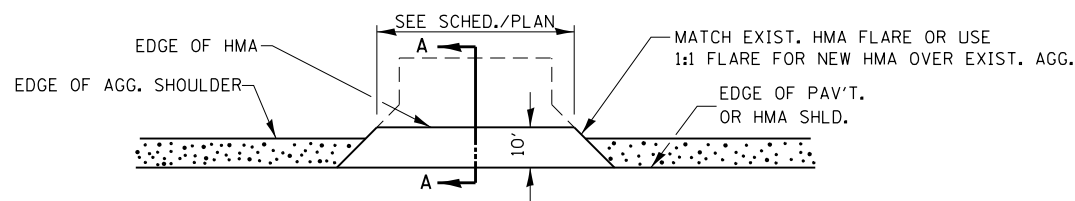
SECTION B-B



DETAIL A



PLAN AT SIDE ROADS



PLAN AT PRIVATE & COMMERCIAL ENTRANCES

(DO NOT RESURFACE FIELD ENTRANCES)

FILE NAME =	USER NAME = duncanbd	DESIGNED -	REVISED -	STATE OF ILLINOIS DEPARTMENT OF TRANSPORTATION	DETAILS			F.A.U. RTE.	SECTION	COUNTY	TOTAL SHEETS	SHEET NO.	
et:\pw\work\p\dot\duncanbd\dms84419\ED005104-sht-details.dgn		DRAWN -	REVISED -		SCALE:	SHEET 2 OF 2 SHEETS	STA.	TO STA.	379	118R5-3	KENDALL	19	18
		CHECKED -	REVISED -		CONTRACT NO. 66473								
		DATE -	REVISED -		ILLINOIS FED. AID PROJECT								

