

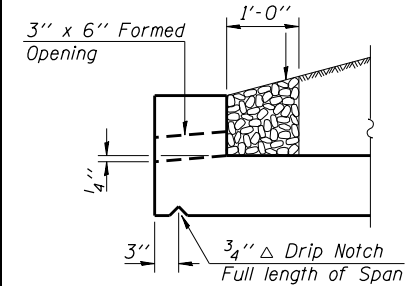
STATE OF ILLINOIS
DEPARTMENT OF TRANSPORTATION

ROUTE NO.	SECTION	COUNTY	TOTAL SHEETS	SHEET NO.
F.A.I. 57	••	IROQUOIS	190	62
FED. ROAD DIST. NO.	ILLINOIS			
** (38-4)RS-2, (38-4)BR1		Contract No. 66757		

Sheet 6 of 11 Sheets

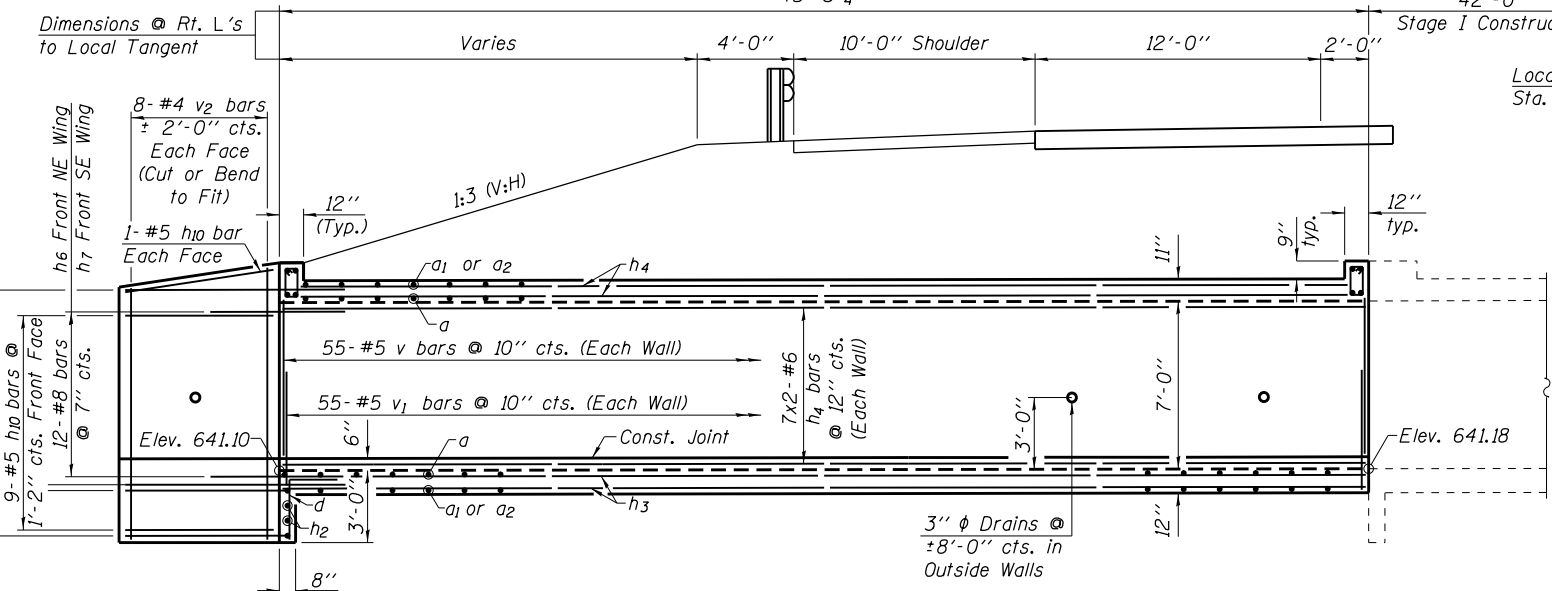
Coarse aggregate to be placed full length of all drained headwalls by Grading Contractor. Cost included with Concrete Box Culverts.

Notch formed by rough finished board attached to and removed with form work, center wall. (Do not chamfer).



AT DOWNSTREAM END
DRAIN DETAIL

4- #8 h13 bars @ 7" cts., Back Face (One leg in Cutoff Wall)



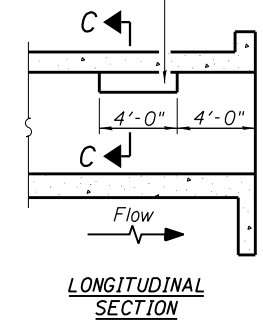
WING WALL REINFORCEMENT

ELEVATION

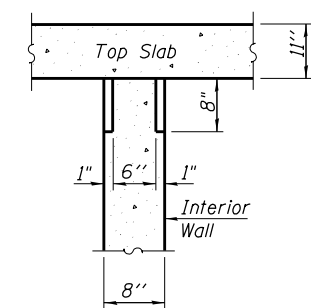
MINIMUM BAR LAP - BARREL

- #4 1'-4"
- #5 1'-8"
- #6 2'-0"

Note: All bar spacings shown are at right angles to bars.

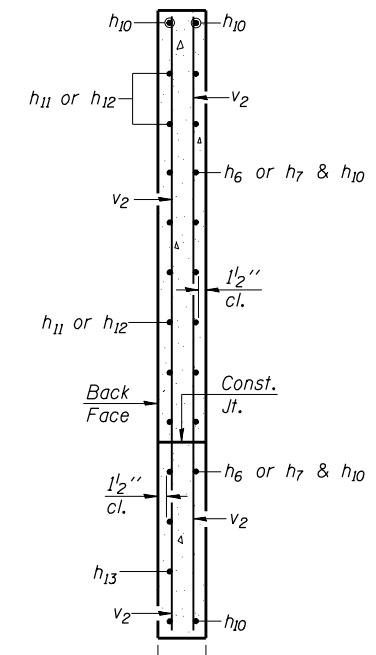


LONGITUDINAL SECTION

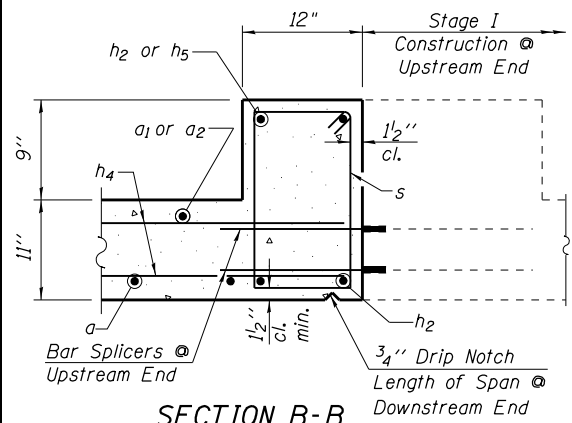


SECTION C-C

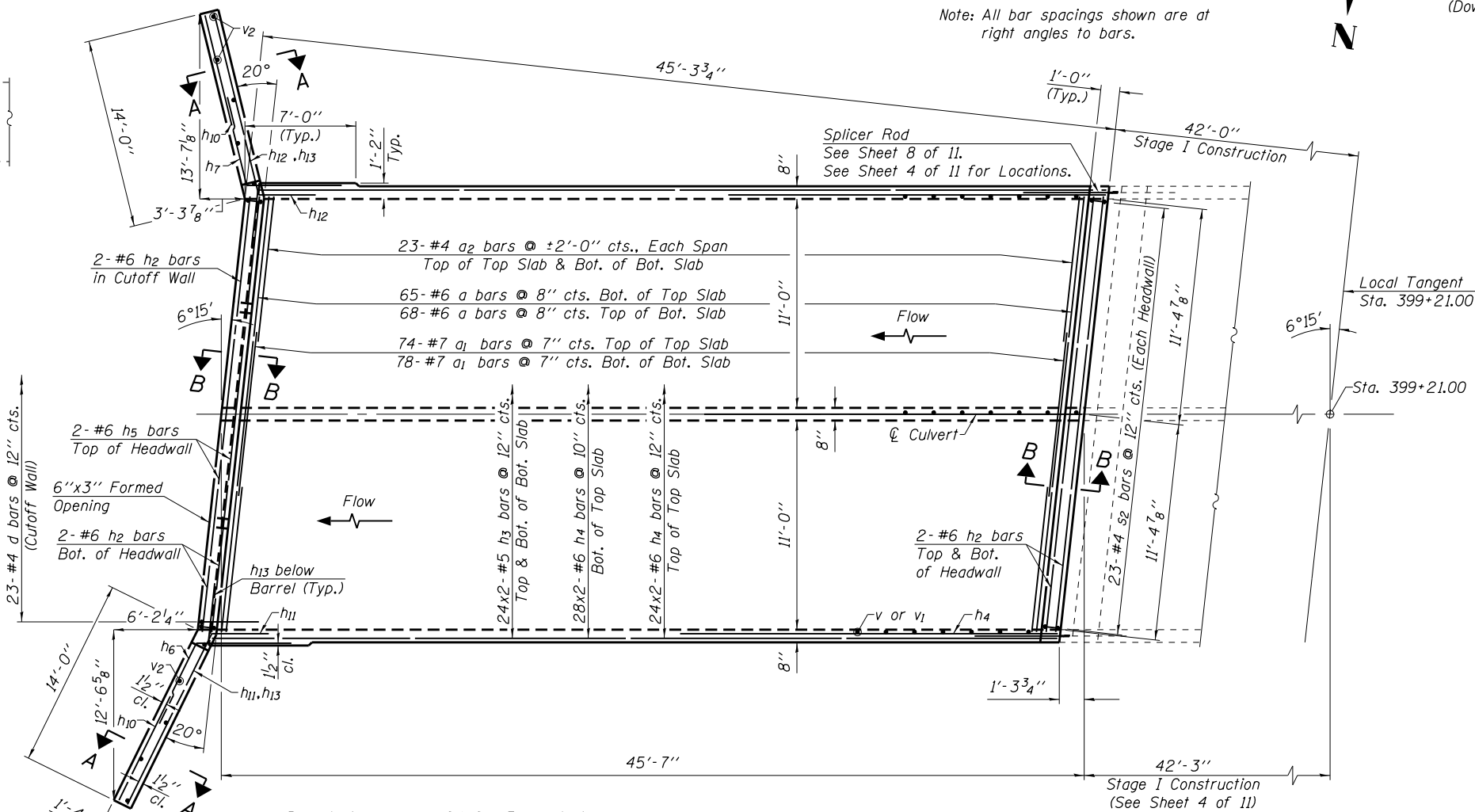
PHOEBE NESTING
SITE DETAILS
(Downstream End Only)



SECTION A-A



SECTION B-B



PLAN

Note: Bars indicated thus, 24x2-#5 etc. indicates 24 lines of bars with 2 lengths per line.

BILL OF MATERIAL - STAGE II (NORTHBOUND)

Bar No.	Size	Length	Shape	Bar No.	Size	Length	Shape	
a	133 #6	25'-1"	U	s2	46 #4	5'-1"	□	
a1	152 #7	11'-6"	—	v	165 #5	7'-6"	—	
a2	92 #4	7'-9"	—	v1	165 #5	3'-0"	—	
d	23 #4	5'-6"	—	v2	32 #4	11'-4"	—	
h2	8 #6	23'-9"	—					
h3	96 #5	23'-6"	—					
h4	146 #6	23'-9"	—					
h5	2 #6	23'-0"	—					
h6	12 #8	9'-0"	—					
h7	12 #8	9'-0"	—					
h10	22 #5	13'-9"	—					
h11	15 #8	17'-2"	—					
h12	15 #8	16'-11"	—					
h13	8 #8	14'-11"	—					
Stone Riprap, Class A4							Sq. Yd.	50
Filter Fabric							Sq. Yd.	50
Reinforcement Bars							Pound	21,840
Concrete Box Culverts							Cu. Yd.	120.3

Note: See Sheet 7 of 11 for additional Culvert Details & Bar Bends.

STAGE II CULVERT CONSTRUCTION
NORTHBOUND LANES
I-57 OVER
DANFORTH TOWNSHIP DRAINAGE DITCH
F.A.I. ROUTE 57
SECTION (38-4)RS-2, (38-4)BR1
IROQUOIS COUNTY
STATION 399+21.00
S.N. 038-2020

DESIGNED	S.F.M.
CHECKED	J.A.M.
DRAWN	S.A.P.
CHECKED	S.F.M. & J.A.M.