

STATE OF ILLINOIS
DEPARTMENT OF TRANSPORTATION

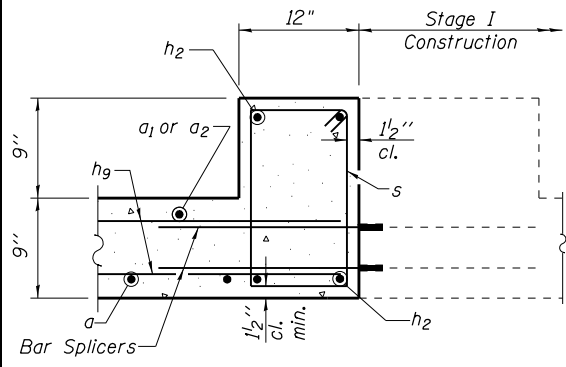
ROUTE NO.	SECTION	COUNTY	TOTAL SHEETS	SHEET NO.
F.A.I. 57	••	IROQUOIS	190	72

FED. ROAD DIST. NO. ILLINOIS
** (38-4)RS-2, (38-4)BR3 CONTRACT NO. 66757
Sheet 5 of 11 Sheets

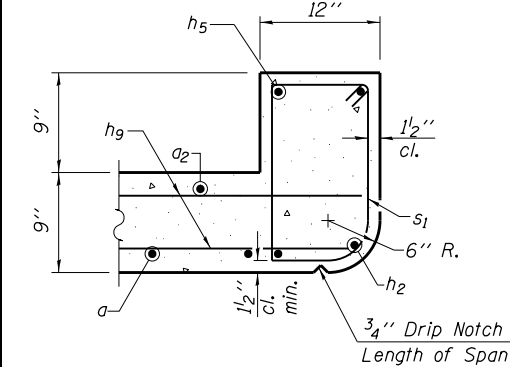
MINIMUM BAR LAP - BARREL

- #4 1'-4"
- #5 1'-8"
- #6 2'-0"

Note: All bar spacings shown are at right angles to bars.

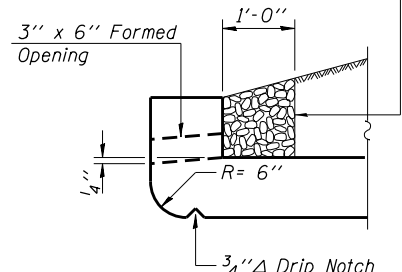


SECTION B-B



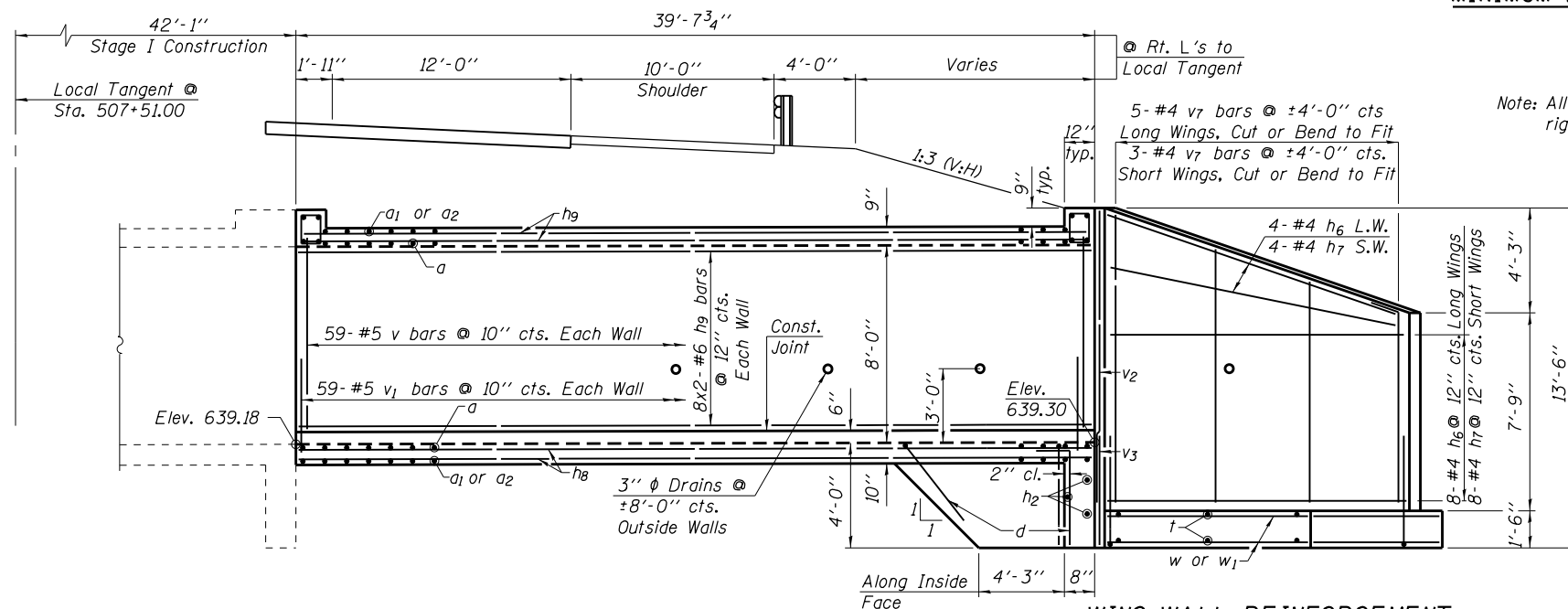
SECTION C-C

Coarse aggregate to be placed full length of all drained headwalls by Grading Contractor. Cost included with Concrete Box Culverts.



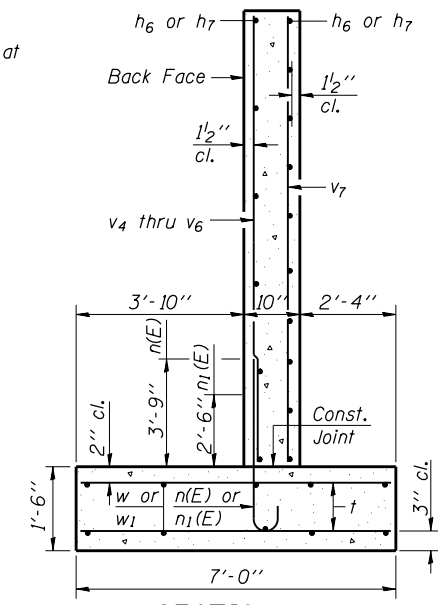
AT UPSTREAM END
DRAIN DETAILS

DESIGNED	S.F.M.
CHECKED	J.A.M.
DRAWN	S.A.P.
CHECKED	S.F.M. & J.A.M.



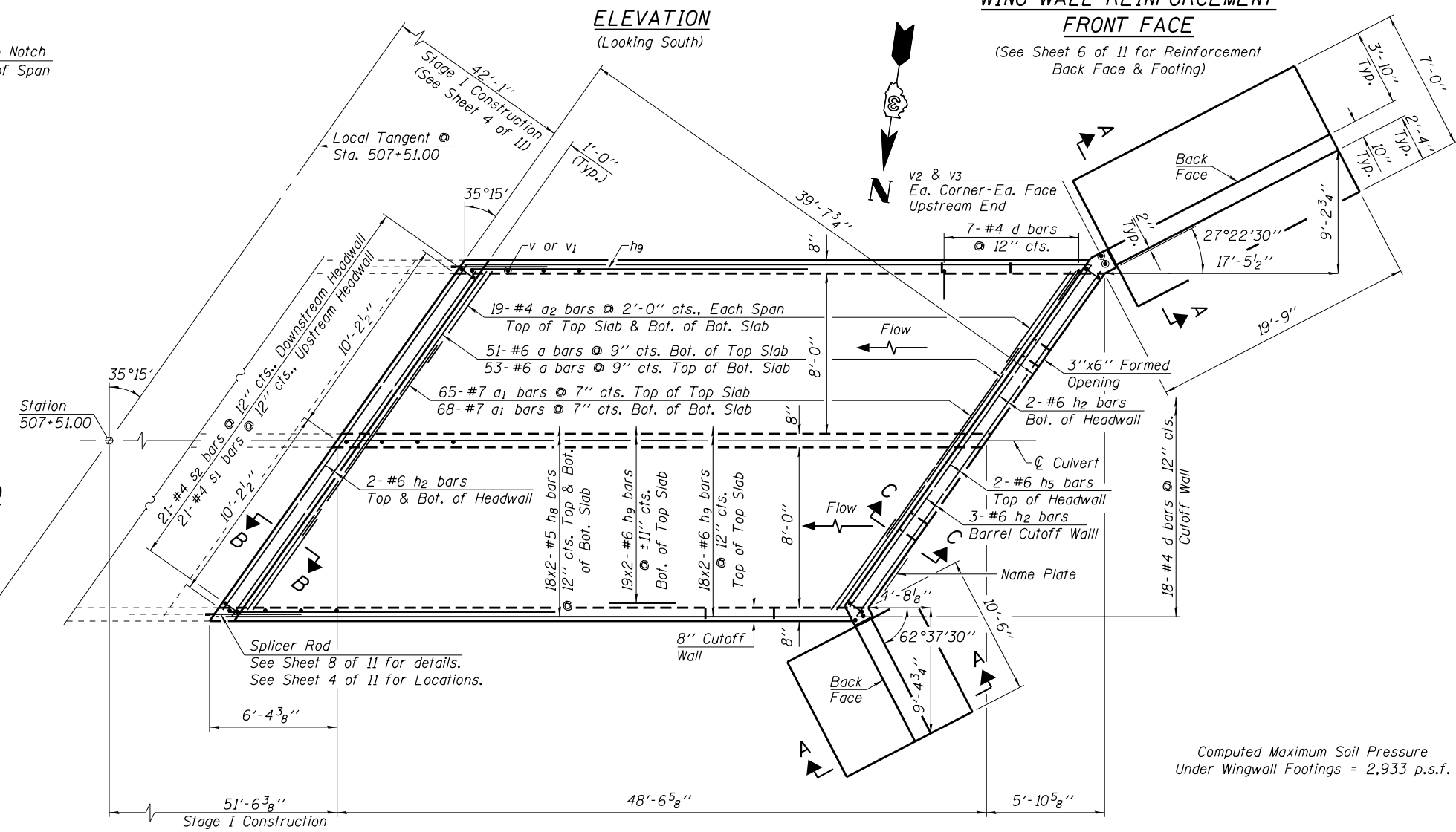
WING WALL REINFORCEMENT
FRONT FACE

(See Sheet 6 of 11 for Reinforcement Back Face & Footing)



SECTION A-A

ELEVATION
(Looking South)



PLAN

BILL OF MATERIAL - STAGE II (SOUTH BOUND)

Bar	No.	Size	Length	Shape	Bar	No.	Size	Length	Shape
a	104	#6	23'-0"	U	s1	21	#4	4'-6"	U
a1	133	#7	11'-0"	U	s2	21	#4	4'-9"	U
a2	76	#4	7'-0"	U	t	83	#4	6'-9"	U
d	32	#4	5'-6"	J	v	177	#5	8'-0"	U
h2	9	#6	21'-9"	U	v1	177	#5	3'-0"	U
h5	2	#6	21'-0"	U	v2	4	#5	8'-6"	U
h6	18	#4	18'-8"	U	v3	4	#5	6'-3"	U
h7	18	#4	9'-5"	U	v4	9	#5	7'-6"	U
h8	72	#5	25'-0"	U	v5	11	#5	8'-9"	U
h9	122	#6	25'-3"	U	v6	9	#5	10'-3"	U
n(E)	29	#6	5'-7"	U	v7	8	#4	11'-6"	U
n1(E)	27	#5	4'-3"	U	w	10	#5	18'-8"	U
					w1	10	#5	9'-5"	U

Concrete Box Culverts	Cu. Yd.	104.3
Reinforcement Bars, Epoxy Coated	Pound	360
Reinforcement Bars	Pound	17,470
Name Plate	Each	1
Stone Riprap, Class A4	Sq. Yd.	54
Filter Fabric	Sq. Yd.	54

Note: See Sheet 7 of 11 for additional Culvert Details & Bar Bends.

STAGE II CULVERT CONSTRUCTION
SOUTHBOUND LANES
I-57 OVER
DANFORTH TOWNSHIP DRAINAGE DITCH
F.A.I. ROUTE 57
SECTION (38-4)RS-2, (38-4)BR3
IROQUOIS COUNTY
STATION 507+51.00
S.N. 038-2019

Computed Maximum Soil Pressure
Under Wingwall Footings = 2,933 p.s.f.

Note: Bars indicated thus, 18x2-#5 etc. indicates
18 lines of bars with 2 lengths per line.