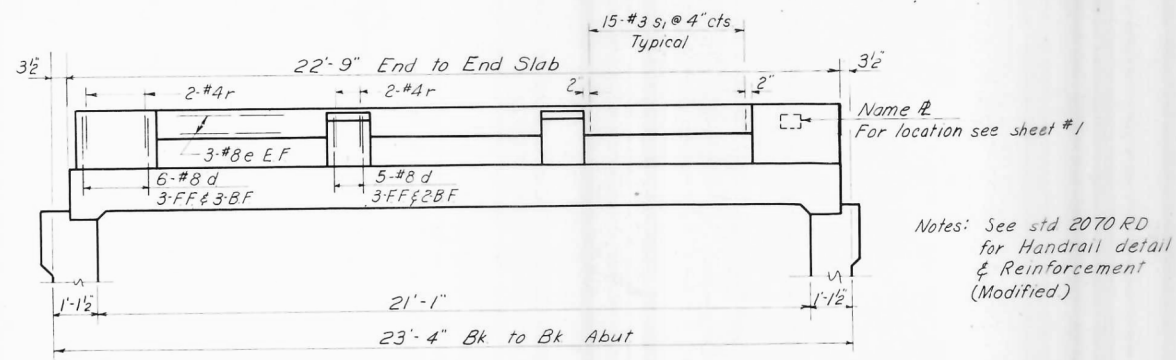
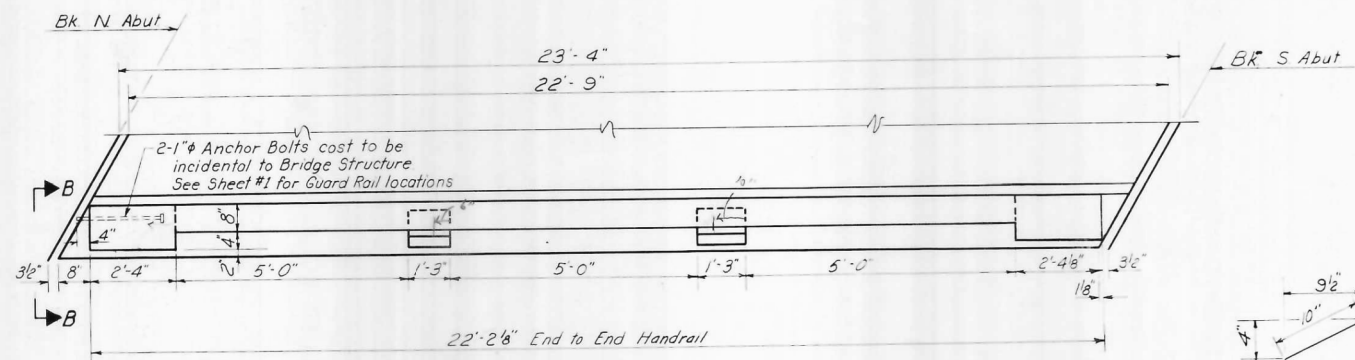


\* 38-4, 4B, 4B-1, 4B-2, 4B-3.



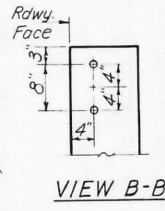
**ELEVATION**

Notes: See std 2070 RD for Handrail detail & Reinforcement (Modified)

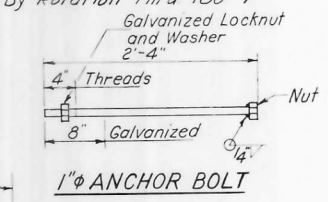


**PLAN**

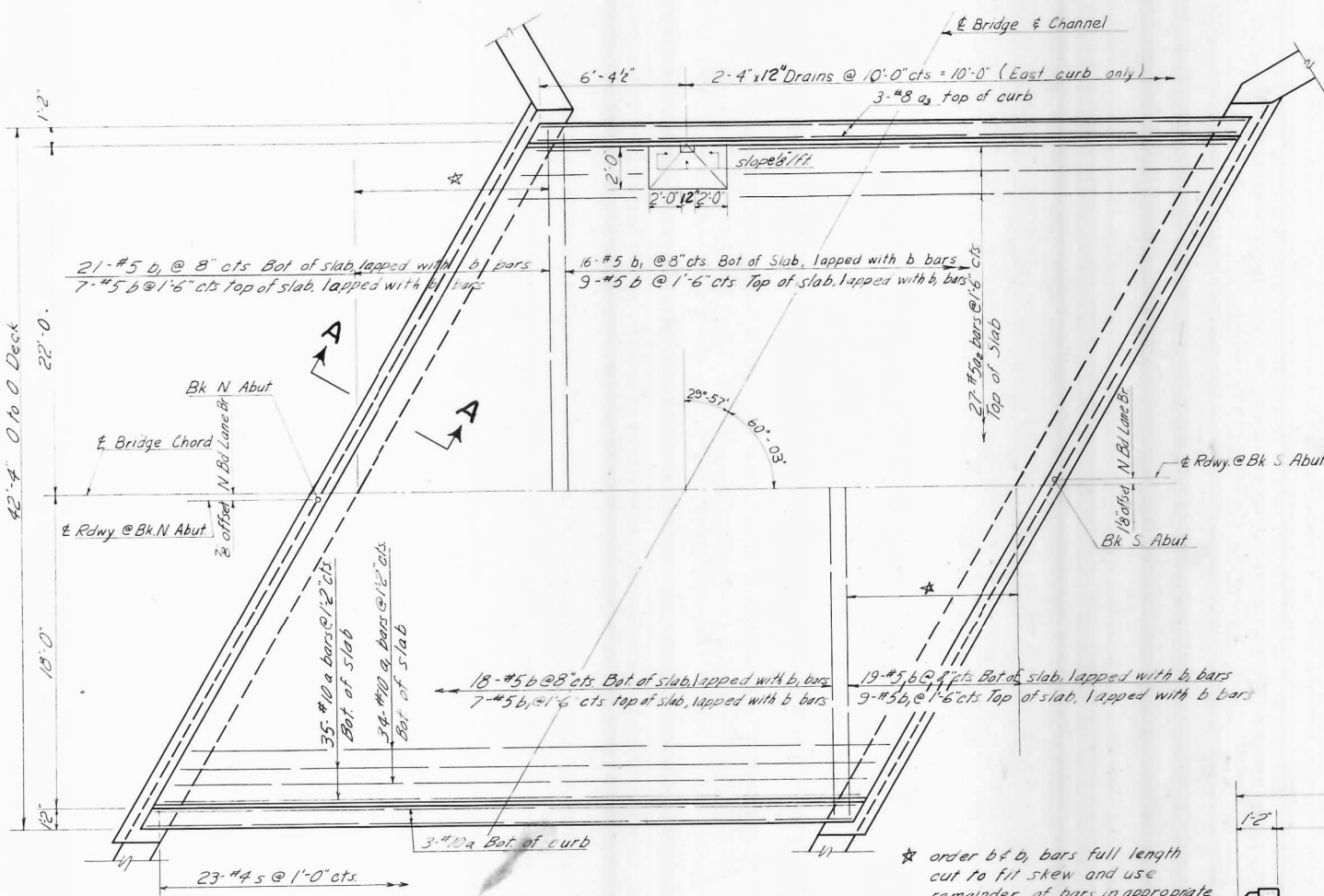
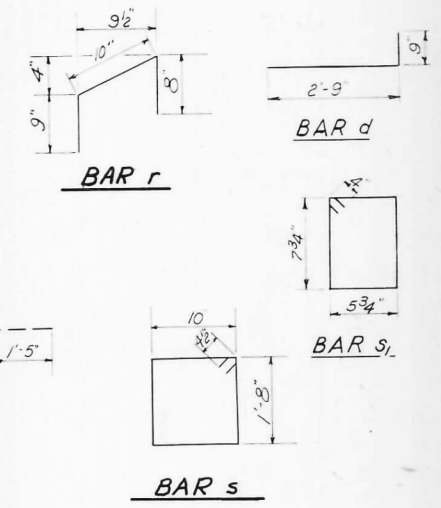
(Showing West Handrail, East Handrail Similar By Rotation Thru 180°)



**VIEW B-B**



**1" ANCHOR BOLT**



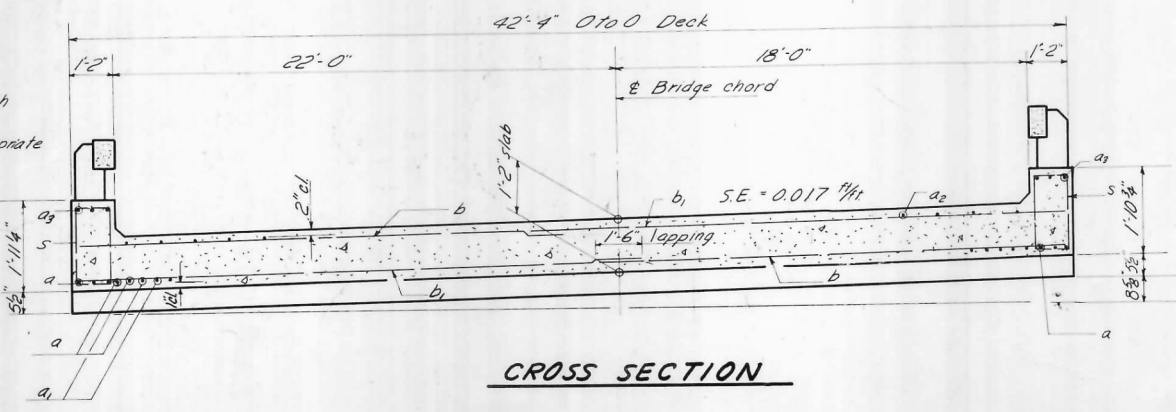
**PLAN**

(Showing N. Bound Lane Bridge. S Bound Lane Br similar by rotation thru 180° See sheet 1 of 6 for offset of S. Bd Lane of Bridge)

Dec. 10 19 62

DESIGNED *Wei Hong*  
CHECKED *Richard P.*  
DRAWN *T. Fuller*  
CHECKED *R. P.*

EXAMINED *W. Raumann*  
PASSED *E. H. ...*  
APPROVED *V. E. ...*



**CROSS SECTION**

**BILL OF MATERIAL**

Bar	No	Size	Length	Shape
a	82	#10	25'-4"	┌
a1	68	#10	22'-6"	┌
a2	54	#5	22'-6"	┌
a3	12	#8	22'-6"	┌
b	106	#5	19'-9"	┌
b1	106	#5	23'-9"	┌
d	88	#8	3'-6"	┌
e	24	#8	21'-9"	┌
r	32	#4	2'-3"	┌
s	92	#4	5'-9"	┌
s1	180	#3	2'-11"	┌
Class x Concrete		Cu yds	90.2	
Reinforcement Bars		Lbs	25,130	
Handrail Concrete		Cu yds	3.0	
Name Plates		Each	2	

**SUPERSTRUCTURE**  
N.E.S. BD LANE BRIDGES  
F.A.I. RT. 57 SEC. 38-4B  
IROQUOIS COUNTY  
STA. 348+54.5

FILE NAME =	USER NAME = duncanbd	DESIGNED -	REVISED -
et:\pw\work\p1dot\duncanbd\dms30388\ep05005-sh1-F10.DGN		DRAWN -	REVISED -
		CHECKED -	REVISED -
		DATE -	REVISED -

STATE OF ILLINOIS  
DEPARTMENT OF TRANSPORTATION

FOR INFORMATION ONLY  
EXISTING SN 038-001/0012

SCALE: SHEET NO. OF SHEETS STA. TO STA.

F.A.I. RTE.	SECTION	COUNTY	TOTAL SHEETS	SHEET NO.
57	.	IROQUOIS	190	80
*(38-4)RS-2, (38-4)BR,BR1,BR3			CONTRACT NO. 66757	
ILLINOIS FED. AID PROJECT				