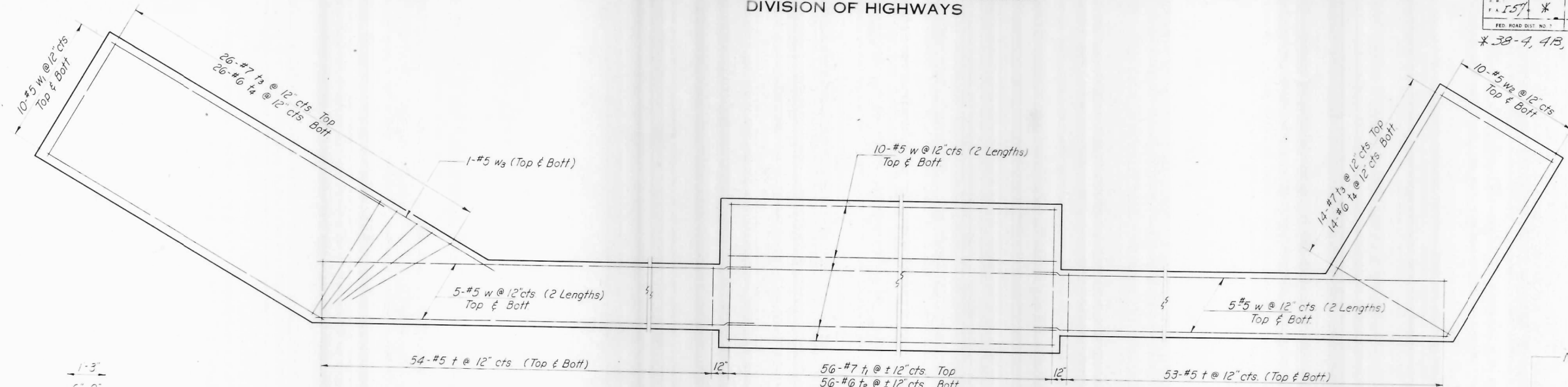


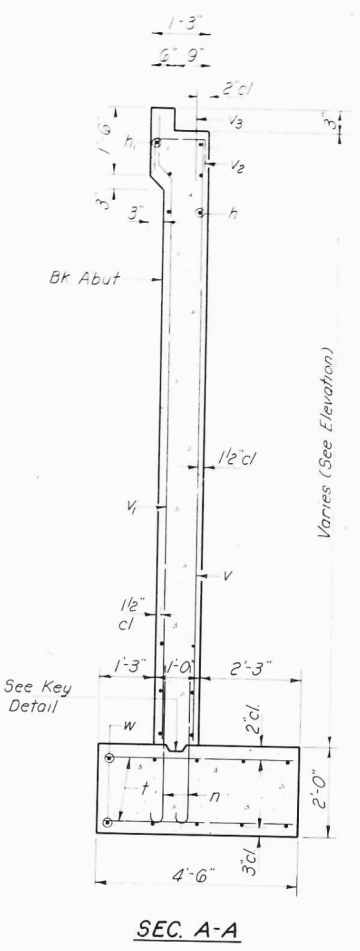
STATE OF ILLINOIS
DEPARTMENT OF PUBLIC WORKS & BUILDINGS
DIVISION OF HIGHWAYS

ROUTE NO.	SECTION	COUNTY	TOTAL SHEETS	SHEET NO.	SHEET NO. 6
157	*	IROQUOIS	82	26	6 SHEETS

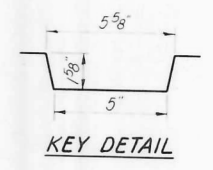
* 38-4, 4B, 4B-1, 4B-2, 4B-3



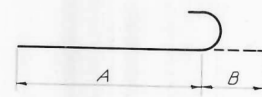
FOOTING PLAN
Showing Reinforcement



SEC. A-A



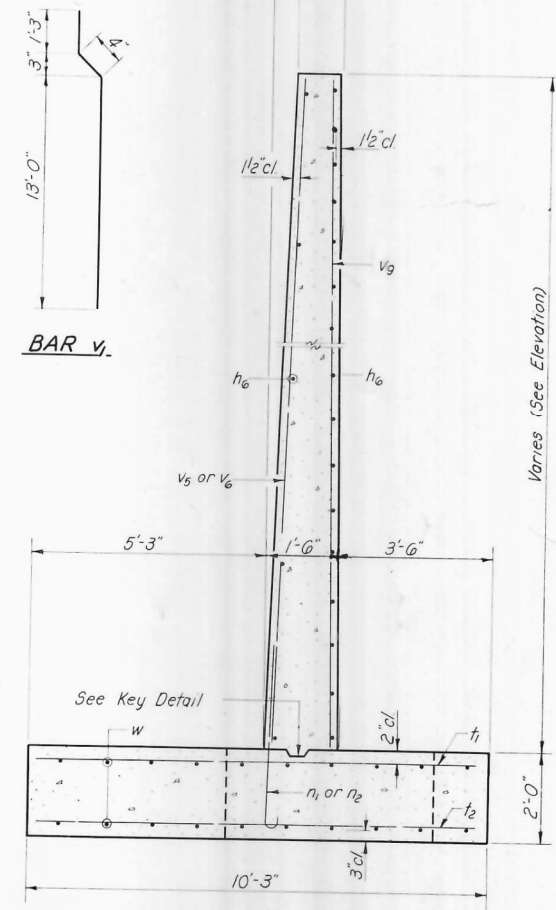
KEY DETAIL



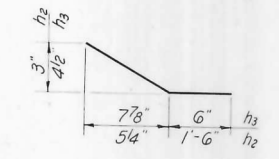
VALUE OF A & B

Bar	A	B
n	3'-9"	7"
n ₁	3'-9"	1'-1"
n ₂	5'-9"	10"

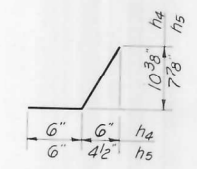
BAR v₂



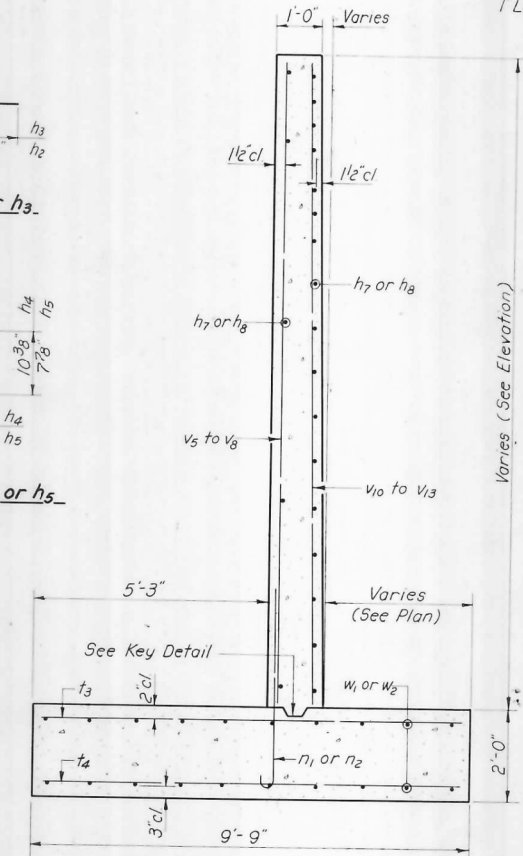
SEC. B-B



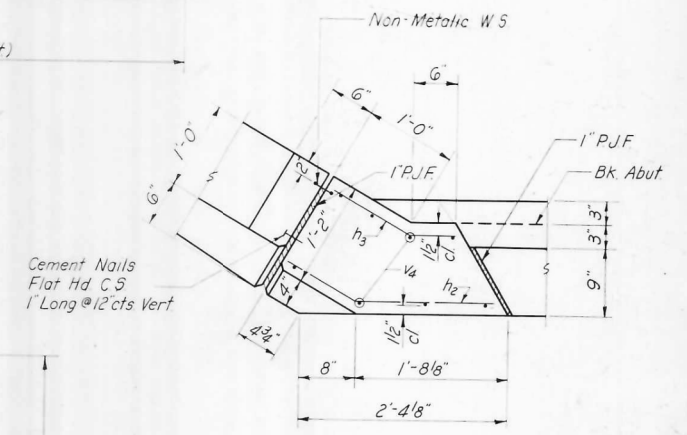
BAR h₂ or h₃



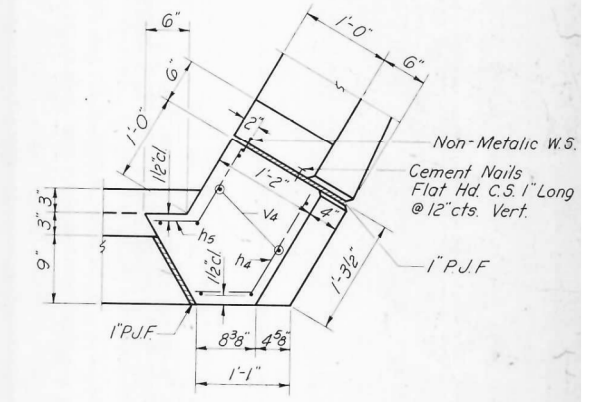
BAR h₄ or h₅



SEC. C-C



DETAIL A



DETAIL B

DETAILS
ABUTMENT & RETAINING WALL
No. & So. Bd. LANE BRIDGES
F.A.I. RT. 57 SEC. 38-4B
IROQUOIS COUNTY
STA. 348+54.5

DESIGNED	W. Heung	EXAMINED	W. Baumann	DATE	Dec. 10 1962
CHECKED	R. P.	PASSED	E. H. ...		
DRAWN	J. L. Armstrong	APPROVED	V. E. ...		
CHECKED	R. P.				

FILE NAME =	USER NAME = duncanbd	DESIGNED -	REVISED -	STATE OF ILLINOIS DEPARTMENT OF TRANSPORTATION	FOR INFORMATION ONLY				F.A.I. RT. =	SECTION	COUNTY	TOTAL SHEETS	SHEET NO.
et:\pw\work\p\dot\duncanbd\dms30308\ep05005-sh-t-F10.DGN	PLOT SCALE = 100.0000' / in.	DRAWN -	REVISED -		EXISTING SN 038-001/0012	57	.	IROQUOIS	190	82			
PLOT DATE = 6/2/2014	DATE -	CHECKED -	REVISED -		SCALE:	SHEET NO.	OF SHEETS	STA.	TO STA.	CONTRACT NO. 66757			
		DATE -	REVISED -							ILLINOIS FED. AID PROJECT			