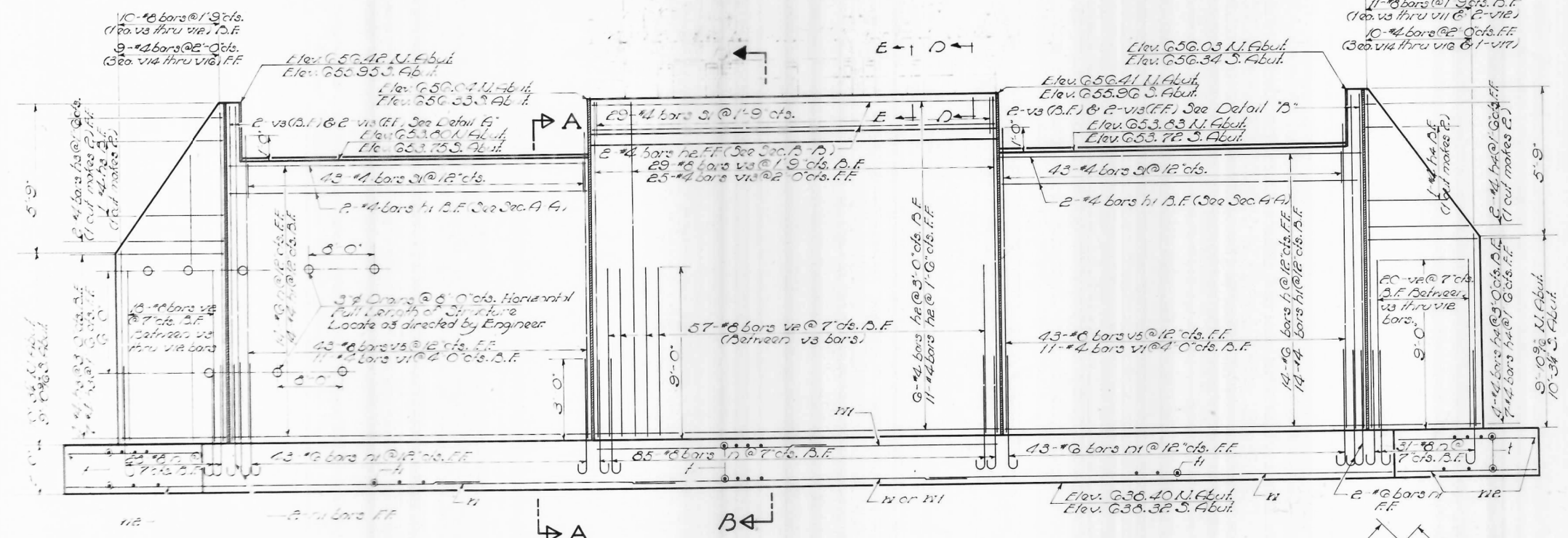
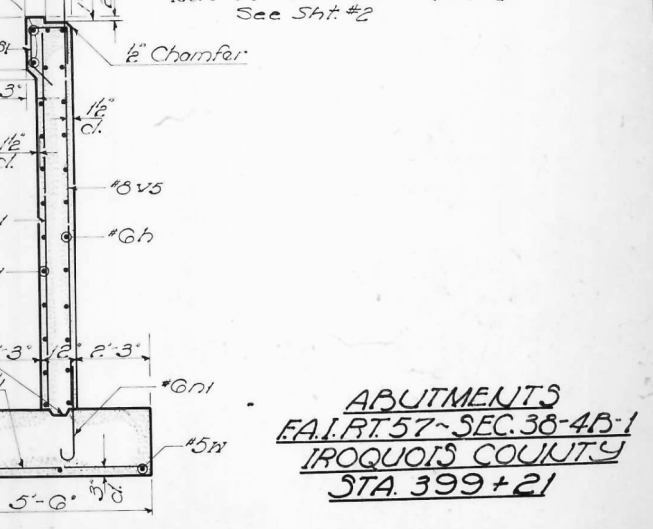
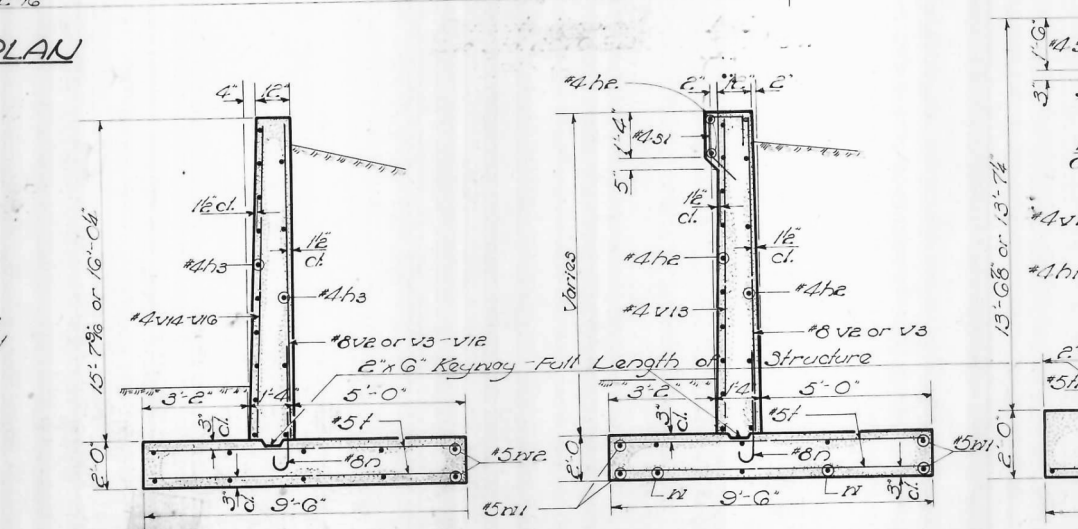
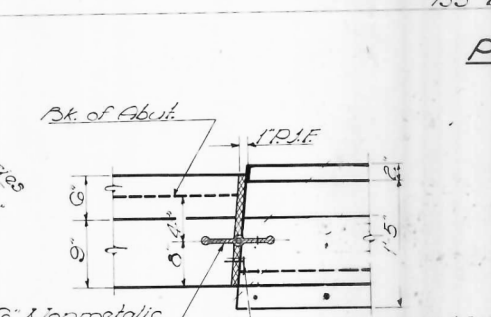
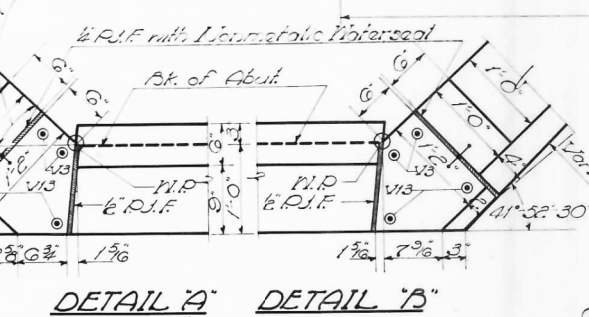
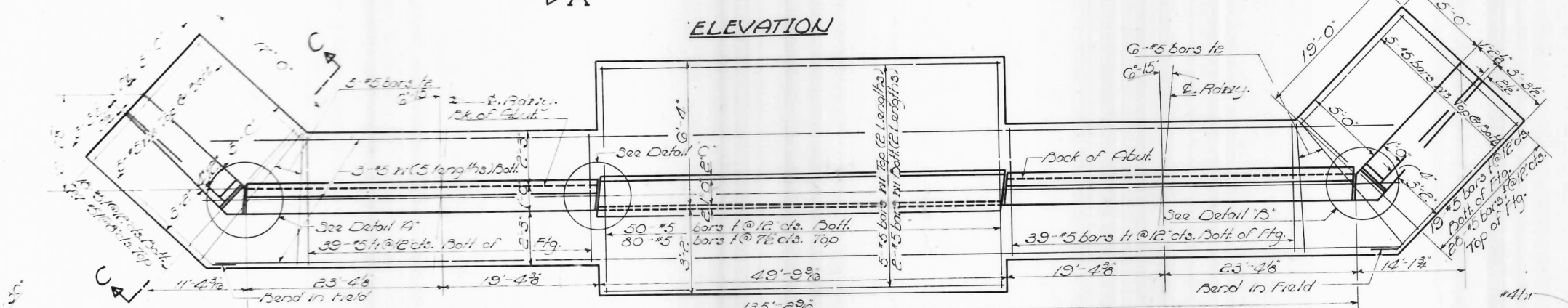


Note: For Sections D-D & E-E See Sections B-B & C-C respectively on Sheet E.



BILL OF MATERIAL

Bar	No.	Size	Length	Notes
h	58	#2	43'-0"	
h1	64	#4	43'-0"	
h2	38	#4	49'-6"	
h3	28	#4	16'-3"	
h4	28	#4	18'-3"	
n	290	#8	5'-9"	
n1	160	#6	5'-4"	
s1	230	#4	3'-9"	
f	444	#5	9'-0"	
h	156	#5	5'-0"	
h2	22	#5	6'-0"	
v1	44	#1	13'-0"	
v2	194	#6	8'-0"	
v3	70	#8	14'-9"	
v4	4	#8	14'-3"	
v5	176	#6	13'-6"	
v6	4	#8	12'-9"	
v7	4	#8	12'-3"	
v8	4	#8	11'-9"	
v9	4	#8	11'-0"	
v10	4	#8	10'-3"	
v11	4	#8	9'-9"	
v12	6	#8	9'-3"	
v13	58	#1	14'-9"	
v14	12	#1	13'-9"	
v15	12	#1	11'-3"	
v16	12	#1	9'-3"	
v17	2	#1	9'-0"	
w	30	#5	29'-0"	
w1	28	#5	25'-0"	
w2	20	#5	16'-6"	
w3	20	#5	21'-3"	
Class X Concrete			Cu. Yd.	363.4
Reinforcement Bars			L.B.	37,580



DESIGNED *D. Sponsler*
CHECKED *L. Lawrence Colburn*
DRAWN *Del nrl jacobbs*
CHECKED *C. J. C.*

EXAMINED *W. Baumann*
PASSED *E. Sherry*
APPROVED *V. E. Hoff*

Oct. 10 1962
ENGINEER OF BRIDGE AND TRAFFIC STRUCTURES
ENGINEER OF DESIGN
HIGHWAY ENGINEER

ABUTMENTS
F.A.I. RT. 57-SEC. 38-4B-1
IROQUOIS COUNTY
STA. 399+21