

NOTES

FOR DETAILS OF STEEL OR CAST GRATING NOT SHOWN SEE STANDARD 542546. EXISTING GRATING MAY BE REUSED IF IN GOOD CONDITION AND APPROVED BY THE ENGINEER.

ALL FRAMES SHALL BE GALVANIZED AND ANCHORED IN CONCRETE.

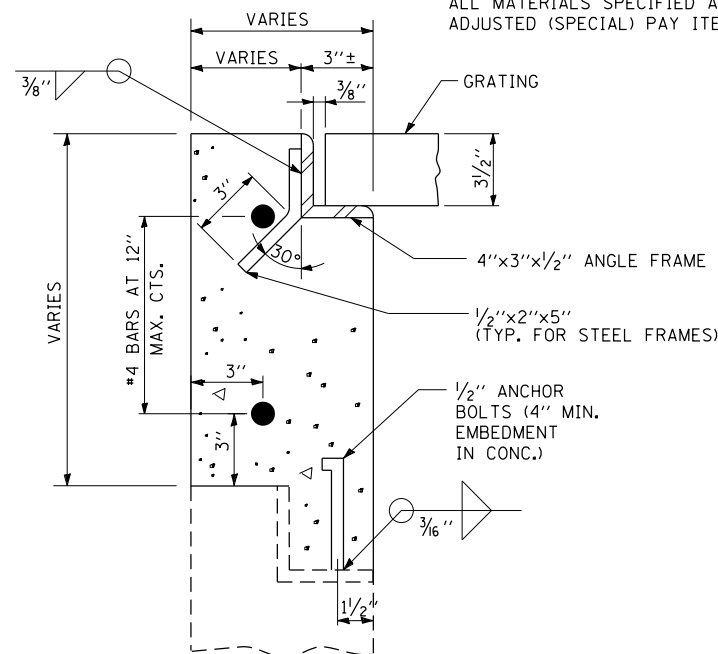
ALL ANCHOR BOLTS SHALL BE ACCORDING TO ARTICLE 1006.09.

IT SHALL BE THE CONTRACTOR'S RESPONSIBILITY TO VERIFY DIMENSIONS IN THE FIELD AND MAKE NECESSARY APPROVED ADJUSTMENTS PRIOR TO CONSTRUCTION OR ORDERING MATERIALS.

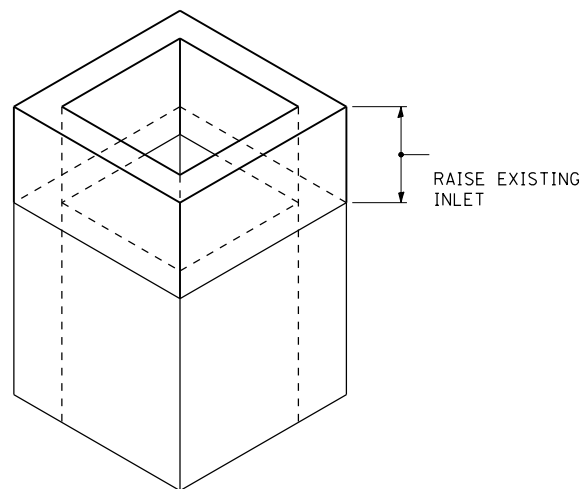
CLASS SI CONCRETE SHOULD BE USED THROUGHOUT.

SEE SPECIAL PROVISIONS FOR INLET BOXES TO BE ADJUSTED (SPECIAL)

ALL MATERIALS SPECIFIED ARE INCLUDED IN THE INLETS TO BE ADJUSTED (SPECIAL) PAY ITEM.

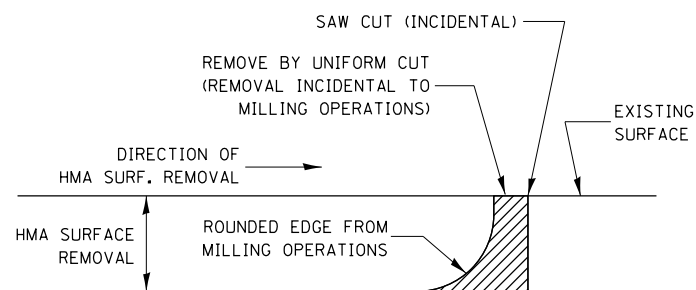


SECTION



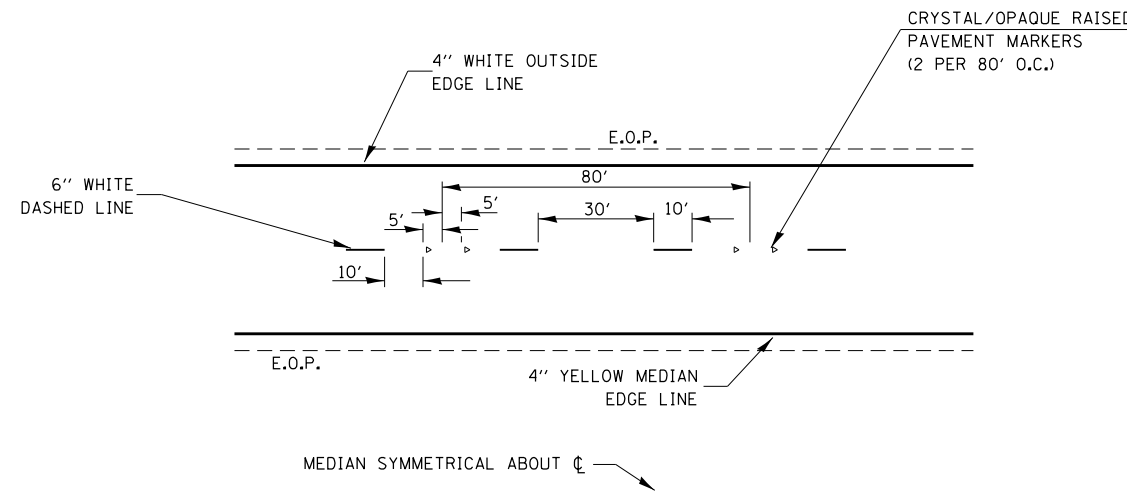
INLET BOX DETAIL

MEDIAN INLET BOX ADJUSTMENT DETAIL

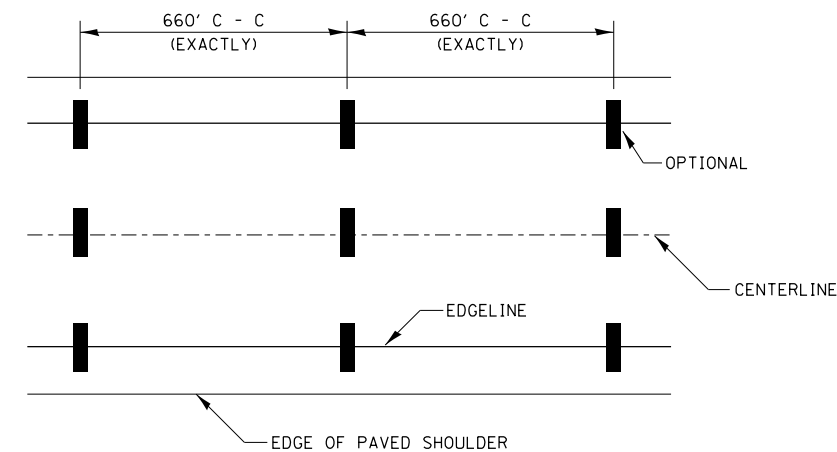


NOTE:
WHEN MILLING OPERATIONS PRODUCE A ROUNDED EDGE, THEN A SAW CUT SHALL BE USED TO MANUFACTURE A PERPENDICULAR EDGE AS SHOWN IN THE DETAIL. THE ENGINEER SHALL BE THE SOLE JUDGE CONCERNING THE USE OF THIS DETAIL

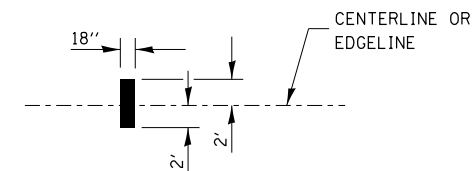
HMA DETAIL AT BUTT JOINTS



TYPICAL PAVEMENT MARKINGS



IT WILL BE NECESSARY TO HAVE A REPRESENTATIVE OF THE STATE POLICE PRESENT SO THAT THE ACCURACY OF MEASUREMENT CAN BE ATTESTED TO IN COURT.



AERIAL SPEED CHECK ZONES

FILE NAME =	USER NAME = duncanbd	DESIGNED -	REVISED -	STATE OF ILLINOIS DEPARTMENT OF TRANSPORTATION	DETAILS	F.A.I. RTE.	SECTION	COUNTY	TOTAL SHEETS	SHEET NO.
et:\pw\work\p1\dot\duncanbd\dms30308\ep05005-sh1-deta1s.dgn	DRAWN -	REVISED -	57			*	IROOUOIS	190	92	
PLOT SCALE = 100.0000' / in.	CHECKED -	REVISED -	* (38-4IRS-2, (38-4IBR,BR1,BR3			CONTRACT NO. 66757				
PLOT DATE = 6/2/2014	DATE -	REVISED -	FED. ROAD DIST. NO.			ILLINOIS	FED. AID PROJECT			