

EXIST. CURVE EXCL-2
 PI STA. = 926+97.19
 $\Delta = 0^\circ 22' 00''$ (RT)
 $D = 0^\circ 05' 30''$
 $R = 62,508.71'$
 $T = 200.01'$
 $L = 400.01'$
 $E = 0.32'$
 $e = \text{-----}$
 $T.R. = \text{-----}$
 $S.E. RUN = \text{-----}$
 $P.C. STA. = 924+97.18$
 $P.T. STA. = 928+97.19$

MATCH LINE STA. 923+00

MATCH LINE STA. 938+00

PC Sta 924+97.18

PI Sta 926+97.19

PT Sta 928+97.19

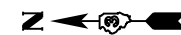
2600' AVE N
+15'

925+00

930+00

935+00

F.E.
+07'



MATCH LINE STA. 938+00

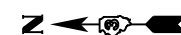
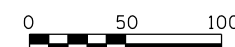
MATCH LINE STA. 953+00

940+00

945+00

950+00

F.E.
+15'



MATCH LINE STA. 953+00

MATCH LINE STA. 968+00

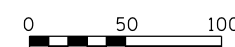
SN 006-0086
STA. 954+58

955+00

960+00

965+00

F.E.
+19'



FILE NAME =	USER NAME = duncanbd	DESIGNED -	REVISED -
c:\pwwork\pwwork\duncanbd\0304146\036634-sht-plan.dgn		DRAWN -	REVISED -
	PLOT SCALE = 100.0000' / in.	CHECKED -	REVISED -
	PLOT DATE = 6/6/2014	DATE -	REVISED -

STATE OF ILLINOIS
DEPARTMENT OF TRANSPORTATION

PLAN VIEW

SCALE: SHEET NO. OF SHEETS STA. TO STA.

F.A.P. RTE.	SECTION	COUNTY	TOTAL SHEETS	SHEET NO.
646	(103.104)RS-6	BUREAU	28	14
CONTRACT NO. 66C34				
ILLINOIS FED. AID PROJECT				