

STATE OF ILLINOIS
DEPARTMENT OF TRANSPORTATION
DIVISION OF HIGHWAYS

**PROPOSED
HIGHWAY PLANS**

FAP 68 ROUTE IL 23
SECTION (5&6)RS-2

3P MILLING AND RESURFACING
LASALLE COUNTY

C-93-002-13

IL 23 NORTH OF CH5 (RICHARDS ROAD) TO SOUTH OF BRONSON ST. IN STREATOR

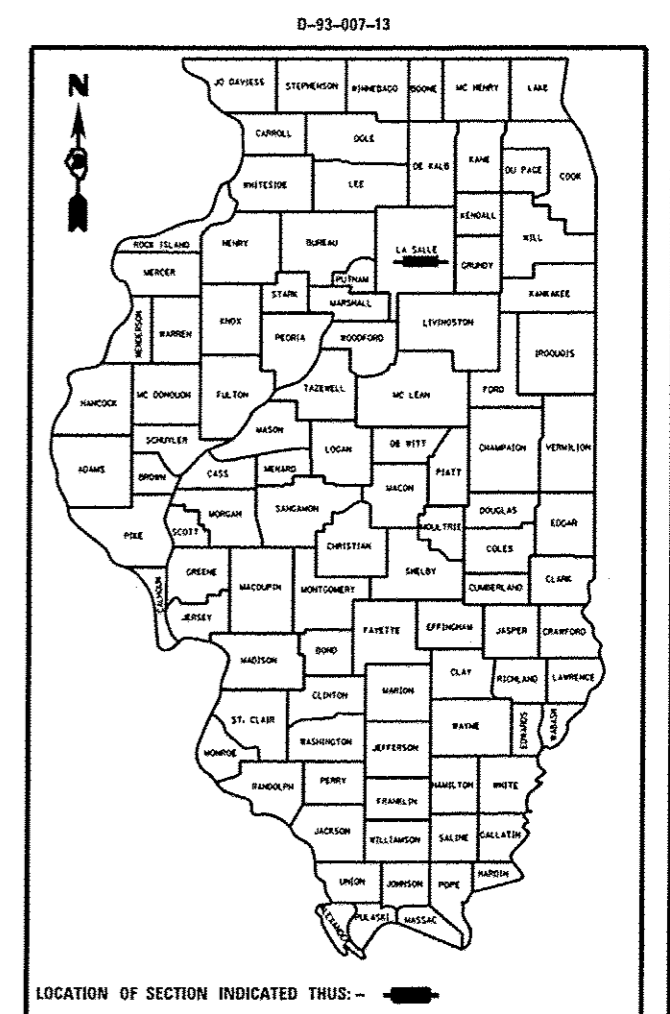
F.A.P. RTE.	SECTION	COUNTY	TOTAL SHEETS	SHEET NO.
68	5&6RS-2	LASALLE	41	1
		ILLINOIS	CONTRACT NO. 66C48	

INDEX OF SHEETS

- 1 COVER SHEET
- 2 GENERAL NOTES, STANDARDS
- 3-5 SUMMARY OF QUANTITIES
- 6-9 TYPICAL SECTIONS
- 10-12 SCHEDULES
- 13-33 PLAN SHEET
- 34-41 CADD DETAILS

STANDARDS

- 000001-06 STANDARD SYMBOLS, ABBREVIATIONS AND PATTERNS
- 001006 DECIMAL OF AN INCH AND OF A FOOT
- 406201-01 MAILBOX TURNOUT
- 424001-07 PERPENDICULAR CURB RAMPS FOR SIDEWALKS
- 424006-01 DIAGONAL CURB RAMPS FOR SIDEWALKS
- 424011-01 CORNER PARALLEL CURB RAMPS FOR SIDEWALKS
- 424016-01 MID-BLOCK CURB RAMPS FOR SIDEWALKS
- 424021-02 DEPRESSED CORNER FOR SIDEWALKS
- 424026-01 ENTRANCE/ ALLEY PEDESTRIAN CROSSINGS
- 606001-05 CONCRETE CURB TYPE B AND COMBINATION CONCRETE CURB AND GUTTER
- 701421-06 LANE CLOSURE, MULTILANE, DAY OPERATIONS ONLY, FOR SPEEDS > 45 MPH TO 55 MPH
- 701602-07 URBAN LANE CLOSURE, MULTILANE, 2W WITH BIDIRECTIONAL LEFT TURN LANE
- 701606-09 URBAN LANE CLOSURE, MULTILANE, 2W WITH MOUNTABLE MEDIAN
- 701701-09 URBAN LANE CLOSURE, MULTILANE INTERSECTION
- 701801-05 SIDEWALK CORNER OR CROSSWALK CLOSURE
- 701901-03 TRAFFIC CONTROL DEVICES
- 780001-04 TYPICAL PAVEMENT MARKINGS
- 781001-03 TYPICAL APPLICATIONS RAISED REFLECTIVE PAVEMENT MARKERS
- 782001 PRISMATIC CURB REFLECTORS
- 886001-01 DETECTOR LOOP INSTALLATIONS
- 886006-01 TYPICAL LAYOUTS FOR DETECTION LOOPS



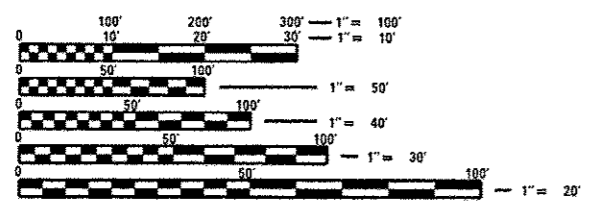
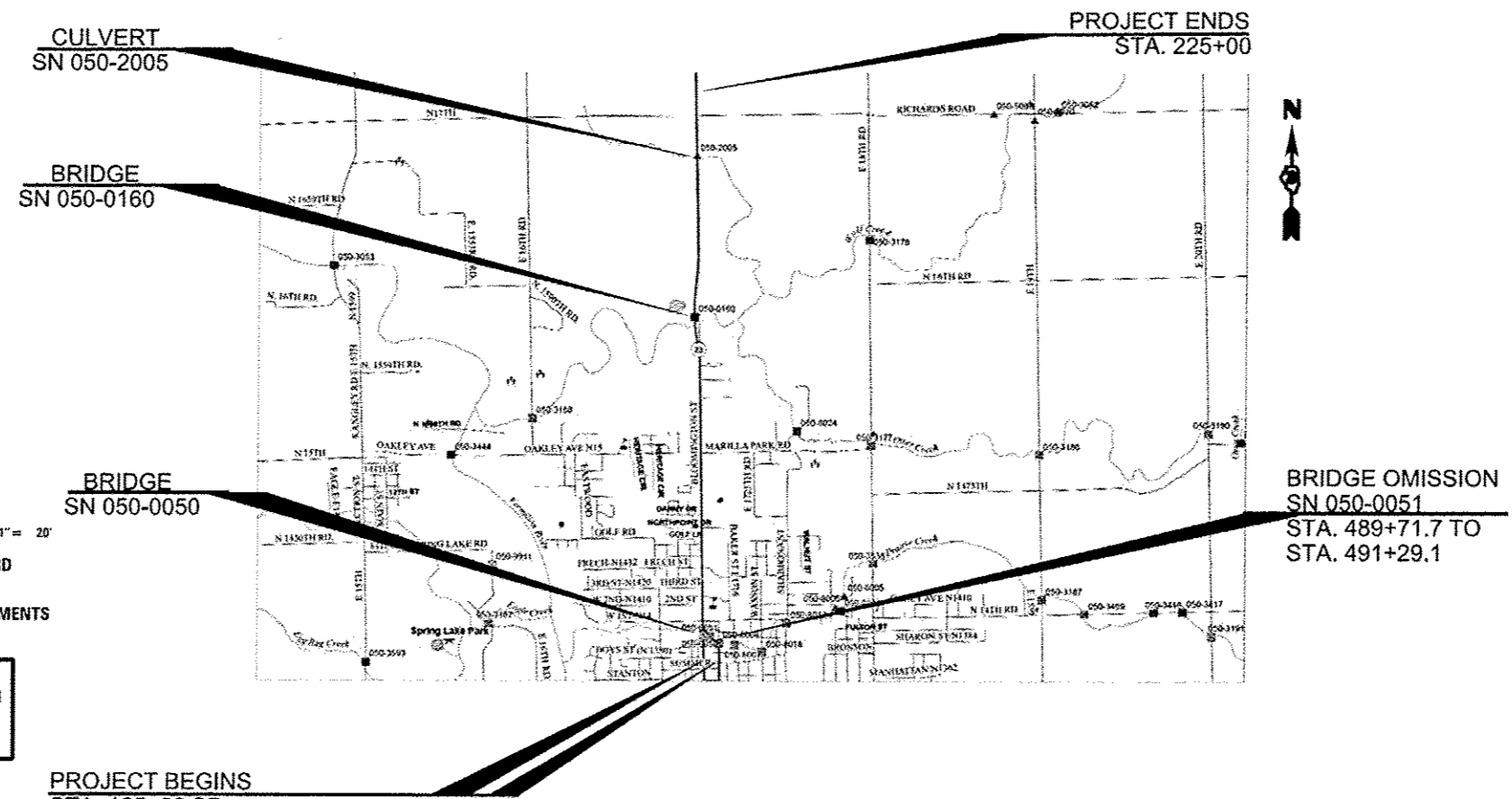
FUNCTIONAL CLASSIFICATION
OTHER PRINCIPAL ARTERIAL
2013 ADT = 20,000
PV = 96.9% SU = 1.6% MU = 1.5%

STATE OF ILLINOIS
DEPARTMENT OF TRANSPORTATION
DIVISION OF HIGHWAYS

SUBMITTED June 6 2014
Paul Coetzee, P.E.
DEPUTY DIRECTOR OF HIGHWAYS, REGION ENGINEER

June 27 2014
John D. Baranolo, P.E.
ENGINEER OF DESIGN AND ENVIRONMENT

June 27 2014
Omer Osman, P.E.
DIRECTOR OF HIGHWAYS, CHIEF ENGINEER



FULL SIZE PLANS HAVE BEEN PREPARED USING STANDARD ENGINEERING SCALES. REDUCED SIZED PLANS WILL NOT CONFORM TO STANDARD SCALES. IN MAKING MEASUREMENTS ON REDUCED PLANS, THE ABOVE SCALES MAY BE USED.

J.U.L.I.E.
JOINT UTILITY LOCATION INFORMATION FOR EXCAVATION
1-800-892-0123
OR 811

PROJECT ENGINEER: JOE KANNEL, P.E.
UNIT CHIEF: SCOTT FERGUSON, P.E.
DISTRICT NO. (815)-434-6131
CONTRACT NO. 66C48

PROJECT BEGINS
STA. 165+86 SB
STA. 500+72 NB

GROSS LENGTH = 20866 FT. = 3.95 MILE
NET LENGTH = 20709 FT. = 3.92 MILE

PRINTED BY THE AUTHORITY
OF THE STATE OF ILLINOIS