

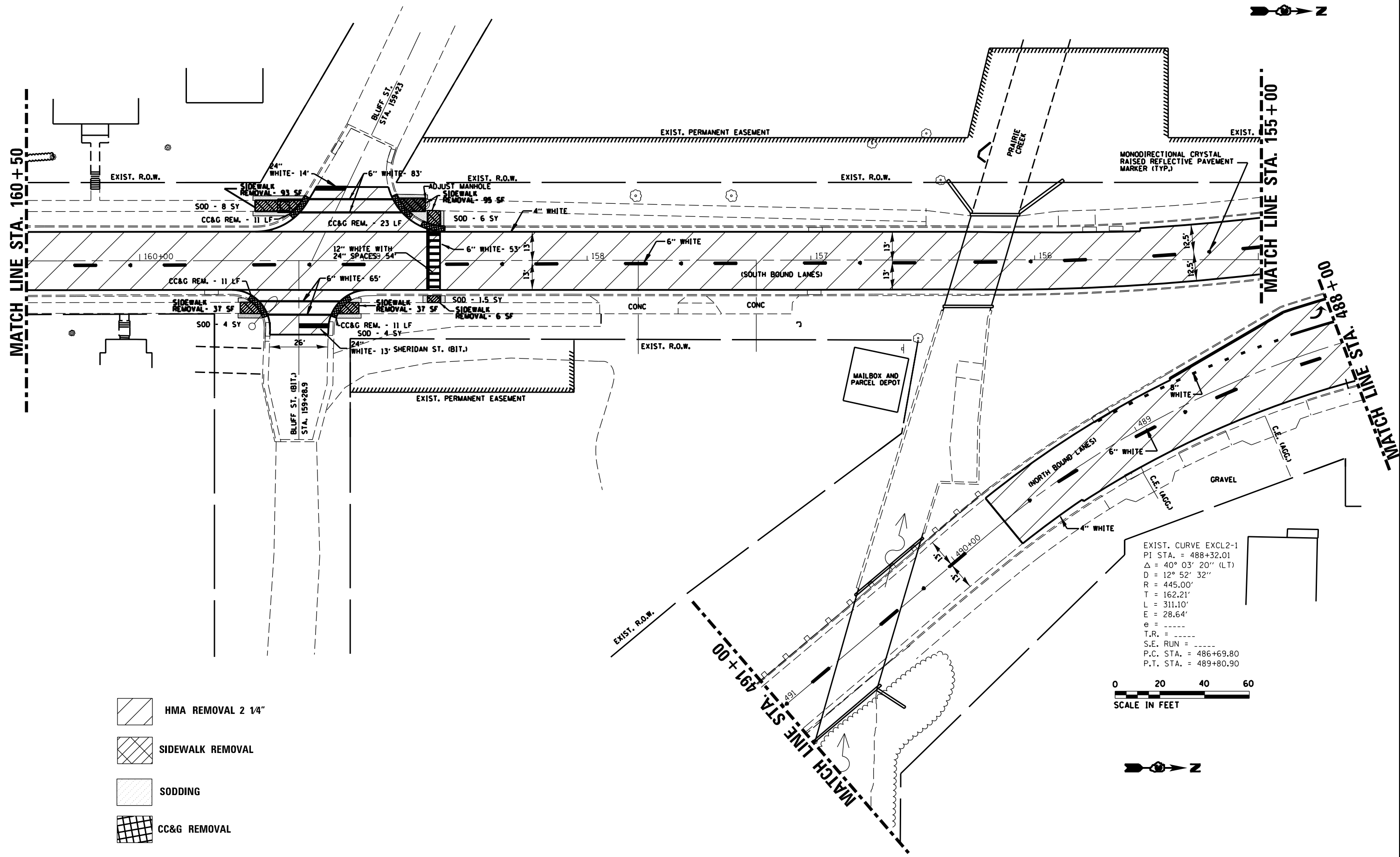


MATCH LINE STA. 160+50

MATCH LINE STA. 155+00

MATCH LINE STA. 488+00

MATCH LINE STA. 491+00



- HMA REMOVAL 2 1/4"
- SIDEWALK REMOVAL
- SODDING
- CC&G REMOVAL

EXIST. CURVE EXCL2-1
 PI STA. = 488+32.01
 $\Delta = 40^\circ 03' 20''$ (LT)
 $D = 12^\circ 52' 32''$
 $R = 445.00'$
 $T = 162.21'$
 $L = 311.10'$
 $E = 28.64'$
 $e =$
 $T.R. =$
 $S.E. RUN =$
 $P.C. STA. = 486+69.80$
 $P.T. STA. = 489+80.90$



FILE NAME =	USER NAME = mcfaddenka	DESIGNED -	REVISED -	STATE OF ILLINOIS DEPARTMENT OF TRANSPORTATION	PLAN SHEET			F.A.P. RTE.	SECTION	COUNTY	TOTAL SHEETS	SHEET NO.
Default	e:\pwork\pwork\mcfaddenka\0306852\366C48-shr-plan.dgn	DRAWN -	REVISED -		STA. 160+50 TO STA. 155+00 STA. 491+00 TO STA. 488+00			68	(5&6) RS-2	LASALLE	41	14
	PLOT SCALE = 40.0000' / in.	CHECKED -	REVISED -		SCALE:	SHEET	OF SHEETS	STA.	TO STA.	CONTRACT NO. 66C48		
	PLOT DATE = 6/6/2014	DATE -	REVISED -		ILLINOIS FED. AID PROJECT							