

F.A.I. RTE.	SECTION	COUNTY	TOTAL SHEETS	SHEET NO.
55	(53-4,4(1),3(1),3,2)I-4	LIVINGSTON	8	1
		ILLINOIS	CONTRACT NO. 66D48	

**INDEX OF SHEETS**

1	COVER SHEET
2	GENERAL NOTES
3-4	SUMMARY OF QUANTITIES
5	TYPICAL SECTIONS
6	SCHEDULES
7-8	DETAILS

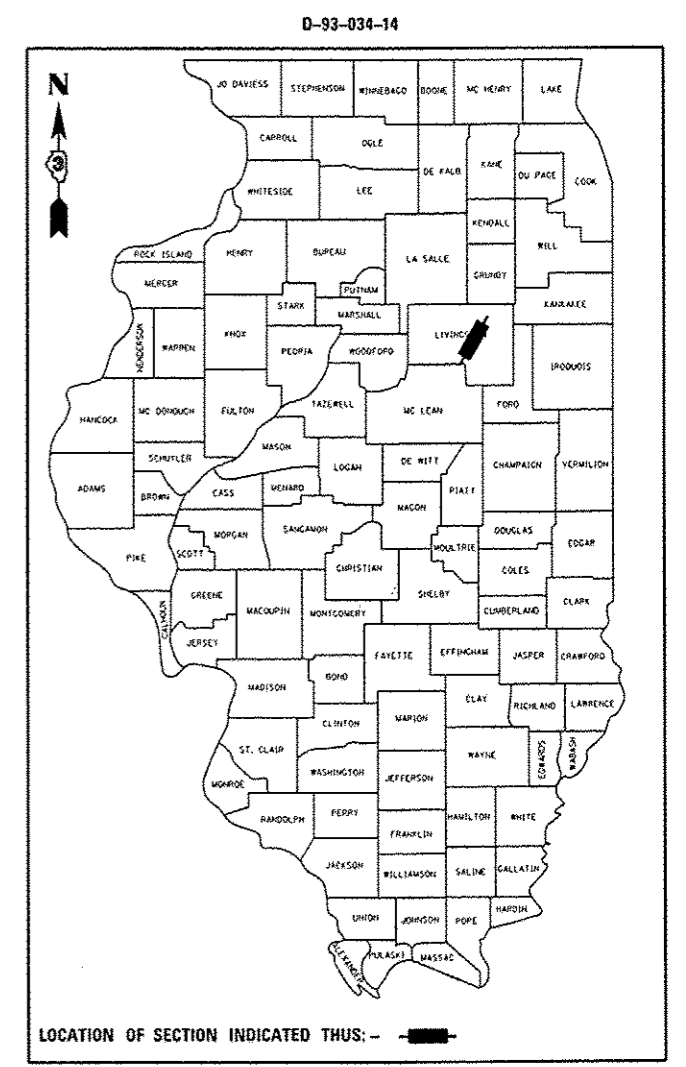
**STATE OF ILLINOIS**  
**DEPARTMENT OF TRANSPORTATION**  
**DIVISION OF HIGHWAYS**

**PROPOSED**  
**HIGHWAY PLANS**

**FAI ROUTE 55 (I-55)**  
**SECTION (53-4,4(1),3(1),3,2)I-4**

**MICROSURFACING CENTERLINE**  
**LIVINGSTON COUNTY**

C-93-056-14



**STATION EQUATION:**  
**477 + 82.67BK = 470 + 23.55AH**

**END PROJECT**  
**STA 655 + 49.51**

**SN 053-0112**  
**STA 391 + 32.2**

**SN 053-0138**  
**STA 334 + 98.51**

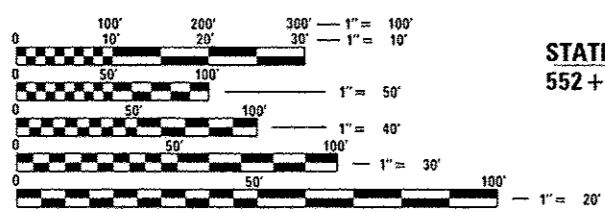
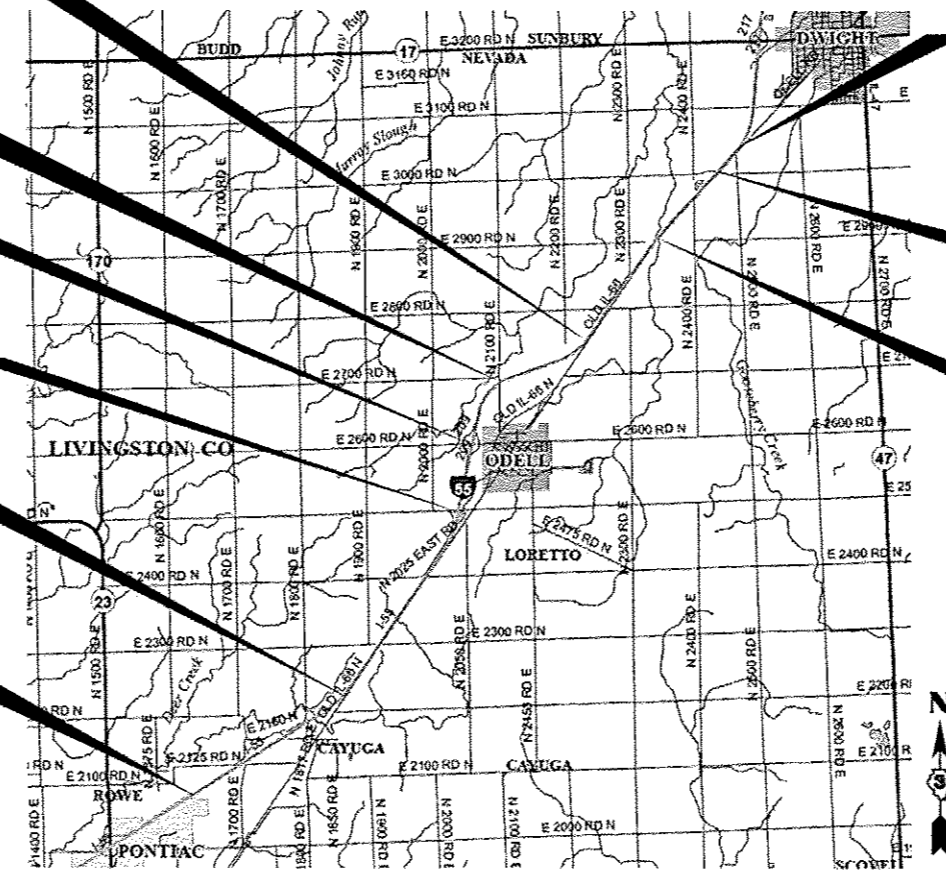
**SN 053-0141**  
**STA 635 + 00**

**SN 053-0113**  
**STA 280 + 46.06**

**SN 053-0140 & 053-0139**  
**STA 562 + 15.42**  
**OMISSION**  
**STA 561 + 69.71 TO STA 562 + 61.13**

**STATION EQUATION:**  
**552 + 08.35BK = 121 + 28.60AH**

**BEGIN PROJECT**  
**STA 406 + 64.73**



FULL SIZE PLANS HAVE BEEN PREPARED USING STANDARD ENGINEERING SCALES. REDUCED SIZED PLANS WILL NOT CONFORM TO STANDARD SCALES. IN MAKING MEASUREMENTS ON REDUCED PLANS, THE ABOVE SCALES MAY BE USED.

J.U.L.I.E.  
 JOINT UTILITY LOCATION INFORMATION FOR EXCAVATION  
 1-800-892-0123  
 OR 811

**PROJECT ENGINEER: JOE KANNEL, PE**  
**UNIT CHIEF: MICHELE LINDEMANN, PE**

**CONTRACT NO. 66D48**

GROSS LENGTH = 68632.23 FT. = 12.999 MILE  
 NET LENGTH = 68723.65 FT. = 13.016 MILE

**INTERSTATE**  
**2013 ADT = 19,000**  
**P.V. = 68.8%**  
**S.U. = 3.8%**  
**M.U. = 27.4%**

STATE OF ILLINOIS  
 DEPARTMENT OF TRANSPORTATION  
 DIVISION OF HIGHWAYS

SUBMITTED May 9 20 14  
Paul Costa, P.E.  
 DEPUTY DIRECTOR OF HIGHWAYS, REGION ENGINEER

June 27 20 14  
John D. Baranzelli, P.E.  
 acting ENGINEER OF DESIGN AND ENVIRONMENT

June 27 20 14  
Omer Osman, P.E.  
 DIRECTOR OF HIGHWAYS, CHIEF ENGINEER

**PRINTED BY THE AUTHORITY**  
**OF THE STATE OF ILLINOIS**