

**STATE OF ILLINOIS**  
**DEPARTMENT OF TRANSPORTATION**  
**DIVISION OF HIGHWAYS**  
**PROPOSED**  
**HIGHWAY PLANS**

| F.A.P. RTE. | SECTION   | COUNTY  | TOTAL SHEETS       | SHEET NO. |
|-------------|-----------|---------|--------------------|-----------|
| 591         | (651)RS-1 | KENDALL | 13                 | 1         |
| ILLINOIS    |           |         | CONTRACT NO. 66D61 |           |

**INDEX OF SHEETS**

- 1 COVER SHEET
- 2 GENERAL NOTES
- 3 - 5 SUMMARY OF QUANTITIES
- 6 TYPICAL SECTIONS
- 7 - 8 SCHEDULE OF QUANTITIES
- 9 - 11 PLAN VIEWS
- 12 - 13 DETAILS

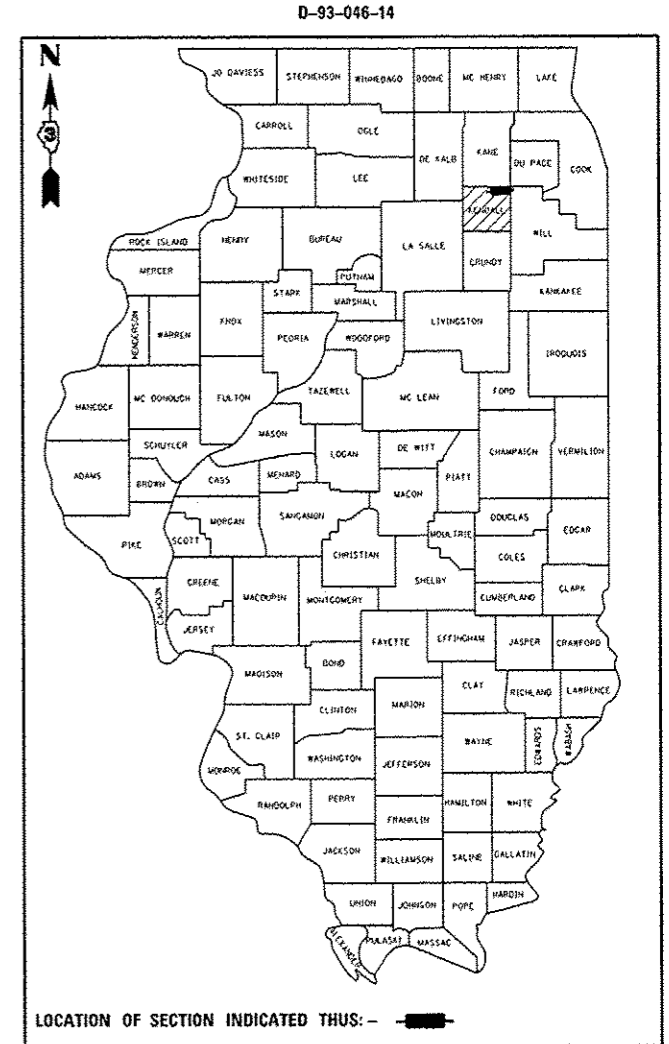
LIST OF ILLINOIS DOT HIGHWAY STANDARDS

- 000001-06 STANDARD SYMBOLS, ABBREVIATIONS AND PATTERNS
- 424001-07 PERPENDICULAR CURB RAMPS FOR SIDEWALKS
- 424006-01 DIAGONAL CURB RAMPS FOR SIDEWALKS
- 424011-01 CORNER PARALLEL CURB RAMPS FOR SIDEWALKS
- 424016-01 MID-BLOCK CURB RAMPS FOR SIDEWALKS
- 424021-02 DEPRESSED CORNER FOR SIDEWALKS
- 606001-05 CONCRETE CURB TYPE B AND COMBINATION CONCRETE CURB AND GUTTER
- 701606-09 URBAN LANE CLOSURE, MULTILANE, 2W WITH MOUNTABLE MEDIAN
- 701901-03 TRAFFIC CONTROL DEVICES
- 781001-03 TYPICAL APPLICATIONS RAISED REFLECTIVE PAVEMENT MARKERS

**FAP ROUTE 591 (US 34)**  
**SECTION (651)RS-1**

**3P MILLING AND RESURFACING**  
**KENDALL COUNTY**

C-93-070-14



**OTHER ARTERIAL (URBAN)**  
 2013 ADT = 12400  
 PV=97.6% SU=1.2% MU=1.2%

MICROFILMED \_\_\_\_\_  
 REEL NUMBER \_\_\_\_\_  
 AWARDED \_\_\_\_\_  
 RESIDENT ENGINEER \_\_\_\_\_  
 AS BUILT CHANGES WERE MADE  
 ON THE FOLLOWING SHEETS \_\_\_\_\_



FULL SIZE PLANS HAVE BEEN PREPARED USING STANDARD ENGINEERING SCALES. REDUCED SIZED PLANS WILL NOT CONFORM TO STANDARD SCALES. IN MAKING MEASUREMENTS ON REDUCED PLANS, THE ABOVE SCALES MAY BE USED.

J.U.L.I.E.  
 JOINT UTILITY LOCATION INFORMATION FOR EXCAVATION  
 1-800-892-0123  
 OR 811



**BEGIN IMPROVEMENT**  
**STA. 129 + 32**

**END IMPROVEMENT**  
**STA. 153 + 57**

**PROJECT ENGINEER: CRAIG REED, P.E.**  
**UNIT CHIEF: BRAD DUNCAN, P.E.**  
 DISTRICT 3 NO. (815) 434-6131  
**CONTRACT NO. 66D61**

GROSS & NET LENGTH = 2425 FT. = 0.46 MILE

STATE OF ILLINOIS  
 DEPARTMENT OF TRANSPORTATION  
 DIVISION OF HIGHWAYS

SUBMITTED June 6 20 14  
Paul Coete D.B.  
 DEPUTY DIRECTOR OF HIGHWAYS, REGION ENGINEER

June 27 20 14  
John D. Baranzelli PE  
 acting ENGINEER OF DESIGN AND ENVIRONMENT

June 27 20 14  
Amer Osman PE  
 DIRECTOR OF HIGHWAYS, CHIEF ENGINEER

**PRINTED BY THE AUTHORITY**  
**OF THE STATE OF ILLINOIS**

GENERAL NOTES

THE THICKNESS OF HMA SHOWN ON THE PLANS IS THE NOMINAL THICKNESS. DEVIATIONS FROM THE NOMINAL THICKNESS WILL BE PERMITTED WHEN SUCH DEVIATIONS OCCUR DUE TO IRREGULARITIES IN THE EXISTING SURFACE OR BASE ON WHICH THE HMA IS PLACED.

THE HMA SURFACE OF ALL MAILBOX TURNOUTS, PRIVATE ENTRANCES, COMMERCIAL ENTRANCES, AND SIDE ROADS SHALL BE MADE NEATLY, IN A WORKMANLIKE MANNER, AND SHALL ACCURATELY CONFORM TO THE SHAPES AND DIMENSIONS SHOWN ON THE PLAN DETAILS. IF REQUIRED BY THE ENGINEER, THE CONTRACTOR SHALL SAW CUT THE HMA SURFACE TO CONFORM TO THE SHAPES AND DIMENSIONS SHOWN ON THE PLAN DETAILS. THIS WORK WILL BE INCLUDED IN THE COST OF THE HMA SURFACE.

THE ENGINEER WILL BE THE SOLE JUDGE CONCERNING CURING TIME FOR THE VARIOUS HMA LIFTS.

ALL EXCAVATED MATERIAL, WHICH INCLUDES DIGGING OR GRADING OF ANY SOIL OR FILL MATERIAL, WITH THE EXCEPTION OF AGGREGATE FILLS, MUST BE INCORPORATED WITHIN THE IDOT RIGHT OF WAY DUE TO ENVIRONMENTAL DOCUMENTATION REQUIREMENTS.

DETECTABLE WARNING SURFACES SHALL EXTEND 2.0 FT MINIMUM IN THE DIRECTION OF PEDESTRIAN TRAVEL. AT CURB RAMPS AND BLENDED TRANSITIONS, DETECTABLE WARNING SURFACES SHALL EXTEND THE FULL WIDTH OF THE RAMP RUN (EXCLUDING ANY FLARES) OR BLENDED TRANSITIONS. SOME DETECTABLE WARNING PRODUCTS REQUIRE A CONCRETE BORDER FOR PROPER INSTALLATION. THE CONCRETE BORDER SHALL NOT EXCEED 2 INCHES.

ON EXISTING PAVEMENT WHICH MAY BE SUPERELEVATED, THE NEW HMA PAVEMENT SHALL BE BUILT WITH THE SAME SUPERELEVATION UNLESS NEW SUPERELEVATION RATES ARE GIVEN ON THE PLANS.

ANY REFERENCE TO A STANDARD IN THESE PLANS SHALL BE INTERPRETED TO MEAN THE EDITION AS INDICATED BY THE SUBNUMBER SHOWN IN THE LIST OF STANDARDS OR THE COPY INCLUDED IN THESE PLANS.

THE FOLLOWING RATES OF APPLICATION HAVE BEEN USED IN CALCULATING PLAN QUANTITIES:

|                              |        |                           |
|------------------------------|--------|---------------------------|
| HMA RESURFACING              | 112    | LBS / SQ YD / IN          |
| SHORT TERM PAVEMENT MARKING  | 10     | FT /100 FT OF APPLICATION |
| MIX FOR CRACKS, JTS & FLGWYS | 0.0003 | TONS / SQ YD              |
| LEVEL BINDER (HAND METHOD)   | 0.0005 | TONS / SQ YD              |
| SUPPLEMENTAL WATERING        | 3      | GAL / SQ YD / APPLICATION |

THE CONTRACTOR SHALL CONTACT JULIE AT LEAST 48 HOURS PRIOR TO EXCAVATION TO DETERMINE WHICH UTILITIES ARE IN THE AREA.

STATE OF ILLINOIS  
DEPARTMENT OF TRANSPORTATION  
DISTRICT THREE

PREPARED BY: *D. Bonic*  
DISTRICT STUDIES & PLANS ENGINEER

DATE: 6-6-14

EXAMINED BY: *Herbert G...*  
DISTRICT CONSTRUCTION ENGINEER

*Wayne L. Phillips*  
DISTRICT MATERIALS ENGINEER

*Samuel A. H...*  
DISTRICT OPERATIONS ENGINEER

|                                      |                             |            |           |   |                      |       |    |                |           |         |                           |              |
|--------------------------------------|-----------------------------|------------|-----------|---|----------------------|-------|----|----------------|-----------|---------|---------------------------|--------------|
| FILE NAME *                          | USER NAME * duncanbd        | DESIGNED - | REVISED - | <b>STATE OF ILLINOIS<br/>DEPARTMENT OF TRANSPORTATION</b> | <b>GENERAL NOTES</b> |       |    | F.A.P.<br>RTE. | SECTION   | COUNTY  | TOTAL<br>SHEETS           | SHEET<br>NO. |
| cd:\p_wrk\psidot\duncanbd\0377300\03 | DDGI-shr-cover.dgn          | DRAWN -    | REVISED - |   |                      |       |    | 591            | (651RS-1) | KENDALL | 13                        | 2            |
|                                      | PLOT SCALE * 100.0000 / in. | CHECKED -  | REVISED - |   | SCALE:               | SHEET | OF | SHEETS         | STA.      | TO STA. | ILLINOIS FED. AID PROJECT |              |
|                                      | PLOT DATE * 6/3/2014        | DATE -     | REVISED - |   |                      |       |    |                |           |         |                           |              |

| CODE NO. | ITEM  | UNIT  | TOTAL QUANTITY | CONSTR. CODE       |       |
|----------|---|-------|----------------|--------------------|-------|
|          |   |       |                | 100% STATE ROADWAY |       |
|          |   |       |                | 0005               | URBAN |
| 25000400 | NITROGEN FERTILIZER NUTRIENT                    | POUND | 1              |                    | 1     |
| 25000500 | PHOSPHORUS FERTILIZER NUTRIENT                  | POUND | 1              |                    | 1     |
| 25000600 | POTASSIUM FERTILIZER NUTRIENT                   | POUND | 1              |                    | 1     |
| 25200110 | SODDING, SALT TOLERANT                          | SQ YD | 53             |                    | 53    |
| 25200200 | SUPPLEMENTAL WATERING                           | UNIT  | 1              |                    | 1     |
| 40600400 | MIXTURE FOR CRACKS, JOINTS, AND FLANGEWAYS      | TON   | 4              |                    | 4     |
| 40600537 | LEVELING BINDER (HAND METHOD), IL-9.5FG, N70    | TON   | 6              |                    | 6     |
| 40600637 | LEVELING BINDER (MACHINE METHOD), IL-9.5FG, N70 | TON   | 505            |                    | 505   |
| 40600990 | TEMPORARY RAMP                                  | SQ YD | 220            |                    | 220   |
| 40603340 | HOT-MIX ASPHALT SURFACE COURSE, MIX "D", N70    | TON   | 1010           |                    | 1010  |
| 40800050 | INCIDENTAL HOT-MIX ASPHALT SURFACING            | TON   | 66             |                    | 66    |
| 42400100 | PORTLAND CEMENT CONCRETE SIDEWALK 4 INCH        | SQ FT | 1296           |                    | 1296  |
| 42400800 | DETECTABLE WARNINGS                             | SQ FT | 292            |                    | 292   |
| 44000158 | HOT-MIX ASPHALT SURFACE REMOVAL, 2 1/4"         | SQ YD | 12542          |                    | 12542 |

△ SPECIALTY ITEMS

|  |                      |            |           |   |                              |           |    |        |                           |         |        |              |           |    |   |
|--|----------------------|------------|-----------|---|------------------------------|-----------|----|--------|---------------------------|---------|--------|--------------|-----------|----|---|
| FILE NAME :  | USER NAME : duncanbd | DESIGNED - | REVISED - | <b>STATE OF ILLINOIS<br/>DEPARTMENT OF TRANSPORTATION</b> | <b>SUMMARY OF QUANTITIES</b> |           |    |        | F.A.P. RTE.               | SECTION | COUNTY | TOTAL SHEETS | SHEET NO. |    |   |
| or:\pwork\psidot\duncanbd\0377308\038061-ent-500.dgn |                      | DRAWN -    | REVISED - |   | SCALE:                       | SHEET NO. | OF | SHEETS | STA.                      | TO STA. | 591    | (65)RS-1     | KENDALL   | 13 | 3 |
| PLOT SCALE : 100.0000 ' / ' in.                      |                      | CHECKED -  | REVISED - |   |                              |           |    |        | CONTRACT NO. 66061        |         |        |              |           |    |   |
| PLOT DATE : 6/4/2014                                 |                      | DATE -     | REVISED - |   |                              |           |    |        | ILLINOIS FED. AID PROJECT |         |        |              |           |    |   |

| CODE NO.   | ITEM   | UNIT  | TOTAL QUANTITY | CONSTR. CODE       |
|------------|--|-------|----------------|--------------------|
|            |  |       |                | 100% STATE ROADWAY |
|            |  |       |                | 0005 URBAN         |
| 44000500   | COMBINATION CURB AND GUTTER REMOVAL                    | FOOT  | 277            | 277                |
| 44000600   | SIDEWALK REMOVAL                                       | SQ FT | 1296           | 1296               |
| 60605000   | COMBINATION CONCRETE CURB AND GUTTER, TYPE B-6.24      | FOOT  | 277            | 277                |
| 67100100   | MOBILIZATION   | L SUM | 1              | 1                  |
| 70102625   | TRAFFIC CONTROL AND PROTECTION, STANDARD 701606        | L SUM | 1              | 1                  |
| 70300100   | SHORT TERM PAVEMENT MARKING                            | FOOT  | 14929          | 14929              |
| 70300210   | TEMPORARY PAVEMENT MARKING LETTERS AND SYMBOLS         | SQ FT | 93.6           | 93.6               |
| 70300220   | TEMPORARY PAVEMENT MARKING - LINE 4"                   | FOOT  | 9700           | 9700               |
| 70300240   | TEMPORARY PAVEMENT MARKING - LINE 6"                   | FOOT  | 2280           | 2280               |
| 70300250   | TEMPORARY PAVEMENT MARKING - LINE 8"                   | FOOT  | 458            | 458                |
| 70301000   | WORK ZONE PAVEMENT MARKING REMOVAL                     | SQ FT | 4971           | 4971               |
| △ 78008200 | POLYUREA PAVEMENT MARKING TYPE I - LETTERS AND SYMBOLS | SQ FT | 46.8           | 46.8               |
| △ 78008210 | POLYUREA PAVEMENT MARKING TYPE I - LINE 4"             | FOOT  | 4850           | 4850               |
| △ 78008230 | POLYUREA PAVEMENT MARKING TYPE I - LINE 6"             | FOOT  | 1787           | 1787               |

△ SPECIALTY ITEMS

|  |                               |            |           |
|--|-------------------------------|------------|-----------|
| FILE NAME :  | USER NAME : duncanbd          | DESIGNED - | REVISED - |
| o:\pwork\p\dot\duncanbd\0377300\036061-ah1-500.dgn | 6061-ah1-500.dgn              | DRAWN -    | REVISED - |
|  | PLOT SCALE * 100.0000 ' / in. | CHECKED -  | REVISED - |
|  | PLOT DATE * 6/4/2014          | DATE -     | REVISED - |

**STATE OF ILLINOIS  
DEPARTMENT OF TRANSPORTATION**

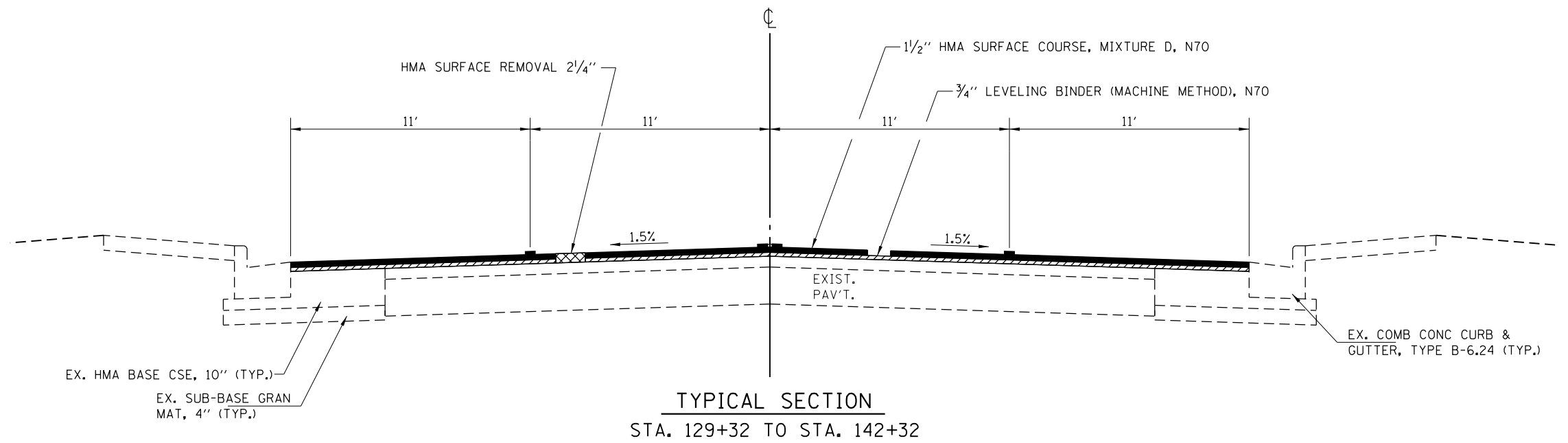
**SUMMARY OF QUANTITIES**

SCALE: SHEET OF SHEETS STA. TO STA.

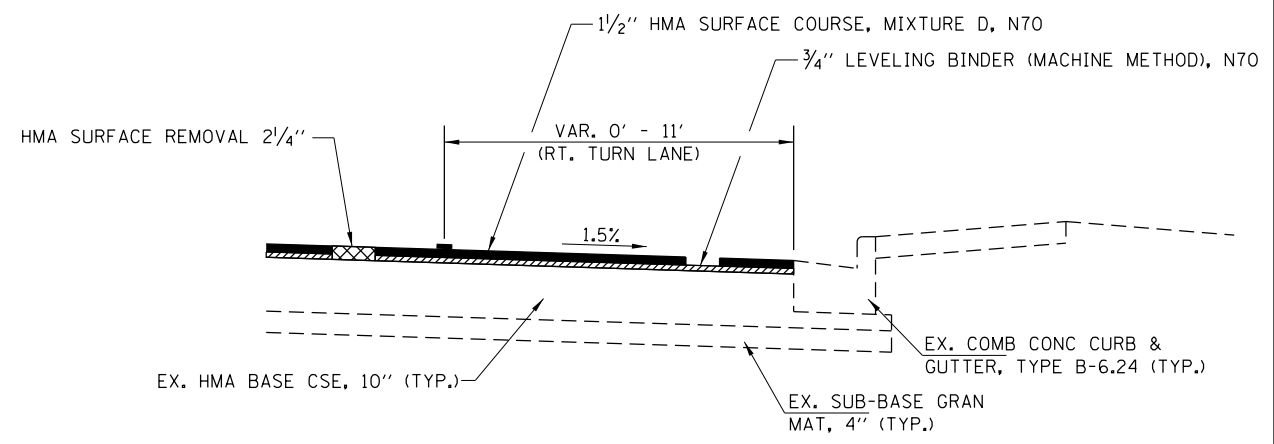
|                    |                  |                |                           |             |
|--------------------|------------------|----------------|---------------------------|-------------|
| F.A.P. RTE. 591    | SECTION 1651RS-1 | COUNTY KENDALL | TOTAL SHEETS 13           | SHEET NO. 4 |
| CONTRACT NO. 66061 |                  |                | ILLINOIS FED. AID PROJECT |             |

| CODE NO.   | ITEM  | UNIT                                      | TOTAL QUANTITY | CONSTR. CODE       |      |
|------------|---|---|----------------|--------------------|------|
|            |   |   |                | 100% STATE ROADWAY |      |
|            |   |   |                | 0005 URBAN         |      |
| △ 78008240 | POLYUREA PAVEMENT MARKING TYPE I - LINE 8"  | FOOT                                      | 229            | 229                |      |
| △ 78008250 | POLYUREA PAVEMENT MARKING TYPE I - LINE 12" | FOOT                                      | 454            | 454                |      |
| △ 78008270 | POLYUREA PAVEMENT MARKING TYPE I - LINE 24" | FOOT                                      | 85             | 85                 |      |
| △ 78100100 | RAISED REFLECTIVE PAVEMENT MARKER           | EACH                                      | 125            | 125                |      |
|            | 78300200                                    | RAISED REFLECTIVE PAVEMENT MARKER REMOVAL | EACH           | 125                | 125  |
|            | X4060110                                    | BITUMINOUS MATERIALS (PRIME COAT)         | POUND          | 8348               | 8348 |
|            | X6030310                                    | FRAMES AND LIDS TO BE ADJUSTED (SPECIAL)  | EACH           | 5                  | 5    |
|            | Z0030850                                    | TEMPORARY INFORMATION SIGNING             | SQ FT          | 42                 | 42   |
|            |   |   |                |                    |      |
|            |   |   |                |                    |      |
|            |   |   |                |                    |      |
|            |   |   |                |                    |      |
|            |   |   |                |                    |      |
|            |   |   |                |                    |      |
|            |   |   |                |                    |      |

△ SPECIALTY ITEMS



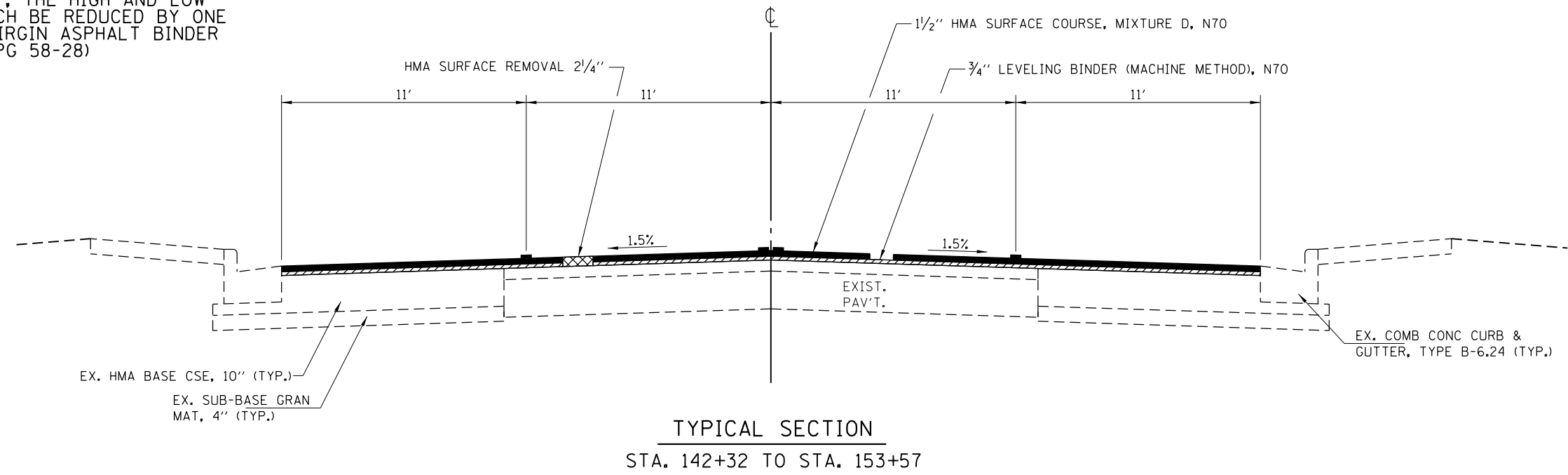
TYPICAL SECTION  
STA. 129+32 TO STA. 142+32



RT. TURN LANE DETAIL  
STA. 151+68 TO STA. 153+57

| MIXTURES TABLE         |             |                     |                          |
|------------------------|-------------|---------------------|--------------------------|
|                        | HMA SURFACE | HMA LEVELING BINDER | INCIDENTAL HMA SURFACING |
| PG GRADE**             | PG 64-22    | PG 64-22            | PG 64-22                 |
| DESIGN AIR VOIDS       | 4.0% @ N70  | 4.0% @ N70          | 4.0% @ N50               |
| MIXTURE COMPOSITION    | IL 9.5      | IL 9.5 FG           | IL 9.5                   |
| FRICTION AGGREGATE     | MIXTURE D   |                     | MIXTURE C                |
| DENSITY CONTROL METHOD | CORRELATION | CORRELATION         | SATISFACTION OF ENGINEER |

\*\* WHEN RAP/RAS ABR EXCEEDS 20 PERCENT, THE HIGH AND LOW VIRGIN ASPHALT BINDER GRADES SHALL EACH BE REDUCED BY ONE GRADE (I.E. 25% ABR WOULD REQUIRE A VIRGIN ASPHALT BINDER GRADE OF PG 64-22 TO BE REDUCED TO PG 58-28)



TYPICAL SECTION  
STA. 142+32 TO STA. 153+57

| MAINLINE PAVING SCHEDULE |        |          |                |              |             |            |             |           |           |           |
|--------------------------|--------|----------|----------------|--------------|-------------|------------|-------------|-----------|-----------|-----------|
| STA. TO STA.             | LENGTH | MAINLINE |                | HMA SURF     | HMA SURF    | LEV BIND   | BIT MAT     | MIX JTS   | LEV BIND  | TEMP      |
|                          |        | WIDTH    | AREA           | REM          | CSE MIX D   | (MM) N70   | PRIME       | CRACKS. & | (HM), N70 | RAMP      |
|                          | FT     | FT       | SQ YD          | 2 1/4"       | N70         | FG         | COAT        | FLANGWAYS | TON       | SQ YD     |
| 129+32 - 151+68          | 2236   | 44       | 10931.6        | 10931.6      | 918.25      | 459.13     | 7378.80     | 3.28      | 5.47      | 36.67     |
| 151+68 - 153+57          | 189    | VAR      | 1086.9         | 1086.9       | 91.30       | 45.65      | 733.65      | 0.33      | 0.54      | 45.83     |
| <b>TOTAL</b>             |        |          | <b>12018.4</b> | <b>12018</b> | <b>1010</b> | <b>505</b> | <b>8112</b> | <b>4</b>  | <b>6</b>  | <b>82</b> |

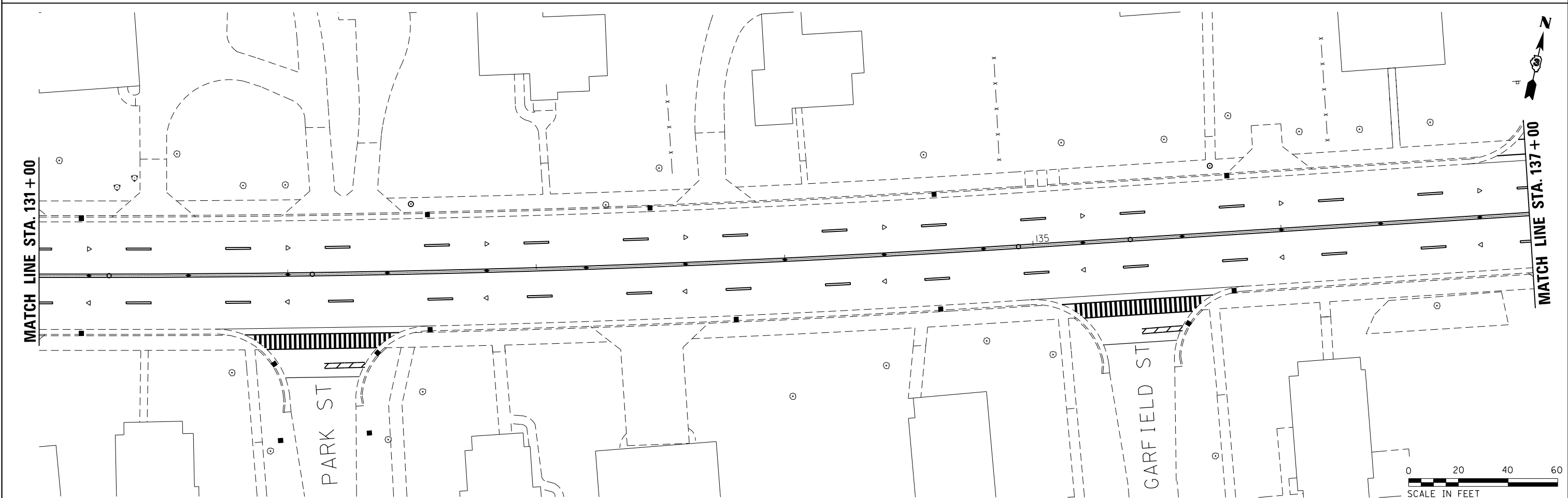
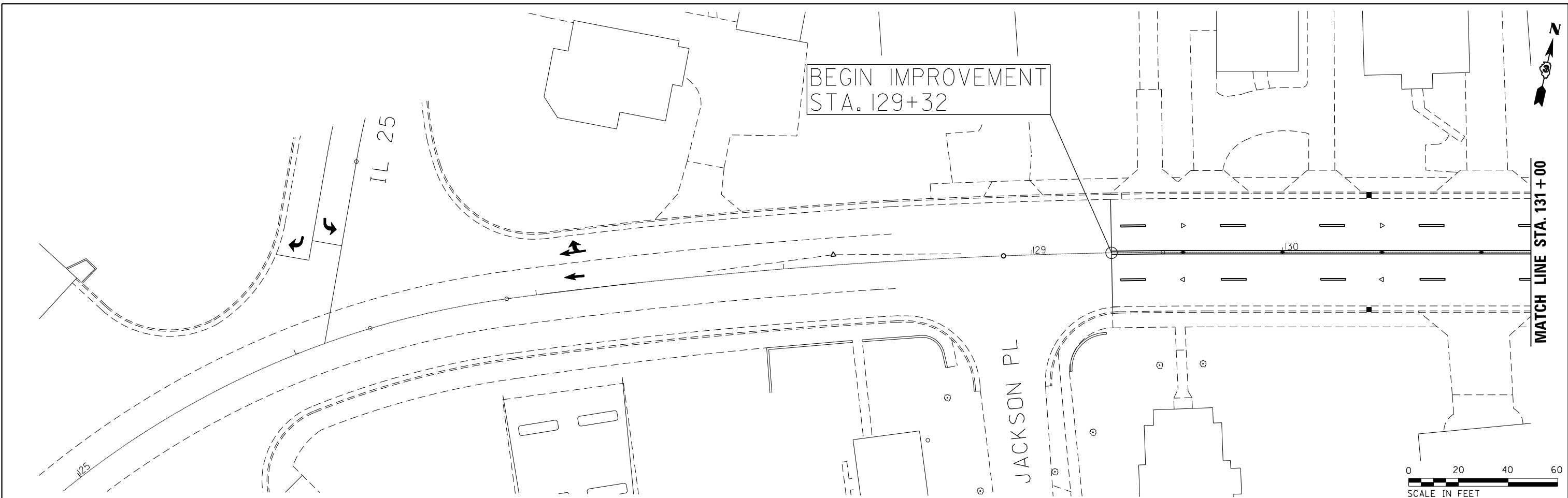
| SIDEROAD SCHEDULE |      |                 |      |       |        |            |           |            |            |       |
|-------------------|------|-----------------|------|-------|--------|------------|-----------|------------|------------|-------|
| MAINLINE STATION  | SIDE | DESCRIPTION     | TYPE | WIDTH | AREA   | HMA SURF   | INC       | TEMP       | BIT        |       |
|                   |      |                 |      | FT    | SQ YD  | REM 2 1/4" | HMA       | RAMP       | MAT        |       |
|                   |      |                 |      | FT    | SQ YD  | SQ YD      | TONS      | SQ YD      | POUND      | PR CT |
| 132+13            | RT   | PARK STREET     | HMA  | 30    | 100.10 | 100.10     | 12.61     | 25.17      | 45.03      |       |
| 135+40            | RT   | GARFIELD STREET | HMA  | 30    | 99.70  | 99.70      | 12.56     | 25.17      | 44.87      |       |
| 137+19            | LT   | PENN COURT      | HMA  | 30    | 100.00 | 100.00     | 12.60     | 25.17      | 45.00      |       |
| 138+71            | RT   | GRANT STREET    | HMA  | 30    | 99.70  | 99.70      | 12.56     | 25.17      | 44.87      |       |
| 150+25            | LT   | BEDNARCIK COURT | HMA  | 45    | 124.80 | 124.80     | 15.72     | 37.75      | 56.17      |       |
| <b>TOTAL</b>      |      |                 |      |       |        | <b>524</b> | <b>66</b> | <b>138</b> | <b>236</b> |       |

| CURB & SIDEWALK SCHEDULE      |                         |                  |              |                 |                    |           |               |               |                |  |
|-------------------------------|-------------------------|------------------|--------------|-----------------|--------------------|-----------|---------------|---------------|----------------|--|
| DESCRIPTION                   | COMB. CURB & GUTTER REM | CC&G TYPE B-6.24 | SIDEWALK REM | PCC SIDEWALK 4" | DETECTABLE WARNING | SODDING   | NIT FERT NUTR | POT FERT NUTR | PHOS FERT NUTR |  |
|                               | FOOT                    | FOOT             | SQ FT        | SQ FT           | SQ FT              | SQ YD     | LB            | LB            | LB             |  |
| PARK STREET                   |                         |                  |              |                 |                    |           |               |               |                |  |
| SOUTHWEST CORNER              | 25                      | 25               | 101          | 101             | 28                 | 5.00      | 0.07          | 0.07          | 0.07           |  |
| SOUTHEAST CORNER              | 23                      | 23               | 122          | 122             | 28                 | 6.00      | 0.08          | 0.08          | 0.08           |  |
| GARFIELD STREET               |                         |                  |              |                 |                    |           |               |               |                |  |
| SOUTHWEST CORNER              | 25                      | 25               | 99           | 99              | 28                 | 5.00      | 0.07          | 0.07          | 0.07           |  |
| SOUTHEAST CORNER              | 22                      | 22               | 101          | 101             | 28                 | 5.00      | 0.07          | 0.07          | 0.07           |  |
| PENN COURT                    |                         |                  |              |                 |                    |           |               |               |                |  |
| NORTHWEST CORNER              | 26                      | 26               | 90           | 90              | 28                 | 5.00      | 0.07          | 0.07          | 0.07           |  |
| NORTHEAST CORNER              | 24                      | 24               | 119          | 119             | 28                 | 5.00      | 0.07          | 0.07          | 0.07           |  |
| GRANT STREET                  |                         |                  |              |                 |                    |           |               |               |                |  |
| SOUTHWEST CORNER              | 26                      | 26               | 103          | 103             | 28                 | 5.00      | 0.07          | 0.07          | 0.07           |  |
| SOUTHEAST CORNER              | 26                      | 26               | 106          | 106             | 28                 | 5.00      | 0.07          | 0.07          | 0.07           |  |
| MIDBLOCK ACROSS FROM GRANT ST | 21                      | 21               | 131          | 131             | 10                 | 6.00      | 0.08          | 0.08          | 0.08           |  |
| BEDNARCIK COURT               |                         |                  |              |                 |                    |           |               |               |                |  |
| NORTHWEST CORNER              | 25                      | 25               | 109          | 109             | 26                 | 6.00      | 0.08          | 0.08          | 0.08           |  |
| NORTHEAST CORNER              | 34                      | 34               | 215          | 215             | 32                 | 0.00      | 0.13          | 0.13          | 0.13           |  |
| <b>TOTAL</b>                  | <b>277</b>              | <b>277</b>       | <b>1296</b>  | <b>1296</b>     | <b>292</b>         | <b>53</b> | <b>1</b>      | <b>1</b>      | <b>1</b>       |  |

| PAVEMENT MARKINGS                      |                 |               |               |               |               |                            |                                  |             |             |            |                   |                                |
|--|-----------------|---------------|---------------|---------------|---------------|----------------------------|----------------------------------|-------------|-------------|------------|-------------------|--------------------------------|
| STA. TO STA.                           | POLYUREA TYPE 1 |               |               |               |               | LETTERS & SYMBOLS<br>SQ FT | RAISED REFL<br>PAVT MARK<br>EACH | TEMPORARY   |             |            |                   | SHORT TERM<br>(3 APPL)<br>FOOT |
|  | 4"              | 6"            | 8"            | 12"           | 24"           |                            |                                  | 4"          | 6"          | 8"         | LETTERS & SYMBOLS |                                |
|  | YELLOW<br>FOOT  | WHITE<br>FOOT | WHITE<br>FOOT | WHITE<br>FOOT | WHITE<br>FOOT |                            |                                  | (2 APPL)    |             |            | SQ FT             |                                |
| 129+32 - 152+08                        |                 |               |               |               |               |                            |                                  |             |             |            |                   |                                |
| CENTERLINE                             | 4552            |               |               |               |               |                            | 114                              | 9104        |             |            |                   | 13656                          |
| CENTER LANE LINES                      |                 | 1140          |               |               |               |                            |                                  |             | 2280        |            |                   | 682.8                          |
| CROSSWALK NEAR GRANT<br>152+08- 153+57 |                 | 88            |               |               |               |                            |                                  |             |             |            |                   |                                |
| CENTERLINE                             | 298             |               |               |               |               |                            | 4                                | 596         |             |            |                   | 89.4                           |
| LEFT TURN LANE                         |                 |               | 149           |               |               | 31.2                       | 4                                |             |             | 298        | 62.4              | 333                            |
| RIGHT TURN LANE                        |                 |               | 80            |               |               | 15.6                       | 3                                |             |             | 160        | 31.2              | 168                            |
| PARK STREET                            |                 |               |               |               |               |                            |                                  |             |             |            |                   |                                |
| CROSSWALK<br>STOPBAR                   |                 | 106           |               | 154           |               |                            |                                  |             |             |            |                   |                                |
| GARFIELD STREET                        |                 |               |               |               |               |                            |                                  |             |             |            |                   |                                |
| CROSSWALK<br>STOPBAR                   |                 | 105           |               | 148           |               |                            |                                  |             |             |            |                   |                                |
| PENN COURT                             |                 |               |               |               |               |                            |                                  |             |             |            |                   |                                |
| CROSSWALK<br>STOPBAR                   |                 | 106           |               |               |               |                            |                                  |             |             |            |                   |                                |
| GRANT STREET                           |                 |               |               |               |               |                            |                                  |             |             |            |                   |                                |
| CROSSWALK<br>STOPBAR                   |                 | 106           |               | 152           |               |                            |                                  |             |             |            |                   |                                |
| BEDNARCIK COURT                        |                 |               |               |               |               |                            |                                  |             |             |            |                   |                                |
| CROSSWALK<br>STOPBAR                   |                 | 136           |               |               |               |                            |                                  |             |             |            |                   |                                |
| <b>TOTAL</b>                           | <b>4850</b>     | <b>1787</b>   | <b>229</b>    | <b>454</b>    | <b>85</b>     | <b>46.8</b>                | <b>125</b>                       | <b>9700</b> | <b>2280</b> | <b>458</b> | <b>93.6</b>       | <b>14929</b>                   |

|   |                      |            |                           |   |                               |                |         |        |                 |              |
|---|----------------------|------------|---------------------------|---|-------------------------------|----------------|---------|--------|-----------------|--------------|
| FILE NAME =   | USER NAME = duncanbd | DESIGNED - | REVISED -                 | <b>STATE OF ILLINOIS<br/>DEPARTMENT OF TRANSPORTATION</b> | <b>SCHEDULE OF QUANTITIES</b> | F.A.P.<br>RTE. | SECTION | COUNTY | TOTAL<br>SHEETS | SHEET<br>NO. |
| et:\pw\work\p1dot\duncanbd\0377300\0366061-sht-schedule.dgn | DRAWN -              | REVISED -  | 591                       |   |                               | (65)RS-1       | KENDALL | 13     | 8               |              |
| PLOT SCALE = 100.0000' / in.                                | CHECKED -            | REVISED -  | CONTRACT NO. 66D61        |   |                               |                |         |        |                 |              |
| PLOT DATE = 6/4/2014  | DATE -               | REVISED -  | ILLINOIS FED. AID PROJECT |   |                               |                |         |        |                 |              |
|   |                      |            |                           |   | SCALE:                        | SHEET          | OF      | SHEETS | STA.            | TO STA.      |





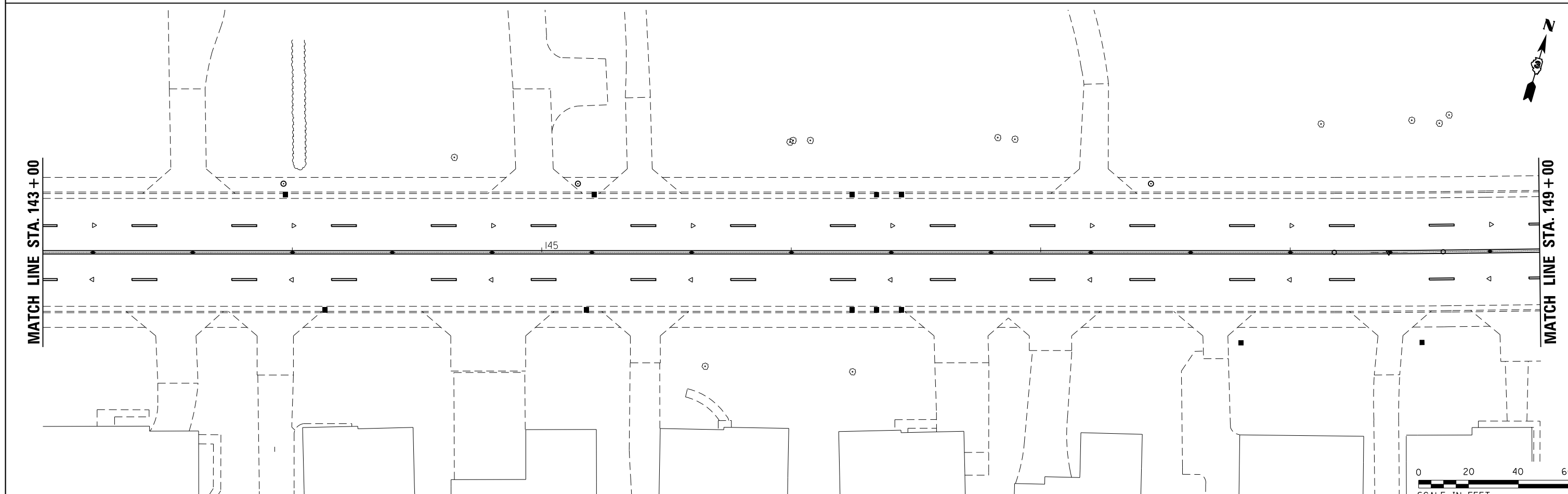
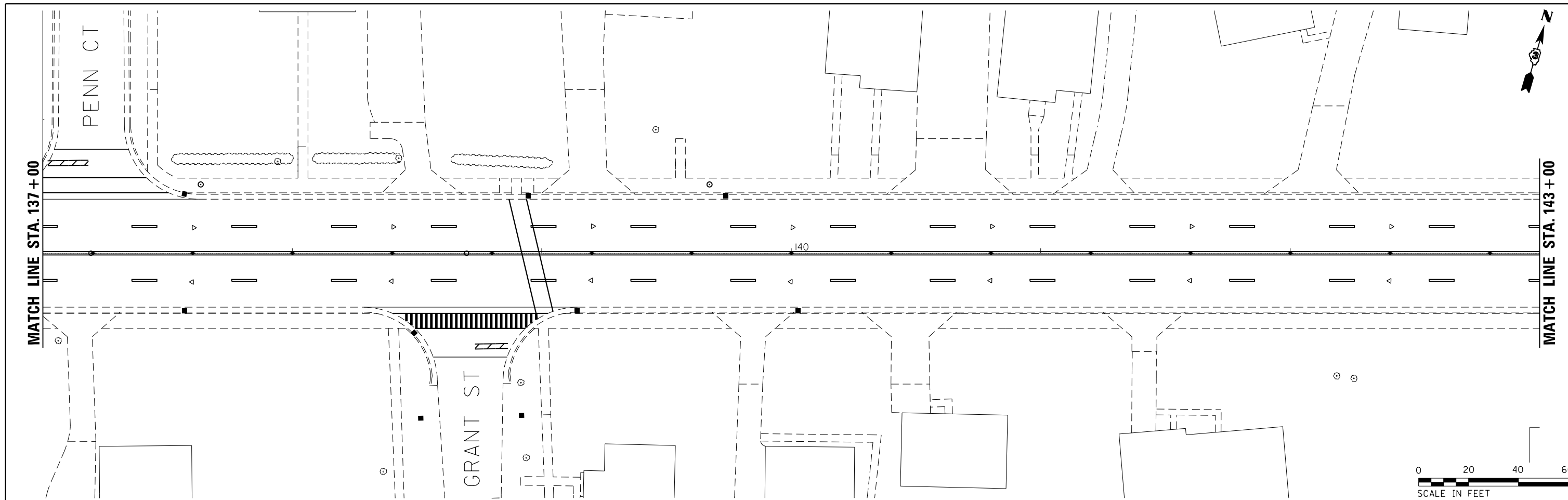
|  |                             |            |           |
|--|-----------------------------|------------|-----------|
| FILE NAME =<br>c:\pwork\pwork\dot\duncanbd\0377300\036061-sht-plan.dgn | USER NAME = duncanbd        | DESIGNED - | REVISED - |
|  |                             | DRAWN -    | REVISED - |
|  | PLOT SCALE = 40.0000' / in. | CHECKED -  | REVISED - |
| Default  | PLOT DATE = 6/4/2014        | DATE -     | REVISED - |

**STATE OF ILLINOIS  
DEPARTMENT OF TRANSPORTATION**

**PLAN VIEWS**

SCALE: 1=20      SHEET 1 OF 3 SHEETS      STA. 125+00 TO STA. 137+00

| F.A.P. RTE.               | SECTION  | COUNTY  | TOTAL SHEETS | SHEET NO. |
|---------------------------|----------|---------|--------------|-----------|
| 591                       | (651RS-1 | KENDALL | 13           | 9         |
| CONTRACT NO. 66D61        |          |         |              |           |
| ILLINOIS FED. AID PROJECT |          |         |              |           |



|   |                             |            |           |   |                   |                     |                            |                    |                    |                           |                    |                 |
|---|-----------------------------|------------|-----------|---|-------------------|---------------------|----------------------------|--------------------|--------------------|---------------------------|--------------------|-----------------|
| FILE NAME =<br>c:\pwwork\pwwork\duncanbd\0377300\0366061-sht-plan.dgn | USER NAME = duncanbd        | DESIGNED - | REVISED - | <b>STATE OF ILLINOIS<br/>DEPARTMENT OF TRANSPORTATION</b> | <b>PLAN VIEWS</b> |                     |                            | F.A.P. RTE.<br>591 | SECTION<br>651RS-1 | COUNTY<br>KENDALL         | TOTAL SHEETS<br>13 | SHEET NO.<br>10 |
| Default   | PLOT SCALE = 40.0000' / in. | DRAWN -    | REVISED - |   | SCALE: 1=20       | SHEET 2 OF 3 SHEETS | STA. 137+00 TO STA. 149+00 | CONTRACT NO. 66D61 |                    | ILLINOIS FED. AID PROJECT |                    |                 |
|   | PLOT DATE = 6/4/2014        | CHECKED -  | REVISED - |   |                   |                     |                            |                    |                    |                           |                    |                 |
|   |                             | DATE -     | REVISED - |   |                   |                     |                            |                    |                    |                           |                    |                 |



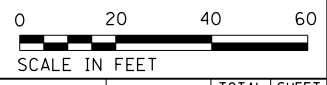
END IMPROVEMENT  
STA. 153+57

BEDNARCIK CT

US RTE 34

IL 71

MATCH LINE STA. 149+00



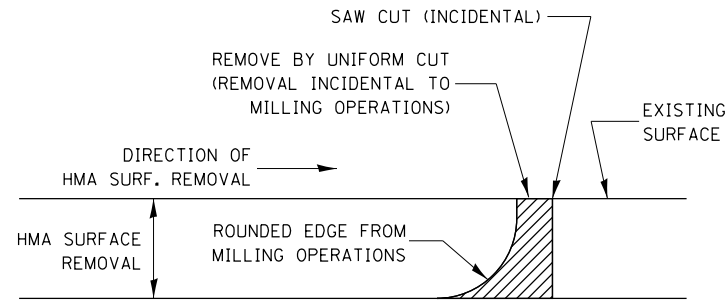
|   |                             |            |           |
|---|-----------------------------|------------|-----------|
| FILE NAME =<br>c:\pwwork\pwwork\duncanbd\0377300\0366061-sht-plan.dgn | USER NAME = duncanbd        | DESIGNED - | REVISED - |
| Default   | PLOT SCALE = 40.0000' / in. | DRAWN -    | REVISED - |
|   | PLOT DATE = 6/4/2014        | CHECKED -  | REVISED - |
|   |                             | DATE -     | REVISED - |

**STATE OF ILLINOIS  
DEPARTMENT OF TRANSPORTATION**

**PLAN VIEWS**

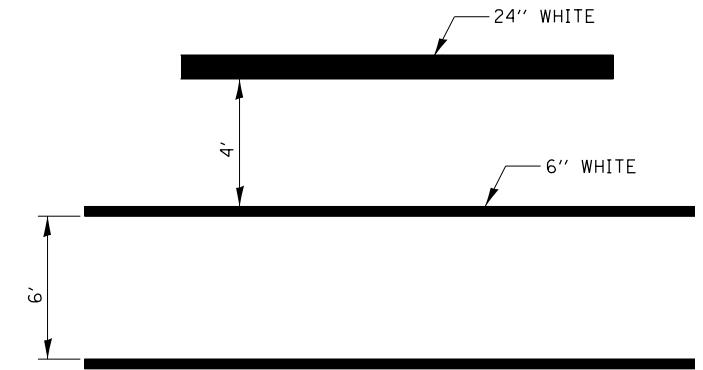
SCALE: 1-20    SHEET 3 OF 3 SHEETS    STA. 149+00 TO STA. 155+00

| F.A.P. RTE.               | SECTION  | COUNTY  | TOTAL SHEETS | SHEET NO. |
|---------------------------|----------|---------|--------------|-----------|
| 591                       | (651RS-1 | KENDALL | 13           | 11        |
| CONTRACT NO. 66D61        |          |         |              |           |
| ILLINOIS FED. AID PROJECT |          |         |              |           |

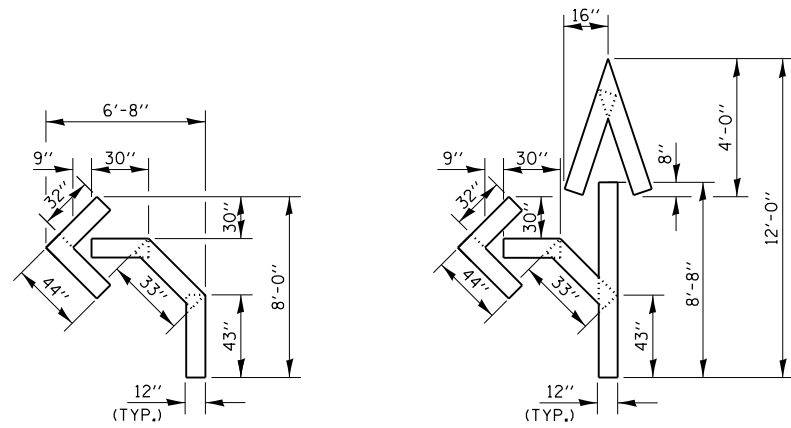


NOTE:  
 WHEN MILLING OPERATIONS PRODUCE A ROUNDED EDGE,  
 THEN A SAW CUT SHALL BE USED TO MANUFACTURE  
 A PERPENDICULAR EDGE AS SHOWN IN THE DETAIL.  
 THE ENGINEER SHALL BE THE SOLE JUDGE  
 CONCERNING THE USE OF THIS DETAIL

**HMA DETAIL AT BUTT JOINTS**

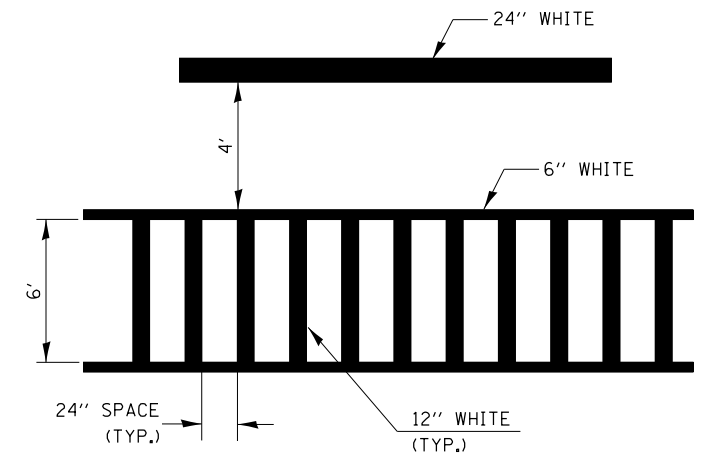


**TYPICAL SPACING DETAIL FOR  
CROSSWALKS AND STOP BARS**

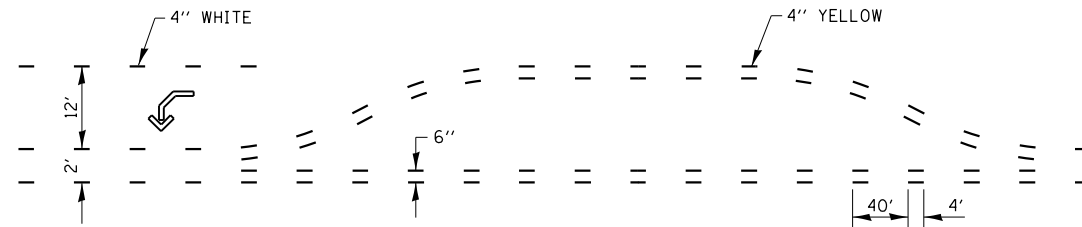


QUANTITY  
 12" LINE = 16 LIN. FT.  
 OR 4" LINE = 48 LIN. FT.

QUANTITY  
 12" LINE = 29 LIN. FT.  
 OR 4" LINE = 87 LIN. FT.

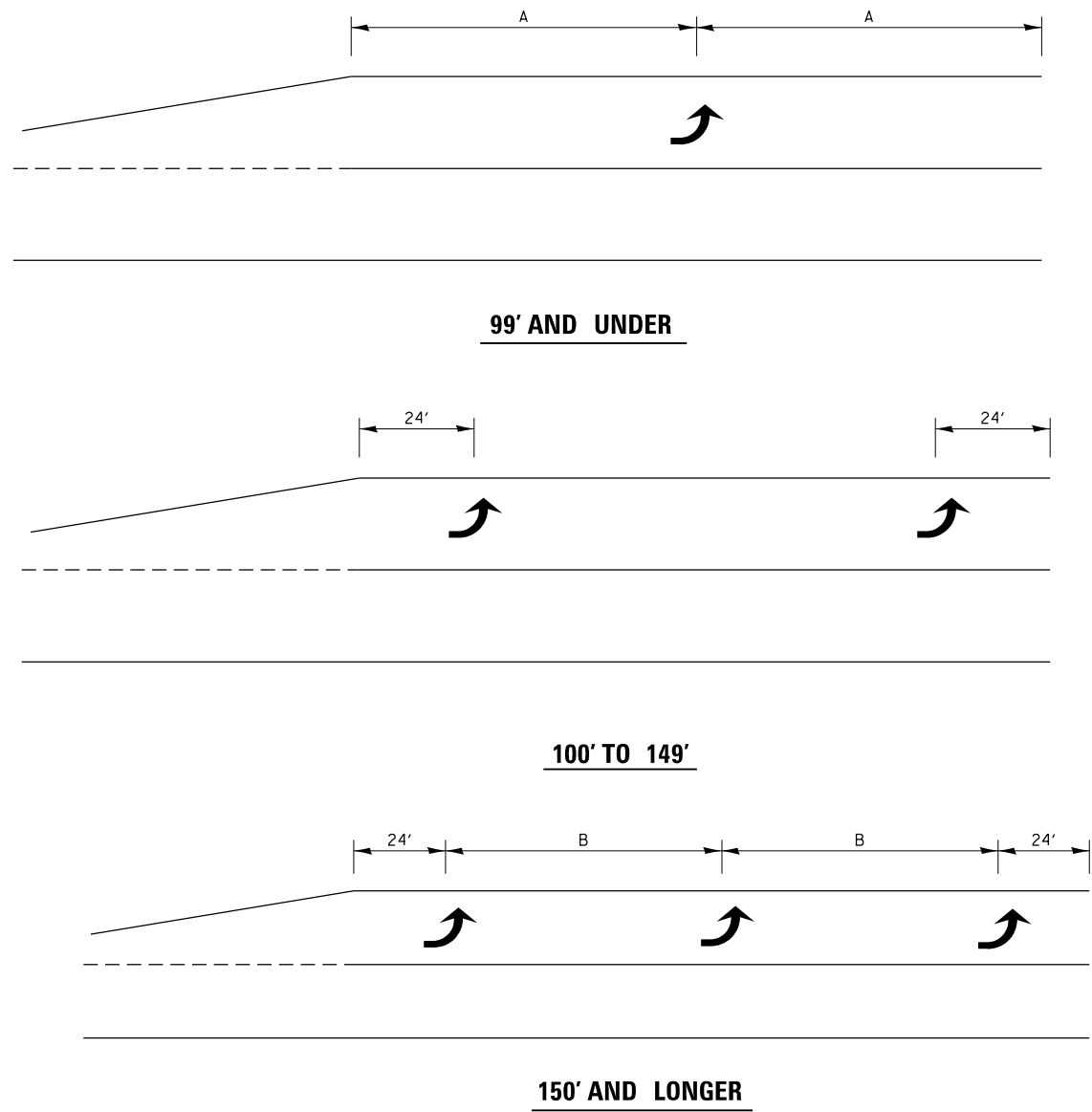


**TYPICAL SPACING DETAIL FOR  
CROSSWALKS AND STOP BARS**

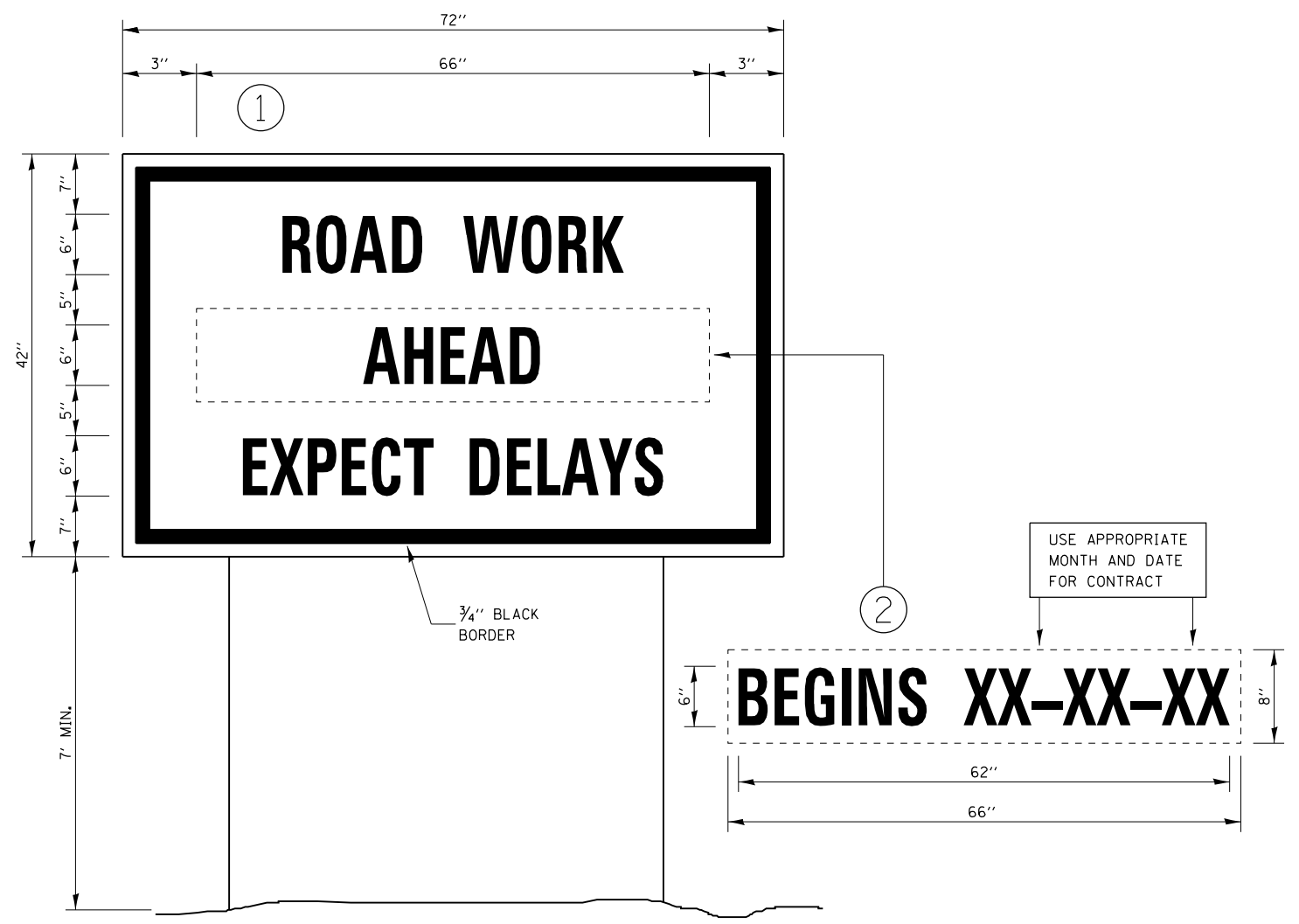


**SHORT-TERM PAVEMENT MARKING  
FOR MEDIANS AND ARROWS**

|  |                              |            |           |   |                |           |    |                |         |         |                           |              |         |    |    |
|--|------------------------------|------------|-----------|---|----------------|-----------|----|----------------|---------|---------|---------------------------|--------------|---------|----|----|
| FILE NAME =  | USER NAME = duncanbd         | DESIGNED - | REVISED - | <b>STATE OF ILLINOIS<br/>DEPARTMENT OF TRANSPORTATION</b> | <b>DETAILS</b> |           |    | F.A.P.<br>RTE. | SECTION | COUNTY  | TOTAL<br>SHEETS           | SHEET<br>NO. |         |    |    |
| et:\pw\work\p\dot\duncanbd\0377300\0386061-sht-details.dgn |                              | DRAWN -    | REVISED - |   | SCALE:         | SHEET NO. | OF | SHEETS         | STA.    | TO STA. | 591                       | (65)RS-1     | KENDALL | 13 | 12 |
|  |                              | CHECKED -  | REVISED - |   |                |           |    |                |         |         |                           |              |         |    |    |
|  |                              | DATE -     | REVISED - |   |                |           |    |                |         |         |                           |              |         |    |    |
|  | PLOT SCALE = 100.0000' / in. |            |           |   |                |           |    |                |         |         |                           |              |         |    |    |
|  | PLOT DATE = 6/4/2014         |            |           |   |                |           |    |                |         |         |                           |              |         |    |    |
|  |                              |            |           |   |                |           |    |                |         |         | CONTRACT NO. 66D61        |              |         |    |    |
|  |                              |            |           |   |                |           |    |                |         |         | ILLINOIS FED. AID PROJECT |              |         |    |    |



**TYPICAL PLACEMENT OF ARROWS  
IN TURN LANES**



**TEMPORARY INFORMATION SIGNING**

**NOTES:**

1. USE 6" D BLACK LETTERING ON FLOURESENT ORANGE BACKGROUND.
2. ERECT SIGNS AT LOCATIONS IN ADVANCE OF THE "ROAD CONSTRUCTION AHEAD" SIGNS AS DIRECTED BY THE ENGINEER.
3. ERECT SIGN ① WITH INSTALLED PANEL ② A MINIMUM OF ONE WEEK PRIOR TO THE START OF THE LANE CLOSURE.
4. REMOVE PANEL ② ON THAT DATE.
5. SEE SPECIAL PROVISION "TEMPORARY INFORMATION SIGNING" FOR ADDITIONAL INFORMATION.
6. WILL BE PAID FOR PER SQ FT AS "TEMPORARY INFORMATION SIGNING". EACH SIGN = 21 SQ FT AND THE DATE PANEL ② WILL NOT BE MEASURED SEPARATELY FOR PAYMENT.

|             |                      |                              |           |   |                |                           |    |        |                |         |        |                 |              |    |    |
|-------------|----------------------|------------------------------|-----------|---|----------------|---------------------------|----|--------|----------------|---------|--------|-----------------|--------------|----|----|
| FILE NAME = | USER NAME = duncanbd | DESIGNED -                   | REVISED - | <b>STATE OF ILLINOIS<br/>DEPARTMENT OF TRANSPORTATION</b> | <b>DETAILS</b> |                           |    |        | F.A.P.<br>RTE. | SECTION | COUNTY | TOTAL<br>SHEETS | SHEET<br>NO. |    |    |
|             |                      | DRAWN -                      | REVISED - |   | SCALE:         | SHEET                     | OF | SHEETS | STA.           | TO STA. | 591    | (651)RS-1       | KENDALL      | 13 | 13 |
|             |                      | PLOT SCALE = 100.0000' / in. | CHECKED - |   | REVISED -      | CONTRACT NO. 66D61        |    |        |                |         |        |                 |              |    |    |
|             |                      | PLOT DATE = 6/4/2014         | DATE -    |   | REVISED -      | ILLINOIS FED. AID PROJECT |    |        |                |         |        |                 |              |    |    |