

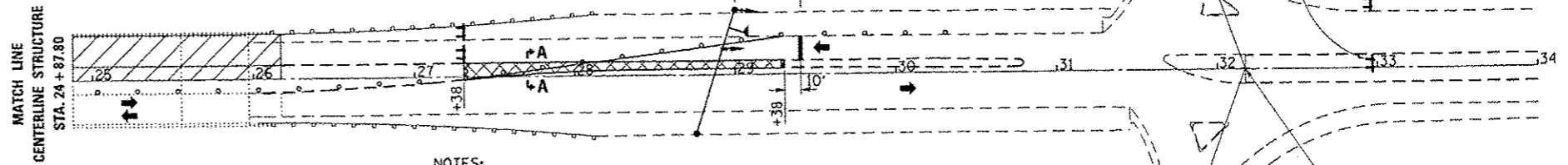
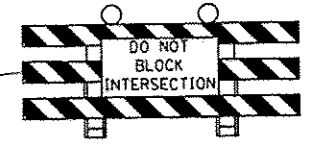


HMA MIXTURE REQUIREMENTS FOR TEMPORARY PAVEMENT

	HMA BINDER
PG GRADE	PG64-22
DESIGN AIR	4.0%
VOIDS	φ N90
MIXTURE COMPOSITION	IL 19.0
FRICTION	
AGGREGATE	
DENSITY CONTROL METHOD	SATISFACTION OF THE ENGINEER

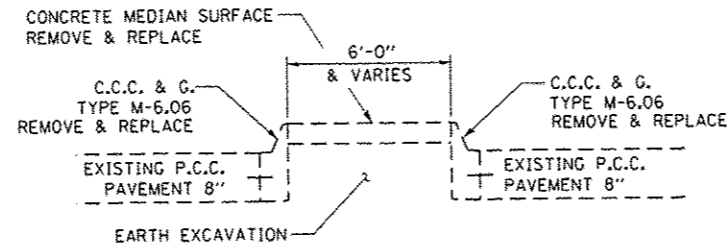


R10-6A-2430



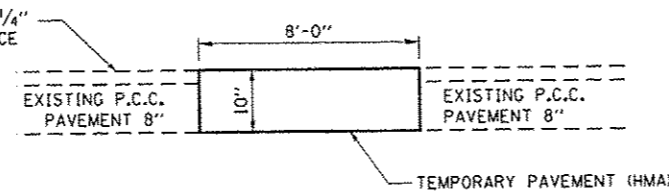
- NOTES:
1. WORK ON MEDIANS SHALL BE COMPLETED PRIOR TO ERECTING STAGE I TRAFFIC CONTROL FOR STAGE I WORK.
 2. FURNISHING AND PLACING TEMPORARY HOT-MIX ASPHALT PAVEMENT WILL BE PAID FOR AS "TEMPORARY PAVEMENT". REMOVAL WILL BE PAID FOR AS "TEMPORARY PAVEMENT REMOVAL".

STA. 32+17.03 IL RTE. 9 =
STA. 0+00.00 RAMP "A" =
STA. 12+80.84 RAMP "B"



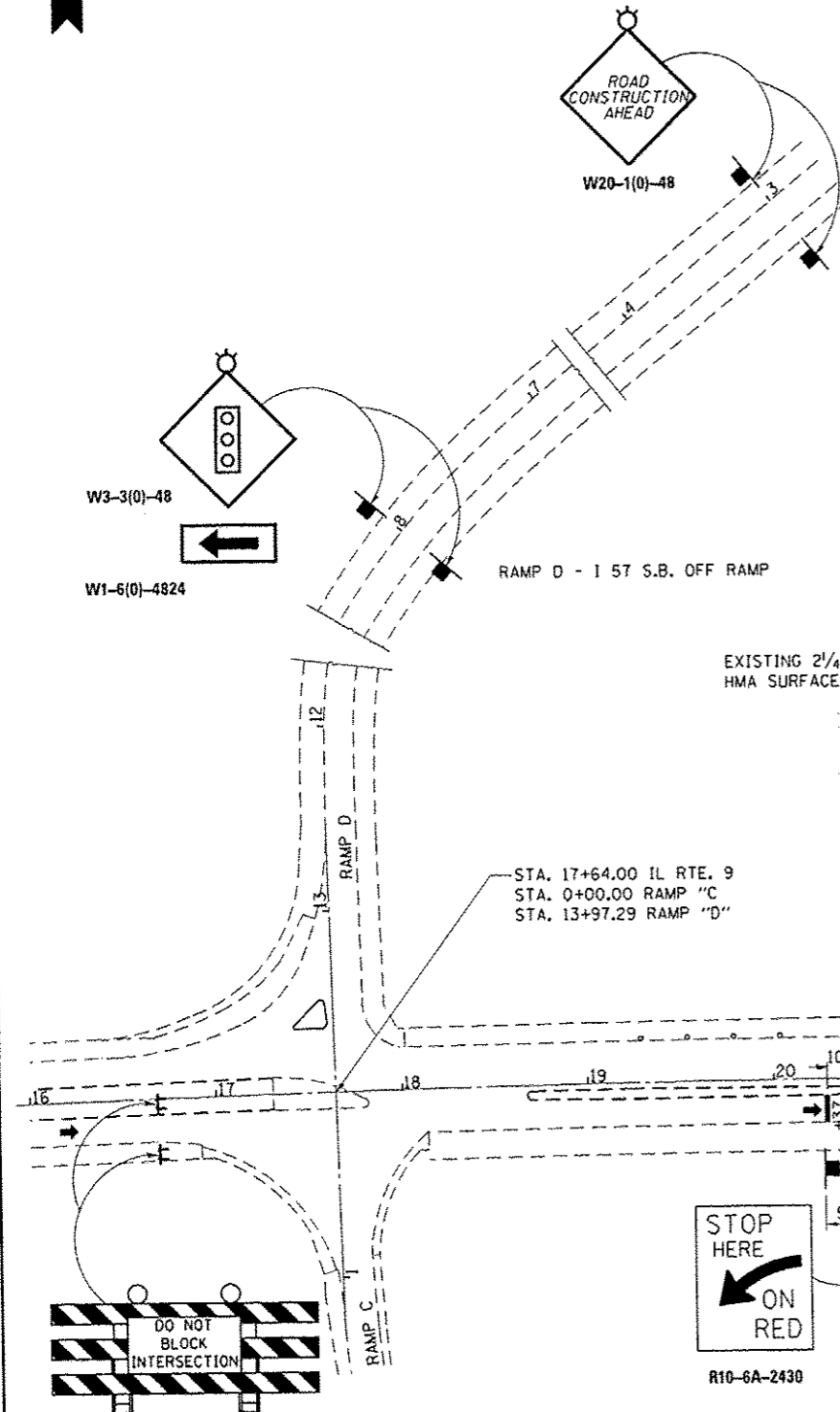
EXISTING SECTION A-A

STA. 20+37 - STA. 22+37
STA. 27+38 - STA. 29+38



PROPOSED SECTION A-A

STA. 20+37 - STA. 22+37
STA. 27+38 - STA. 29+38



RAMP B - I 57 N.B. OFF RAMP

RAMP D - I 57 S.B. OFF RAMP

STA. 17+64.00 IL RTE. 9
STA. 0+00.00 RAMP "C"
STA. 13+97.29 RAMP "D"

LEGEND

- TYPE III BARRICADE
- MICROWAVE DETECTOR
- TRAFFIC SIGNAL HEAD WITH BACKPLATE & POST
- CABLE MOUNTED TRAFFIC SIGNAL HEAD WITH BACKPLATE
- WOOD POST
- BARRICADE OR DRUM WITH STEADY BURN LIGHTS AT 25FT C-C
- WORK ZONE
- TEMPORARY HMA PAVEMENT CONSTRUCTED PRIOR TO STAGE I BRIDGE WORK
- SIGN-POST MOUNTED