

GENERAL NOTES

ALL STRUCTURAL STEEL SHALL CONFORM TO AASHTO CLASSIFICATION M-270 GR. 36, UNLESS OTHERWISE NOTED.

PLAN DIMENSIONS AND DETAILS RELATIVE TO EXISTING PLANS ARE SUBJECT TO NOMINAL CONSTRUCTION VARIATIONS. THE CONTRACTOR SHALL FIELD VERIFY EXISTING DIMENSIONS AND DETAILS AFFECTING NEW CONSTRUCTION AND MAKE NECESSARY APPROVED ADJUSTMENTS PRIOR TO CONSTRUCTION OR ORDERING OF MATERIALS. SUCH VARIATIONS SHALL NOT BE CAUSE FOR ADDITIONAL COMPENSATION FOR A CHANGE IN SCOPE OF THE WORK, HOWEVER, THE CONTRACTOR WILL BE PAID FOR THE QUANTITY ACTUALLY FURNISHED AT THE UNIT PRICE BID FOR THE WORK.

REINFORCEMENT BARS DESIGNATED (E) SHALL BE EPOXY COATED.

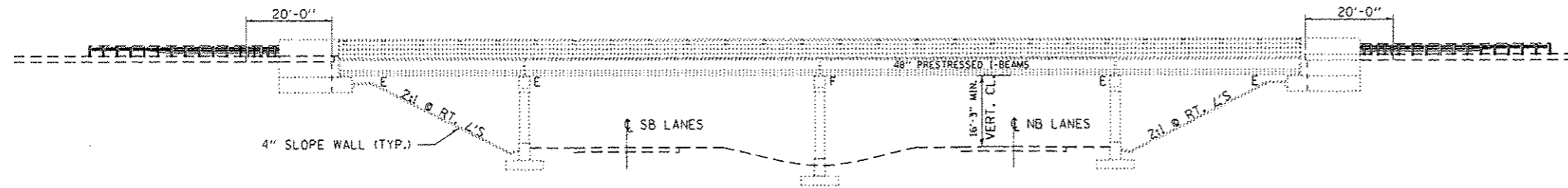
THE DECK SURFACE SHALL HAVE ITS FINAL FINISH TINED ACCORDING TO ARTICLE 420.09(a)(1) OF THE STANDARD SPECIFICATIONS. COST INCLUDED WITH CONCRETE SUPERSTRUCTURES.

JOINT PLATES AND ATTACHED BARS SHALL BE SHOP PAINTED WITH THE INORGANIC ZINC RICH PRIMER. NO FIELD PAINT REQUIRED.

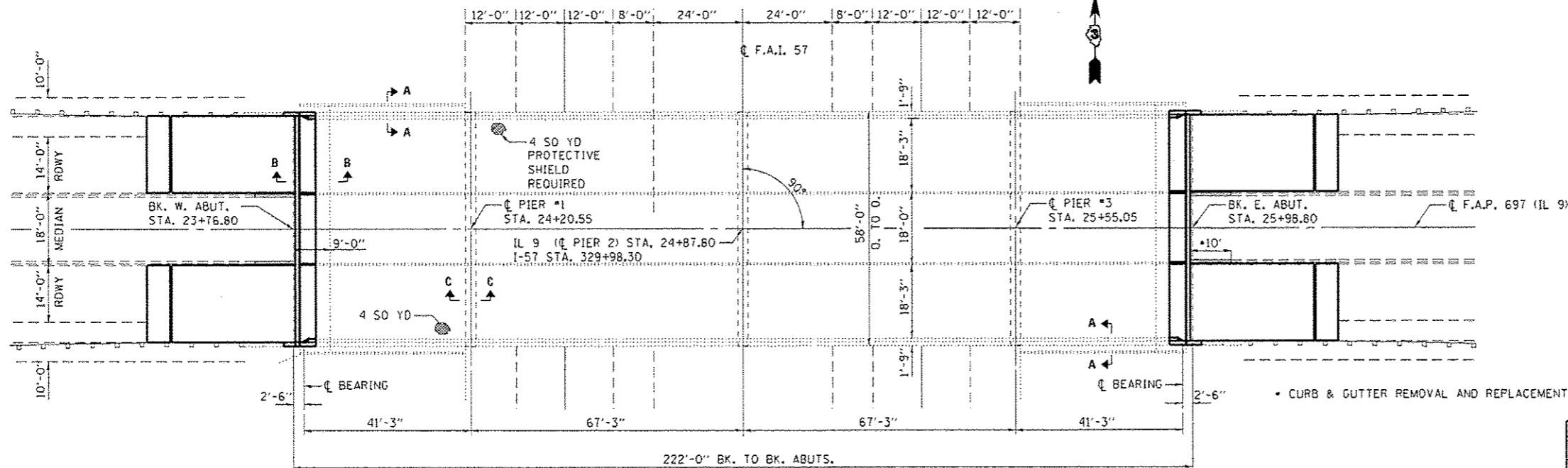
EXISTING REINFORCEMENT BARS EXTENDING INTO THE REMOVAL AREA SHALL BE CLEANED, STRAIGHTENED AND INCORPORATED INTO THE NEW CONSTRUCTION. ANY REINFORCEMENT BARS THAT ARE DAMAGED DURING CONCRETE REMOVAL SHALL BE REPLACED WITH AN APPROVED BAR SPLICER OR ANCHORAGE SYSTEM. COST INCLUDED WITH CONCRETE REMOVAL.

JOINT OPENINGS SHALL BE ADJUSTED ACCORDING TO ARTICLE 520.04 OF THE STD. SPECS. WHEN THE DECK IS POURED AT AN AMBIENT TEMPERATURE OTHER THAN 50° F.

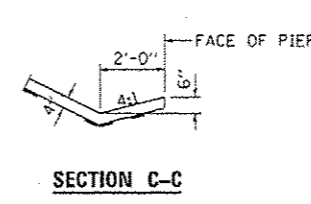
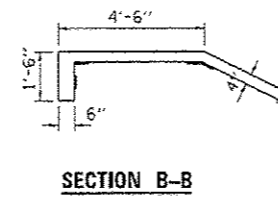
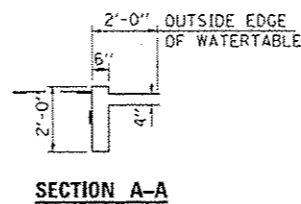
PROTECTIVE COAT SHALL BE PLACED ON "ALL" NEWLY PLACED CONCRETE SURFACES OF THE APPROACH SLABS, ABUT. BLOCK OUTS, DECK, INCLUDING MEDIAN SURFACES, INSIDE SURFACES OF THE PARAPET AND WING WALLS.



ELEVATION



**PLAN
STRUCTURE NO. 027-0010**



SLOPEWALL SECTIONS



TOTAL BILL OF MATERIAL

ITEM	UNIT	QUANTITY
CONCRETE REMOVAL	CU YD	57.8
CONCRETE STRUCTURES	CU YD	57.2
CONCRETE SUPERSTRUCTURE	CU YD	133.6
PROTECTIVE COAT	SO YD	1304
REINFORCEMENT BARS, EPOXY COATED	POUND	39440
BAR SPLICERS	EACH	16
BAR SPLICERS, SPECIAL	EACH	8
MECHANICAL SPLICERS	EACH	236
PREFORMED JOINT STRIP SEAL	FOOT	114
POLYMER MODIFIED PORTLAND CEMENT MORTAR	SO FT	98
REMOVE AND RE-ERECT EXISTING BRIDGE RAIL	FOOT	40
BRACED EXCAVATION	CU YD	66
GRANULAR BACKFILL FOR STRUCTURES	CU YD	66
DECK SLAB REPAIR (FULL DEPTH, TYPE II)	SO YD	8
STRUCTURAL REPAIR OF CONCRETE (DEPTH EQUAL TO OR LESS THAN 5")	EACH	31
PROTECTIVE SHIELD	SO YD	4



David Carl Puzey 6/30/14
Expires 11/30/14

FILE NAME =	USER NAME = woodshankr1	DESIGNED - RON WOODSHANK	REVISED - 6/21/2014	STATE OF ILLINOIS DEPARTMENT OF TRANSPORTATION	EXISTING PLAN AND ELEVATION FOR STRUCTURE NO. 027-0010	F.A.P. RTE. 697	SECTION (27-1HB-21)R	COUNTY FORD	TOTAL SHEETS 27	SHEET NO. 15
CONTRACT NO. 66074	ILLINOIS F&D PROJECT	SCALE: _____	SHEET NO. 1 OF 13 SHEETS			STA. 23+76.80 TO STA. 25+98.80				
PLOT SCALE = 1/8" = 1' / in.	CHECKED - YOGESH PATEL	DATE - 2/10/2014	REVISED -							
PLOT DATE = 6/21/2014	DATE -	REVISED -								