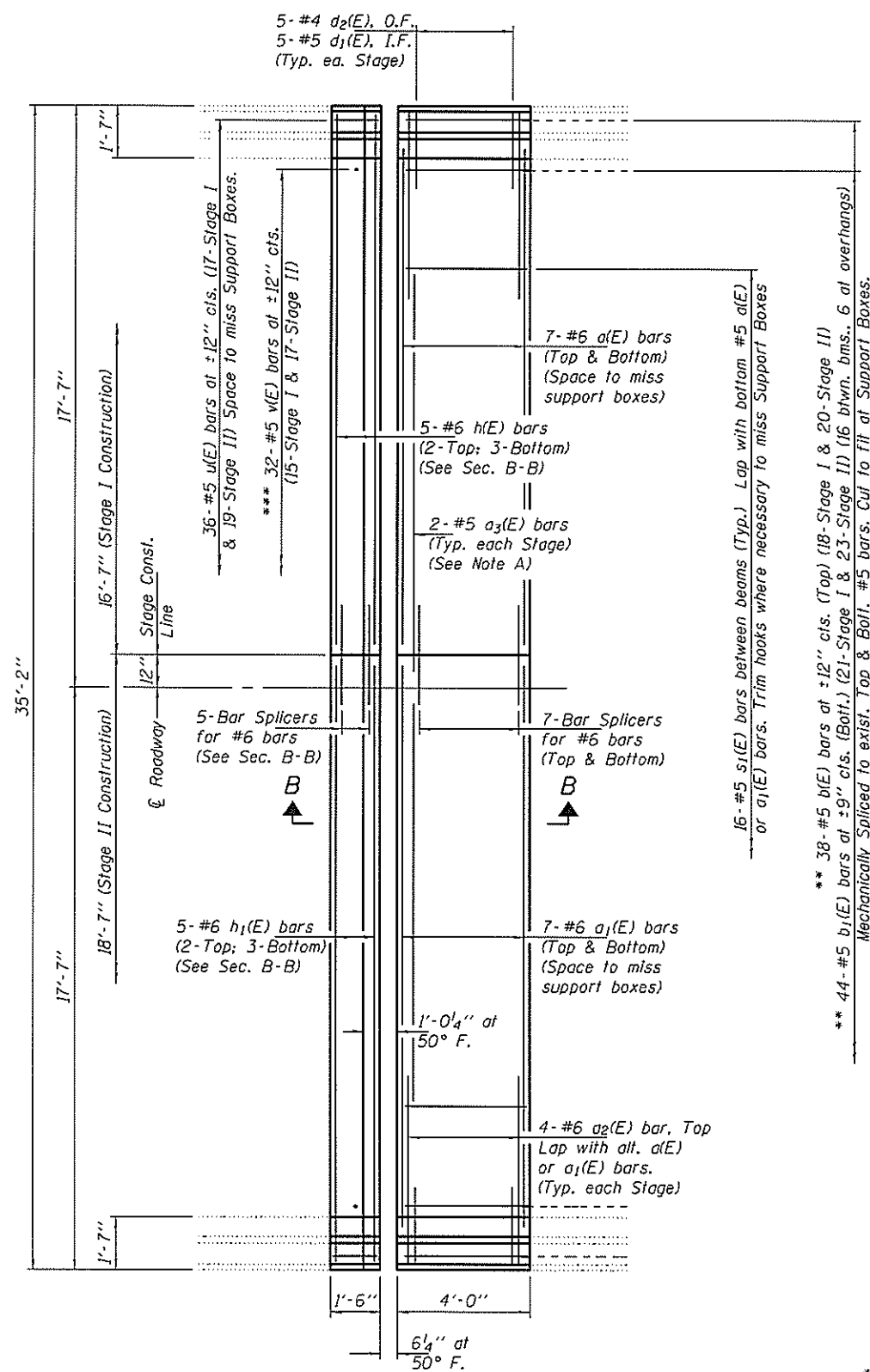
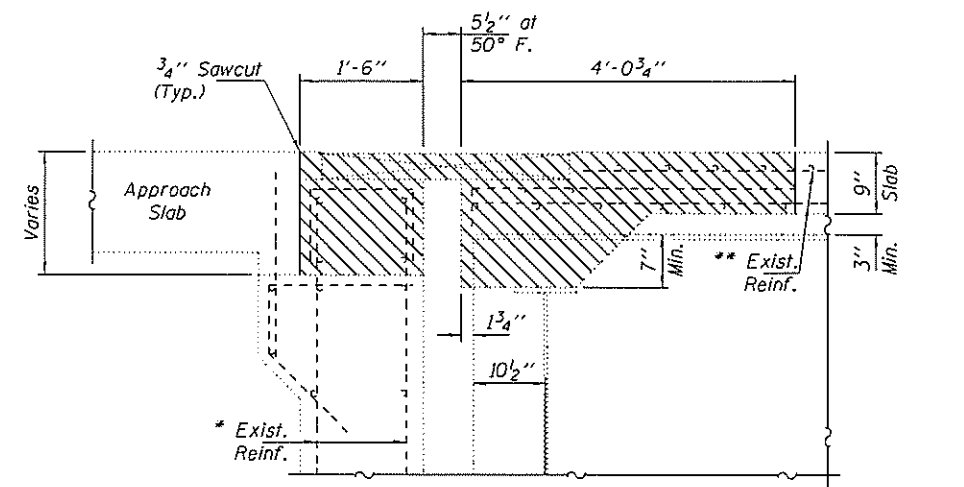


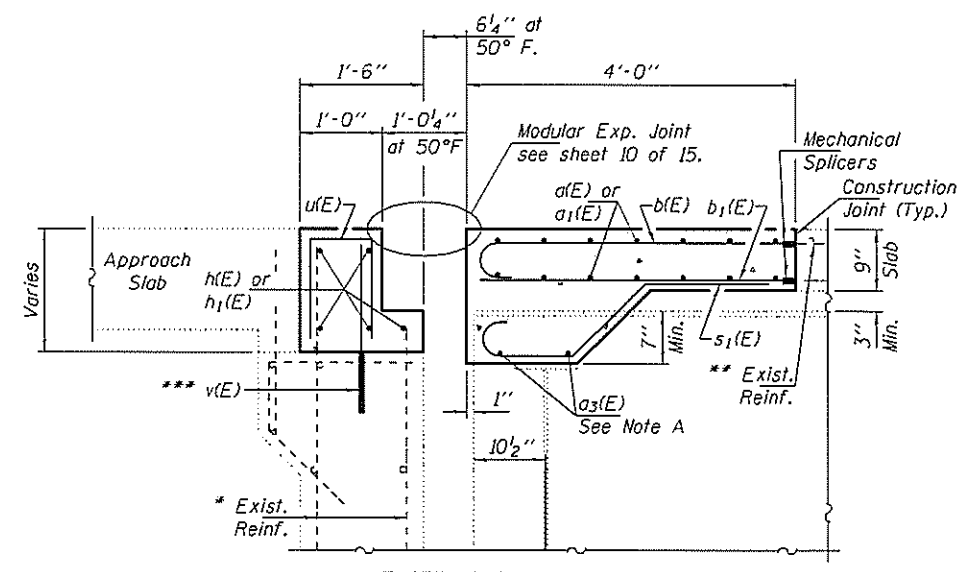
WEST ABUTMENT REMOVAL PLAN



WEST ABUTMENT REPLACEMENT PLAN



SECTION A-A



SECTION B-B

Note A:
Place a3(E) bars below Support Boxes. Leave portion of bar exposed during Stage I Construction. See Section B-B.

* Existing reinforcement bars extending into the removal area shall be cleaned, straightened and incorporated into the new construction. Any reinforcement bars that are damaged during concrete removal shall be replaced with an approved bar splicer or anchorage system. Cost included with Concrete Removal.

** Cut existing reinforcement 6" from removal line to facilitate installation of Mechanical Splicers.

*** Epoxy Grout v(E) bars in 9" min. holes according to Article 584 of the Standard Specifications.

BILL OF MATERIAL (W. ABUT.)

Bar	No.	Size	Length	Shape
a(E)	14	#6	15'-6"	—
a1(E)	14	#6	17'-6"	—
a2(E)	8	#6	5'-7"	—
a3(E)	4	#5	13'-8"	—
b(E)	38	#5	4'-1"	—
b1(E)	44	#5	3'-9"	—
d1(E)	10	#5	3'-11"	—
d2(E)	10	#4	6'-7"	—
h(E)	5	#6	16'-3"	—
h1(E)	5	#6	18'-3"	—
s1(E)	32	#5	4'-5"	—
u(E)	32	#5	2'-9"	—
v(E)	32	#5	2'-0"	—
Concrete Removal		Cu. Yd.	10.0	
Concrete Superstructure		Cu. Yd.	9.1	
Bar Splicers		Each	19	
Mechanical Splicers		Each	82	
Reinforcement Bars, Epoxy Coated		Pounds	1810	

DESIGNED ATH	EXAMINED	DATE
CHECKED GGE	<i>Timothy A. Anzani</i>	JUNE 24, 2014
DRAWN Kyle M. Steffen	PASSED	REVISED
CHECKED ATH GGE		REVISED

STATE OF ILLINOIS
DEPARTMENT OF TRANSPORTATION

WEST ABUTMENT JOINT REMOVAL & REPLACEMENT DETAILS
SN 001-0068

F.A. RTE.	SECTION	COUNTY	TOTAL SHEETS	SHEET NO.
63	(125)B.R.-1	ADAMS	31	19
CONTRACT NO. 72G80			ILLINOIS FED. AID PROJECT	