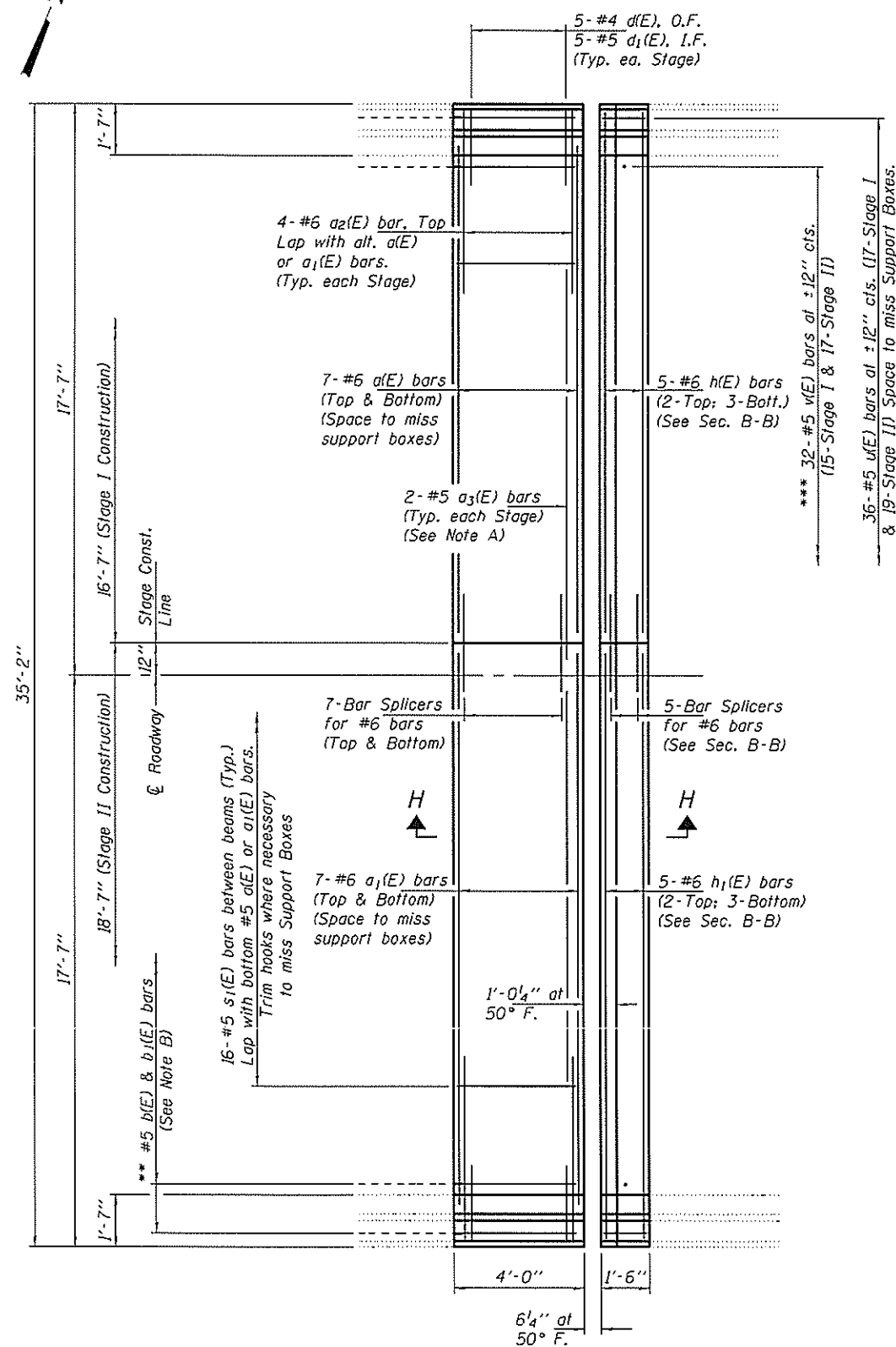
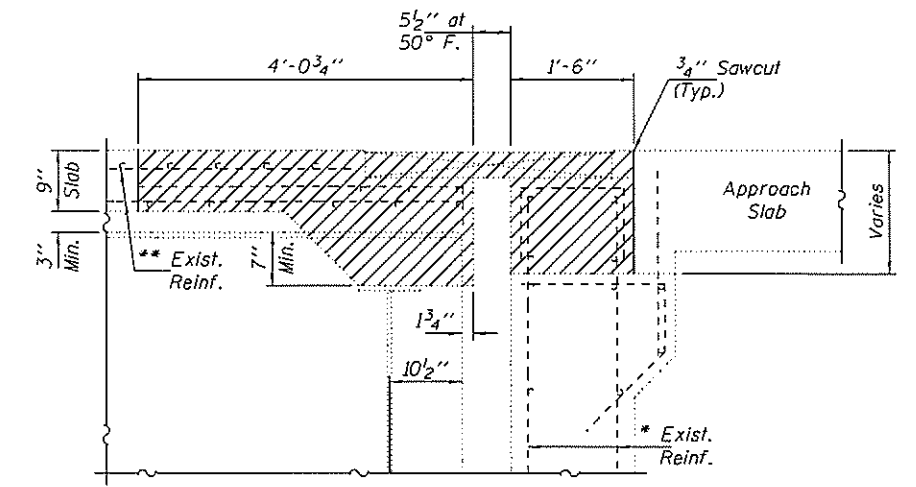


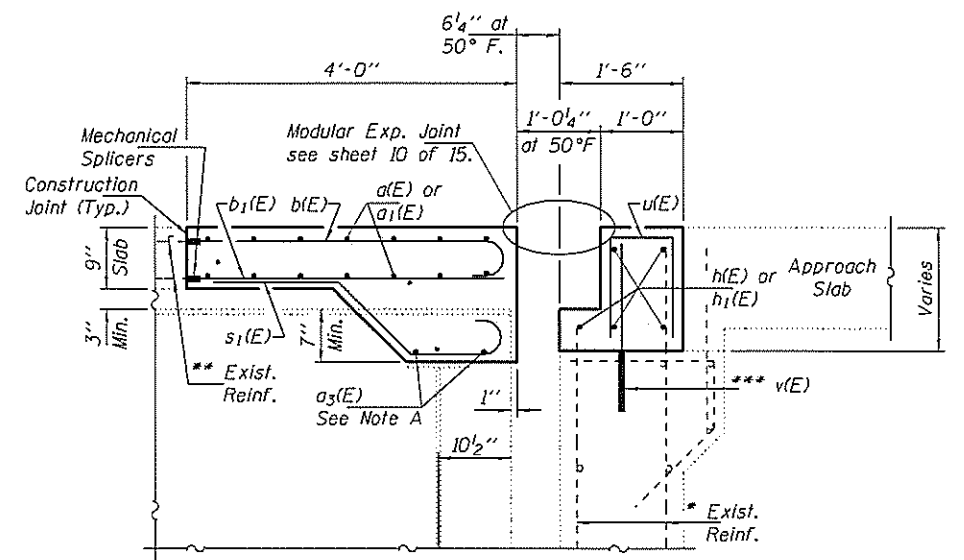
EAST ABUTMENT REMOVAL PLAN



EAST ABUTMENT REPLACEMENT PLAN



SECTION G-G



SECTION H-H

Note A:
Place a3(E) bars below Support Boxes. Leave portion of bar exposed during Stage I Construction. See Section H-H.

Note B:
** 38-#5 b(E) bars at ±12" cts. (Top) (18-Stage I & 20-Stage II)
** 44-#5 b1(E) bars at ±9" cts. (Bottom) (21-Stage I & 23-Stage II) (16 between beams; 6 at overhangs) Mechanically Spliced to exist. #5 bars. Cut to fit at Support Boxes.

* Existing reinforcement bars extending into the removal area shall be cleaned, straightened and incorporated into the new construction. Any reinforcement bars that are damaged during concrete removal shall be replaced with an approved bar splicer or anchorage system. Cost included with Concrete Removal.

** Cut existing reinforcement 6" from removal line to facilitate installation of Mechanical Splicers.

*** Epoxy Grout v(E) bars in 9" min. holes according to Article 584 of the Standard Specifications.

BILL OF MATERIAL (E. ABUT.)

Bar	No.	Size	Length	Shape
a(E)	14	#6	15'-6"	—
a1(E)	14	#6	17'-6"	—
a2(E)	8	#6	5'-7"	—
a3(E)	4	#5	13'-8"	—
b(E)	38	#5	4'-1"	—
b1(E)	44	#5	3'-9"	—
d1(E)	10	#5	3'-11"	—
d2(E)	10	#4	6'-7"	—
h(E)	5	#6	16'-3"	—
h1(E)	5	#6	18'-3"	—
s1(E)	32	#5	4'-5"	—
u(E)	32	#5	2'-9"	—
v(E)	32	#5	2'-0"	—
Concrete Removal			Cu. Yd.	10.2
Concrete Superstructure			Cu. Yd.	9.3
Bar Splicers			Each	19
Mechanical Splicers			Each	82
Reinforcement Bars, Epoxy Coated			Pounds	1810

DESIGNED <u>ATH</u>	EXAMINED <u>Timothy A. Anzani</u>	DATE <u>JUNE 24, 2014</u>
CHECKED <u>GGE</u>	PASSED <u>ACTING ENGINEER OF STRUCTURAL SERVICES</u>	REVISED
DRAWN <u>Kyle M. Steffen</u>	ACTING ENGINEER OF BRIDGES AND STRUCTURES	REVISED
CHECKED <u>ATH GGE</u>		

STATE OF ILLINOIS
DEPARTMENT OF TRANSPORTATION

EAST ABUTMENT JOINT REMOVAL & REPLACEMENT DETAILS
SN 001-0068

F.A. RTE.	SECTION	COUNTY	TOTAL SHEETS	SHEET NO.
63	112B/JR, I-7	ADAMS	31	25
				CONTRACT NO. T2G80