

F.A.P. RTE.	SECTION	COUNTY	TOTAL SHEETS	SHEET NO.
666	*	SANGAMON	19	1
		ILLINOIS	CONTRACT NO. 72H08	

• (110X) I-2, (SP-Z) I-1

D-96-079-14



LOCATION OF SECTION INDICATED THUS: - [black rectangle] -

INDEX OF SHEETS

- 1 COVER SHEET
- 2 GENERAL NOTES
- 3,4 SUMMARY OF QUANTITIES
- 5 SCHEDULE OF QUANTITIES
- 6-13 TYPICAL CROSS SECTIONS
- 14-17 PLAN LAYOUTS
- 18,19 DETAIL SHEETS

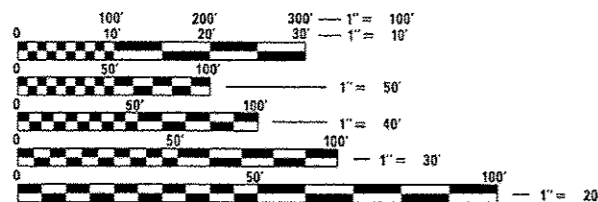
HIGHWAY STANDARDS

001001-02	701602-07
001006	701701-09
442201-03	701901-03
701601-09	886001-01

WHEREVER IN THESE PLANS SECTION D6 SPRING RD REPAIR 2014-6 IS MENTIONED, IT SHALL MEAN SECTION (110X)I-2, (SP-Z) I-1

ROADWAY FUNCTIONAL CLASS
OTHER PRINCIPAL ARTERIAL

AVERAGE DAILY TRAFFIC
SEE SHEET 5



FULL SIZE PLANS HAVE BEEN PREPARED USING STANDARD ENGINEERING SCALES. REDUCED SIZED PLANS WILL NOT CONFORM TO STANDARD SCALES. IN MAKING MEASUREMENTS ON REDUCED PLANS, THE ABOVE SCALES MAY BE USED.

J.U.L.I.E.
JOINT UTILITY LOCATION INFORMATION FOR EXCAVATION
1-800-892-0123
OR 811

PROJECT ENGINEER: VINCE MADONIA - (217)785-9046
TEAM MANAGER: TIM SLAGLE - (217)785-5538

CONTRACT NO. 72H08

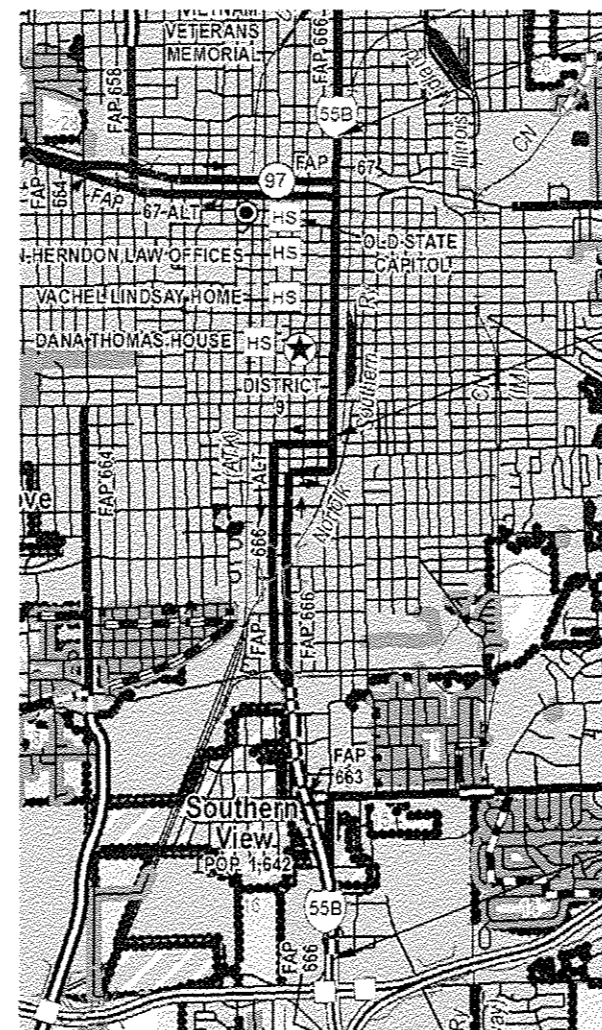
STATE OF ILLINOIS DEPARTMENT OF TRANSPORTATION DIVISION OF HIGHWAYS

PROPOSED HIGHWAY PLANS

FAP ROUTE 666 (BUS. LOOP 55 (5TH, 6TH & 9TH STREETS))
SECTION (110X) I-2, (SP-Z) I-1

MAINLINE PAVEMENT PATCHING SANGAMON COUNTY

C-96-079-14



PROJECT SECTION BEGINS, ENDS
(9TH STREET, JUST SOUTH
OF CARPENTER STREET)

PROJECT SECTION ENDS
(5TH & 6TH STREETS)

PROJECT SECTION BEGINNING
(5TH & 6TH STREETS)

LOCATION MAP

NET LENGTH = 23,126.40 FEET = 4.38 MILES

REVISED 7-21-14

STATE OF ILLINOIS
DEPARTMENT OF TRANSPORTATION
DIVISION OF HIGHWAYS

SUBMITTED MAY 22 2014
Roger J. Driskell
DEPUTY DIRECTOR OF HIGHWAYS, REGION ENGINEER

June 27 2014
John D. Baranzelli, PE
ENGINEER OF DESIGN AND ENVIRONMENT

June 27 2014
Omer Osman, PE
DIRECTOR OF HIGHWAYS, CHIEF ENGINEER

PRINTED BY THE AUTHORITY
OF THE STATE OF ILLINOIS

CODE NO.	ITEM	UNIT	TOTAL QUANTITY	CONSTR. CODE
				100% STATE ROADWAY 0005
			URBAN	
40600400	MIXTURE FOR CRACKS, JOINTS, AND FLANGEWAYS	TON	53	53
44200156	PAVEMENT PATCHING, TYPE II, 13 INCH	SQ YD	201	201
44200160	PAVEMENT PATCHING, TYPE III, 13 INCH	SQ YD	64	64
44200162	PAVEMENT PATCHING, TYPE IV, 13 INCH	SQ YD	302	302
56500600	DOMESTIC WATER SERVICE BOXES TO BE ADJUSTED	EACH	3	3
60255500	MANHOLES TO BE ADJUSTED	EACH	1	1
67100100	MOBILIZATION	L SUM	1	1
70102630	TRAFFIC CONTROL AND PROTECTION, STANDARD 701601	L SUM	1	1
70102632	TRAFFIC CONTROL AND PROTECTION, STANDARD 701602	L SUM	1	1
70102635	TRAFFIC CONTROL AND PROTECTION, STANDARD 701701	L SUM	1	1
* 78001120	PAINT PAVEMENT MARKING - LINE 5"	FOOT	2000	2000
* 88600100	DETECTOR LOOP, TYPE I	FOOT	585	585
X4405020	LONGITUDINAL PARTIAL DEPTH REMOVAL 2"	FOOT	3600	3600
X4406240	PARTIAL DEPTH REMOVAL, TYPE II, 4"	SQ YD	729	729
X4406440	PARTIAL DEPTH REMOVAL, TYPE III, 4"	SQ YD	321	321



* SPECIALTY ITEM

REVISD 7-21-14

FILE NAME :	USER NAME : sparksg	DESIGNED - MOK	REVISED -	STATE OF ILLINOIS DEPARTMENT OF TRANSPORTATION	SUMMARY OF QUANTITIES				F.A.P. RTE.	SECTION	COUNTY	TOTAL SHEETS	SHEET NO.
cr:\pwork\puidot\sparksg\08397739\0672\08-sht-500.dgn	DRAWN - MOK	REVISED -	REVISED -						666	***	SANGAMON	19	3
Default	PLOT SCALE = 100.0000' / in.	CHECKED -	REVISED -		SCALE:	SHEET	OF	SHEETS	STA.	TO STA.	ILLINOIS FED. AID PROJECT		
	PLOT DATE = May-22-2014 04:01:00PM	DATE -	REVISED -		*** 06 SPRING RD REPAIR 2014-6								

CONTRACT NO. 72H08