

**STATE OF ILLINOIS**  
**DEPARTMENT OF TRANSPORTATION**  
**DIVISION OF HIGHWAYS**  
**PROPOSED**  
**SPRING ROAD REPAIR**

FOR INDEX OF SHEETS, SEE SHEET NO. 2

**FAP ROUTE 506 (IL 96)**  
**SECTION (10) I**

**BRIDGE DECK PATCHING**  
**ADAMS COUNTY**

C-96-094-14

WHEREVER IN THESE PLANS SECTION D6 SPRING RD REPAIR 2014-22 IS MENTIONED, IT SHALL MEAN SECTION (10)I

F.A.P. RTE.	SECTION	COUNTY	TOTAL SHEETS	SHEET NO.
506		ADAMS	8	1
		ILLINOIS	CONTRACT NO. 72H23	

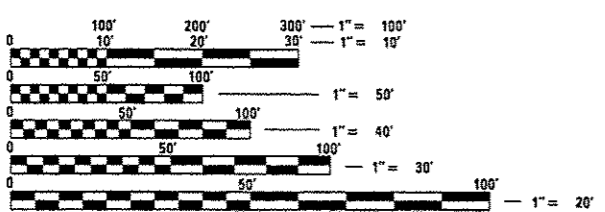
\*(10) I

D-96-094-14



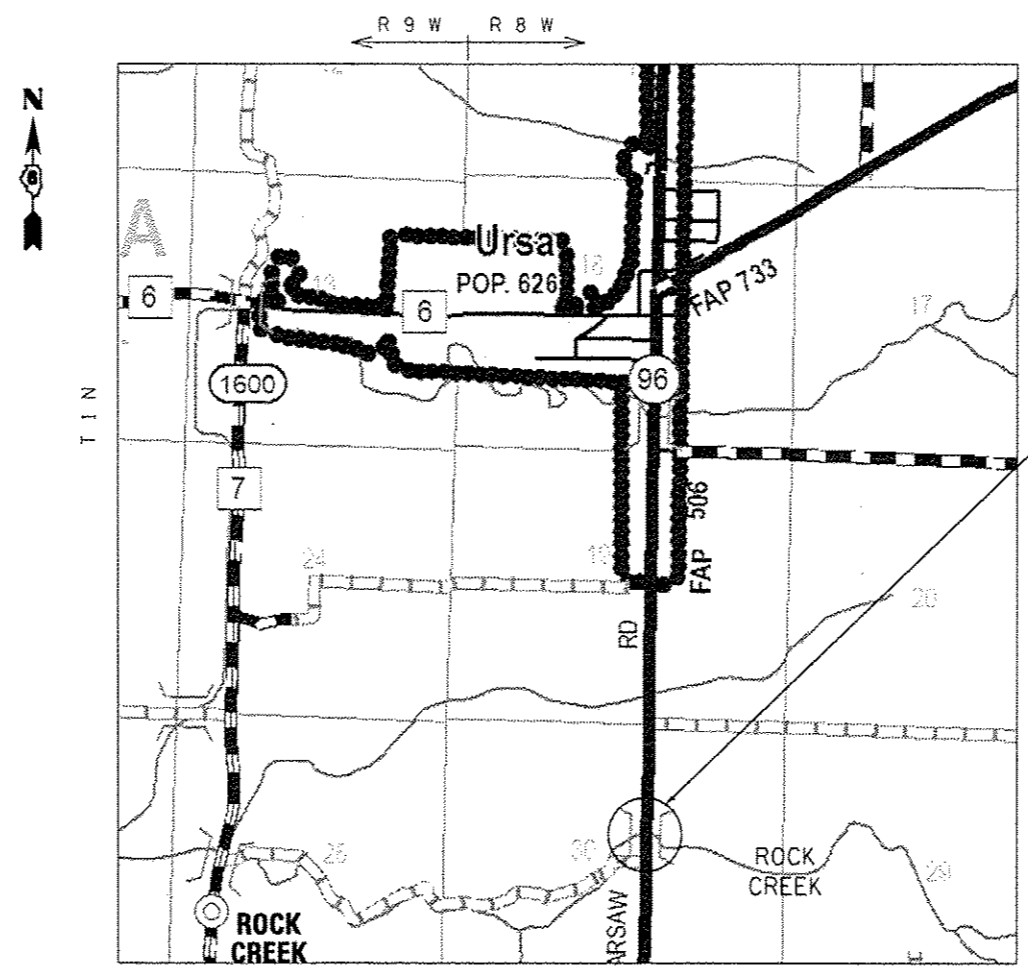
F.A.P. 506 (IL 96)  
 ADT (2013) : 4550  
 HCV = 5.93% SU = 2.64% MU = 3.30%  
 SPEED LIMIT: 55 MPH (POSTED)

PROJECT LOCATION:  
 SN 001-0008  
 STA. 141+19.55  
 BRIDGE OVER ROCK CREEK



FULL SIZE PLANS HAVE BEEN PREPARED USING STANDARD ENGINEERING SCALES. REDUCED SIZED PLANS WILL NOT CONFORM TO STANDARD SCALES. IN MAKING MEASUREMENTS ON REDUCED PLANS, THE ABOVE SCALES MAY BE USED.

J.U.L.I.E.  
 JOINT UTILITY LOCATION INFORMATION FOR EXCAVATION  
 1-800-892-0123  
 OR 811



LOCATION MAP

NET LENGTH = 107.50 FT = 0.020 MILE

BRIDGE MAINTENANCE ENGINEER (ACTING): BRANDON DUDLEY (217) 785-9290  
 BRIDGE INSPECTION ENGINEER: DAVE COPENBARGER (217) 785-5306

CONTRACT NO. 72H23

STATE OF ILLINOIS  
 DEPARTMENT OF TRANSPORTATION  
 DIVISION OF HIGHWAYS

SUBMITTED May 16 20 14  
*Regis Z. Drubka*  
 DEPUTY DIRECTOR OF HIGHWAYS, REGION ENGINEER

June 27 20 14  
*John D. Baranzelli, P.E.*  
 ENGINEER OF DESIGN AND ENVIRONMENT

June 27 20 14  
*Chris Osman, P.E.*  
 DIRECTOR OF HIGHWAYS, CHIEF ENGINEER

**PRINTED BY THE AUTHORITY  
 OF THE STATE OF ILLINOIS**

**INDEX OF SHEETS**

1. COVER SHEET
2. INDEX OF SHEETS, STANDARDS, GENERAL NOTES SIGNATURES
3. SUMMARY OF QUANTITY
4. STAGE I TRAFFIC CONTROL DETAIL
5. STAGE II TRAFFIC CONTROL DETAIL
6. BRIDGE PLAN, CROSS SECTION & ELEVATION
7. PATCHING PLAN
8. ROADWAY TYPICAL SECTION (FOR INFORMATION ONLY)

**STANDARDS**

- 701006-05 OFF ROAD OPERATIONS, 2L, 2W, 15' TO 24" FROM PAVEMENT EDGE
- 701011-04 OFF ROAD MOVING OPERATIONS, 2L, 2W, DAY ONLY
- 701301-04 LANE CLOSURE, 2L, 2W, SHORT TIME OPERATIONS
- 701316-08 LANE CLOSURE, 2L, 2W, BRIDGE REPAIR, FOR SPEEDS ≥ 45 MPH
- 701901-03 TRAFFIC CONTROL DEVICES
- 701001-02 OFF-RD OPERATIONS, 2L, 2W, MORE THAN 15' (4.5 m) AWAY

**GENERAL NOTES**

1. FULL DEPTH PATCHES SHOWN ON THE PLAN SHEETS IDENTIFY AREAS WHERE THE POTENTIAL FOR FULL DEPTH PATCHES IS GREATER. THE CONTRACTOR SHALL NOT INTENTIONALLY REMOVE SOUND CONCRETE IN ORDER TO MAKE PATCHES FULL DEPTH.
2. THE PATCH SIZES AND LOCATIONS SHOWN ON THE PLAN SHEETS ARE ESTIMATED. THE FINAL PATCH LOCATIONS SHALL BE DETERMINED BY THE ENGINEER IN THE FIELD.
4. FULL DEPTH PATCHES REMAINING OPEN OVERNIGHT SHALL BE COVERED WITH STEEL PLATES. THE COST OF FURNISHING, SETTING, AND REMOVING STEEL PLATES SHALL BE INCLUDED IN THE BID PRICE FOR 'DECK SLAB REPAIR (FULL DEPTH, TY II).'

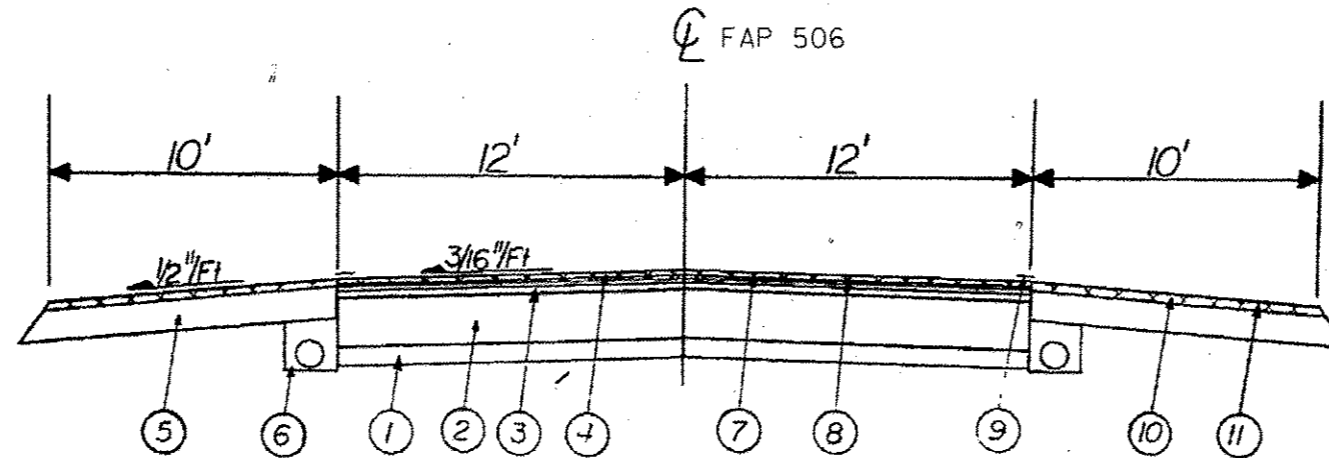
**SIGNATURES**

<b>STATE OF ILLINOIS DEPARTMENT OF TRANSPORTATION DIVISION OF HIGHWAYS DISTRICT 6</b>	
EXAMINED <u>May 16<sup>th</sup> 20 14</u>	
<u>John C. Weyangund</u> ENGINEER OF OPERATIONS	
EXAMINED <u>May 15 20 14</u>	
<u>Tommy F. L.</u> ENGINEER OF PROJECT IMPLEMENTATION	
EXAMINED <u>May 13 20 14</u>	
<u>Jeffrey P. Meyer</u> ENGINEER OF PROGRAM DEVELOPMENT	

FILE NAME * S:\Bridges\plans_CAD\72H23 - SN 0010008 P	USER NAME * shaham shaham 2014\plansheets.dgn	DESIGNED - DMS	REVISED -	<b>STATE OF ILLINOIS DEPARTMENT OF TRANSPORTATION</b>	<b>INDEX OF SHEETS, STANDARDS, SIGNATURES, GENERAL NOTES</b>	F.A.P RTE. 506	SECTION *	COUNTY ADAMS	TOTAL SHEETS 8	SHEET NO. 2	
Default	PLOT SCALE * 48.0000 / 1" =	DRAWN - DMS	REVISIED -					CONTRACT NO. 72H23			
	PLOT DATE * May-16-2014 11:55:24AM	CHECKED -	REVISIED -		SCALE:	SHEET	OF	SHEETS	STA.	TO	STA.

CODE NO.	ITEM	UNIT	TOTAL QUANTITY	CONSTR. CODE
				100% STATE ROADWAY 0014 S.N. 001-0008
67100100	MOBILIZATION	L SUM	1	1
70100100	TRAFFIC CONTROL AND PROTECTION, STANDARD 701316	EACH	1	1
70106500	TEMPORARY BRIDGE TRAFFIC SIGNALS	EACH	1	1
70106800	CHANGEABLE MESSAGE SIGN	CAL MO	4	4
Z0016002	DECK SLAB REPAIR (FULL DEPTH, TYPE II)	SQ YD	18	18
Z0016200	DECK SLAB REPAIR (PARTIAL)	SQ YD	123	123

FILE NAME * S:\Bridges\plans\CAD\72H23 - SN 0010008	USER NAME * shandm Plotting 2814\plansheets.dgn	DESIGNED - DMS DRAWN - DMS	REVISED - REVISED -	<b>STATE OF ILLINOIS DEPARTMENT OF TRANSPORTATION</b>	<b>SUMMARY OF QUANTITY</b>	F.A.P. RTE. 506	SECTION •	COUNTY ADAMS	TOTAL SHEETS 8	SHEET NO. 3	
PLOT SCALE * 40.0000' / in.	CHECKED -	REVISED -	SCALE:			SHEET OF SHEETS	STA. TO STA.	CONTRACT NO. 72H23			
PLOT DATE * May-16-2014 11:56:24AM	DATE -	REVISED -	ILLINOIS FED. AID PROJECT								



STATION TO STATION  
 STA. 109+14.50 TO STA. 140+21.25  
 STA. 141+97.85 TO STA. 178+50.00

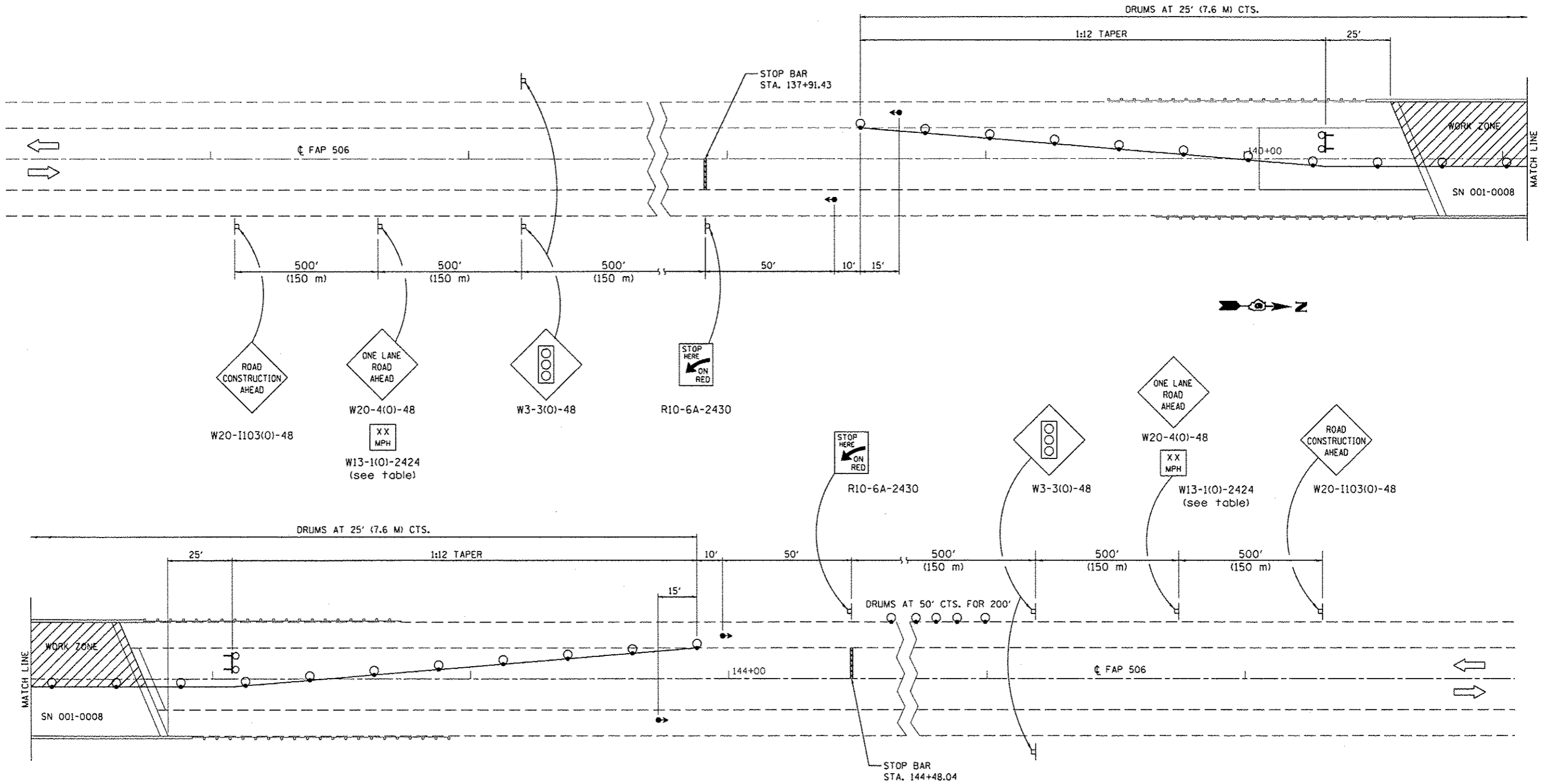
BRIDGE OMISSION  
 STA. 140+66.80 TO STA. 141+73.30

**LEGEND**

- ① EXISTING SUB BASE GRAN. MATERIAL - 4"
- ② EXISTING STABILIZED BASE COURSE - 10"
- ③ EXISTING BIT. CONC. BINDER CSE, 2 AT 1 1/2"
- ④ EXISTING BIT. CONC. SURF. CSE, CLASS I-1"
- ⑤ EXISTING STABILIZED SHOULDER - 8"
- ⑥ EXISTING PIPE UNDERDRAINS
- ⑦ EXISTING BIT. SURFACE REMOVAL (COLD MILLING), VAR. DEP.
- ⑧ EXISTING BIT. CONC. SURFACE CSE MIXTURE D, CLASS I, TYPE 2, 1 1/2"
- ⑨ EXISTING PAINT PAVEMENT MARKING - LINE 5"
- ⑩ EXISTING BIT. SHOULDER REMOVAL - 1 1/2"
- ⑪ EXISTING BIT. SHOULDER - 1 1/2"

NOTE: NOT DRAWN TO SCALE, INFORMATION AND TYPICAL SECTION FROM ARCHIVED PLANS

FILE NAME *	USER NAME * shohdm	DESIGNED - DMS	REVISED -	<b>STATE OF ILLINOIS DEPARTMENT OF TRANSPORTATION</b>	<b>ROADWAY TYPICAL SECTION (FOR INFORMATION ONLY)</b>				F.A.P. RTEL.	SECTION	COUNTY	TOTAL SHEETS	SHEET NO.
S:\B-ldg\plans_CAD\72H23 - SN 2212228	Plotting 2214\plansheets.dgn	DRAWN - DMS	REVISED -		506	*	ADAMS	8	4				
Default	PLOT SCALE * 40.2228 1/ in.	CHECKED -	REVISED -		SCALE: SHEET OF SHEETS STA. TO STA.				CONTRACT NO. 72H23				
	PLOT DATE * May-16-2014 11:57:23AM	DATE -	REVISED -		ILLINOIS FED. AID PROJECT								



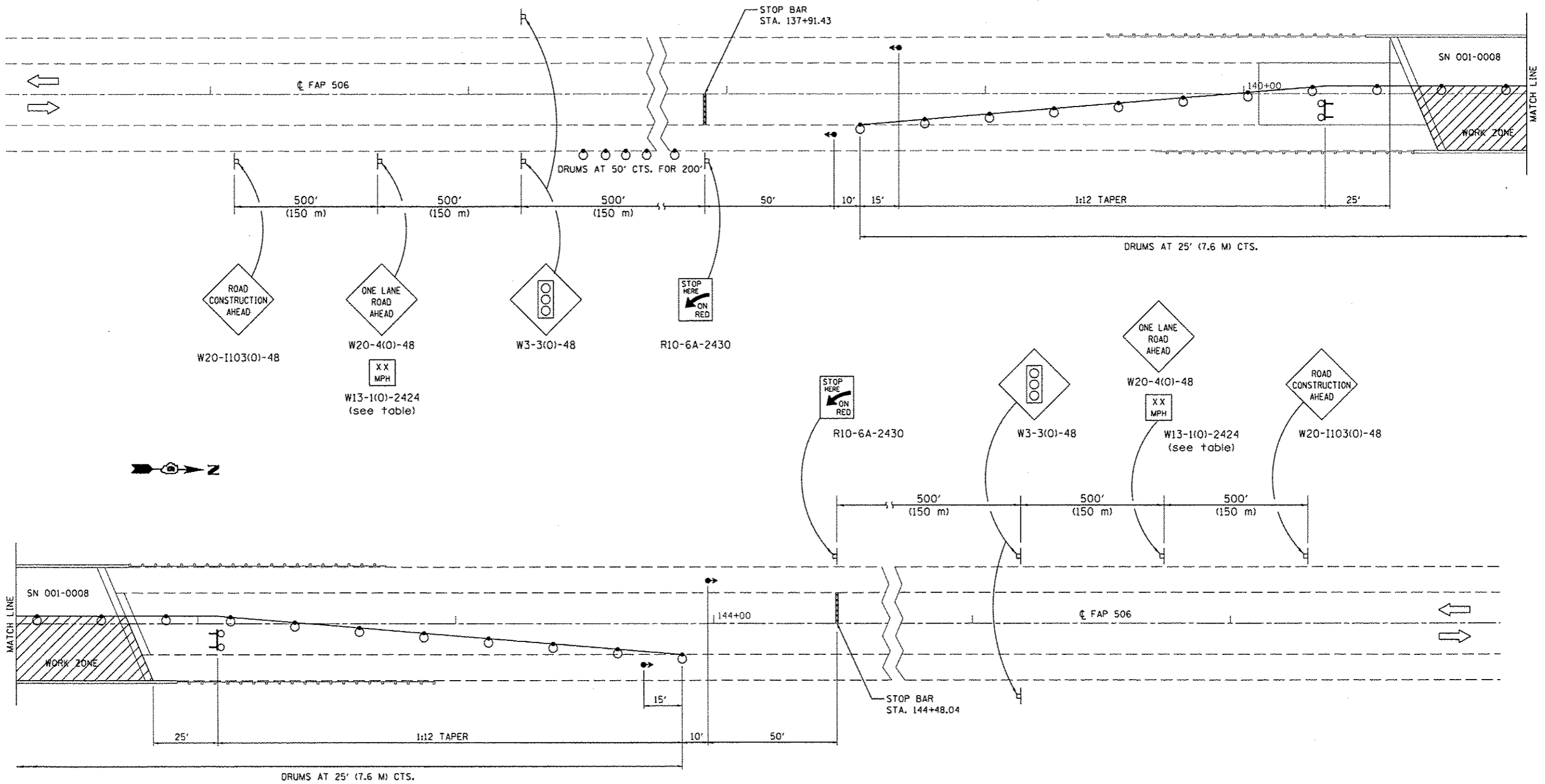
**SYMBOLS**

- WORK AREA
- SIGN
- TRAFFIC SIGNAL
- DRUM WITH STEADY BURNING LIGHT
- TYPE III BARRICADE WITH FLASHING LIGHTS

**NOTE:**

1. UTILIZE TRAFFIC CONTROL AND PROTECTION, STANDARD 701316 FOR ADDITIONAL INFORMATION.
2. MAX WIDTH SIGN (W12-1102(O)-48) WILL NOT BE REQUIRED FOR TRAFFIC CONTROL AND PROTECTION STANDARD 701316.
3. FULL DEPTH PATCHES REMAINING OPEN OVERNIGHT SHALL BE COVERED WITH STEEL PLATES. THE COST OF FURNISHING, SETTING, AND REMOVING STEEL PLATES SHALL BE INCLUDED IN THE BID PRICE FOR "DECK SLAB REPAIR (FULL DEPTH, TY II)."
4. LANE CLOSURE EDGE LINES SHOWN ON THIS DETAIL ARE FOR CLARITY ONLY. NO TEMPORARY STRIPING WILL BE REQUIRED FOR STRUCTURE 001-0008.

FILE NAME * SNBridgeplans_CAD72423 - SN 0010008	USER NAME * shahdm	DESIGNED - DMS	REVISED -	<b>STATE OF ILLINOIS DEPARTMENT OF TRANSPORTATION</b>	<b>SN 001-0008 STAGE I TRAFFIC CONTROL DETAIL</b>			F.A.P. RTE. 506	SECTION .	COUNTY ADAMS	TOTAL SHEETS 8	SHEET NO. 5
Default	Plotting 2014\plansheets.dgn	DRAWN - DMS	REVISED -		SCALE:	SHEET	OF	SHEETS	STA.	TO	CONTRACT NO. 72H23	
	PLOT SCALE * 48.0000 1/ in.	CHECKED -	REVISED -									
	PLOT DATE * May-16-2014 11:58:19AM	DATE -	REVISED -								ILLINOIS FED. AID PROJECT	



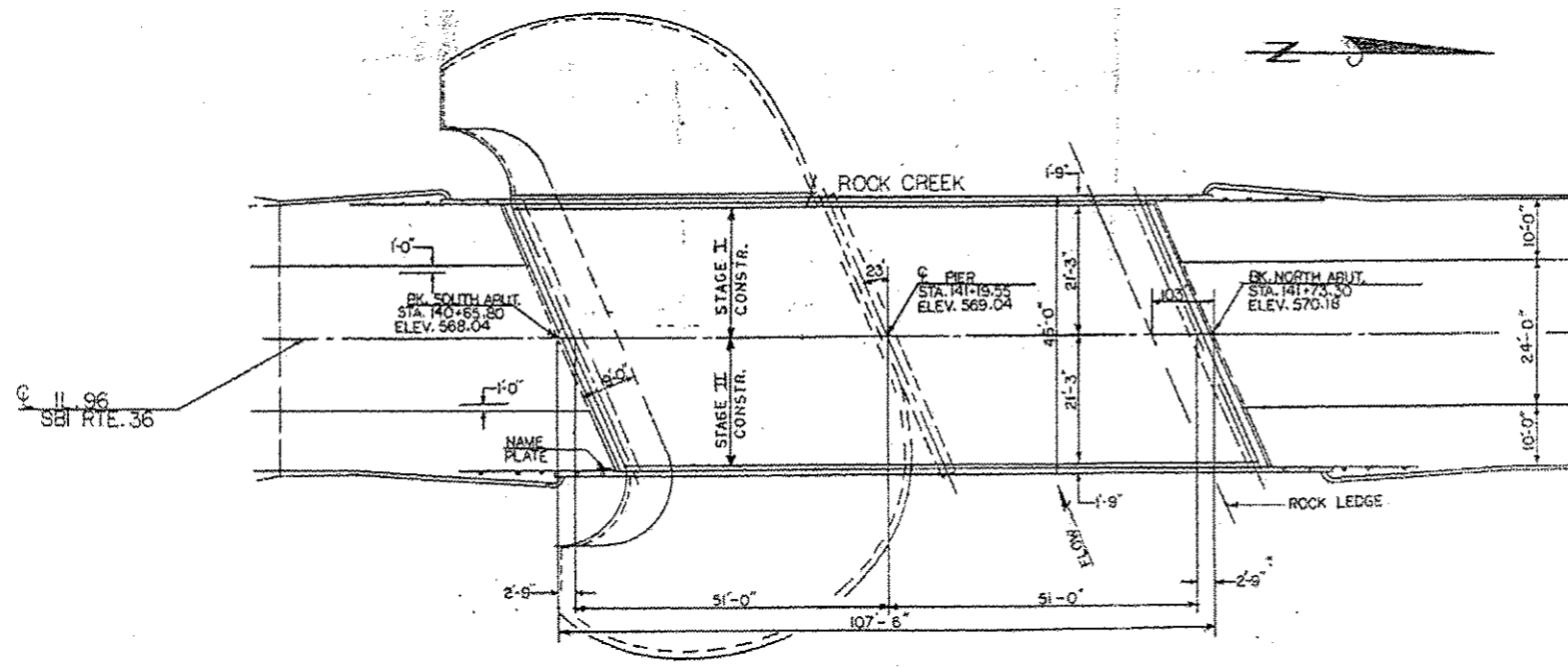
**SYMBOLS**

- WORK AREA
- SIGN
- TRAFFIC SIGNAL
- DRUM WITH STEADY BURNING LIGHT
- TYPE III BARRICADE WITH FLASHING LIGHTS

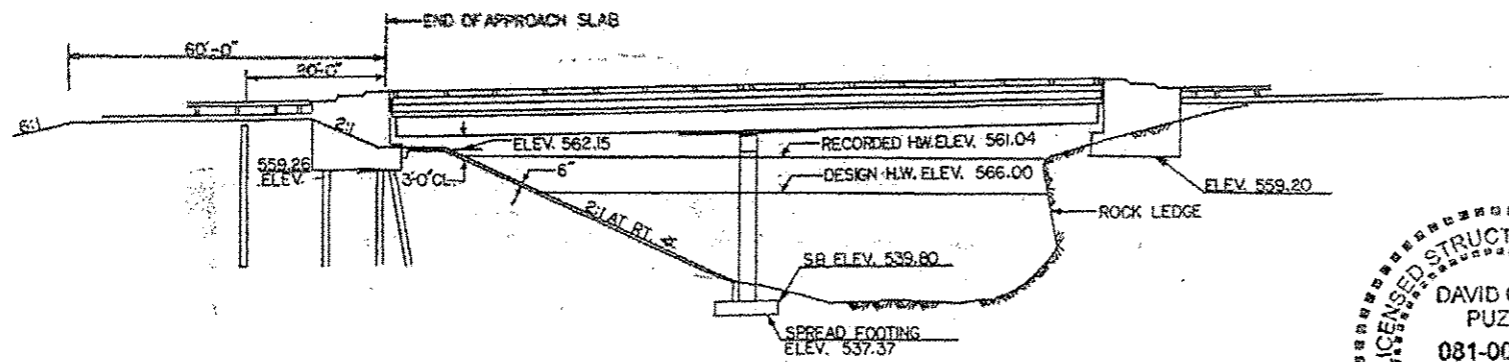
**NOTE:**

1. UTILIZE TRAFFIC CONTROL AND PROTECTION, STANDARD 701316 FOR ADDITIONAL INFORMATION.
2. MAX WIDTH SIGN (W12-1102(O)-48) WILL NOT BE REQUIRED FOR TRAFFIC CONTROL AND PROTECTION STANDARD 701316.
3. FULL DEPTH PATCHES REMAINING OPEN OVERNIGHT SHALL BE COVERED WITH STEEL PLATES. THE COST OF FURNISHING, SETTING, AND REMOVING STEEL PLATES SHALL BE INCLUDED IN THE BID PRICE FOR "DECK SLAB REPAIR (FULL DEPTH, TY II)."
4. LANE CLOSURE EDGE LINES SHOWN ON THIS DETAIL ARE FOR CLARITY ONLY. NO TEMPORARY STRIPING WILL BE REQUIRED FOR STRUCTURE 001-0008.

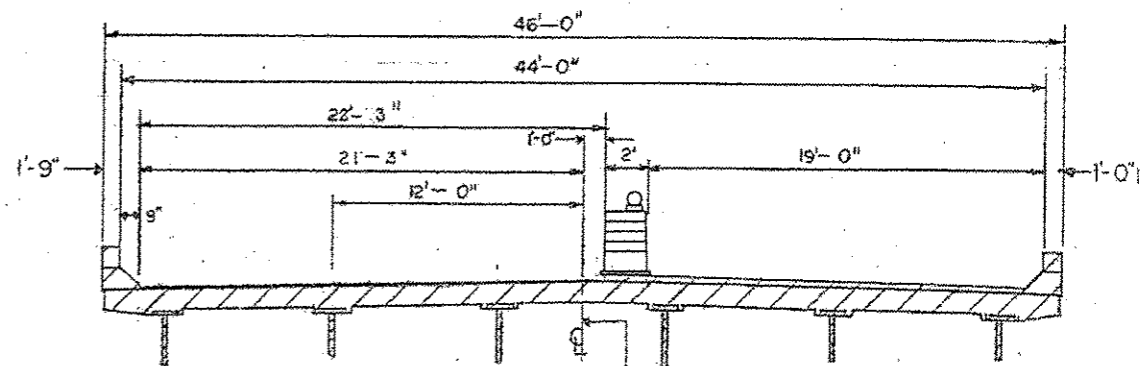
FILE NAME *	USER NAME * shahdm	DESIGNED - DMS	REVISED -	<b>STATE OF ILLINOIS DEPARTMENT OF TRANSPORTATION</b>	<b>SN 001-0008 STAGE II TRAFFIC CONTROL DETAIL</b>		F.A.P. RTE. 506	SECTION *	COUNTY ADAMS	TOTAL SHEETS 8	SHEET NO. 6	
SnBridgplans_CAD\72H23 - SN 20120208	Patching 2014\plansheets.dgn	DRAWN - DMS	REVISED -		SCALE:	SHEET	OF	SHEETS	STA.	TO	STA.	CONTRACT NO. 72H23
Default	PLOT SCALE = 48.0000 1/ in.	CHECKED -	REVISED -									ILLINOIS REG. AID PROJECT
	PLOT DATE = May-15-2014 11:58:23AM	DATE -	REVISED -									06 SPRING RD REPAIR 2014-22



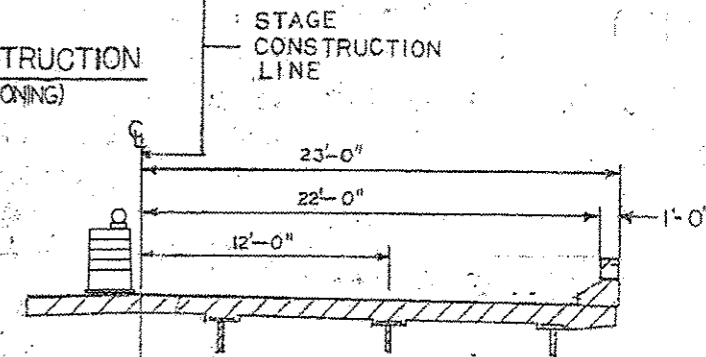
PLAN VIEW



ELEVATION



STAGE I CONSTRUCTION  
(LOOKING UP STATIONING)



STAGE II CONSTRUCTION



*David Carl Puzey* 6/19/14  
Expires 11/30/14

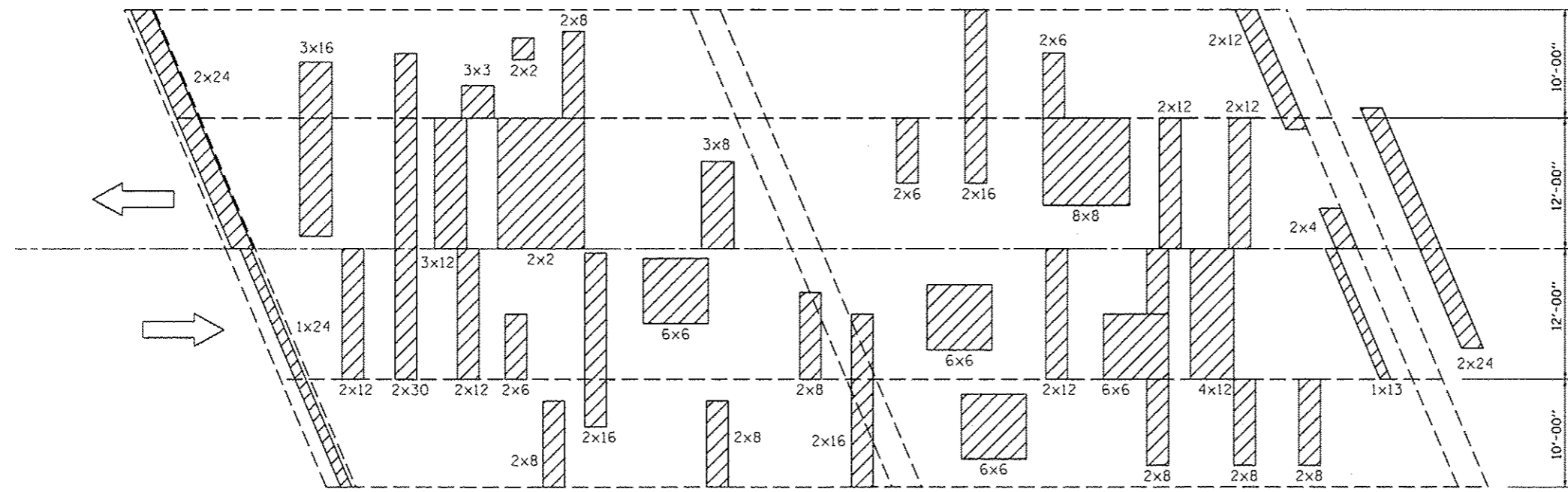
NOTE: NOT DRAWN TO SCALE

FILE NAME *	USER NAME * shahdm	DESIGNED - DMS	REVISED -	<b>STATE OF ILLINOIS DEPARTMENT OF TRANSPORTATION</b>	<b>SN 001-0008 BRIDGE PLAN, CROSS SECTION &amp; ELEVATION</b>		F.A.P. RTE.	SECTION	COUNTY	TOTAL SHEETS	SHEET NO.
518-ridgeplans.CAD\72H23 - SN 0010008	shahdm 2014\plansheets.dgn	DRAWN - DMS	REVISED -		506	*	ADAMS	8	7		
Default	PLOT SCALE * 40.0000 1/2 in.	CHECKED - <b>VHW</b>	REVISED -		SCALE: SHEET OF SHEETS STA. TO STA.		CONTRACT NO. 72H23				
	PLOT DATE * May-16-2014 11:59:31AM	DATE -	REVISED -		ILLINOIS FED. AID PROJECT						

BK. S. ABUT.  
STA. 140+65.80  
ELEV. 568.04

PIER  
STA. 141+19.55  
ELEV. 569.04

BK. N. ABUT.  
STA. 141+73.30  
ELEV. 570.18



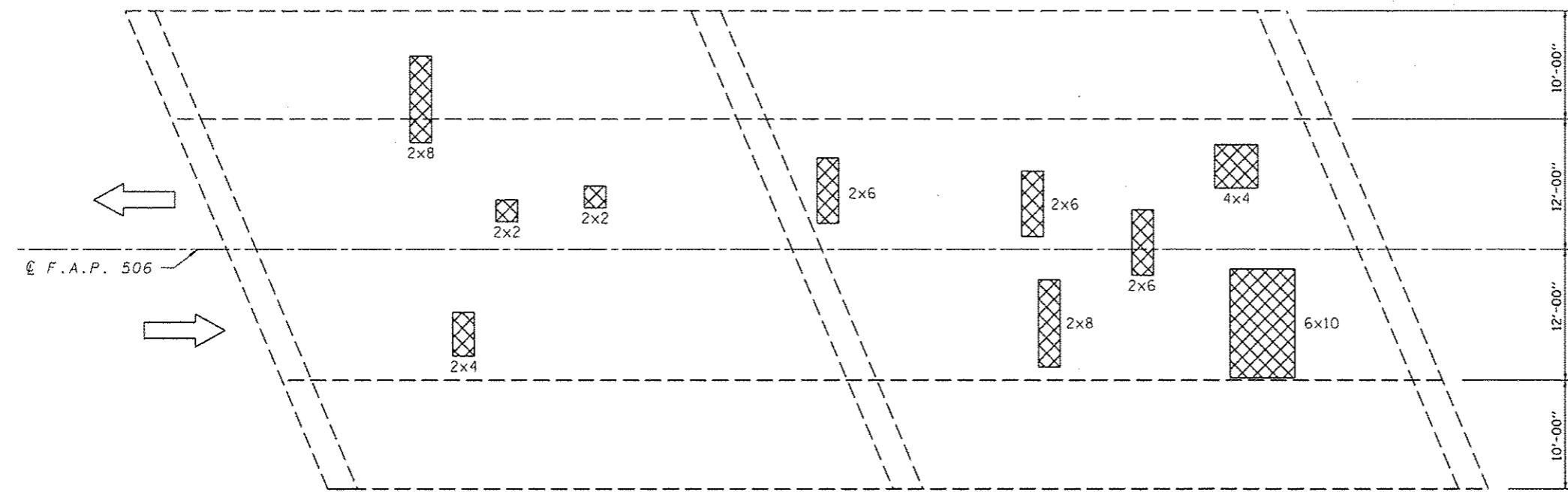
**PARTIAL DEPTH PATCHING PLAN**

BILL OF MATERIAL		
TYPE	UNIT	QUANTITY
DECK SLAB REPAIR (PARTIAL)	SQ. YD.	123
DECK SLAB REPAIR (FULL DEPTH, TYPE II)	SQ. YD.	18

BK. S. ABUT.  
STA. 140+65.80  
ELEV. 568.04

PIER  
STA. 141+19.55  
ELEV. 569.04

BK. N. ABUT.  
STA. 141+73.30  
ELEV. 570.18



**FULL DEPTH PATCHING PLAN**

PATCHING SURVEY: 3-1-2014

**GENERAL NOTES:**

1. THE PATCH SIZES AND LOCATIONS SHOWN ON THE PLAN SHEETS ARE ESTIMATED. THE FINAL PATCH LOCATIONS SHALL BE DETERMINED BY THE ENGINEER IN THE FIELD.
2. PATCHING AREAS SHOWN ON THE APPROACHES SHALL BE GOVERNED BY THE DECK SLAB REPAIR SPECIAL PROVISION AND SHALL BE PAID FOR AS 'DECK SLAB REPAIR' OF THE APPROPRIATE TYPE.
3. FULL DEPTH PATCHES REMAINING OPEN OVERNIGHT SHALL BE COVERED WITH STEEL PLATES. THE COST OF FURNISHING, SETTING, AND REMOVING STEEL PLATES SHALL BE INCLUDED IN THE BID PRICE FOR 'DECK SLAB REPAIR (FULL DEPTH, TY II).'