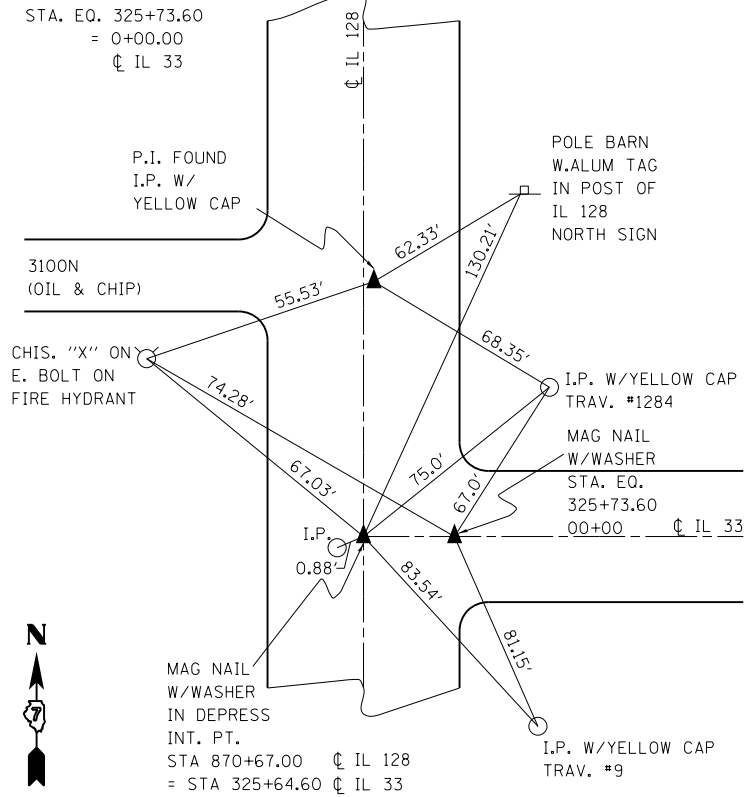


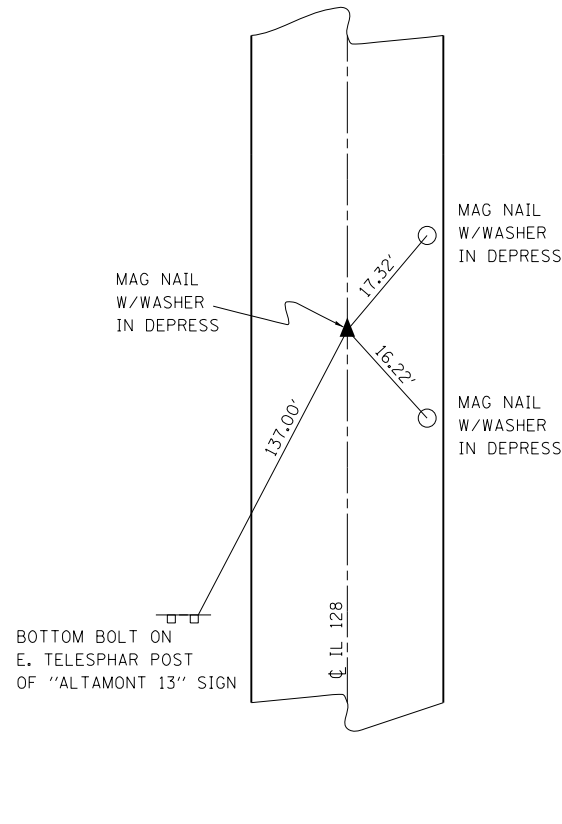
9

P.I. - CL 128
869+95.06



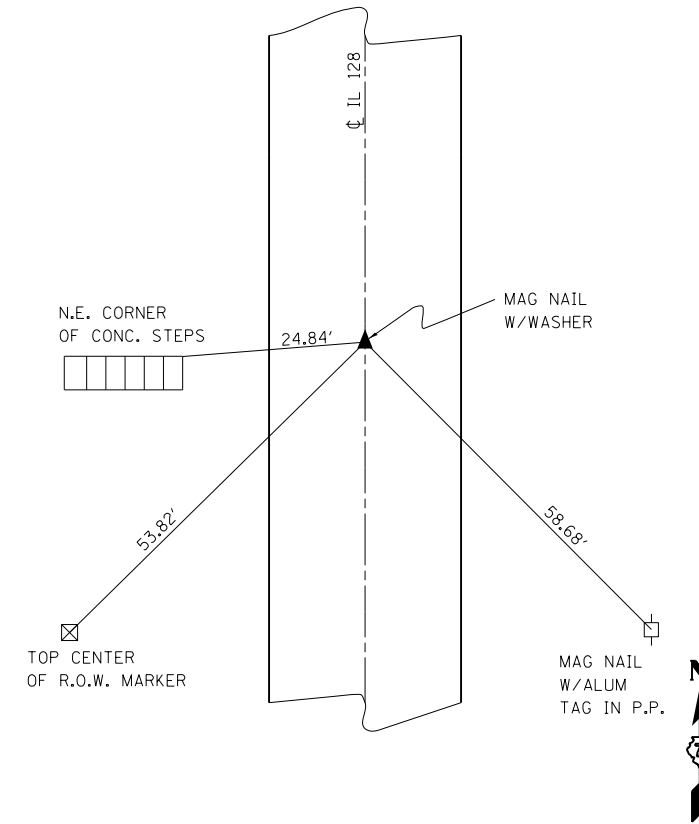
10

P.O.T.
STA 885+00.00



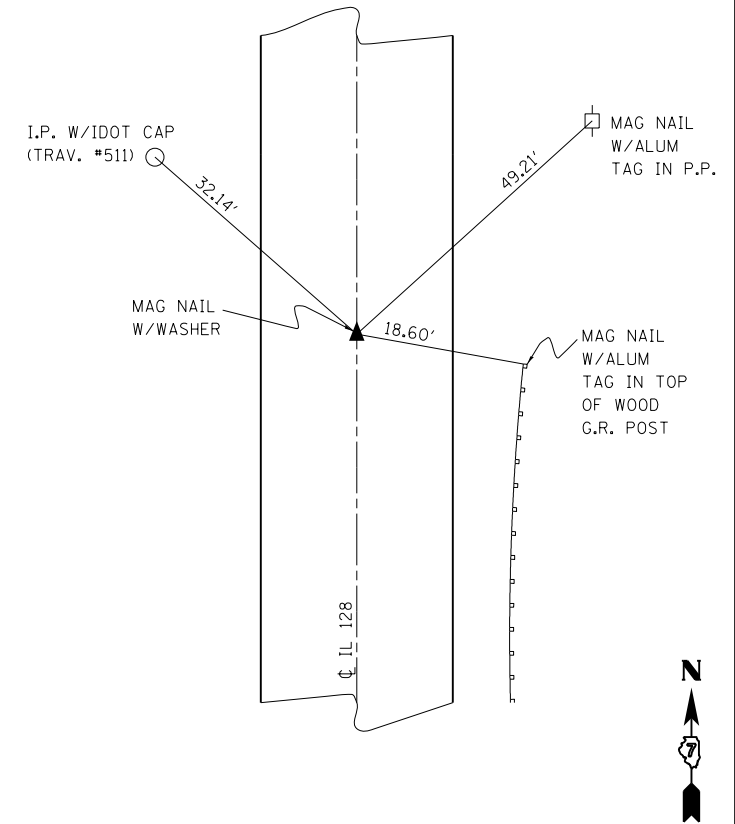
11

P.O.T.
STA 950+00.00



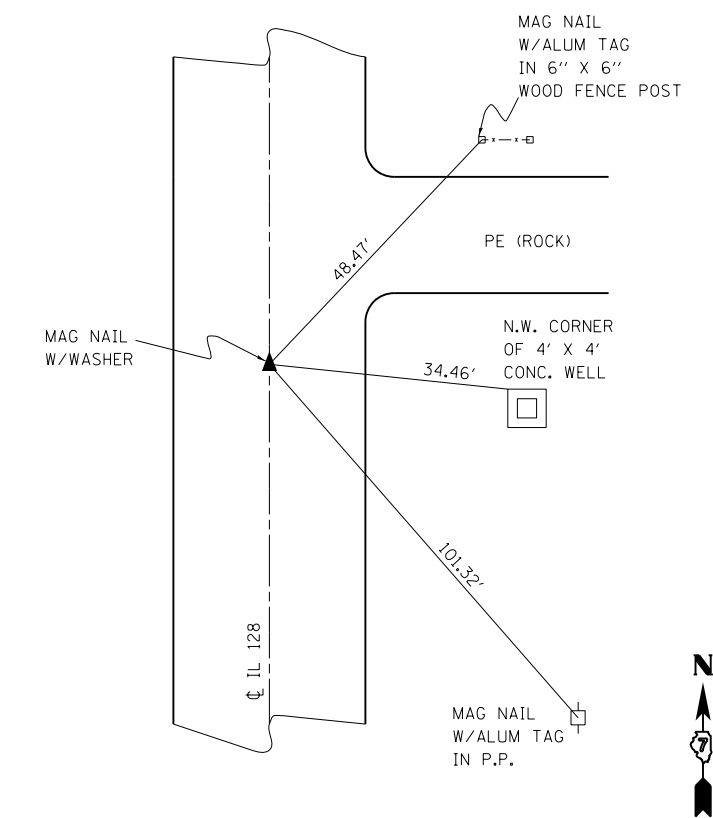
12

P.I. (kink)
STA 972+80.24



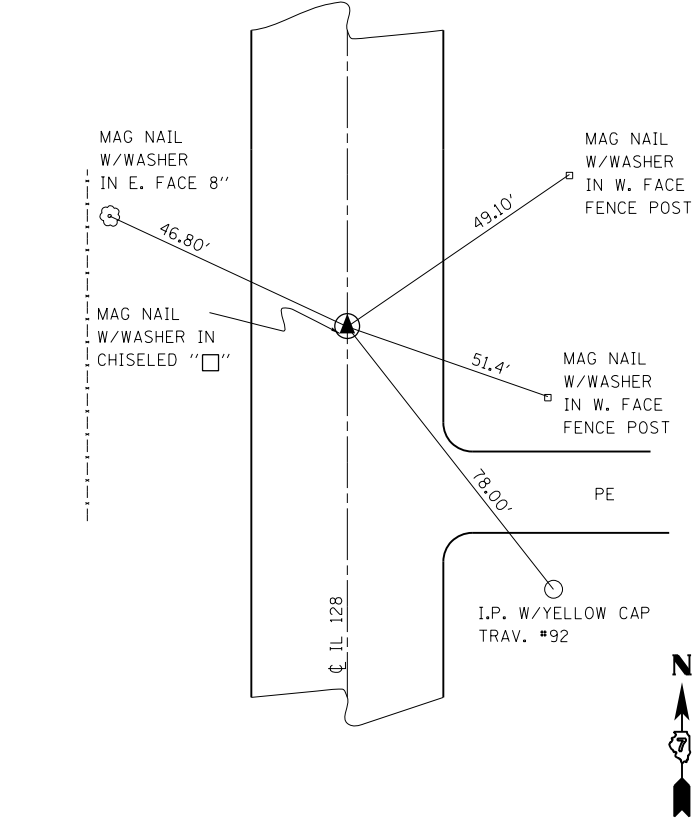
13

P.O.T.
STA 990+00.00



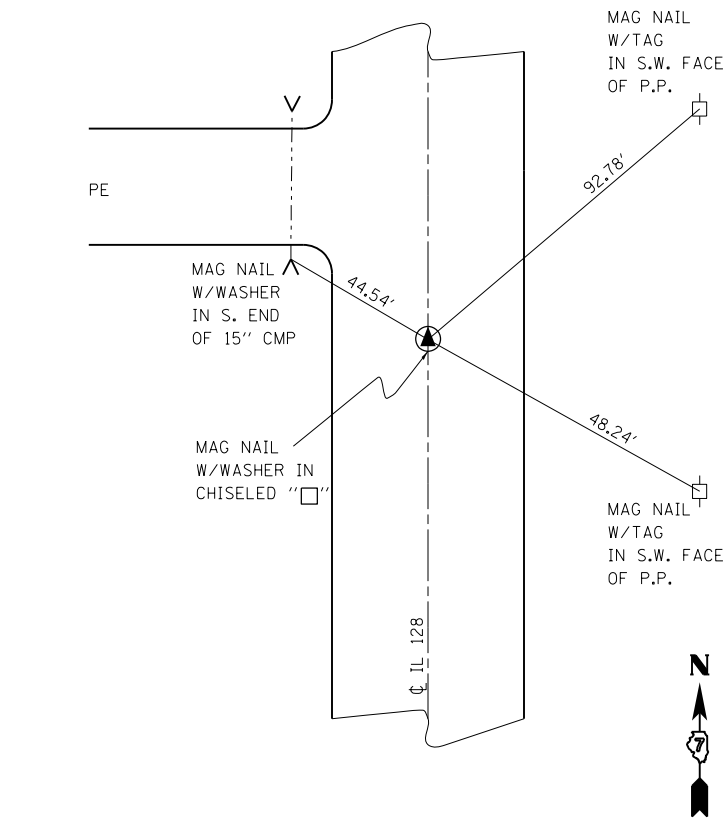
14

P.O.T.
STA 1030+00



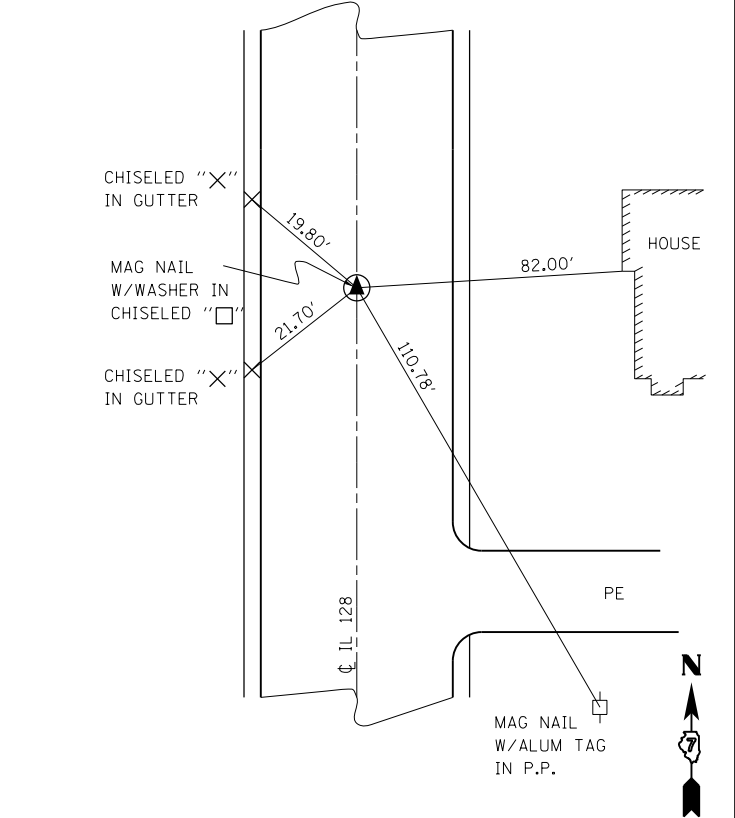
15

P.O.T.
STA 1052+00



16

P.I.
STA 1074+29.82



FILE NAME =	USER NAME = steffernk	DESIGNED -	REVISED -
c:\pw\work\p\dot\stef\ernk\d0121426\074052-sh-t-ties.dgn		DRAWN -	REVISED -
PLOT SCALE = 100.0000' / 1"		CHECKED -	REVISED -
PLOT DATE = 6/6/2014		DATE -	REVISED -

STATE OF ILLINOIS
DEPARTMENT OF TRANSPORTATION

SURVEY TIES

SCALE: N/A SHEET NO. 2 OF 8 SHEETS STA. TO STA.

F.A.S. RTE.	SECTION	COUNTY	TOTAL SHEETS	SHEET NO.
2801	102RS-3.103RS-2.102N		84	17
• Effingham, Fayette		CONTRACT NO. 74052		
ILLINOIS FED. AID PROJECT				