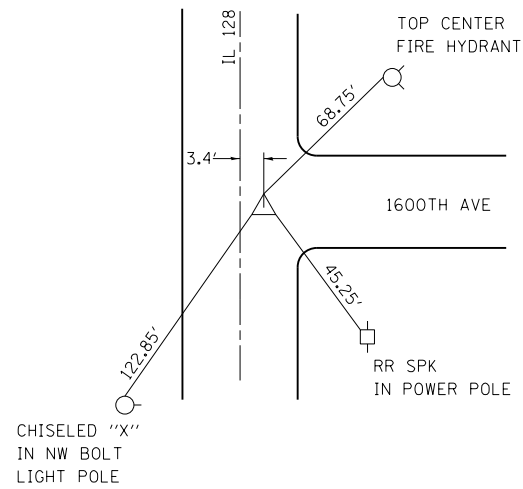


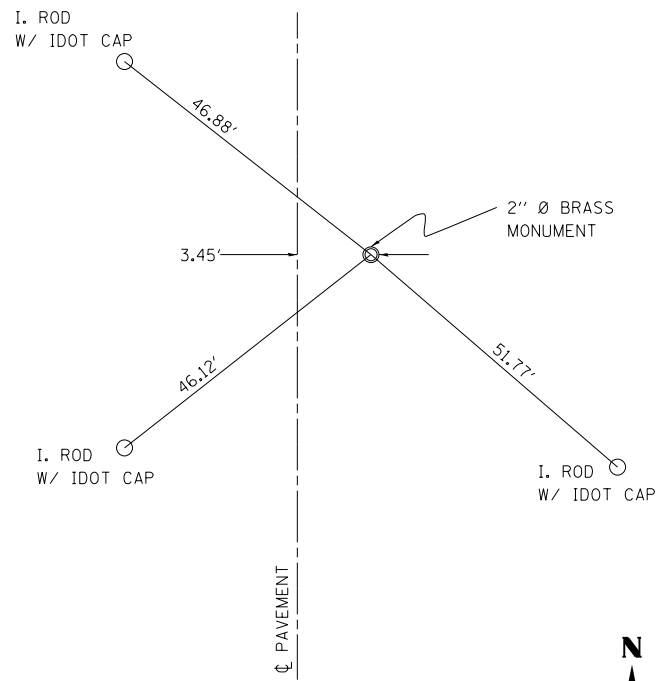
42

SOUTHWEST CORNER SEC. 7 T8N R4E
EXISTING BRASS STEM
± STA 1023+07



43

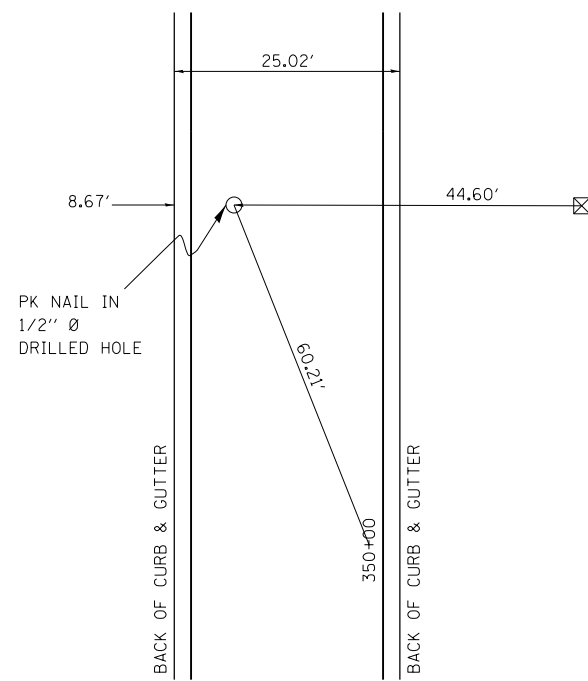
NW CORNER OF SEC 18
± STA 1023+07



NOTE: SAME POINT AS 42 - DIFFERENT TIES.

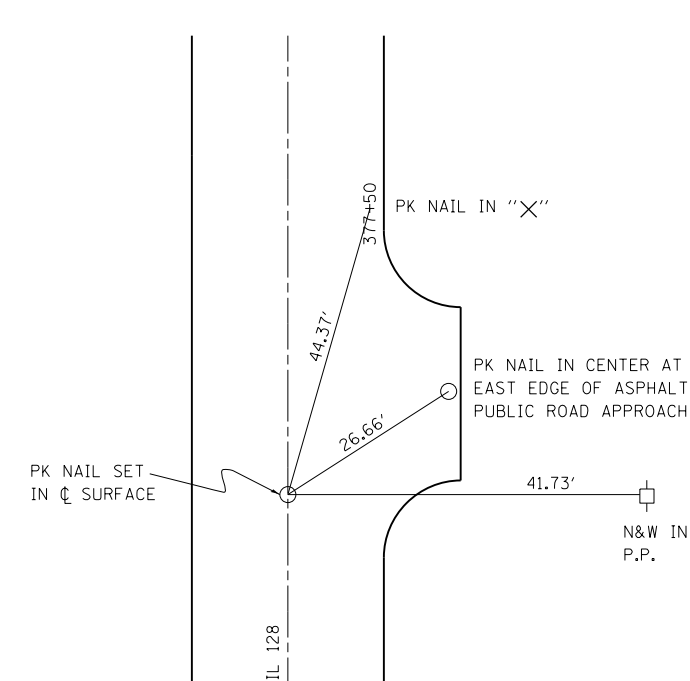
44

SW CORNER OF SEC 18
± STA 1076+25



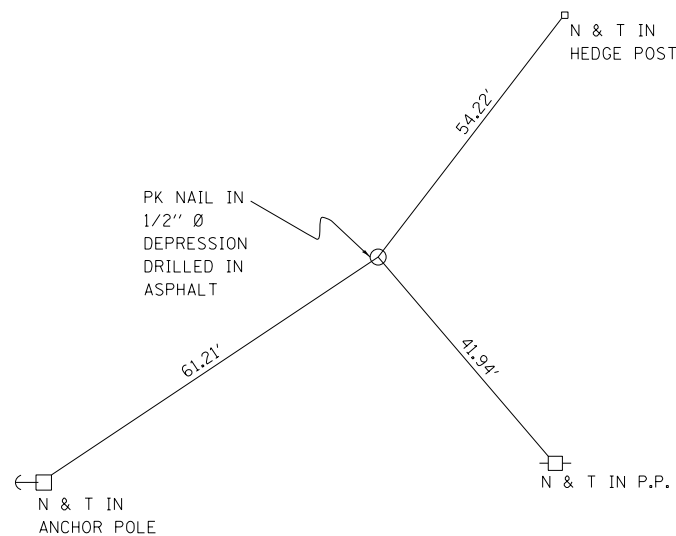
45

WEST 1/4 - CORNER OF SEC 18
± STA 1049+57



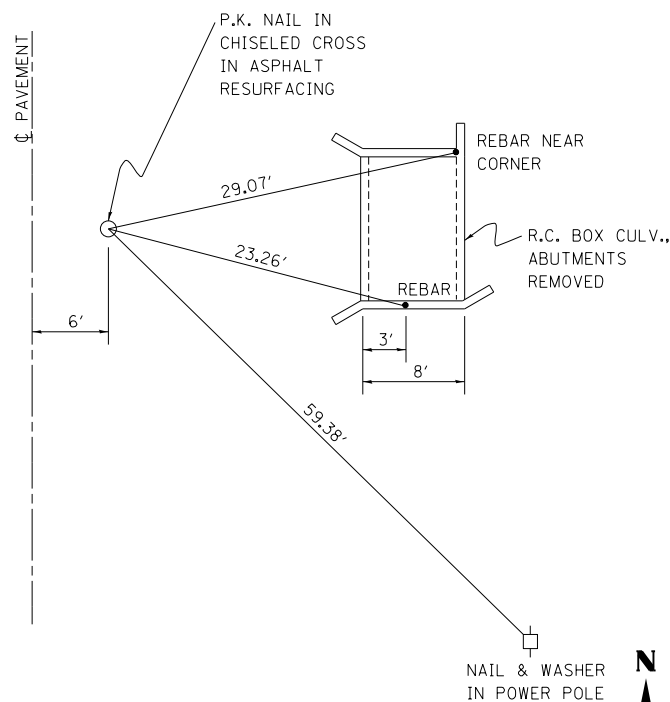
46

SW CORNER SEC. 6 T7N R4E
± STA 1284+74



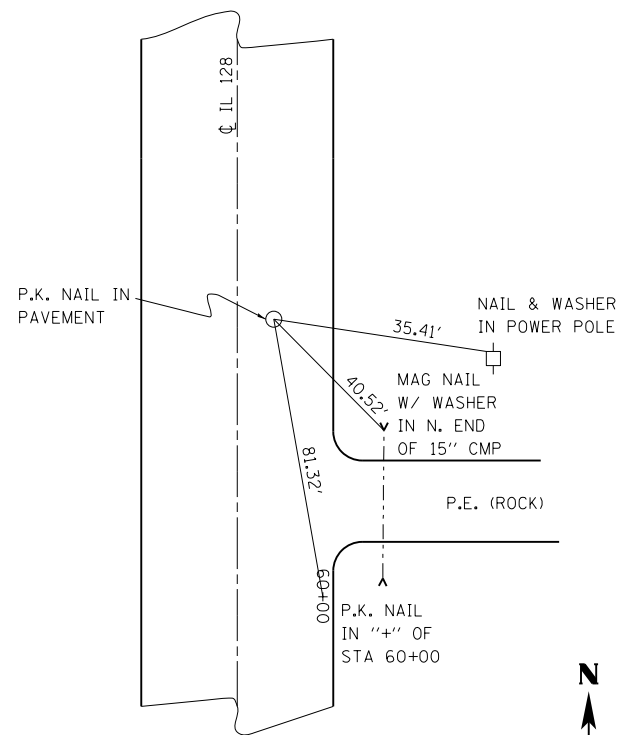
47

NW CORNER SEC 18
± STA 1338+47



48

W 1/4 CORNER SEC. 18 T7N R4E
± STA 1365+98



FILE NAME =	USER NAME = steffenmk	DESIGNED -	REVISED -
c:\pw\work\p\dot\steffenmk\d0121426\07	4052-sh-ties.dgn	DRAWN -	REVISED -
	PLOT SCALE = 100.0000' / in.	CHECKED -	REVISED -
	PLOT DATE = 6/6/2014	DATE -	REVISED -

STATE OF ILLINOIS
DEPARTMENT OF TRANSPORTATION

SURVEY TIES

SCALE: N/A SHEET NO. 7 OF 8 SHEETS STA. TO STA.

F.A.S. RTE.	SECTION	COUNTY	TOTAL SHEETS	SHEET NO.
2801	102RS-3.103RS-2.102N		84	22
Effingham, Fayette			CONTRACT NO. 74052	

ILLINOIS FED. AID PROJECT