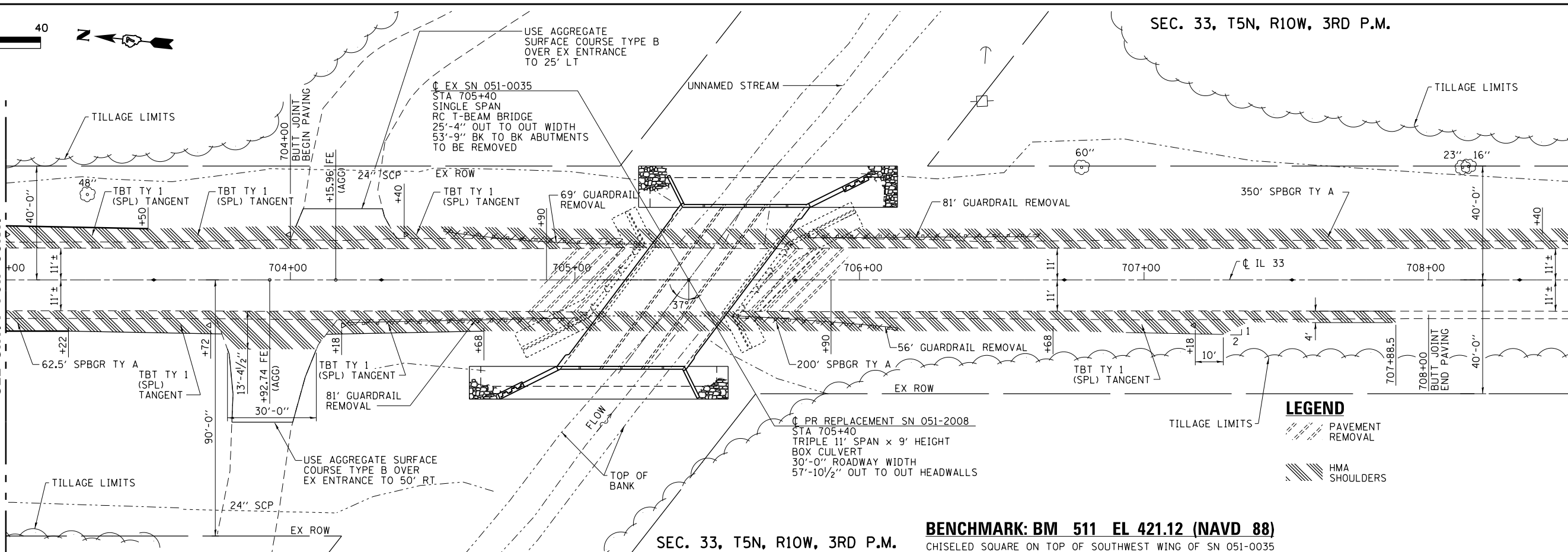


SEC. 33, T5N, R10W, 3RD P.M.

MATCH LINE STA. 703+00
SEE SHT. 7 FOR CONT.

MATCH LINE STA. 708+50
SEE SHT. 9 FOR CONT.



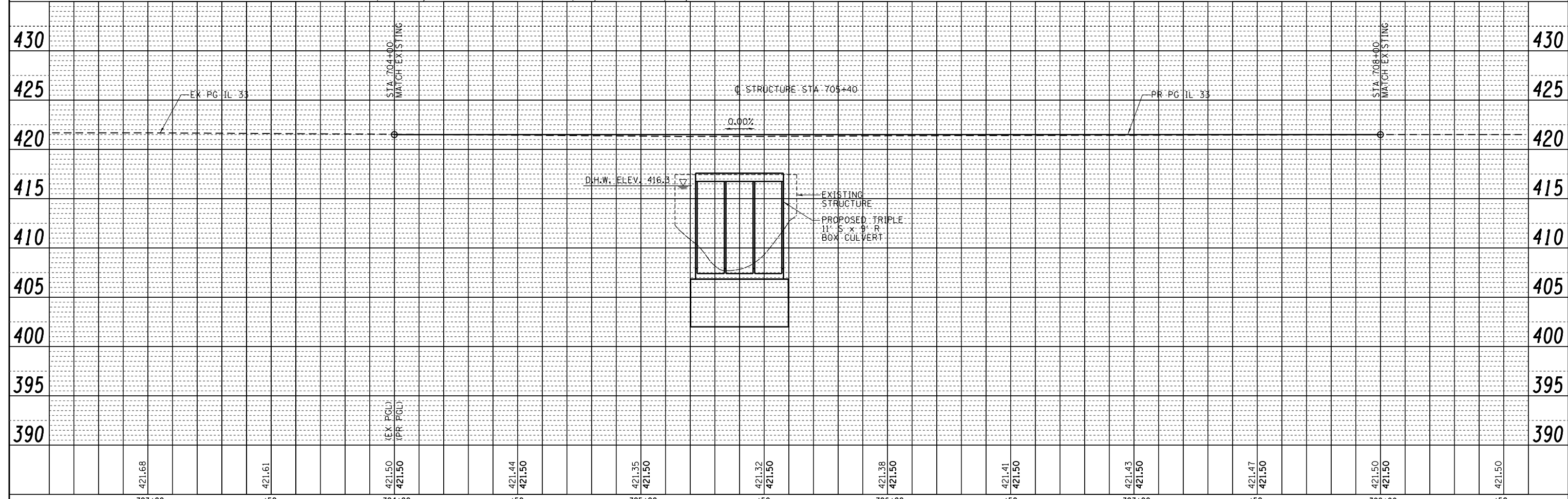
LEGEND

- PAVEMENT REMOVAL
- HMA SHOULDERS

SEC. 33, T5N, R10W, 3RD P.M. **BENCHMARK: BM 511 EL 421.12 (NAVD 88)**
CHISELED SQUARE ON TOP OF SOUTHWEST WING OF SN 051-0035

PLAN	SURVEYED	BY	DATE
	PLOTTED		
	CHECKED		
	AT		
	FILE NAME		
	NO.		

PROFILE	SURVEYED	BY	DATE
	PLOTTED		
	CHECKED		
	AT		
	NOT AT THIS OFFICE		
	NO.		



FILE NAME = D774105-shr-plnprf02.dgn	USER NAME = steffernk	DESIGNED - DAJ	REVISED -	STATE OF ILLINOIS DEPARTMENT OF TRANSPORTATION	FAP RTE 781 (IL 33) PLAN AND PROFILE				F.A.P. RTE. 781	SECTION 109B-1	COUNTY LAWRENCE	TOTAL SHEETS 34	SHEET NO. 8
PLOT SCALE = 0.16667" / 1'	CHECKED - ELH	REVISOR -	REVISOR -		SCALE: 1"=20'-0"	SHEET NO. 2 OF 3 SHEETS	STA. 703+00	TO STA. 708+50	CONTRACT NO. 74105				
SCALE: (HORIZ) 1"=10' (VERT) 1"=5'	PLOT DATE = 6/2/2014	DATE - 05/10	REVISOR -		FED. ROAD DIST. NO. ILLINOIS FED. AID PROJECT								